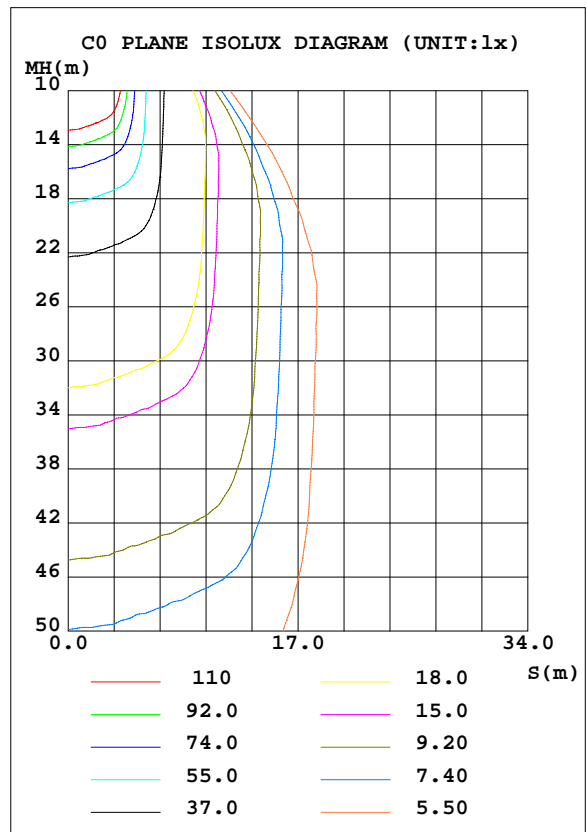
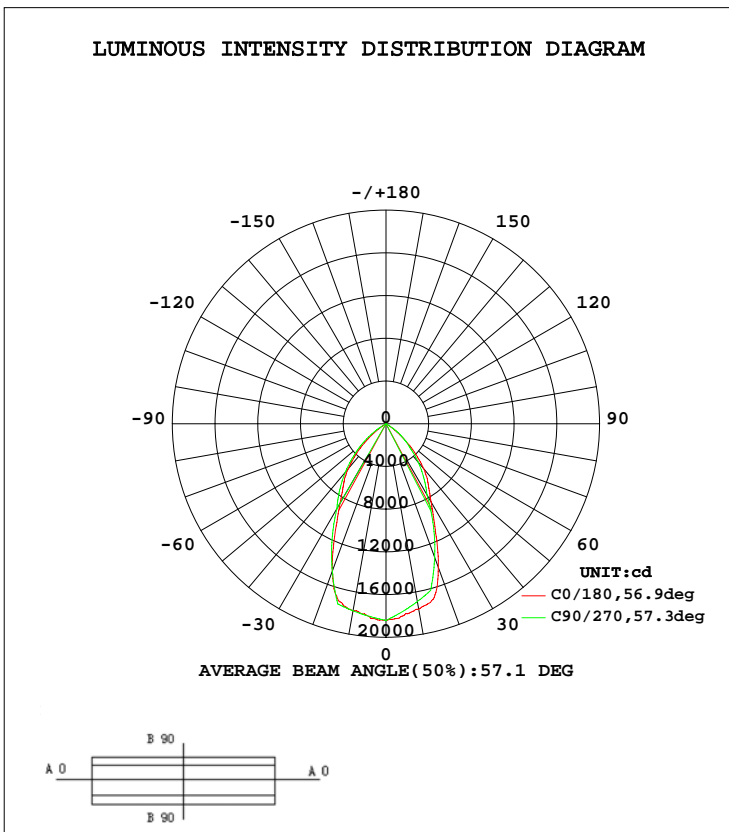


LUMINAIRE PHOTOMETRIC TEST REPORT

Test:U:220.4V I:0.9360A P:199.4W PF:0.9660 Lamp Flux:19531.4x1 lm		
NAME: LED HIGH BAY LIGHT	TYPE:	WEIGHT:2.5
SPEC.:PHILIPS 3030	DIM.:	SERIAL No.:
MFR.: QINHAN LIGHTING	SUR.:	PROTECTION ANGLE:

DATA OF LAMP		PHOTOMETRIC DATA Eff: 97.95 lm/W			
MODEL	QH-HBGKH-200W	I _{max} (cd)	18418	S/MH(C0/180)	0.89
NOMINAL POWER(W)	200	LOR(%)	100.0	S/MH(C90/270)	0.92
RATED VOLTAGE(V)	220	TOTAL FLUX(lm)	19531	η UP, DN(C0-180)	0.0, 47.2
NOMINAL FLUX(lm)	19531.4	CIE CLASS	DIRECT	η UP, DN(C180-360)	0.0, 52.8
LAMPS INSIDE	1	η up(%)	0.0	CIBSE SHR NOM	0.75
TEST VOLTAGE(V)	220.1	η down(%)	100.0	CIBSE SHR MAX	0.90



C Range: 0 - 360DEG
 C Interval: 5.0DEG
 Test Speed: HIGH
 Temperature:25.3DEG
 Operators:
 Test Date:2015-11-17

γ Range: 0 - 90DEG
 γ Interval: 0.5DEG
 Test System:EVERFINE GO-2000B_V1 SYSTEM V2.0.287
 Humidity:65.0%
 Test Distance:8.000m [K=1.0000]
 Remarks: 明纬电源
 反光罩: 60度 PC罩: 透明

ZONAL FLUX DIAGRAM

ZONAL FLUX DIAGRAM:

γ	C0	C45	C90	C135	C180	C225	C270	C315	γ	Φ zone	Φ total	lum, lamp
5	1806	1771	1766	1775	1813	1803	1810	1807	0- 5	432.8	432.8	2.22,2.22
10	1763	1664	1691	1689	1781	1753	1778	1755	5- 10	1256	1689	8.65,8.65
15	1703	1526	1616	1576	1715	1682	1747	1671	10- 15	2000	3690	18.9,18.9
20	1433	1317	1333	1389	1468	1526	1471	1507	15- 20	2529	6219	31.8,31.8
25	1093	1038	1050	1101	1128	1224	1196	1211	20- 25	2642	8861	45.4,45.4
30	845.4	816.9	767.4	858.5	861.0	941.0	920.0	936.1	25- 30	2487	11348	58.1,58.1
35	690.8	649.2	618.4	670.8	693.1	735.4	756.3	741.6	30- 35	2259	13607	69.7,69.7
40	547.2	499.2	469.5	506.5	552.3	579.4	592.5	581.4	35- 40	2031	15637	80.1,80.1
45	379.0	333.1	320.5	339.9	386.8	414.3	428.8	410.8	40- 45	1671	17308	88.6,88.6
50	213.1	177.4	214.8	186.2	222.5	252.6	288.3	250.1	45- 50	1192	18501	94.7,94.7
55	75.64	38.88	109.2	48.72	74.25	106.5	147.8	103.8	50- 55	694.6	19195	98.3,98.3
60	5.569	12.87	3.523	18.12	5.919	46.15	7.260	43.64	55- 60	263.9	19459	99.6,99.6
65	3.176	4.303	2.583	4.782	3.287	12.80	5.175	11.63	60- 65	46.94	19506	99.9,99.9
70	1.876	1.385	1.642	1.676	1.940	1.872	3.091	2.157	65- 70	13.30	19519	99.9,99.9
75	1.018	0.8578	0.7014	1.025	1.049	1.130	1.006	1.292	70- 75	7.558	19527	100,100
80	0.4844	0.3523	0	0.3990	0.4987	0.4355	0	0.4879	75- 80	3.476	19530	100,100
85	0.1453	0	0	0	0.1420	0	0	0	80- 85	0.8415	19531	100,100
90	0.0432	0	0	0	0.0695	0	0	0	85- 90	0.0980	19531	100,100
95									90- 95			
100									95-100			
105									100-105			
110									105-110			
115									110-115			
120									115-120			
125									120-125			
130									125-130			
135									130-135			
140									135-140			
145									140-145			
150									145-150			
155									150-155			
160									155-160			
165									160-165			
170									165-170			
175									170-175			
180									175-180			
DEG	LUMINOUS INTENSITY:×10cd								UNIT:lm			

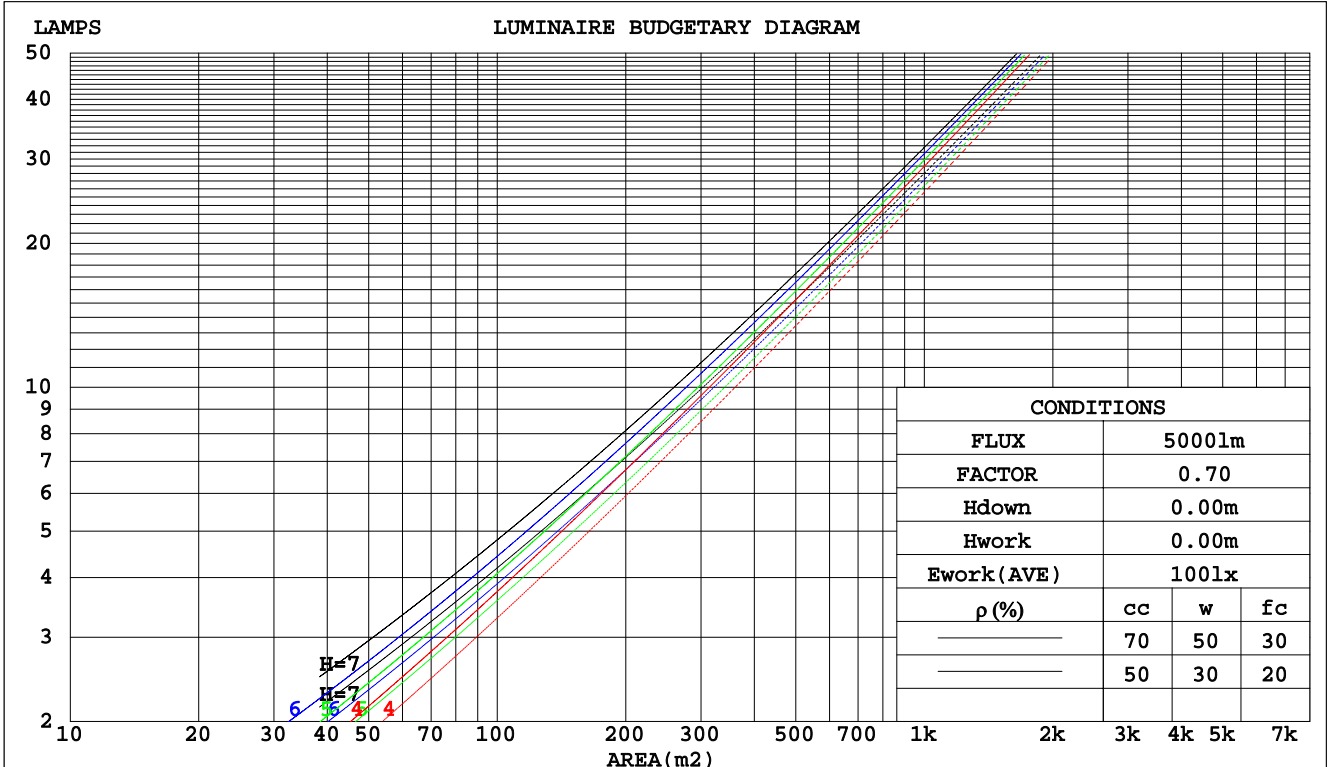
C Range: 0 - 360DEG
 C Interval: 5.0DEG
 Test Speed: HIGH
 Temperature:25.3DEG
 Operators:
 Test Date:2015-11-17

γ Range: 0 - 90DEG
 γ Interval: 0.5DEG
 Test System:EVERFINE GO-2000B_V1 SYSTEM V2.0.287
 Humidity:65.0%
 Test Distance:8.000m [K=1.0000]
 Remarks: 明纬电源
 反光罩: 60度 PC罩: 透明

CU AND LUMINAIRE BUDGETARY ESTIMATE DIAGRAM

Test:U:220.4V I:0.9360A P:199.4W PF:0.9660 Lamp Flux:19531.4x1 lm		
NAME: LED HIGH BAY LIGHT	TYPE:	WEIGHT:2.5
SPEC.:PHILIPS 3030	DIM.:	SERIAL No.:
MFR.: QINHAN LIGHTING	SUR.:	PROTECTION ANGLE:

pcc	80%			70%			50%			30%			10%			0
pw	50%	30%	10%	50%	30%	10%	50%	30%	10%	50%	30%	10%	50%	30%	10%	0
pfc	20%			20%			20%			20%			20%			0
RCR	RCR:Room Cavity Ratio															
	Coefficients of Utilization(CU)															
0.0	1.19	1.19	1.19	1.16	1.16	1.16	1.11	1.11	1.11	1.06	1.06	1.06	1.02	1.02	1.02	1.00
1.0	1.10	1.07	1.05	1.08	1.05	1.03	1.04	1.02	.00	.00	.98	.97	.97	.95	.94	.92
2.0	1.01	.97	.93	.00	.95	.92	.96	.93	.90	.93	.91	.88	.90	.88	.86	.85
3.0	.93	.88	.84	.92	.87	.83	.89	.85	.81	.87	.83	.80	.84	.82	.79	.77
4.0	.86	.80	.75	.85	.79	.75	.83	.78	.74	.81	.77	.73	.79	.75	.72	.71
5.0	.80	.73	.69	.79	.73	.68	.77	.72	.68	.75	.71	.67	.74	.70	.67	.65
6.0	.74	.68	.63	.73	.67	.63	.72	.66	.62	.70	.65	.62	.69	.65	.61	.60
7.0	.69	.63	.58	.68	.62	.58	.67	.61	.57	.66	.61	.57	.65	.60	.57	.55
8.0	.65	.58	.53	.64	.58	.53	.63	.57	.53	.62	.57	.53	.61	.56	.53	.51
9.0	.60	.54	.50	.60	.54	.50	.59	.53	.49	.58	.53	.49	.57	.52	.49	.48
10.0	.57	.51	.46	.56	.50	.46	.55	.50	.46	.55	.50	.46	.54	.49	.46	.44



C Range: 0 - 360DEG
C Interval: 5.0DEG
Test Speed: HIGH
Temperature:25.3DEG
Operators:
Test Date:2015-11-17

γ Range: 0 - 90DEG
γ Interval: 0.5DEG
Test System:EVERFINE GO-2000B_V1 SYSTEM V2.0.287
Humidity:65.0%
Test Distance:8.000m [K=1.0000]
Remarks: 明纬电源
反光罩: 60度 PC罩: 透明

WEC AND CCEC

Test:U:220.4V I:0.9360A P:199.4W PF:0.9660 Lamp Flux:19531.4x1 lm		
NAME: LED HIGH BAY LIGHT	TYPE:	WEIGHT:2.5
SPEC.:PHILIPS 3030	DIM.:	SERIAL No.:
MFR.: QINHAN LIGHTING	SUR.:	PROTECTION ANGLE:

ρcc	80%			70%			50%			30%			10%			0
ρw	50%	30%	10%	50%	30%	10%	50%	30%	10%	50%	30%	10%	50%	30%	10%	0
ρfc	20%			20%			20%			20%			20%			0
RCR	RCR:Room Cavity Ratio						Wall Exitance Coefficients(WEC)									
0.0																
1.0	.193	.110	.035	.186	.106	.034	.174	.100	.032	.162	.093	.030	.151	.088	.028	
2.0	.188	.103	.032	.182	.100	.031	.171	.095	.030	.161	.091	.028	.152	.086	.027	
3.0	.180	.096	.029	.175	.094	.028	.166	.090	.027	.157	.086	.026	.149	.083	.026	
4.0	.172	.089	.026	.168	.088	.026	.160	.085	.025	.152	.082	.025	.145	.079	.024	
5.0	.164	.084	.024	.160	.082	.024	.153	.080	.024	.147	.077	.023	.141	.075	.023	
6.0	.157	.078	.022	.153	.077	.022	.147	.075	.022	.141	.073	.022	.136	.071	.021	
7.0	.149	.074	.021	.146	.073	.021	.141	.071	.020	.135	.069	.020	.131	.068	.020	
8.0	.142	.070	.020	.140	.069	.019	.135	.067	.019	.130	.066	.019	.126	.065	.019	
9.0	.136	.066	.018	.134	.065	.018	.129	.064	.018	.125	.063	.018	.121	.061	.018	
10.0	.130	.062	.017	.128	.062	.017	.124	.061	.017	.120	.060	.017	.116	.059	.017	

ρcc	80%			70%			50%			30%			10%			0
ρw	50%	30%	10%	50%	30%	10%	50%	30%	10%	50%	30%	10%	50%	30%	10%	0
ρfc	20%			20%			20%			20%			20%			0
RCR	RCR:Room Cavity Ratio						Ceiling Cavity Exitance Coefficients(CCEC)									
0.0	.190	.190	.190	.163	.163	.163	.111	.111	.111	.064	.064	.064	.020	.020	.020	
1.0	.172	.157	.144	.147	.135	.124	.101	.093	.085	.058	.054	.050	.019	.017	.016	
2.0	.158	.132	.111	.136	.114	.096	.093	.079	.067	.054	.046	.039	.017	.015	.013	
3.0	.147	.114	.087	.126	.098	.075	.087	.068	.053	.050	.040	.031	.016	.013	.010	
4.0	.138	.099	.070	.118	.086	.061	.081	.060	.043	.047	.035	.025	.015	.011	.008	
5.0	.130	.088	.057	.112	.076	.050	.077	.053	.035	.045	.031	.021	.014	.010	.007	
6.0	.123	.079	.047	.106	.068	.041	.073	.048	.029	.042	.028	.017	.014	.009	.006	
7.0	.117	.072	.040	.100	.062	.035	.069	.044	.025	.040	.026	.015	.013	.008	.005	
8.0	.111	.066	.034	.096	.057	.030	.066	.040	.021	.039	.024	.013	.012	.008	.004	
9.0	.106	.060	.030	.091	.052	.026	.063	.037	.018	.037	.022	.011	.012	.007	.004	
10.0	.101	.056	.026	.087	.049	.023	.061	.034	.016	.035	.020	.010	.011	.007	.003	

C Range: 0 - 360DEG
 C Interval: 5.0DEG
 Test Speed: HIGH
 Temperature:25.3DEG
 Operators:
 Test Date:2015-11-17

γ Range: 0 - 90DEG
 γ Interval: 0.5DEG
 Test System:EVERFINE GO-2000B_V1 SYSTEM V2.0.287
 Humidity:65.0%
 Test Distance:8.000m [K=1.0000]
 Remarks: 明纬电源
 反光罩: 60度 PC罩: 透明

UGR(Unified Glare Rating) Table

Test:U:220.4V I:0.9360A P:199.4W PF:0.9660 Lamp Flux:19531.4x1 lm										
NAME: LED HIGH BAY LIGHT					TYPE:			WEIGHT:2.5		
SPEC.:PHILIPS 3030					DIM.:			SERIAL No.:		
MFR.: QINHAN LIGHTING					SUR.:			PROTECTION ANGLE:		
ceiling/cavity	0.7	0.7	0.5	0.5	0.3	0.7	0.7	0.5	0.5	0.3
walls	0.5	0.3	0.5	0.3	0.3	0.5	0.3	0.5	0.3	0.3
working plane	0.2	0.2	0.2	0.2	0.2	0.2	0.2	0.2	0.2	0.2
Room dimensions	Viewed crosswise					Viewed endwise				
x = 2H y = 2H	29.5	30.5	29.7	30.7	30.9	29.5	30.6	29.8	30.8	31.0
3H	29.3	30.3	29.5	30.5	30.7	29.4	30.3	29.6	30.5	30.8
4H	29.2	30.1	29.5	30.3	30.6	29.3	30.2	29.6	30.4	30.6
6H	29.1	30.0	29.4	30.2	30.5	29.2	30.0	29.5	30.3	30.5
8H	29.0	29.9	29.4	30.1	30.4	29.1	30.0	29.4	30.2	30.5
12H	29.0	29.8	29.3	30.1	30.3	29.1	29.9	29.4	30.1	30.4
4H 2H	29.2	30.2	29.5	30.4	30.6	29.3	30.2	29.6	30.4	30.7
3H	29.0	29.8	29.4	30.1	30.4	29.1	29.9	29.4	30.2	30.5
4H	29.0	29.7	29.3	30.0	30.3	29.0	29.7	29.4	30.0	30.4
6H	28.9	29.5	29.2	29.8	30.2	28.9	29.6	29.3	29.9	30.2
8H	28.8	29.4	29.2	29.7	30.1	28.9	29.5	29.3	29.8	30.2
12H	28.8	29.3	29.2	29.7	30.1	28.8	29.4	29.2	29.7	30.1
8H 4H	28.8	29.4	29.2	29.7	30.1	28.9	29.5	29.3	29.8	30.2
6H	28.7	29.2	29.1	29.6	30.0	28.8	29.3	29.2	29.7	30.1
8H	28.7	29.1	29.1	29.5	29.9	28.7	29.1	29.2	29.6	30.0
12H	28.6	29.0	29.1	29.4	29.9	28.7	29.0	29.2	29.5	29.9
12H 4H	28.8	29.3	29.2	29.7	30.1	28.8	29.4	29.2	29.7	30.1
6H	28.7	29.1	29.1	29.5	29.9	28.7	29.1	29.2	29.6	30.0
8H	28.6	29.0	29.1	29.4	29.9	28.7	29.0	29.2	29.5	29.9
Variations with the observer position at spacings:										
S = 1.0H	+ 2.5 / -14.3					+ 2.1 / - 5.7				
1.5H	+ 2.8 / - 6.2					+ 2.1 / - 3.5				
2.0H	+ 6.2 / -21.2					+ 4.8 / -22.7				

CIE Pub.117 Corrected 19531 lm Total Lamp Luminous Flux.(8log(F/F0) = 10.3)

C Range: 0 - 360DEG
 C Interval: 5.0DEG
 Test Speed: HIGH
 Temperature:25.3DEG
 Operators:
 Test Date:2015-11-17

γ Range: 0 - 90DEG
 γ Interval: 0.5DEG
 Test System:EVERFINE GO-2000B_V1 SYSTEM V2.0.287
 Humidity:65.0%
 Test Distance:8.000m [K=1.0000]
 Remarks: 明纬电源
 反光罩: 60度 PC罩: 透明

UTILIZATION FACTORS TABLE

Test:U:220.4V I:0.9360A P:199.4W PF:0.9660 Lamp Flux:19531.4x1 lm		
NAME: LED HIGH BAY LIGHT	TYPE:	WEIGHT:2.5
SPEC.:PHILIPS 3030	DIM.:	SERIAL No.:
MFR.: QINHAN LIGHTING	SUR.:	PROTECTION ANGLE:

REFLECTANCE										
Ceiling	0.8	0.8	0.8	0.7	0.7	0.7	0.5	0.5	0.5	0
Walls	0.7	0.5	0.3	0.7	0.5	0.3	0.7	0.5	0.3	0
Working plane	0.2	0.2	0.2	0.2	0.2	0.2	0.2	0.2	0.2	0
ROOM INDEX	UTILIZATION FACTORS(PERCENT) $k(RI) \times RCR = 5$									
k = 0.60	79	71	66	78	70	66	77	70	66	61
0.80	88	80	76	87	80	75	85	79	75	70
1.00	94	87	83	93	87	82	91	87	82	77
1.25	99	93	89	98	92	88	96	91	88	83
1.50	103	97	93	101	96	92	99	95	91	86
2.00	106	101	98	105	100	97	102	98	95	90
2.50	108	104	100	107	103	99	103	100	98	91
3.00	110	106	103	108	105	102	105	102	100	93
4.00	112	109	106	110	107	105	107	104	102	95
5.00	114	111	109	112	109	107	107	106	104	96
ROOM INDEX	UF(total)									Direct
According to DIN EN 13032-2 2004			Suspended				SHRNOM = 1.25			

C Range: 0 - 360DEG
 C Interval: 5.0DEG
 Test Speed: HIGH
 Temperature:25.3DEG
 Operators:
 Test Date:2015-11-17

γ Range: 0 - 90DEG
 γ Interval: 0.5DEG
 Test System:EVERFINE GO-2000B_V1 SYSTEM V2.0.287
 Humidity:65.0%
 Test Distance:8.000m [K=1.0000]
 Remarks: 明纬电源
 反光罩: 60度 PC罩: 透明

ISOCANDELA DIAGRAM

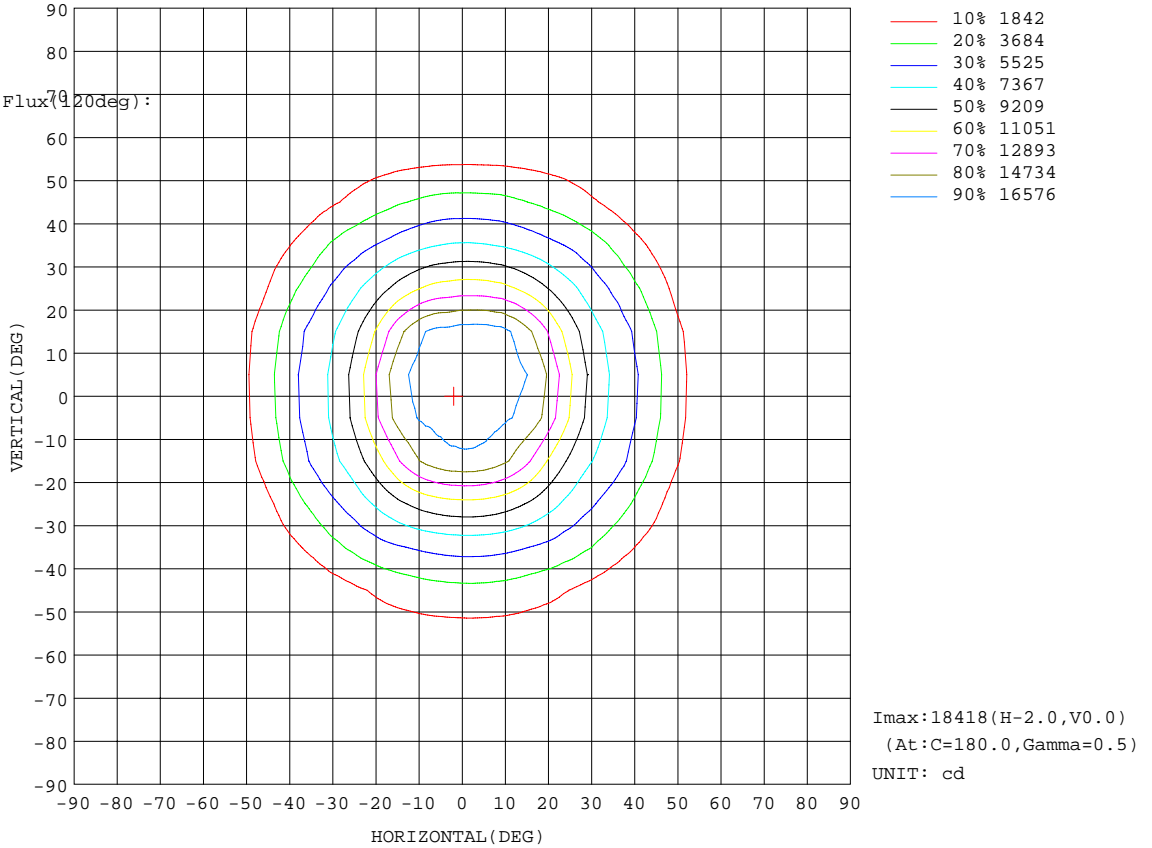
Test:U:220.4V I:0.9360A P:199.4W PF:0.9660 Lamp Flux:19531.4x1 lm		
NAME: LED HIGH BAY LIGHT	TYPE:	WEIGHT:2.5
SPEC.:PHILIPS 3030	DIM.:	SERIAL No.:
MFR.: QINHAN LIGHTING	SUR.:	PROTECTION ANGLE:

Conical surface Flux(90deg):

17308 lm
 %lum = 88.6%
 %lamp = 88.6%

Conical surface Flux(70deg):

19459 lm
 %lum = 99.6%
 %lamp = 99.6%

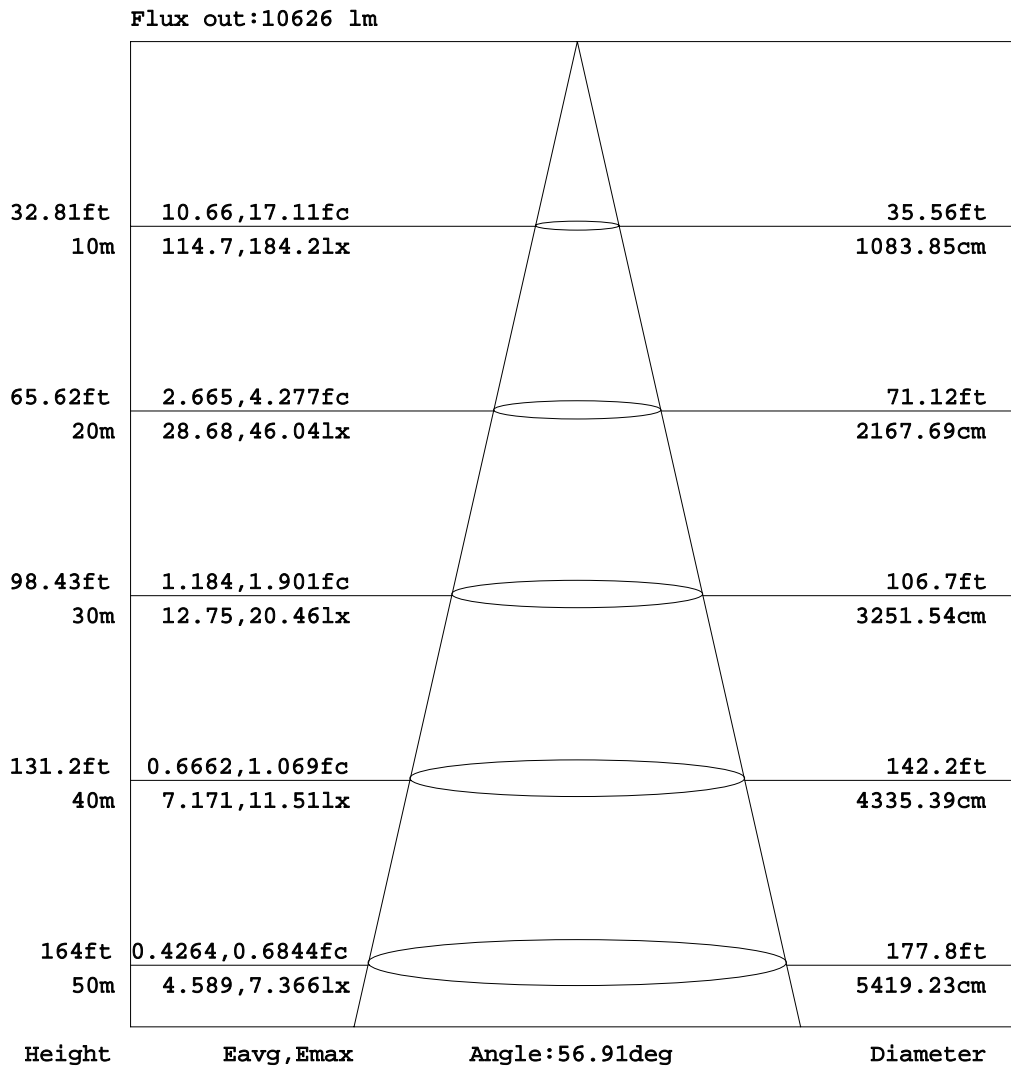


C Range: 0 - 360DEG
 C Interval: 5.0DEG
 Test Speed: HIGH
 Temperature:25.3DEG
 Operators:
 Test Date:2015-11-17

γ Range: 0 - 90DEG
 γ Interval: 0.5DEG
 Test System:EVERFINE GO-2000B_V1 SYSTEM V2.0.287
 Humidity:65.0%
 Test Distance:8.000m [K=1.0000]
 Remarks: 明纬电源
 反光罩: 60度 PC罩: 透明

AAI Figure

Test:U:220.4V I:0.9360A P:199.4W PF:0.9660 Lamp Flux:19531.4x1 lm		
NAME: LED HIGH BAY LIGHT	TYPE:	WEIGHT:2.5
SPEC.:PHILIPS 3030	DIM.:	SERIAL No.:
MFR.: QINHAN LIGHTING	SUR.:	PROTECTION ANGLE:



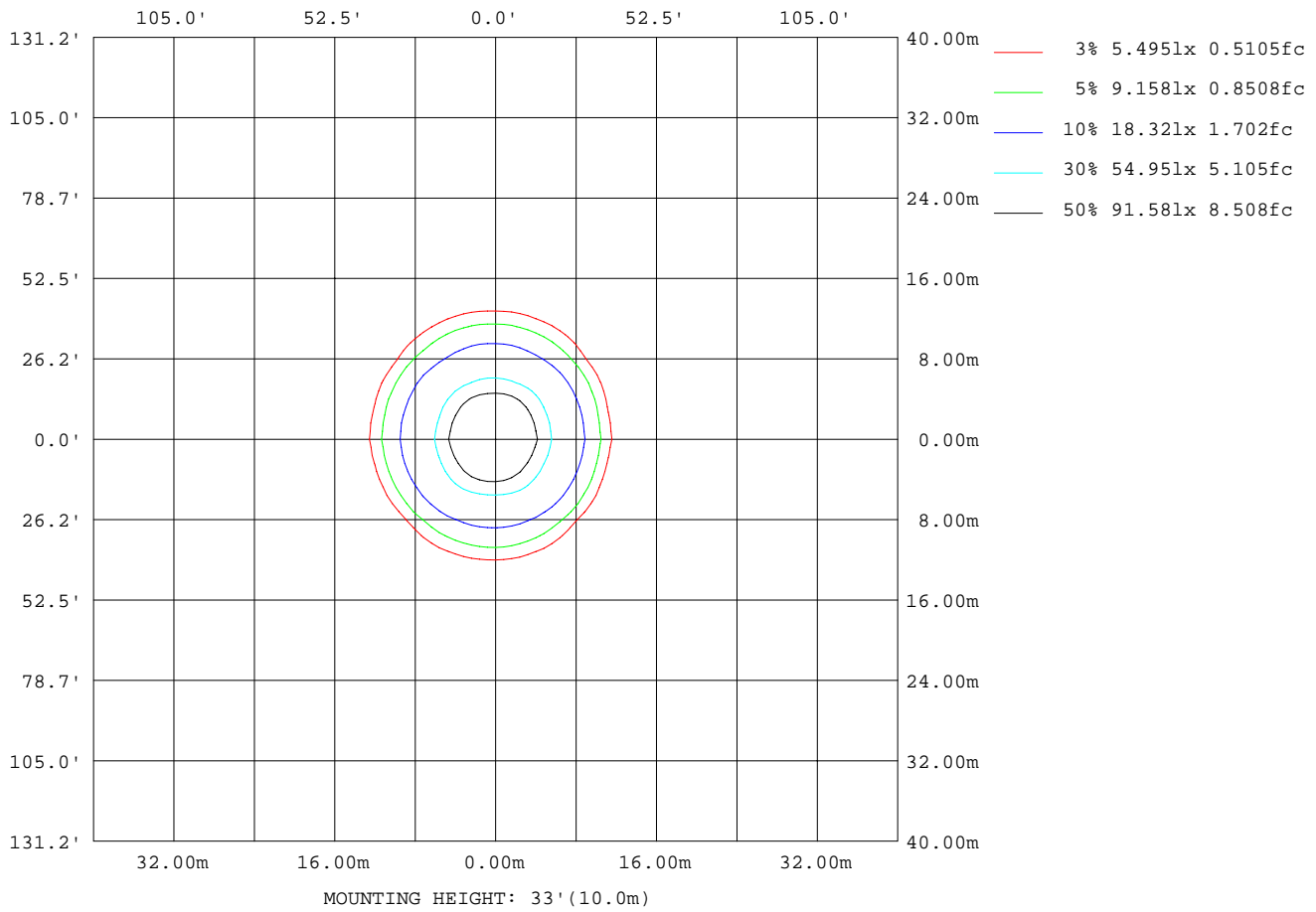
Note:The Curves indicate the illuminated area and the average illumination when the luminaire is at different distance.

C Range: 0 - 360DEG
 C Interval: 5.0DEG
 Test Speed: HIGH
 Temperature:25.3DEG
 Operators:
 Test Date:2015-11-17

γ Range: 0 - 90DEG
 γ Interval: 0.5DEG
 Test System:EVERFINE GO-2000B_V1 SYSTEM V2.0.287
 Humidity:65.0%
 Test Distance:8.000m [K=1.0000]
 Remarks: 明纬电源
 反光罩: 60度 PC罩: 透明

ISOLUX DIAGRAM

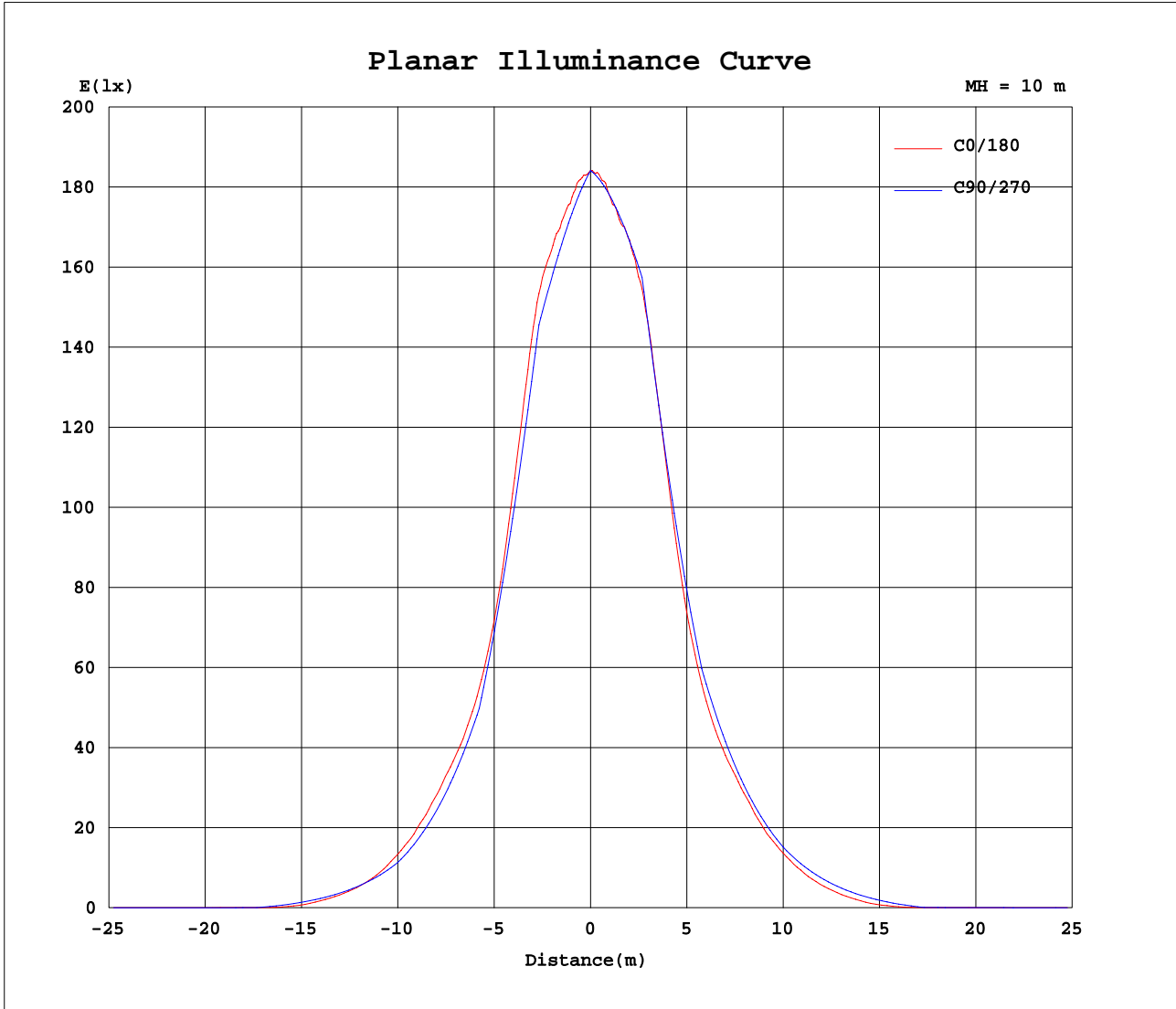
Test:U:220.4V I:0.9360A P:199.4W PF:0.9660 Lamp Flux:19531.4x1 lm		
NAME: LED HIGH BAY LIGHT	TYPE:	WEIGHT:2.5
SPEC.:PHILIPS 3030	DIM.:	SERIAL No.:
MFR.: QINHAN LIGHTING	SUR.:	PROTECTION ANGLE:



C Range: 0 - 360DEG
 C Interval: 5.0DEG
 Test Speed: HIGH
 Temperature:25.3DEG
 Operators:
 Test Date:2015-11-17

γ Range: 0 - 90DEG
 γ Interval: 0.5DEG
 Test System:EVERFINE GO-2000B_V1 SYSTEM V2.0.287
 Humidity:65.0%
 Test Distance:8.000m [K=1.0000]
 Remarks: 明纬电源
 反光罩: 60度 PC罩: 透明

Planar Illuminance Curve



C Range: 0 - 360DEG
 C Interval: 5.0DEG
 Test Speed: HIGH
 Temperature: 25.3DEG
 Operators:
 Test Date: 2015-11-17

γ Range: 0 - 90DEG
 γ Interval: 0.5DEG
 Test System: EVERFINE GO-2000B_V1 SYSTEM V2.0.287
 Humidity: 65.0%
 Test Distance: 8.000m [K=1.0000]
 Remarks: 明纬电源
 反光罩: 60度 PC罩: 透明

LUMINOUS DISTRIBUTION INTENSITY DATA

Test:U:220.4V I:0.9360A P:199.4W PF:0.9660 Lamp Flux:19531.4x1 lm		
NAME: LED HIGH BAY LIGHT	TYPE:	WEIGHT:2.5
SPEC.:PHILIPS 3030	DIM.:	SERIAL No.:
MFR.: QINHAN LIGHTING	SUR.:	PROTECTION ANGLE:

Table--2

UNIT: x10cd

C(DEG) γ (DEG)	95	100	105	110	115	120	125	130	135	140	145	150	155	160	165	170	175	180	185
0	1841	1841	1841	1841	1841	1841	1841	1841	1841	1841	1841	1841	1841	1841	1841	1841	1841	1841	1841
5	1767	1766	1766	1768	1771	1772	1771	1772	1775	1780	1785	1790	1795	1796	1799	1803	1807	1813	1811
10	1692	1691	1691	1689	1693	1689	1687	1684	1689	1692	1693	1697	1705	1717	1732	1748	1765	1781	1773
15	1617	1614	1614	1610	1601	1595	1584	1580	1576	1576	1575	1582	1588	1602	1626	1652	1682	1715	1695
20	1336	1342	1353	1362	1373	1386	1394	1400	1389	1373	1362	1354	1352	1360	1374	1396	1428	1468	1441
25	1053	1061	1070	1082	1095	1105	1110	1111	1101	1093	1084	1074	1066	1064	1068	1078	1097	1128	1106
30	771	779	792	811	831	849	860	862	858	850	847	843	838	831	828	831	842	861	847
35	619	619	620	625	632	644	659	669	671	662	659	663	678	684	677	674	679	693	685
40	469	468	470	472	479	488	496	506	507	506	507	510	517	533	534	530	535	552	545
45	319	319	320	319	324	330	334	336	340	347	346	345	350	360	370	362	367	387	376
50	214	213	210	205	198	184	176	179	186	186	192	198	193	196	207	209	209	222	219
55	109	111	113	114	113	107	94.5	78.2	48.7	59.4	77.9	80.4	63.1	65.9	68.5	68.2	65.7	74.3	72.1
60	5.49	11.0	19.0	28.4	37.0	42.1	40.7	32.8	18.1	5.59	6.55	18.8	10.5	5.65	9.00	5.91	5.76	5.92	5.78
65	2.60	2.59	2.55	2.55	2.53	2.51	2.48	6.22	4.78	3.27	3.15	3.08	3.20	3.20	3.23	3.24	3.24	3.29	3.21
70	1.66	1.66	1.66	1.68	1.69	1.70	1.71	1.70	1.68	1.64	1.78	1.87	1.87	1.86	1.89	1.89	1.94	1.94	1.92
75	0.71	0.74	0.77	0.82	0.87	0.92	0.96	1.00	1.02	1.04	1.03	1.01	1.03	1.05	1.03	1.03	1.05	1.05	1.04
80	0.01	0.02	0.05	0.08	0.13	0.19	0.25	0.32	0.40	0.48	0.53	0.55	0.56	0.54	0.52	0.50	0.49	0.50	0.49
85	0.00	0.00	0.00	0.00	0.00	0.00	0.00	0.00	0.00	0.00	0.00	0.00	0.10	0.23	0.27	0.24	0.15	0.14	0.14
90	0.00	0.00	0.00	0.00	0.00	0.00	0.00	0.00	0.00	0.00	0.00	0.00	0.00	0.00	0.00	0.00	0.00	0.07	0.00

C Range: 0 - 360DEG
 C Interval: 5.0DEG
 Test Speed: HIGH
 Temperature:25.3DEG
 Operators:
 Test Date:2015-11-17

γ Range: 0 - 90DEG
 γ Interval: 0.5DEG
 Test System:EVERFINE GO-2000B_V1 SYSTEM V2.0.287
 Humidity:65.0%
 Test Distance:8.000m [K=1.0000]
 Remarks: 明纬电源
 反光罩: 60度 PC罩: 透明

LUMINOUS DISTRIBUTION INTENSITY DATA

Test:U:220.4V I:0.9360A P:199.4W PF:0.9660 Lamp Flux:19531.4x1 lm		
NAME: LED HIGH BAY LIGHT	TYPE:	WEIGHT:2.5
SPEC.:PHILIPS 3030	DIM.:	SERIAL No.:
MFR.: QINHAN LIGHTING	SUR.:	PROTECTION ANGLE:

Table--3

UNIT: x10cd

C(DEG) γ (DEG)	190	195	200	205	210	215	220	225	230	235	240	245	250	255	260	265	270	275	280
0	1841	1841	1841	1841	1841	1841	1841	1841	1841	1841	1841	1841	1841	1841	1841	1841	1841	1841	1841
5	1809	1809	1809	1810	1809	1807	1805	1803	1804	1806	1809	1810	1808	1807	1808	1810	1810	1808	1806
10	1765	1757	1750	1746	1745	1748	1752	1753	1750	1752	1754	1761	1764	1773	1776	1777	1778	1778	1779
15	1677	1663	1651	1650	1655	1659	1672	1682	1691	1703	1714	1718	1717	1725	1739	1746	1747	1752	1751
20	1424	1416	1418	1428	1449	1471	1495	1526	1542	1540	1528	1516	1498	1477	1471	1473	1471	1477	1485
25	1096	1097	1107	1125	1153	1191	1207	1224	1234	1236	1236	1232	1224	1210	1199	1198	1196	1198	1204
30	843	847	860	879	897	911	925	941	953	960	956	951	943	936	928	923	920	918	921
35	683	688	699	704	705	715	723	735	736	728	727	734	742	752	756	757	756	753	749
40	545	554	564	556	552	562	578	579	573	567	566	574	580	588	594	594	593	590	588
45	379	398	396	395	397	409	414	414	409	409	410	417	422	428	432	432	429	428	430
50	228	232	230	238	243	244	247	253	252	249	263	274	285	288	291	290	288	288	290
55	84.3	87.1	87.8	96.5	112	106	102	107	134	146	156	159	160	156	153	150	148	148	152
60	6.04	10.7	5.99	20.3	27.5	7.99	24.1	46.2	64.2	66.1	60.9	52.4	40.1	27.0	16.3	9.30	7.26	9.28	16.2
65	3.19	3.17	3.17	3.24	3.13	3.44	4.85	12.8	11.7	3.04	3.28	3.57	3.85	4.10	4.41	4.78	5.18	4.77	4.41
70	1.87	1.86	1.84	1.85	1.88	1.85	1.76	1.87	1.97	2.06	2.17	2.32	2.45	2.57	2.71	2.89	3.09	2.88	2.73
75	1.02	1.01	1.02	1.00	1.00	1.05	1.09	1.13	1.15	1.16	1.15	1.14	1.11	1.08	1.04	1.01	1.01	1.03	1.07
80	0.49	0.48	0.48	0.50	0.52	0.51	0.49	0.44	0.37	0.30	0.23	0.17	0.11	0.06	0.03	0.01	0.00	0.01	0.03
85	0.16	0.16	0.15	0.08	0.00	0.00	0.00	0.00	0.00	0.00	0.00	0.00	0.00	0.00	0.00	0.00	0.00	0.00	0.00
90	0.00	0.00	0.00	0.00	0.00	0.00	0.00	0.00	0.00	0.00	0.00	0.00	0.00	0.00	0.00	0.00	0.00	0.00	0.00

C Range: 0 - 360DEG
 C Interval: 5.0DEG
 Test Speed: HIGH
 Temperature:25.3DEG
 Operators:
 Test Date:2015-11-17

γ Range: 0 - 90DEG
 γ Interval: 0.5DEG
 Test System:EVERFINE GO-2000B_V1 SYSTEM V2.0.287
 Humidity:65.0%
 Test Distance:8.000m [K=1.0000]
 Remarks: 明纬电源
 反光罩: 60度 PC罩: 透明

