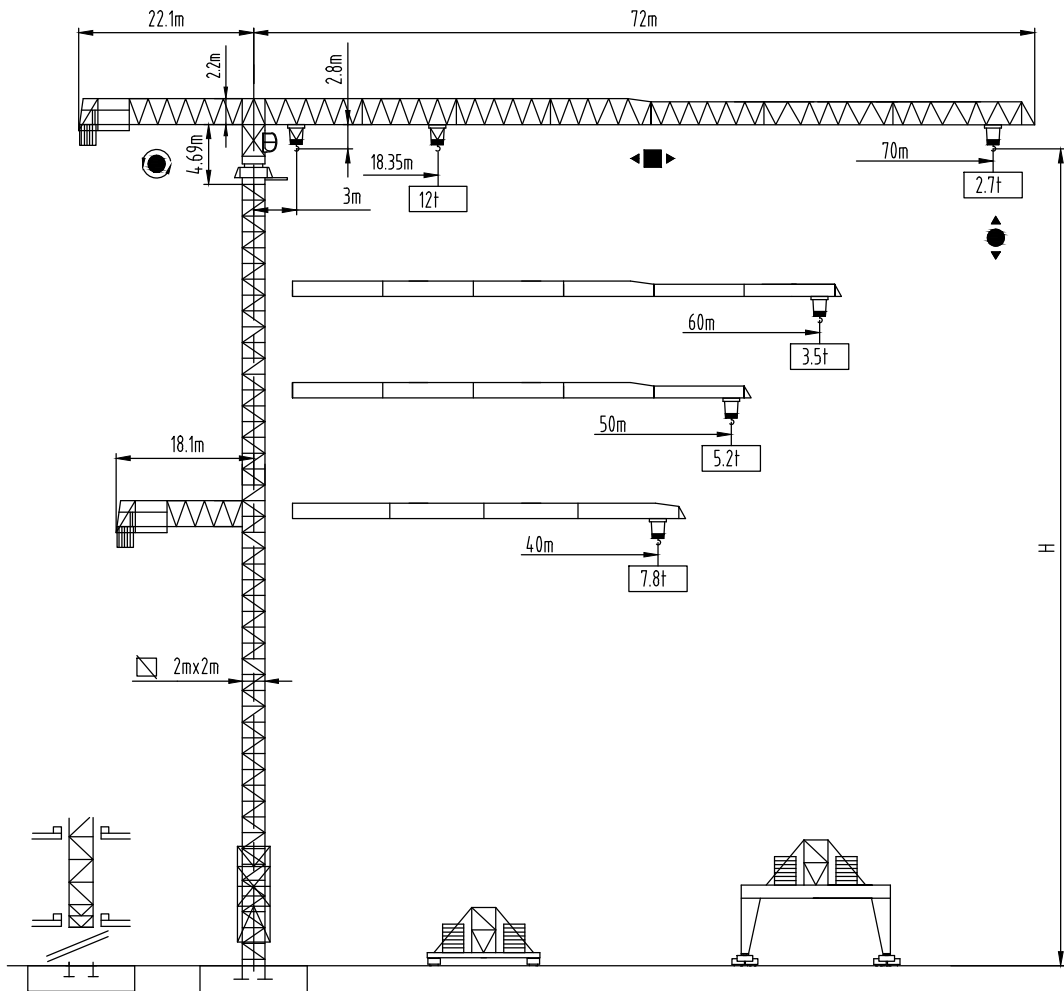


Autodesk



沈阳三洋建筑机械有限公司  
SHENYANG SANYO BUILDING MACHINERY CO., LTD

TOWER CRANE QTZ型200tm  
(R70/27)



Autodesk

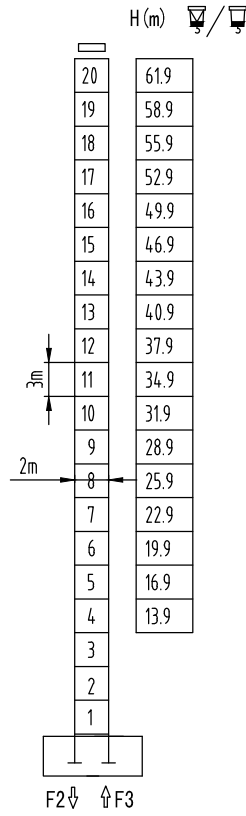
Autodesk

Autodesk

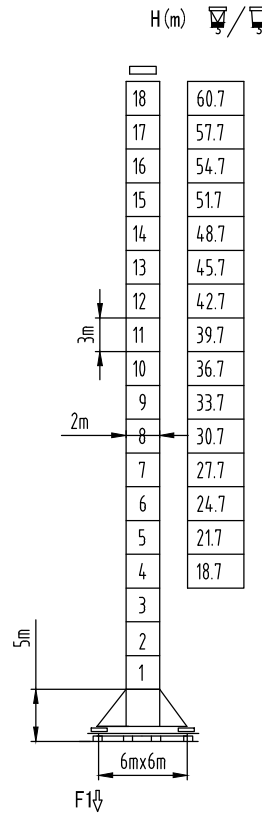


塔身截面 Mast □ 2mx2m

40-70m



F2	● 183t	■ 197t
F3	● 120t	■ 142t
⊕	93t	



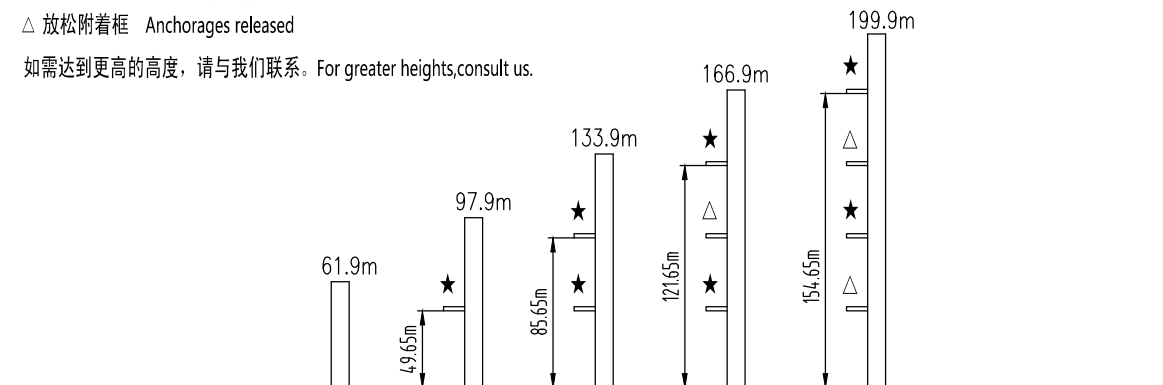
F1	● 149t	■ 115t
⊕	99t	

固定式附着高度 Anchoring height of stationary crane

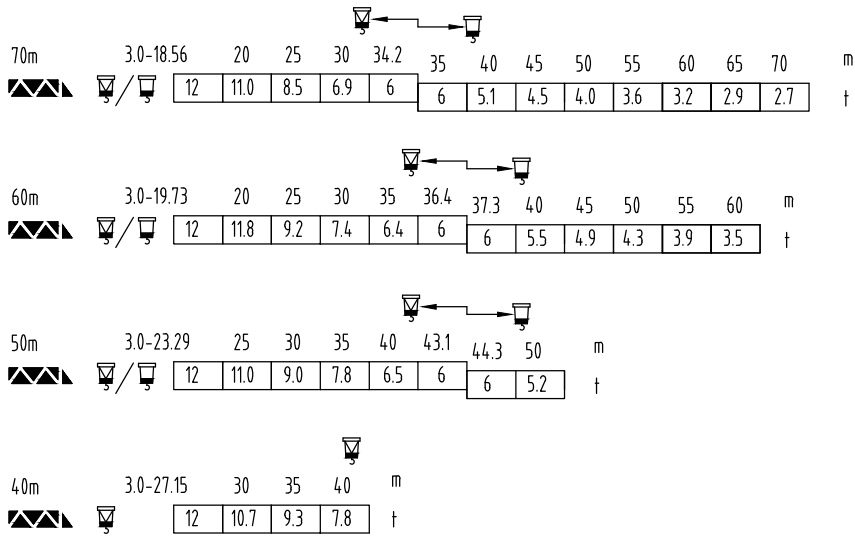
★ 紧固附着框 Anchorages tightened

△ 放松附着框 Anchorages released

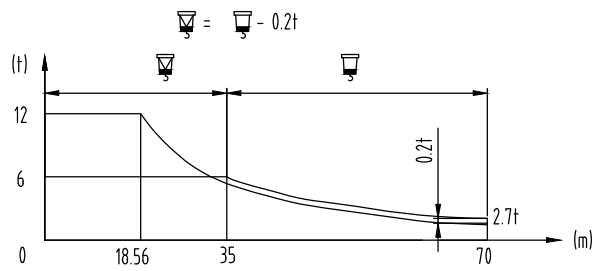
如需达到更高的高度, 请与我们联系。For greater heights, consult us.



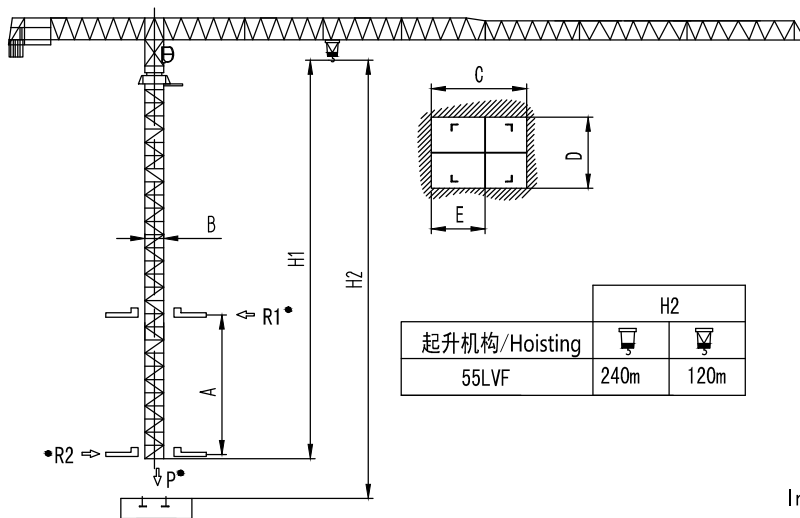
载荷特性 Load diagrams



标准小车可使用 2/4倍率绳 standard trolley 2/4 fall.  
 使用四倍率时, 应从二倍率的载荷中减去0.2吨  
 When using  $\square$  subtract 0.2t from the loads  $\square$



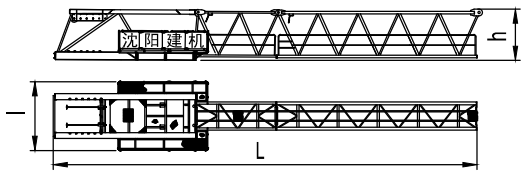
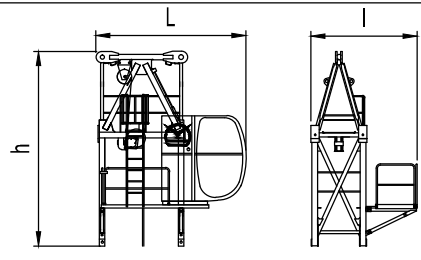
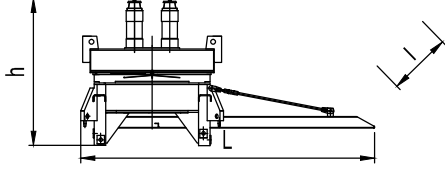
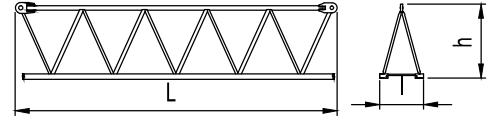
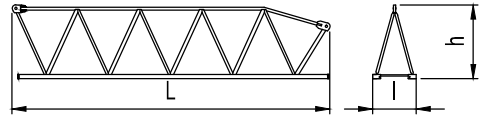
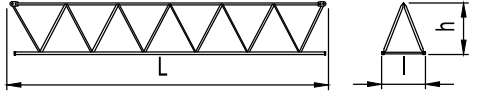
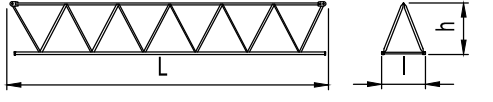
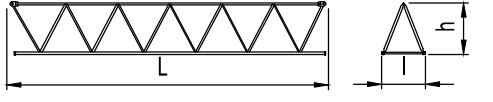
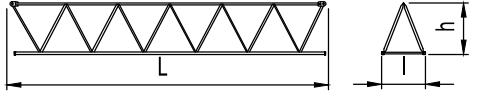
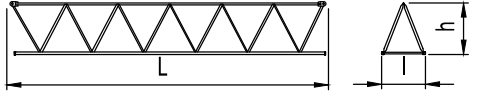
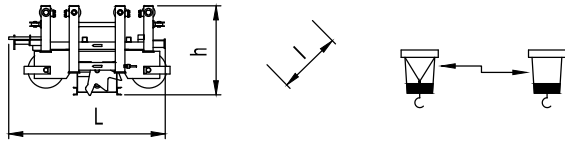
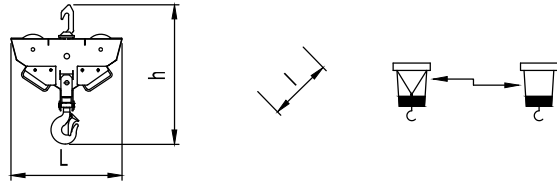
内爬塔机 Climbing crane



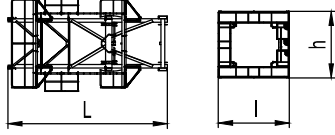
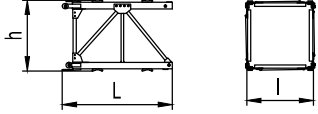
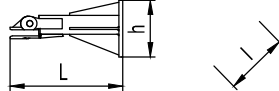
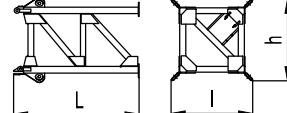
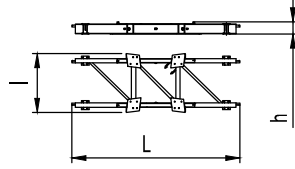
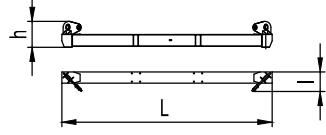
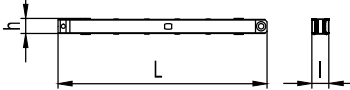

\* 工作状态无系数  
 In service without coefficient

# Autodesk

外形尺寸重量表 Dimensions weights

塔机回转部分 Slewing		L(m)	l(m)	h(m)	Kg
平衡臂 Counter-jib		21	3.43	2.55	8994
塔头 Cat-head		4.1	3.05	5.3	3900
回转机构 Slewing mechanism		5.1	2.5	2.65	7500
起重臂节 Jib section		10.34	1.4	2.45	3954
起重臂节 Jib section		10.31	1.4	2.43	3320
起重臂节 Jib section		10.28	1.4	2.4	2511
起重臂节 Jib section		10.23	1.4	2.37	2374
起重臂节 Jib section		10.23	1.4	1.77	1759
起重臂节 Jib section		10.17	1.4	1.74	1457
起重臂节 Jib section		10.15	1.4	1.72	971
变幅小车 Trolley		1.82	1.7	0.95	485
吊钩滑轮组 Hook assembly		1.41	0.42	1.77	460

# Autodesk

顶升装置 Telescoping equipment		L(m)	l(m)	h(m)	Kg
顶升套架 Telescopic cage		7.26	4.3	4.05	4825
塔身部分 Mast		L(m)	l(m)	h(m)	Kg
标准节 Standard mast		3.3	2.0	2.1	2010
底部 Base					
固定支脚 Fixing angles		1.365	0.8	0.8	490
底架塔节 Chassis mast		3.82	2.5	2.5	4077
底架纵梁 Side member		7.14	2.51	0.52	1840
底架横梁 Traverse		6.38	0.59	0.8	1264x2
底架撑杆 Brace rod		4.45	0.35	0.34	542x4
底架水平杆 Horizontal member		2.44	0.24	0.24	156x4

Autodesk

Autodesk

Autodesk

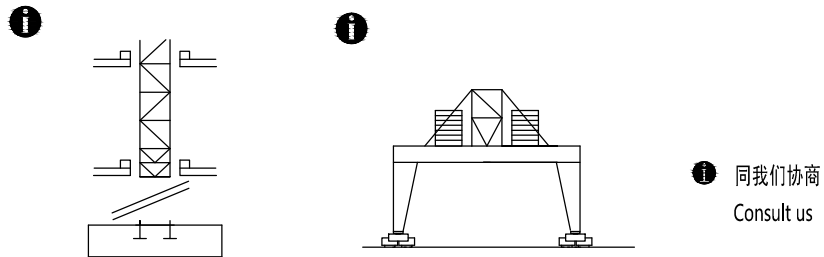
# Autodesk

机构特性 Mechanisms specification			C					C					 m	Kw	
起升 Hoisting		55LVF	m/min	0-4.8	0-20	0-40	0-60	0-80	0-2.4	0-10	0-20	0-30	0-40	500	55
		t	6	6	6	3	1.5	12	12	12	6	3			
变幅 Trolleying		5.5TVF	m/min	0-50									5.5		
回转 Slewing		9SVF	r/min	0-0.8									9x3		
		14.5SVT											14.5Nm x 3		
行走 Travelling		5.2TRVF	m/min	0-15									5.2x4		
电源		Power Supply		380V 50Hz / 440V 60Hz											
KVA 供电容量		Necessary Electric Power		14.0KVA											

平衡臂配重  
Counter-jib ballast

		(t)
70m	22.1m	20.33
60m	22.1m	17.32
50m	22.1m	14.06
40m	18.1m	16.72

可变换的其它安装方式  
Mounting possibilities



F 反力      ● 工作状态      In service      ⊕ 自重      不带载荷及配重，最大臂长及标准高度时的自重。  
Reactions    ■ 非工作状态      Out of service      Self-load      Without load and counter-weight with longest jib and standard height