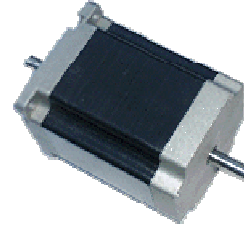


HYBRID STEPPER MOTOR H1101/H1106(110mm) – 1.8°,1.2°/step, 2/4/3 Phase

GERNERAL SPECIFICATIONS

Resistance Accuracy ----- $\pm 10\%$
 Inductance Accuracy ----- $\pm 20\%$
 Temperature Rise ----- 80°C Max.
 Ambient Temperature ----- $-10^{\circ}\text{C} \sim 50^{\circ}\text{C}$
 Insulation Resistance ----- 100Mohm Min, 50VDC
 Dielectric Strength ----- 500VAC for one minute
 Shaft Radial Play ----- 0.06Max. (450 g-load)
 Shaft Axial Play ----- 0.08Max.(450 g-load)

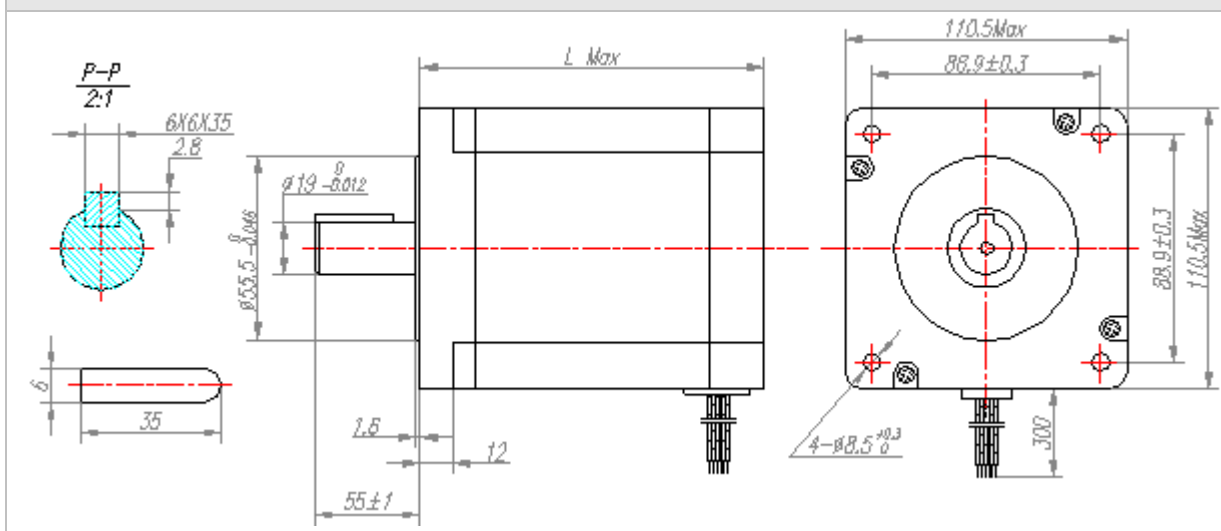
Picture



Electrical Specification

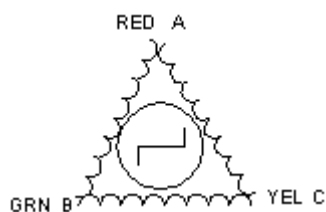
Series Model	Step Angle (°)	L (mm)	Rated Current (A)	Phase Resistance (Ω)	Phase Inductance (mH)	Holding Torque (N. m)	Detent Torque (N. m)	Lead Wire (NO.)	Motor Weight (kg)
H1101-00942	1.8	115	4.2	0.94	7.0	8.5	24.5	8	5.8
H1101-01442	1.8	150	4.2	2.3	18.5	14.2	35.5	8	8.4
H1101-01850	1.8	165	5.0	1.3	14.0	17.8	45.5	8	9.5
H1106-00840	1.2	120	4.0	2.4	19.2	8.0	20.5	3	6.2
H1106-01240	1.2	140	4.0	2.1	22.0	12.0	30.5	3	8.0
H1106-01650	1.2	170	5.0	1.3	20.0	16.0	40.5	3	10

Mechanical Dimensions

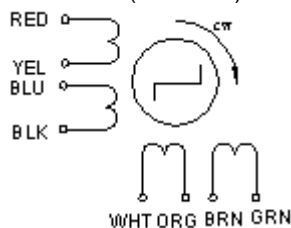


Standard Leadwire Configuration

3 LEADS



UNI/BI-POLAR(8 LEADS)



Complementary Products:

- Special shaft
- Encoders
- Connector
- Long Leadwire