

CLASS-D DIGITAL MODULE WITH DSP

SPECIFICATIONS	
ITEM	D3-215
8Ω Power	L:1500W + M:1500W + H:500W
4Ω Power	L:1800W + M:1800W + H:900W
Frequency Response	20Hz-20KHz ±1dB
THD+N 1KHz 1W 8Ω	<0.1%
Signal to Noise Ratio 1KHz	>100dB
Channel Separation 1KHz	>80dB
Class	D
Protection	Short,DCP,OVP,UVP,OCP,OTP
Operating Voltage	90V-135V / 180V-265V
Input Sensitivity	1.0V
Input Impedance	20KΩ
DSP Fuction	MUTE,Polarity,Gain,Delay,Limiter,Mixer,EQ,Xover
DSP Control	USB , RS-485, NET
Dimensions(W×H×D)	550×160×130mm
Packing Dimension	640×260×225mm
Net Weight(kg)	7
Gross Weight(kg)	8.2

Contents. 1

Important note. 2

Input and output. 3

Input and output Installation dimension. 4

PC interface. 5

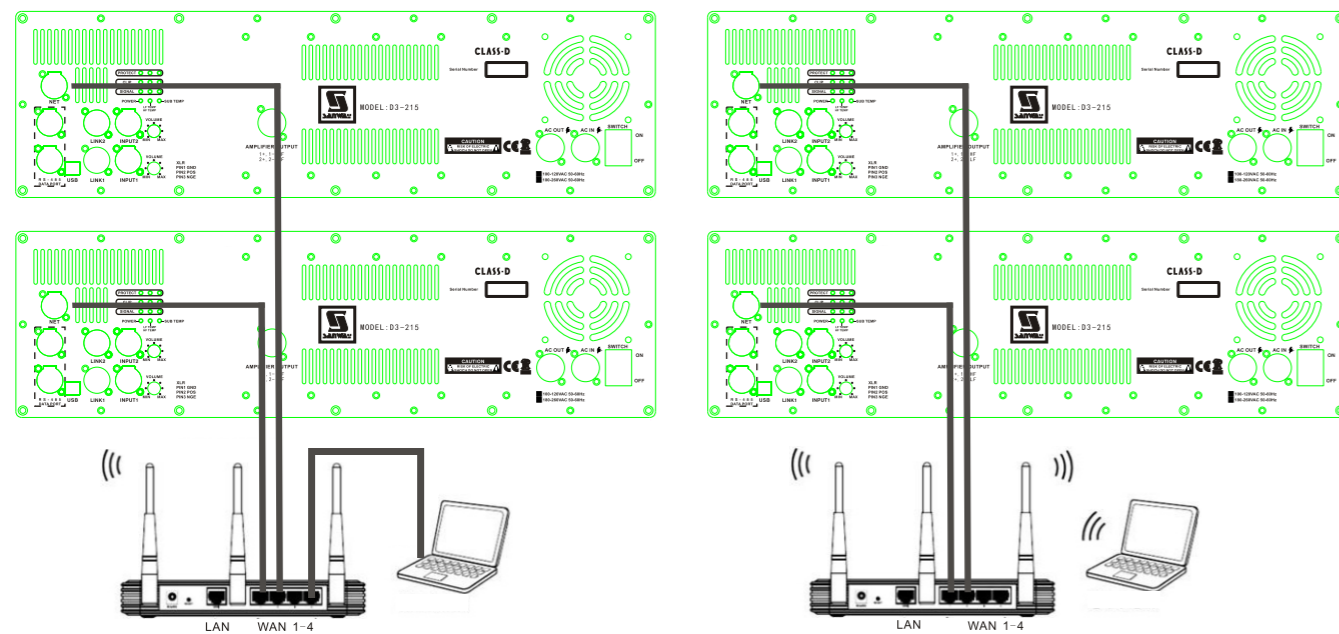
PC interface. 6

PC interface. 7

Specifications Network application. 8

Cable connection

Wifi connection



Important Note

WARNING NOTICES

SAFEGUARDS

Electrical energy can perform many useful functions, This unit has been engineered and manufactured to assure your personal safety. Improper use can result in potential electrical shock or fire hazards. In order not to defeat the safeguards, observe the following precautions for its installation, use and servicing.

Explanation of Graphical Symbols



**CAUTION
RISK OF ELECTRIC SHOCK
DO NOT OPEN**



**CAUTION
RISK OF ELECTRIC SHOCK :
OPEN ONLY IF QUALIFIED
AS SERVICE PERSONNEL**

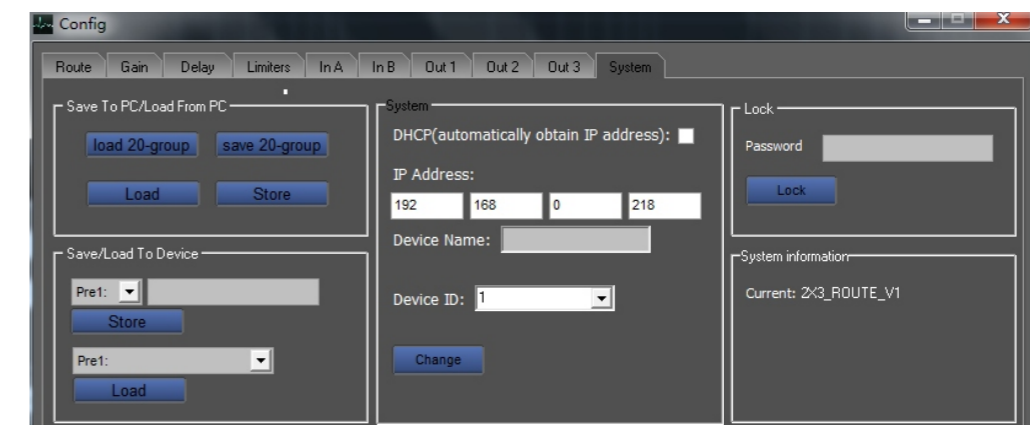
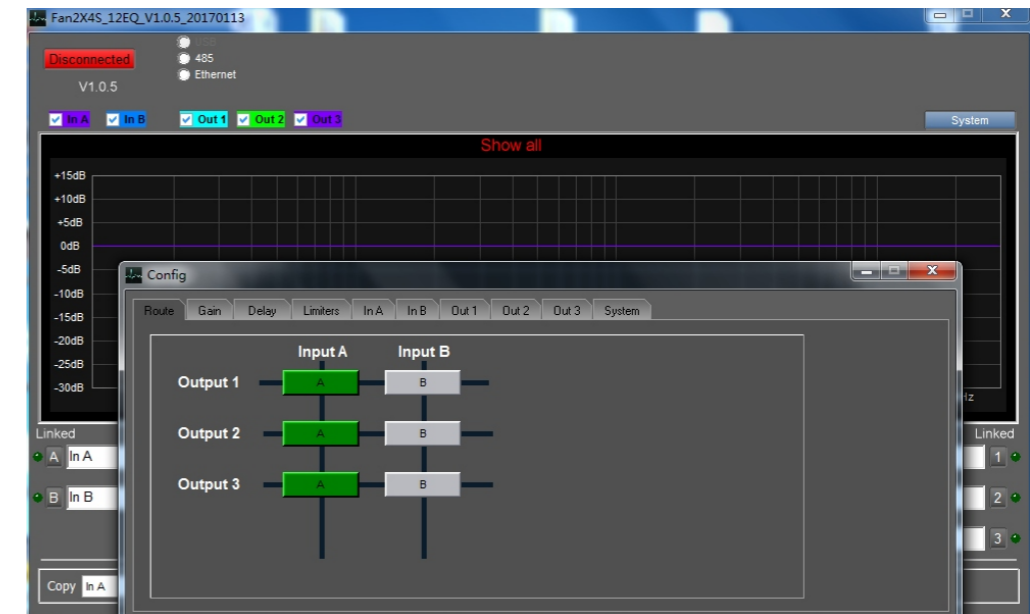
**WARNING: TO PREVENT FIRE OR ELECTRIC SHOCK, DO NOT EXPOSE
THIS EQUIPMENT TO RAIN OR MOISTURE**

IMPORTANT NOTE

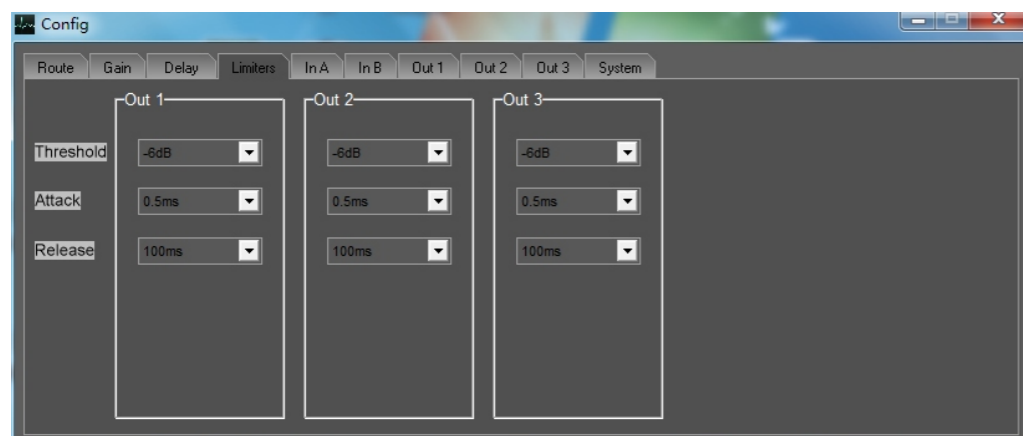
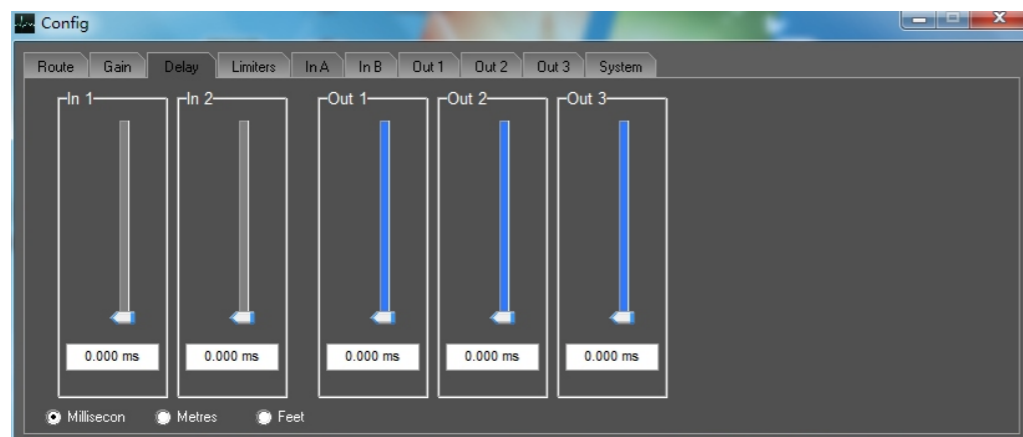
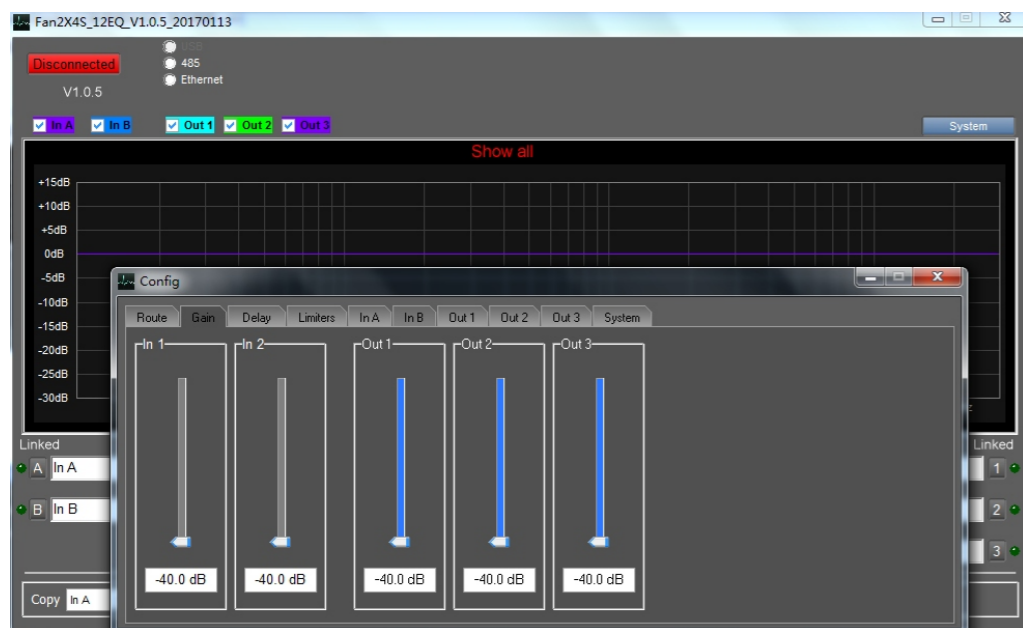
ATTENTION: This unit must be protected from damp because of the risk of fire and the possibility of electric shocks.

1. Make sure that you have the correct mains voltage. Only operate the unit at the mains voltage marked on the rear panel.
2. Make sure that nothing especially no metal objects are inserted into the device. This could result in electric shock or malfunction.
3. If the unit is subjected to extreme fluctuations of temperature e.g. On being transported from outside into a heated room, condensation can form. This unit should not be used until it has reached room temperature.
4. In the event of water or any other fluid being accidentally spilt on the unit switch the unit off immediately and send it to a qualified service workshop for inspection.
5. Make sure that the unit is always well ventilated and never exposed to direct sunlight
6. Do not use sprays to clean the unit as they have a detrimental effect on the unit and could ignite suddenly.
7. The machine use single power switch, please cut off the power before fix.
8. Please do not put the cup, vessel of flower or container above the machine, in case the leak out water then cause the leakage current off the machine.

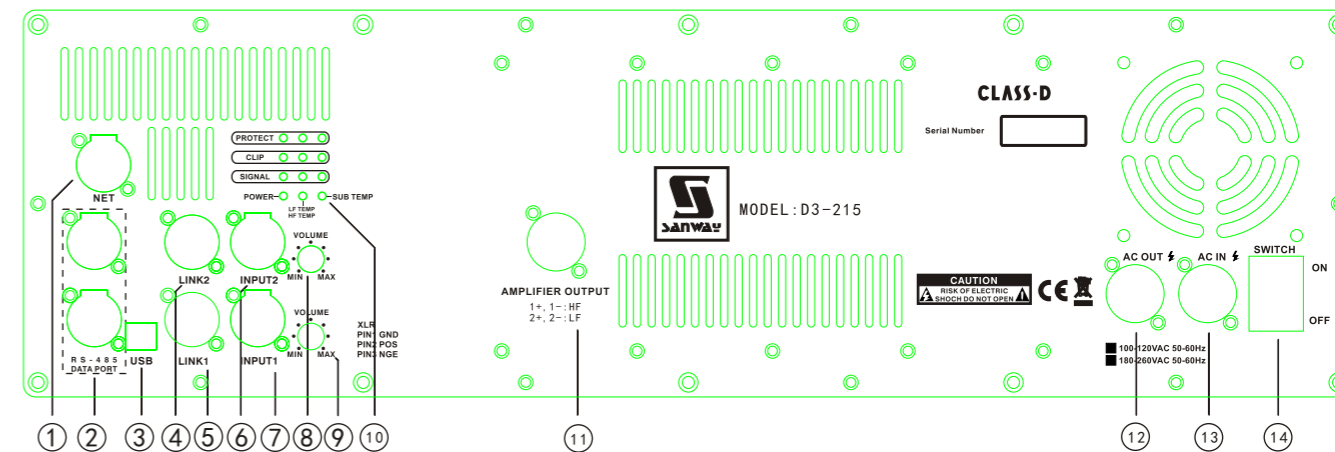
PC interface



PC interface



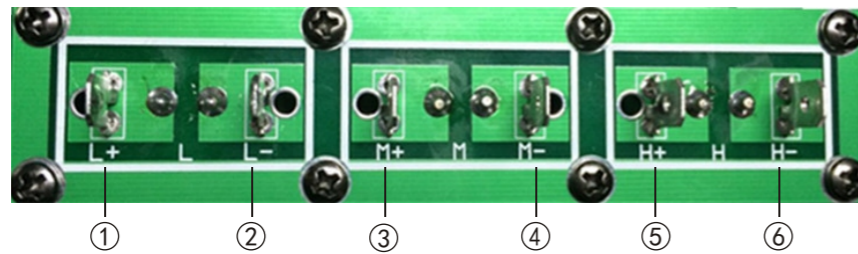
Input and output



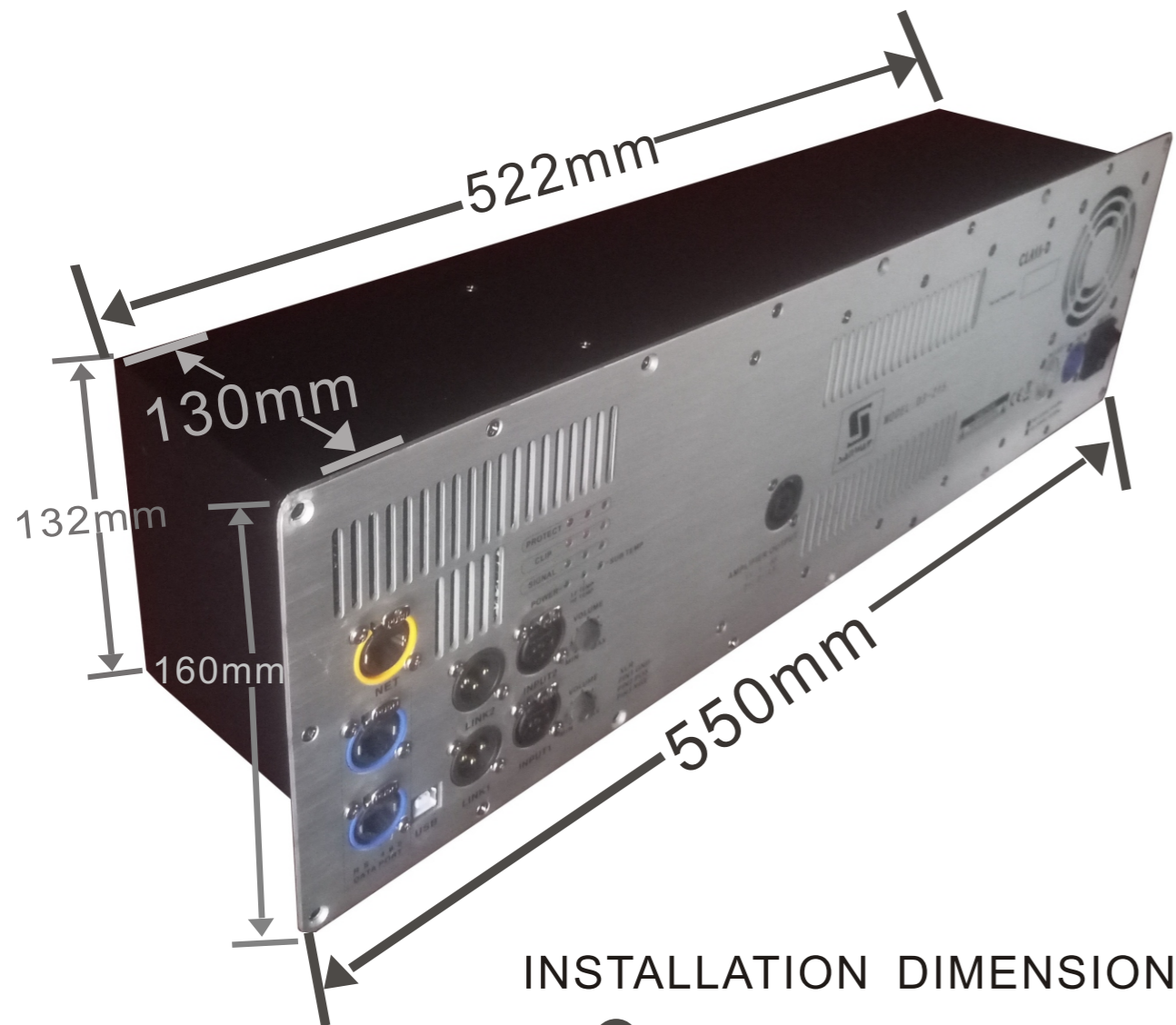
- 1.NET DATA CONTROL
- 2.485 DATA CONTROL INPUT AND OUTPUT
- 3.USB DATA CONTROL INPUT
- 4.AUDIO LINK OUTPUT CH2
- 5.AUDIO LINK OUTPUT CH1
- 6.AUDIO INPUT CH2
- 7.AUDIO INPUT CH1
- 8.VOLUME CONTROL CH2
- 9.VOLUME CONTROL CH1
- 10.LED INDICATORS
- 11.SPEAKER OUTPUT
- 12.POWER SUPPLY LINK
- 13.POWER SUPPLY INPUT
- 14.POWER SWITCH

Input and output Installation dimension

Output connections



- ① L+ OUT POSITIVE
- ② L- OUT NEGATIVE
- ③ M+ OUT POSITIVE
- ④ M- OUT NEGATIVE
- ⑤ H+ OUT POSITIVE
- ⑥ H- OUT NEGATIVE



INSTALLATION DIMENSION

PC interface

Connection type

Show or hidden Curve

Input signal indicator

Synchronized regulation

Output signal indicator

Synchronized regulation

Input parameter copy

Output parameter copy

Rename output

485 ID NUMBER

Choose