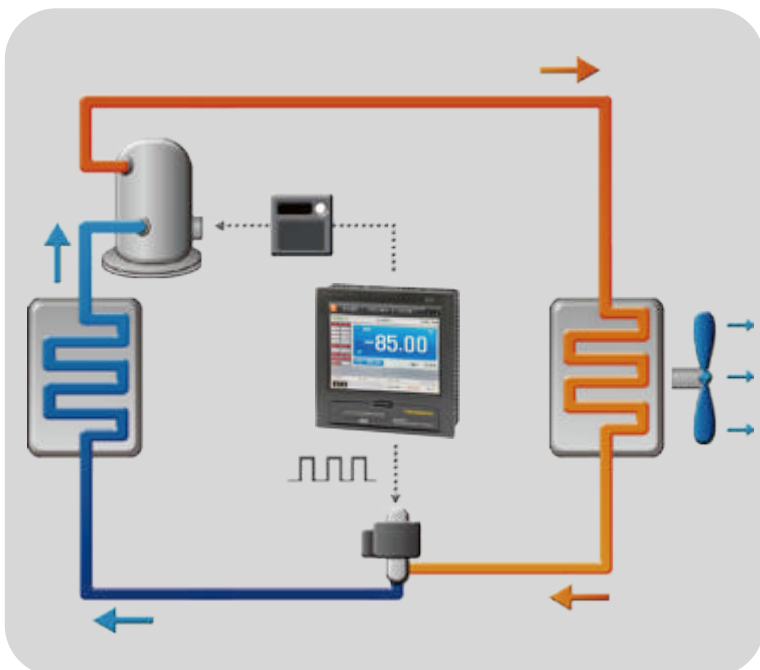


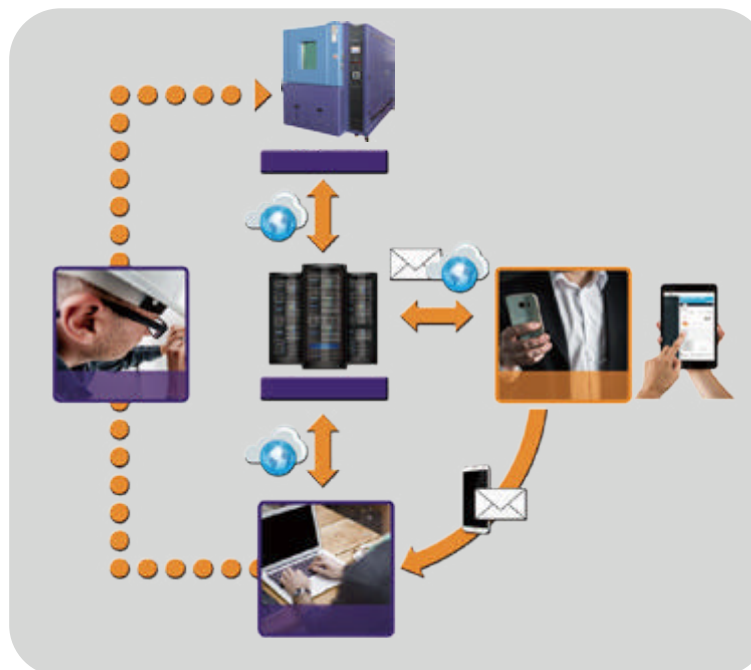
Rapid Temperature Change Chamber



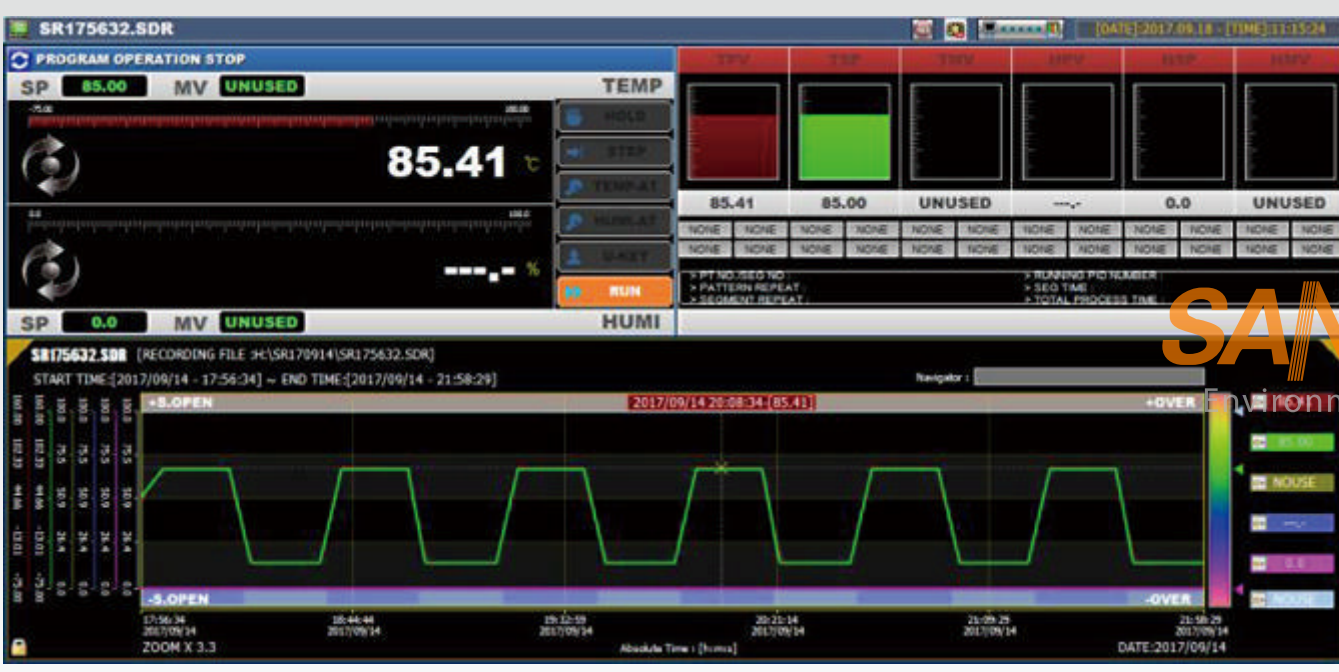
Energy Conservation



Remote network system



Circuit System



Temperature rate



Compressor

• Specifications

Model		SM-KS-225-CC	SM-KS-408-CC	SM-KS-800-CC	SM-KS-1000-CC	SM-KS-1500-CC
Temperature	Temperature control range	-70°C~180°C (A:5°C/min;B:10°C/min; C:15°C/min;D:20°C/min)				
	Temperature fluctuation	±0.5°C				
	Cooling rate	155.0°C~-55.0°C (linear or nonlinear: 5.0°C、10.0°C、15.0°C、20.0°C/min)				
	Heating rate	-55.0°C~155.0°C (linear or nonlinear: 5.0°C、10.0°C、15.0°C、20.0°C/min)				
Humidity	Temperature uniformity	±1.5°C (-40.0°C~100.0°C) ±2.0°C (100.1°C~180.0°C or -40.0°C~-70.0°C)				
	Humidity control range	20.0%RH~98.0%RH(60°C above corresponds to 20%RH)				
	Humidity fluctuation	±1.0% RH				
Material / components	Humidity uniformity	±2.0%RH				
	Internal material	Adopts 1.2mm thickness stainless steel(SUS304)				
	External material	Adopts 1.5mm thickness Cold rolled steel sheet / powder spraying				
	Heat insulating material	100mm thickness poly urethane plate+10mm thickness mineral wool				
	Fan	Centrifugal blower				
	Compressor	Semi-closed Germany Bock, Germany Bitzer				
	Condenser	Air cooling, water cooling				
	Refrigerant	R404A、R23、R508				
	Evaporator	Fin - and - Tube Heat Exchanger				
Size	Heater	Nickel chromium alloy heating wire				
	Humidifier	Steam humidifier				
Size	Interior size(mm)	500*750*600	800*850*600	1000*1000*800	1000*1000*1000	1200*1000*1250
	Volume (L)	225L	408L	800L	1000L	1500L
Operating ambient temperature		+5 ~ 35°C				
Power supply		380V AC 50/60Hz				
Controller		Standard: South Korea TEMI-2700				

Sanwood (HK) Industrial Corporation.,limited
Guangdong Sanwood Technology Corporation.,limited

ADD: No.88, Songchang Road, Songbotang , Changping, Dongguan, Guangdong
TEL: +86+769-81182799
FAX: +86+769-82987199
E-mail: info@sanwood.cc
www.sanwood.cc
www.climatic-chambers.com



Mobile phone scan
can visit our official website