

Ningbo Hyforce Hydraulic Machinery Co., Ltd

Manifolds & Manifold with Valves



Office Address: Room 15B04, Aolisai Building, No.958 Qianhu North Road, Yinzhou, Ningbo, China
Zip Code: 315100
Plant Address: No.6, Hezhou Road, Jiaochuan Street, Zhenhai, Ningbo, China
Zip Code: 315207
TEL: 0086-574-88017526; FAX: 0086-574-88017527
Website: www.hy-force.com
Email: sales@hy-force.com

Manifold Block Series

Content of Manifold Block Series	Page No.
08-2 Series Standard Manifold Blocks	L1
08-3 Series Standard Manifold Blocks	L2
08-4 Series Standard Manifold Blocks	L3
10-2 Series Standard Manifold Blocks	L4
10-3 Series Standard Manifold Blocks	L5
10-4 Series Standard Manifold Blocks	L6
12-2 Series Standard Manifold Blocks	L7
Cetop 2 Standard Flow Parallel Circuit Manifold	L8
Cetop 3 Standard Flow Parallel Circuit Manifold	L9
Cetop 3 Standard Flow Series Circuit Manifold	L10
Cetop 5 Standard Flow Parallel Circuit Manifold	L11
Cetop 5 Standard Flow Series Circuit Manifold	L12
Cetop 7 Standard Flow Parallel Circuit Manifold	L13
Cetop 8 Standard Flow Parallel Circuit Manifold	L14
Cetop 10 Standard Flow Parallel Circuit Manifold	L15
Cetop 3 Subplate	L16
Cetop 5 Subplate	L17
Cetop 7 Subplate	L18
Cetop 3 Cover Plate	L19
Cetop 5 Cover Plate	L20
LA Series Center Block for Power Unit	L21
LB Series Center Block for Power Unit	L22
LC Series Center Block for Power Unit	L23

Manifold with Valves Series

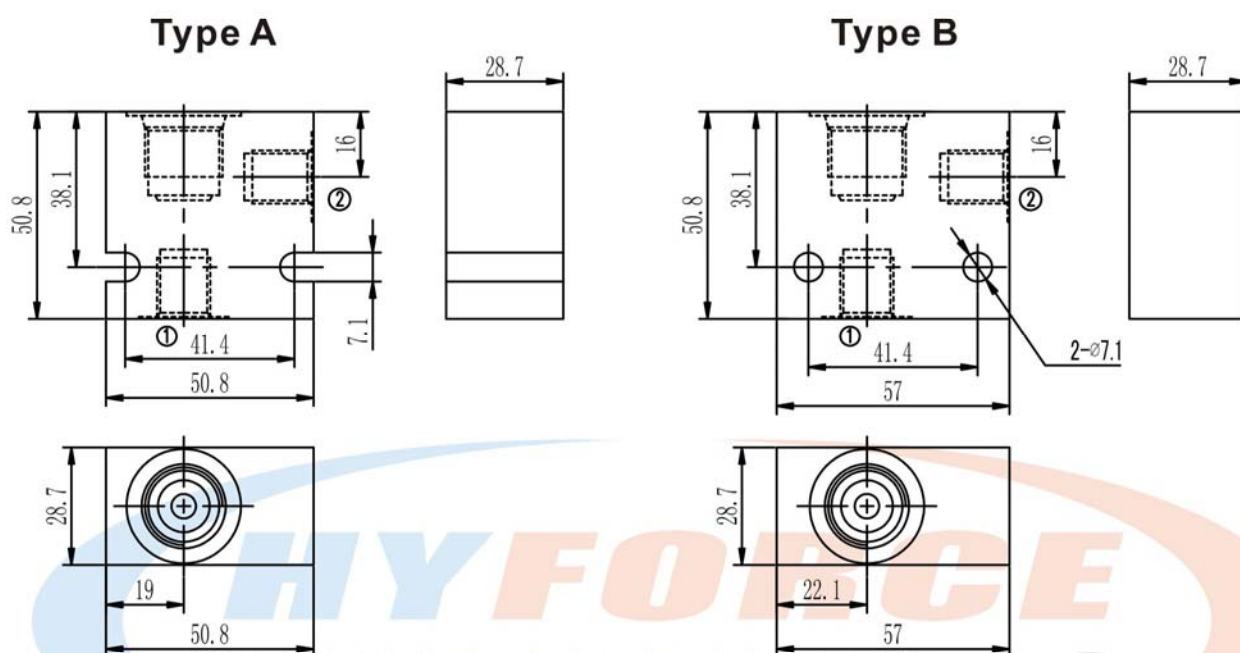
Content of Manifold with Valves Series	Page No.
ET-02 Series Thread Type Lift Valve	M1-M2
ET-04 Series Thread Type Lift Valve	M3-M4
EV-04 Series Thread Type Lift Valve	M5-M6
EF-02 Series Flange Type Lift Valve	M7-M8
HF01 Series Manifold Block System for Sweeper Truck	M9
HF02 Series Manifold Block System for Forklift	M10
HF03 Series Manifold Block System for Forklift	M11
HT01 Series Integrated Valve	M12
HT02 Series Integrated Valve	M13
HT03 Series Integrated Valve	M14
FDV06 Series Pressure Compensated Flow Regulators 3 Ways with Solenoid Control and Relief Valve	M15-M16

Manifold Block Series

08-2 Series Standard Manifold Blocks

Dimensions

Unit: mm



Technical data

Model	A08-2	B08-2
Material	Aluminum 6061-T6	
Max. working pressure (bar)	250	
Apx. weight (g)	170	190

How to order

A	08-2	6G
Product type	Cavity	Port thread & size
A: Type A B: Type B	VC08-2	4G: BSP 1/4" 6G: BSP 3/8" 4Z: NPT 1/4" 6Z: NPT 3/8" 4S: SAE 4 6S: SAE 6

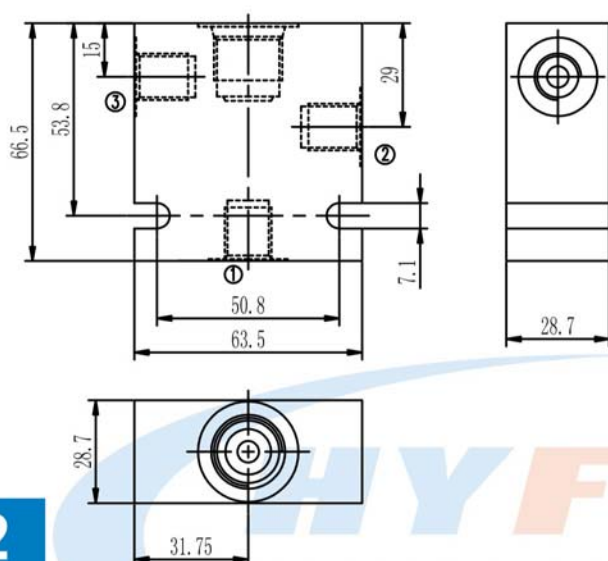
Manifold Block Series

08-3 Series Standard Manifold Blocks

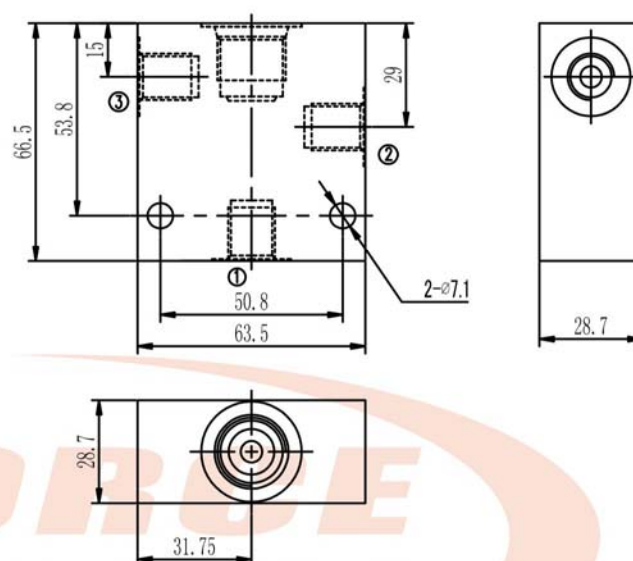
Dimensions

Unit: mm

Type A



Type B



L2

Technical data

Model	A08-3	B08-3
Material	Aluminum 6061-T6	
Max. working pressure (bar)	250	
Apx. weight (g)	290	300

How to order

A	08-3	6G
Product type	Cavity	Port thread & size
A: Type A B: Type B	VC08-3	4G: BSP 1/4" 6G: BSP 3/8" 4Z: NPT 1/4" 6Z: NPT 3/8" 4S: SAE 4 6S: SAE 6

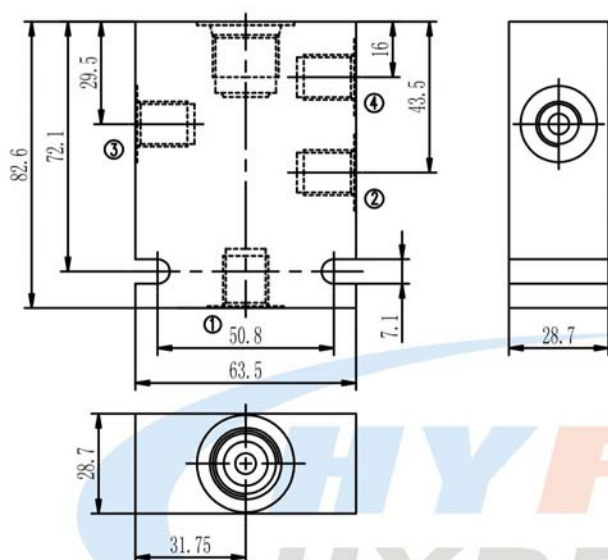
Manifold Block Series

08-4 Series Standard Manifold Blocks

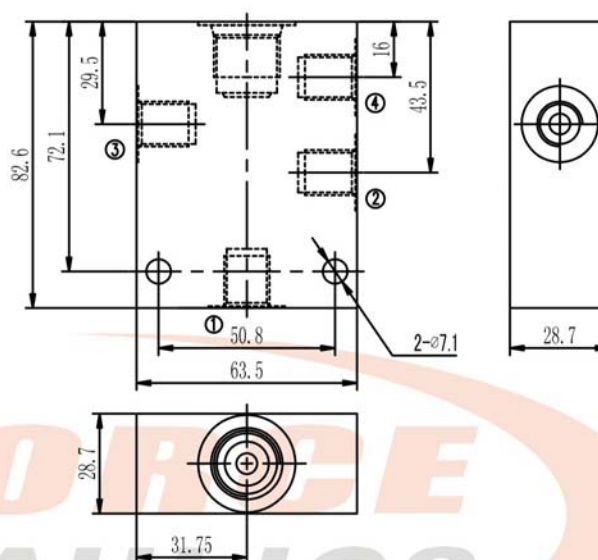
Dimensions

Unit: mm

Type A



Type B



Technical data

Model	A08-4	B08-4
Material	Aluminum 6061-T6	
Max. working pressure (bar)	250	
Apx. weight (g)	370	380

How to order

A	08-4	6G
Product type	Cavity	Port thread & size
A: Type A B: Type B	VC08-4	4G: BSP 1/4" 6G: BSP 3/8" 4Z: NPT 1/4" 6Z: NPT 3/8" 4S: SAE 4 6S: SAE 6

A

B

C

D

E

F

G

H

I

J

K

L3

M

N

O

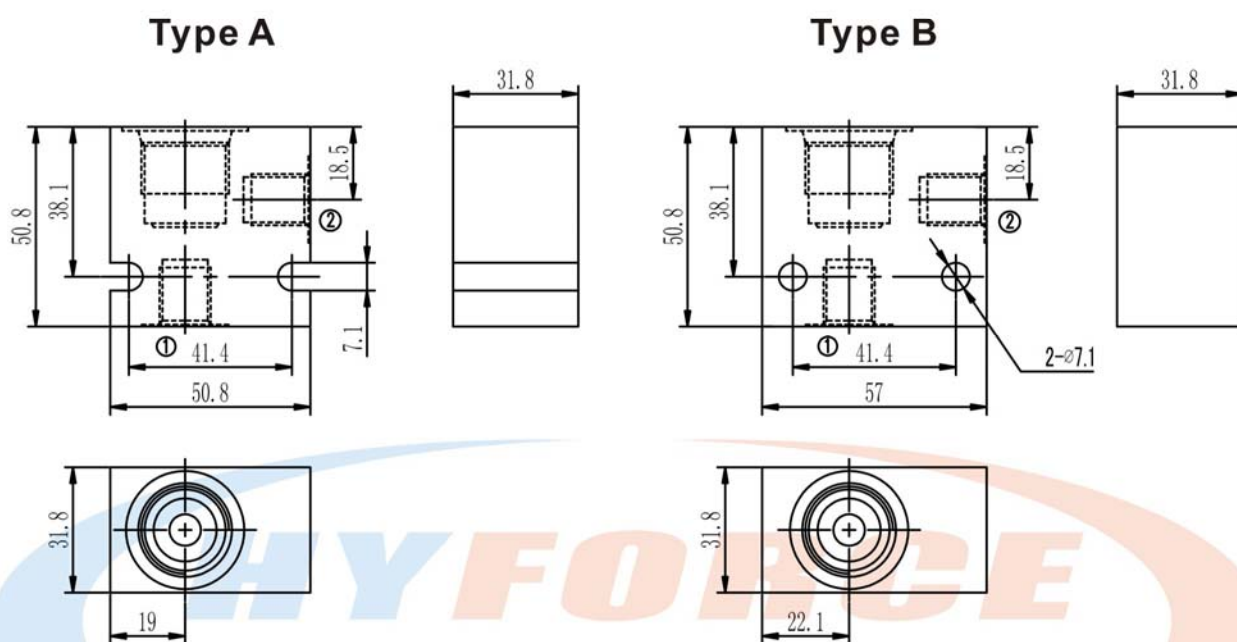
P

Manifold Block Series

10-2 Series Standard Manifold Blocks

Dimensions

Unit: mm



L4

Technical data

Model	A10-2	B10-2
Material	Aluminum 6061-T6	
Max. working pressure (bar)	250	
Apx. weight (g)	180	200

How to order

A	10-2	8G
Product type	Cavity	Port thread & size
A: Type A B: Type B	VC10-2	6G: BSP 3/8" 8G: BSP 1/2" 6Z: NPT 3/8" 8Z: NPT 1/2" 6S: SAE 6 8S: SAE 8

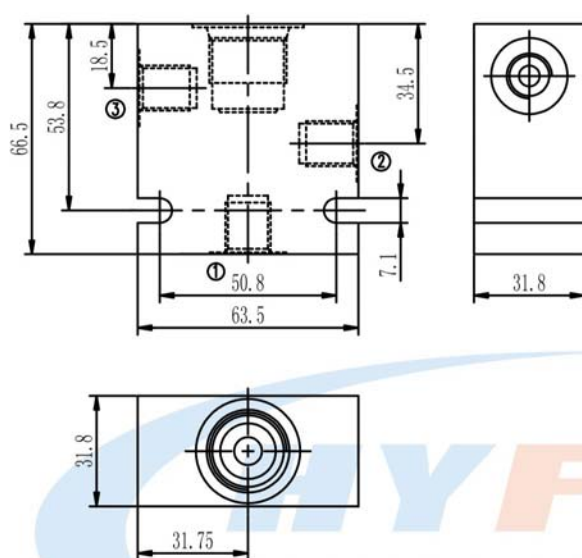
Manifold Block Series

10-3 Series Standard Manifold Blocks

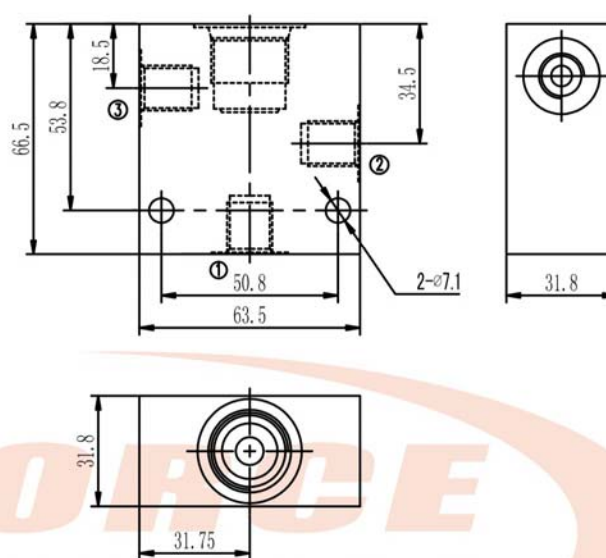
Dimensions

Unit: mm

Type A



Type B



Technical data

Model	A10-3	B10-3
Material	Aluminum 6061-T6	
Max. working pressure (bar)	250	
Apx. weight (g)	320	330

How to order

A	10-3	8G
Product type	Cavity	Port thread & size
A: Type A B: Type B	VC10-3	6G: BSP 3/8" 8G: BSP 1/2" 6Z: NPT 3/8" 8Z: NPT 1/2" 6S: SAE 6 8S: SAE 8

Manifold Block Series

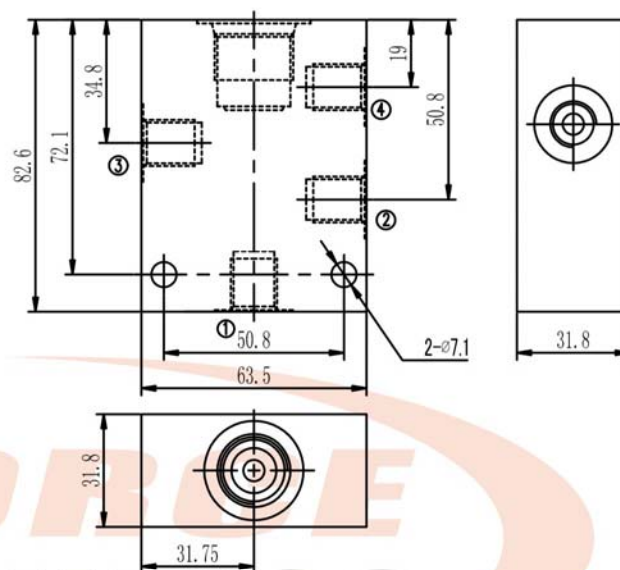
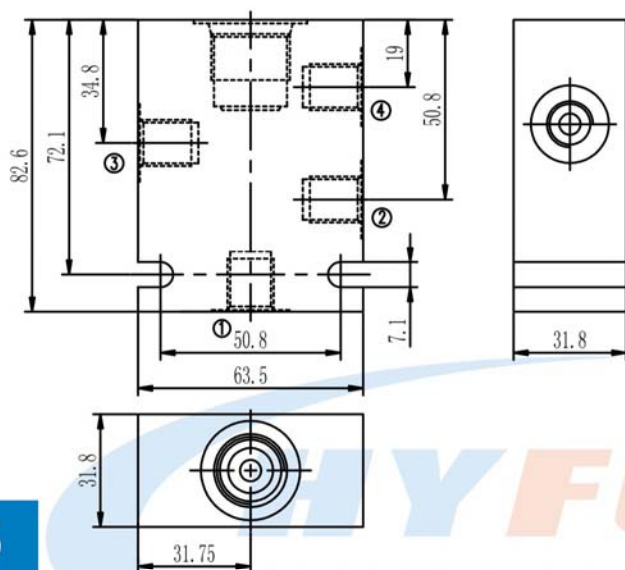
10-4 Series Standard Manifold Blocks

Dimensions

Unit: mm

Type A

Type B



L6

Technical data

Model	A10-4	B10-4
Material	Aluminum 6061-T6	
Max. working pressure (bar)	250	
Apx. weight (g)	410	420

How to order

A	10-4	8G
Product type	Cavity	Port thread & size
A: Type A B: Type B	VC10-4	6G: BSP 3/8" 8G: BSP 1/2" 6Z: NPT 3/8" 8Z: NPT 1/2" 6S: SAE 6 8S: SAE 8

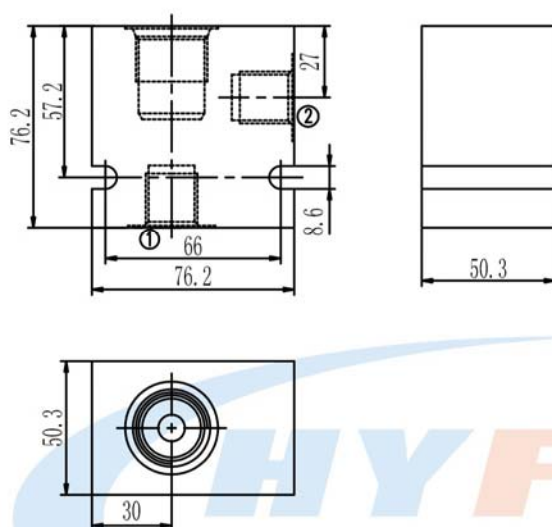
Manifold Block Series

12-2 Series Standard Manifold Blocks

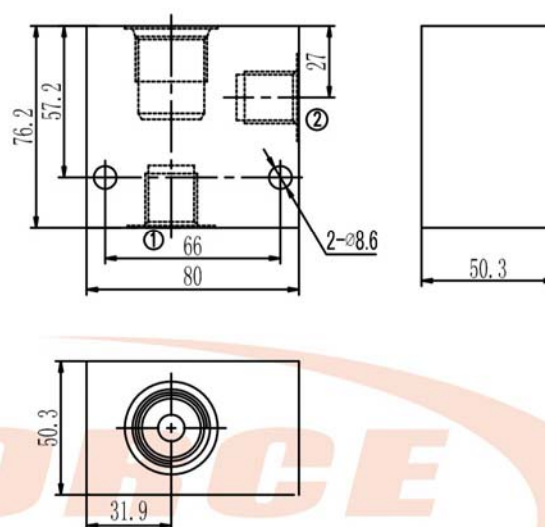
Dimensions

Unit: mm

Type A



Type B



Technical data

Model	A12-2	B12-2
Material	Aluminum 6061-T6	
Max. working pressure (bar)	250	
Apx. weight (g)	740	780

How to order

A	12-2	12G
Product type	Cavity	Port thread & size
A: Type A B: Type B	VC12-2	8G: BSP 1/2" 12G: BSP 3/4" 8Z: NPT 1/2" 12Z: NPT 3/4" 8S: SAE 8 12S: SAE 12

A

B

C

D

E

F

G

H

I

J

K

L7

M

N

O

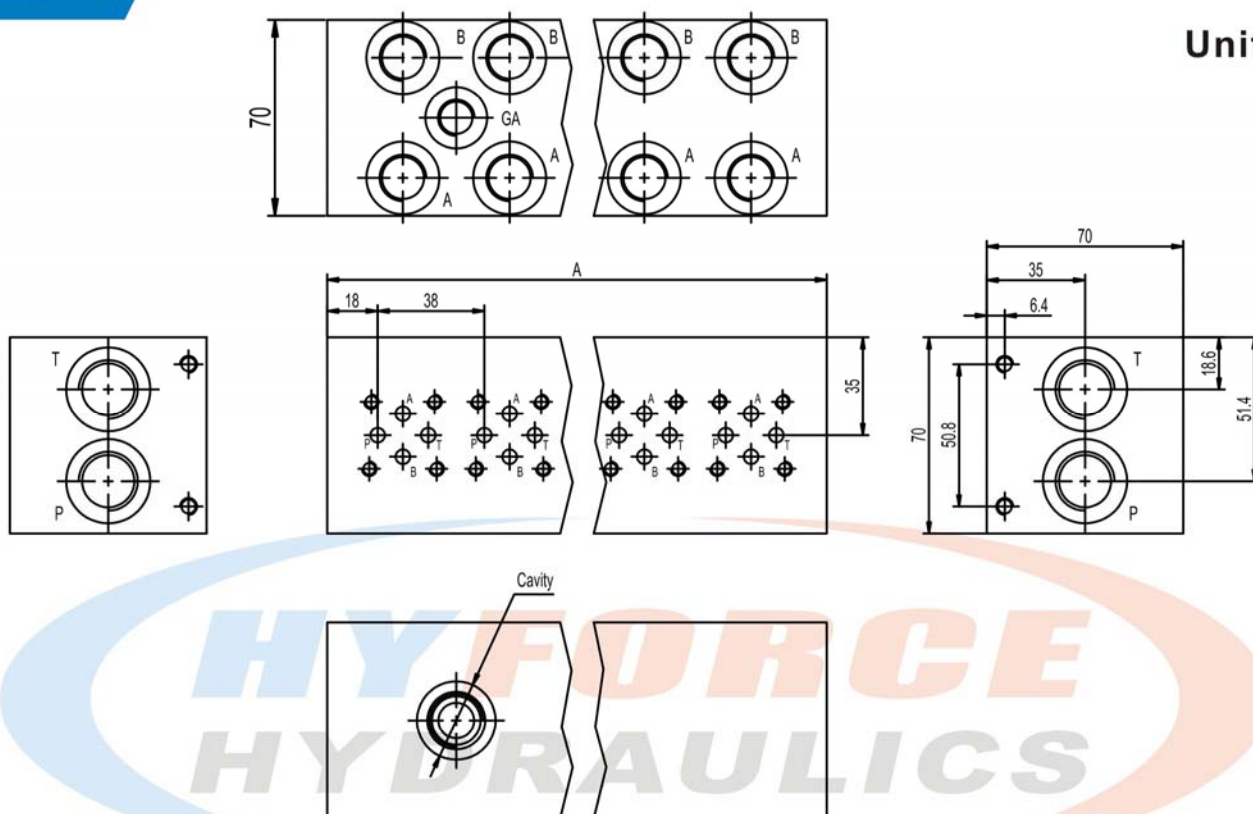
P

Manifold Block Series

Cetop 2 Standard Flow Parallel Circuit Manifold

Dimensions

Unit: mm



L8

No. of stations	*1	2	3	4	5	6	7	8	9	10
"A" length (mm)	54	92.1	130.2	168.3	206.4	244.5	282.6	320.7	358.8	396.9
Apx. weight-aluminum (kgs)	0.65	1.11	1.57	2.03	2.49	2.95	3.41	3.87	4.33	4.79
Apx. weight-steel (kgs)	1.82	3.11	4.4	5.69	6.98	8.27	9.56	10.85	12.14	13.43

Remark: Length of 1 station with relief cavity is 79mm. Gauge port is not available on 1 station.

How to order

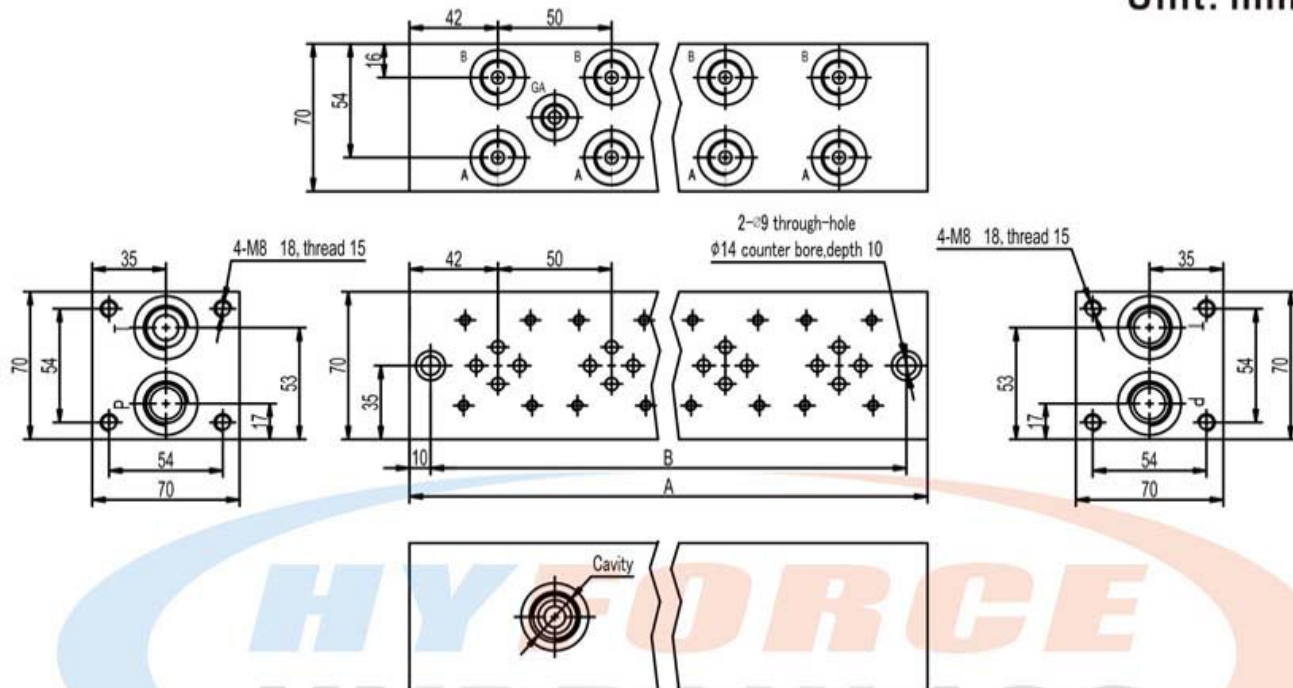
D	02	P	2	G				C
Material	Size	Circuit	No. of stations	Port thread	P & T	A & B	GA	Relief cavity
A: Aluminum D: Forged steel	NG4	Parallel circuit standard flow	1, 2, ... 10	G: BSP Z: NPT S: SAE M: ISO	1/2" 1/2" 8 M18	3/8" 3/8" 6 M14	1/4" 1/4" 6 None	No code: Without cavity C: With custom cavity

Manifold Block Series

Cetop 3 Standard Flow Parallel Circuit Manifold

Dimensions

Unit: mm



No. of stations	*1	2	3	4	5	6	7	8	9	10
"A" length (mm)	84	134	184	234	284	334	384	434	484	534
"B" length (mm)	64	114	164	214	264	314	364	414	464	514
Apx. weight-aluminum (kgs)	1.01	1.62	2.23	2.84	3.45	4.06	4.67	5.28	5.89	6.5
Apx. weight-steel (kgs)	2.84	2.84	2.84	2.84	2.84	2.84	2.84	2.84	2.84	2.84

Remark: Gauge port is not available on 1 station.

How to order

D	03	P	2	G				C
Material	Size	Circuit	No. of stations	Port thread	P & T	A & B	GA	Relief cavity
A: Aluminum D: Forged steel	NG6	Parallel circuit standard flow	1, 2, ... 10	G: BSP Z: NPT S: SAE M: ISO	1/2" 1/2" 10 M22	3/8" 3/8" 8 M18	1/4" 1/4" 6 None	No code: Without cavity C: With custom cavity

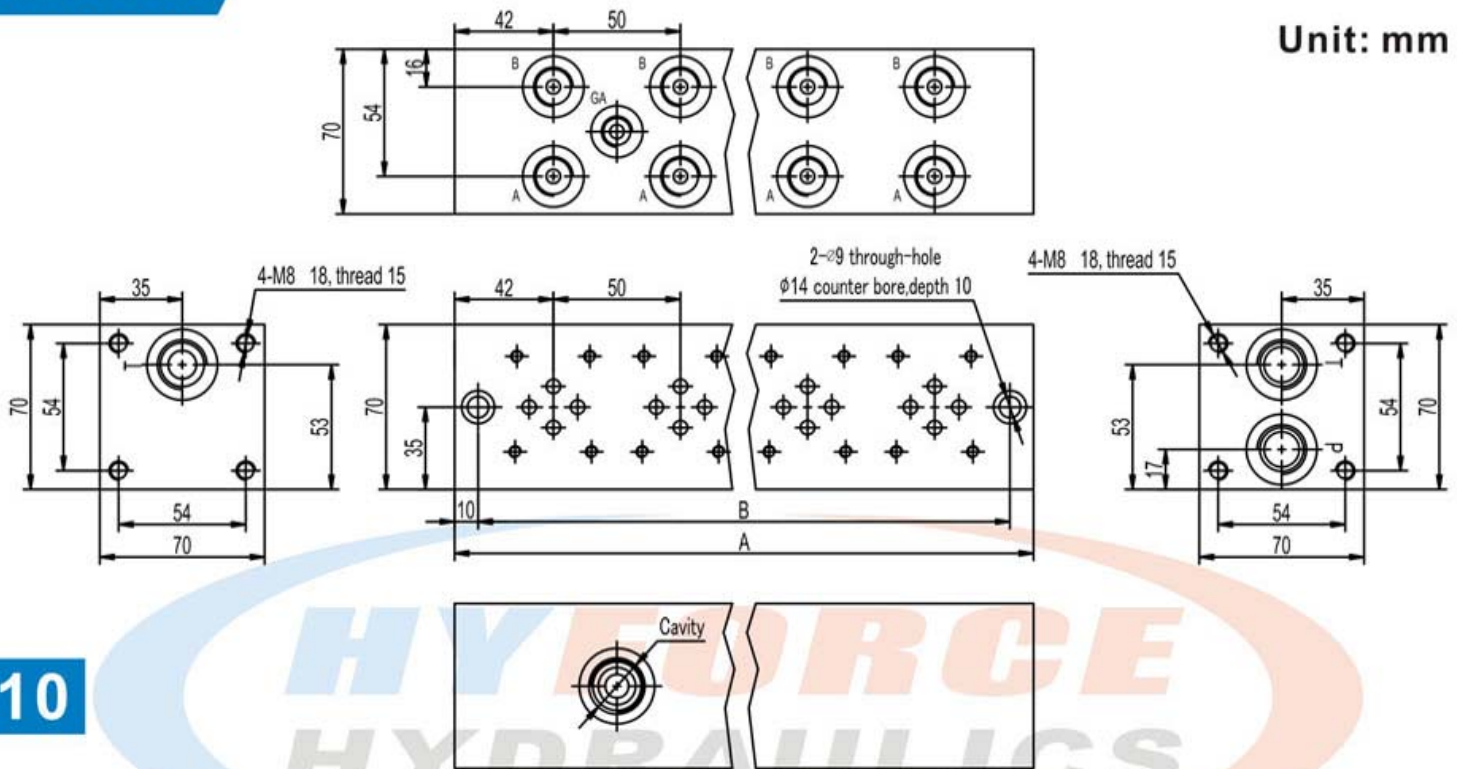


Manifold Block Series

Cetop 3 Standard Flow Series Circuit Manifold

Dimensions

Unit: mm



No. of stations	2	3	4	5	6	7	8	9	10
"A" length (mm)	134	184	234	284	334	384	434	484	534
"B" length (mm)	114	164	214	264	314	364	414	464	514
Apx. weight-aluminum (kgs)	1.62	2.23	2.84	3.45	4.06	4.67	5.28	5.89	6.5
Apx. weight-steel (kgs)	2.84	2.84	2.84	2.84	2.84	2.84	2.84	2.84	2.84

How to order

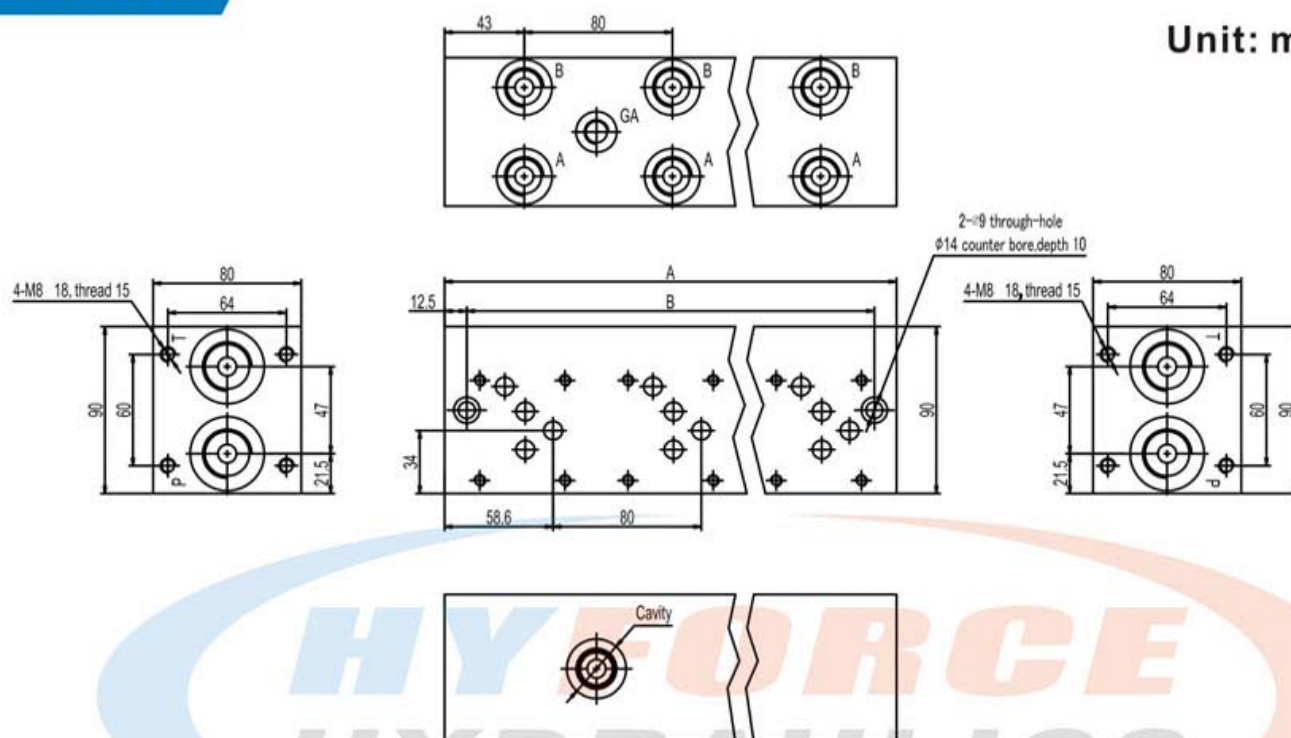
D	03	S	2	G				C
Material	Size	Circuit	No. of stations	Port thread	P & T	A & B	GA	Relief cavity
A: Aluminum D: Forged steel	NG6	Series circuit standard flow	2, 3, 4	G: BSP Z: NPT S: SAE M: ISO	1/2" 1/2" 10 M22	3/8" 3/8" 8 M18	1/4" 1/4" 6 None	No code: Without cavity C: With custom cavity

Manifold Block Series

Cetop 5 Standard Flow Parallel Circuit Manifold

Dimensions

Unit: mm



No. of stations	*1	2	3	4	5	6	7	8	9	10
"A" length (mm)	86	166	246	326	406	486	566	646	726	806
"B" length (mm)	61	141	221	301	381	461	541	621	701	781
Apx. weight-aluminum (kgs)	1.72	3.31	4.9	6.49	8.08	9.67	11.26	12.85	14.44	16.03
Apx. weight-steel (kgs)	4.81	9.28	13.75	18.22	22.69	27.16	31.63	36.1	40.57	45.04

Remark: Length of 1 station with relief cavity is 110mm, gauge port is not available on 1 station.

How to order

D	05	P	2	G				C
Material	Size	Circuit	No. of stations	Port thread	P & T	A & B	GA	Relief cavity
A: Aluminum D: Forged steel	NG10	Parallel circuit standard flow	1, 2, ... 10	G: BSP Z: NPT S: SAE M: ISO	3/4" 3/4" 12 M27	1/2" 1/2" 8 M18	1/4" 1/4" 6 None	No code: Without cavity C: With custom cavity

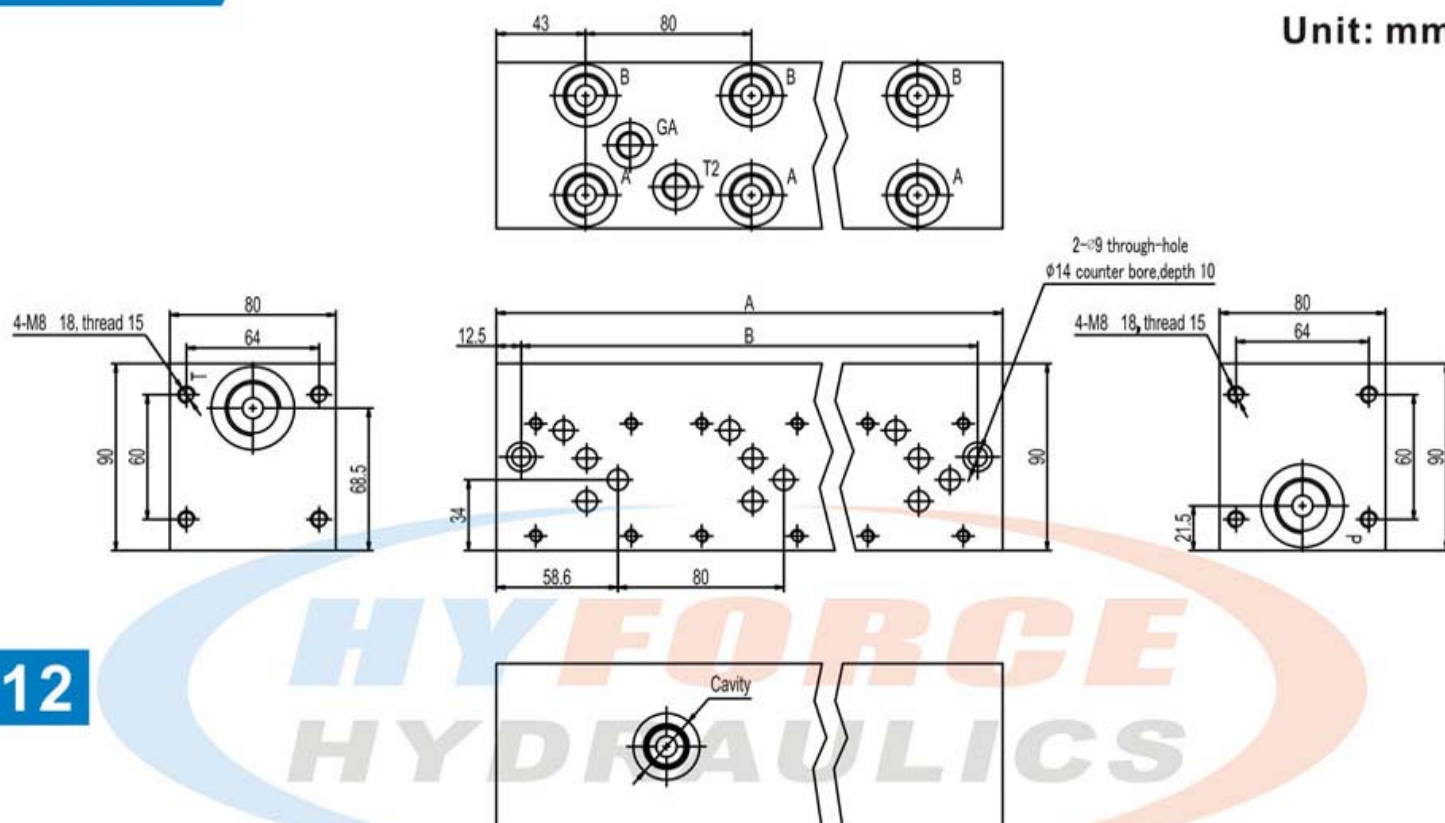


Manifold Block Series

Cetop 5 Standard Flow Series Circuit Manifold

Dimensions

Unit: mm



L12

No. of stations	2	3	4	5	6	7	8	9	10
"A" length (mm)	166	246	326	406	486	566	646	726	806
"B" length (mm)	141	221	301	381	461	541	621	701	781
Apx. weight-aluminum (kgs)	3.31	4.9	6.49	8.08	9.67	11.26	12.85	14.44	16.03
Apx. weight-steel (kgs)	9.28	13.75	18.22	22.69	27.16	31.63	36.1	40.57	45.04

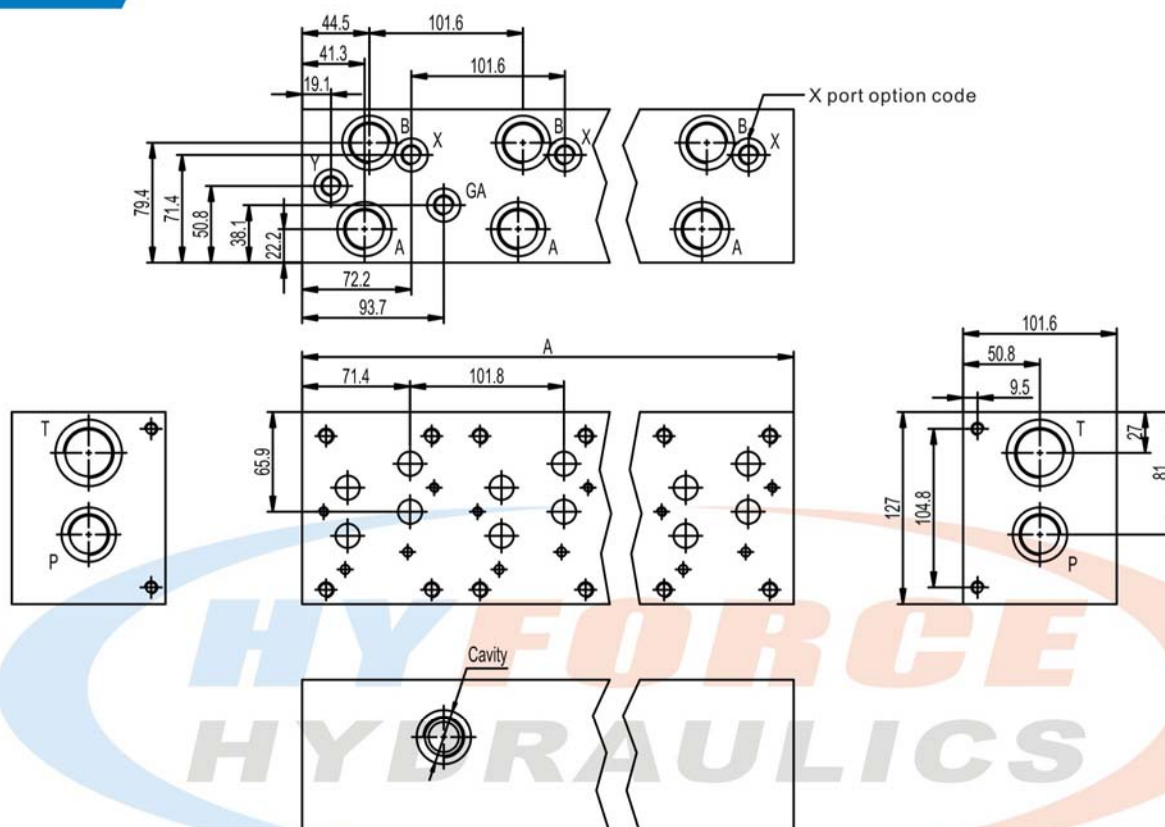
How to order

D	05	S	2	G				C
Material	Size	Circuit	No. of stations	Port thread	P & T	A & B	GA	Relief cavity
A: Aluminum D: Forged steel	NG10	Series circuit standard flow	2, 3, 4	G: BSP Z: NPT S: SAE M: ISO	3/4" 3/4" 12 M27	1/2" 1/2" 8 M18	1/4" 1/4" 6 None	No code: Without cavity C: With custom cavity

Manifold Block Series

Cetop 7 Standard Flow Parallel Circuit Manifold

Dimensions



No. of stations	*1	2	3	4	5	6	7	8	9	10
"A" length (mm)	101.6	203.2	304.8	406.4	508	609.6	711.2	812.8	914.4	1016
Apx. weight-aluminum (kgs)	4.24	8.48	12.72	16.96	21.2	25.44	29.68	33.92	38.16	42.4
Apx. weight-steel (kgs)	9.07	18.14	27.21	36.28	45.35	54.42	63.49	72.56	81.63	90.7

Remark: Length of 1 station with relief cavity is 140mm. Gauge port is not available on 1 station.

How to order

D	07	P	2	G					X		C
Material	Size	Circuit	No. of stations	Port thread	P, A, B	T	Y	GA	X port option		Relief cavity
A: Aluminum D: Forged steel	NG16	Parallel circuit standard flow	1, 2, ... 8	G: BSP Z: NPT S: SAE M: ISO	3/4" 3/4" 12 M27	1" 1" 16 M33	3/8" 3/8" 6 M14	1/4" 1/4" 6 None	1/4" 1/4" 4 M10	No code: Without X port	No code: Without cavity C: With custom cavity

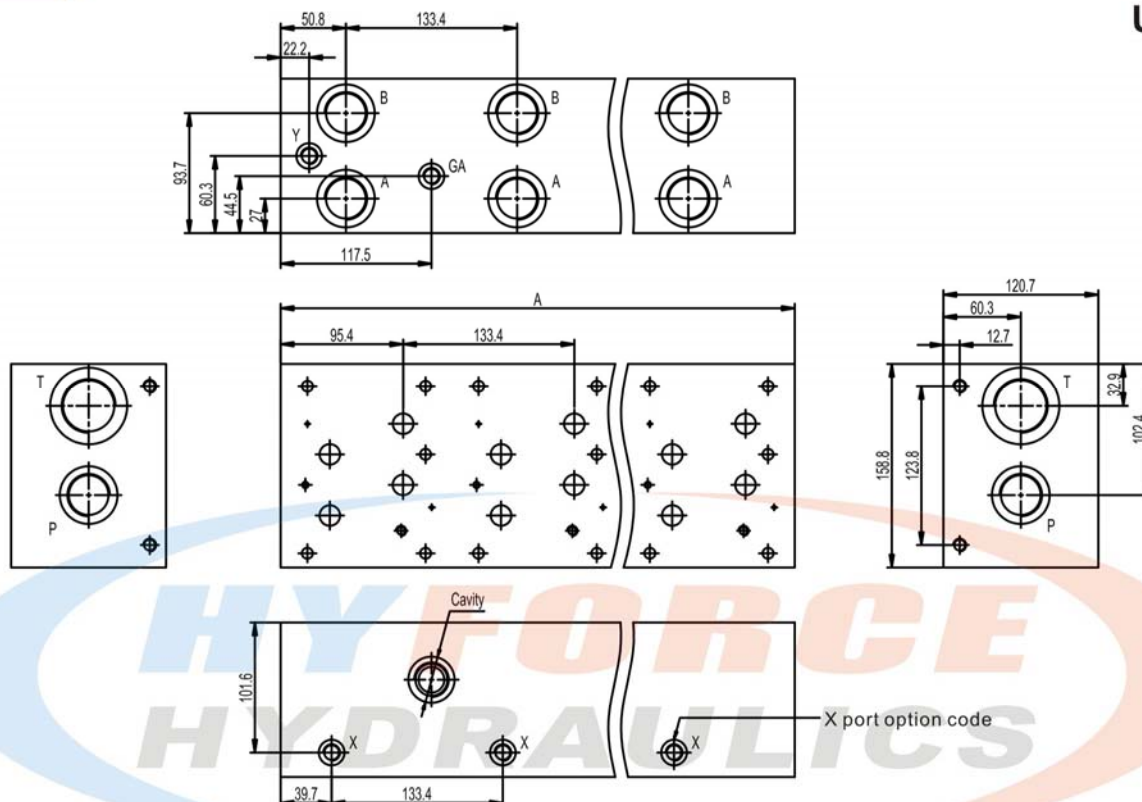


Manifold Block Series

Cetop 8 Standard Flow Parallel Circuit Manifold

Dimensions

Unit: mm



No. of stations	*1	2	3	4	5	6	7
"A" length (mm)	133.4	266.7	400.1	533.4	666.8	800.1	933.5
Apx. weight-aluminum (kgs)	6.26	12.56	18.86	25.16	31.46	37.76	44.06
Apx. weight-steel (kgs)	17.59	35.17	52.75	70.33	87.91	105.49	123.07

Remark: Gauge port is not available on 1 station.

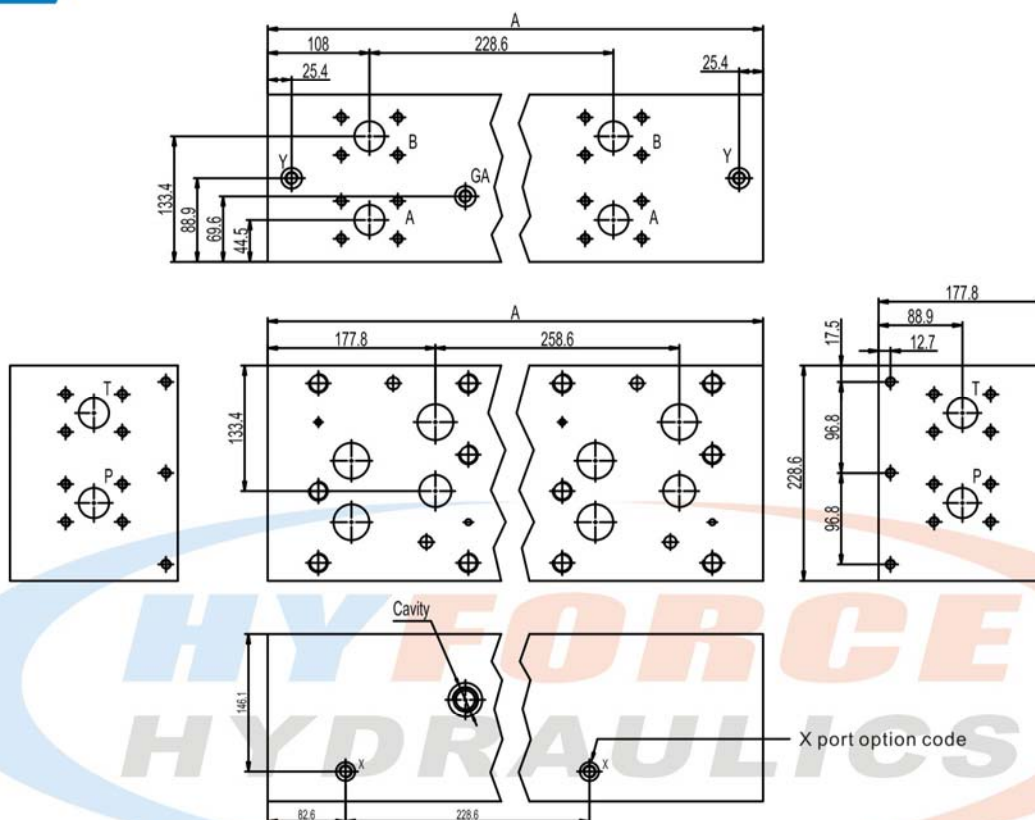
How to order

D	08	P	2	G					X		C
Material	Size	Circuit	No. of stations	Port thread	P, A, B	T	Y	GA	X port option		Relief cavity
A: Aluminum D: Forged steel	NG25	Parallel circuit standard flow	1, 2, ... 7	G: BSP Z: NPT S: SAE M: ISO	1" 1" 16 M33	1 1/4" 1 1/4" 20 M42	3/8" 3/8" 8 M14	1/4" 1/4" 6 None	1/4" 1/4" 4 M10	No code: Without X port	No code: Without cavity C: With custom cavity

Manifold Block Series

Cetop 10 Standard Flow Parallel Circuit Manifold

Dimensions



No. of stations	*1	2	3	4	5
"A" length (mm)	254	482.6	711.2	939.8	1168.4
Apx. weight-aluminum (kgs)	25.5	48.5	71.5	94.5	117.5
Apx. weight-steel (kgs)	71.4	135.6	199.8	264	328.2

Remark: Gauge port is not available on 1 station.

How to order

D	10	P	2	F					X		C
Material	Size	Circuit	No. of stations	Flange	P, A, B	T	Y	GA	X port option		Relief cavity
A: Aluminum D: Forged steel	NG32	Parallel circuit standard flow	1, 2, ... 4	F F/M	1 1/2" C.61	2" C.61	SAE-8 M16	SAE-6 None	SAE-6 M14	No code: Without X port	No code: Without cavity C: With custom cavity

Manifold Block Series

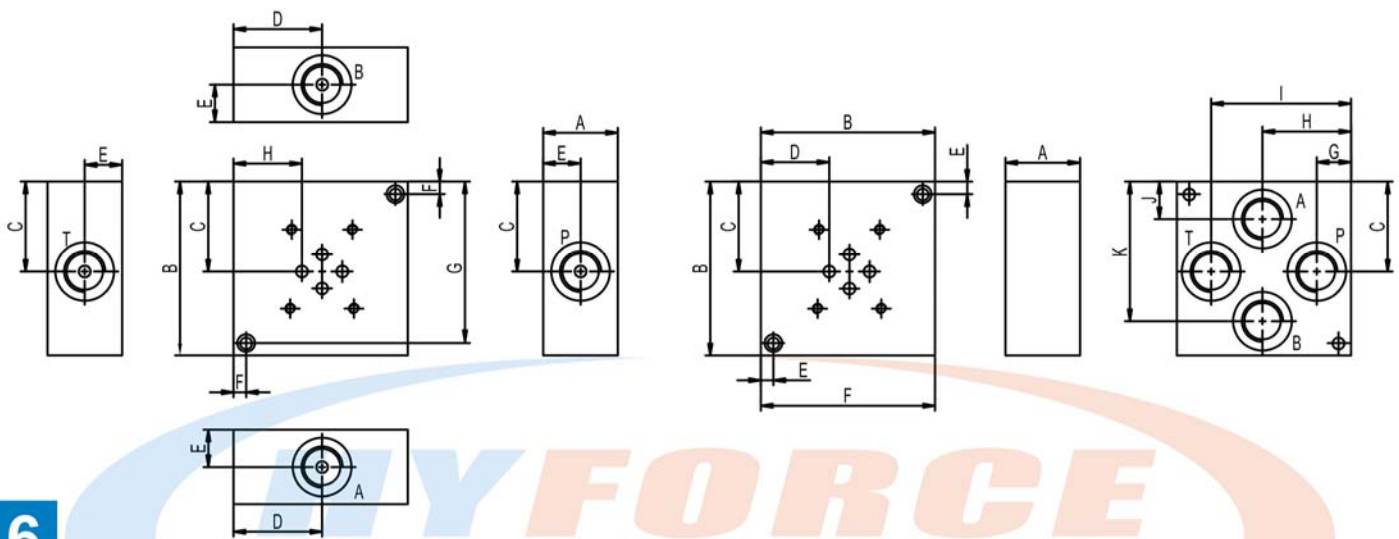
Cetop 3 Subplate

Dimensions

Unit: mm

Side ported

Back ported



L16

Dimension	A	B	C	D	E	F	G	H
03SPS6	25.4	63.5	33.3	31.8	12.7	6.4	57.2	22.4
03SPS8	38.1	88.9	46	45.2	19.1	6.4	82.6	34.9
03SPS12	44.5	102	52.4	51.6	22.2	9.5	92.1	41.3

Dimension	A	B	C	D	E	F	G	H	I	J	K
*03SPB6G	25.4	63.5	31.8	21.4	6.4	57.2	13	31.8	50.4	13.2	50
*03SPB6(Z,S,M)	25.4	63.5	33.3	22.4	6.4	57.2	15.1	32.5	50	17.5	49.2
03SPB8	38.1	88.9	46	34.9	6.4	82.6	17.5	45.2	71.4	19.1	71.4
03SPB12	38.1	114	58.8	47.6	9.5	105	23.8	57.9	90.5	23.8	90.5

How to order

D	03	SP	S	6G		
Material	Size	Product type	Port location	Port thread & size		
A: Aluminum D: Forged steel	NG6	Subplate	S: Side ported B: Back ported	6G: BSP 3/8" 6Z: NPT 3/8" 6S: SAE 6 6M: ISO M14	8G: BSP 1/2" 8Z: NPT 1/2" 8S: SAE 8 8M: ISO M18	12G: BSP 3/4" 12Z: NPT 3/4" 12S: SAE 12 12M: ISO M27

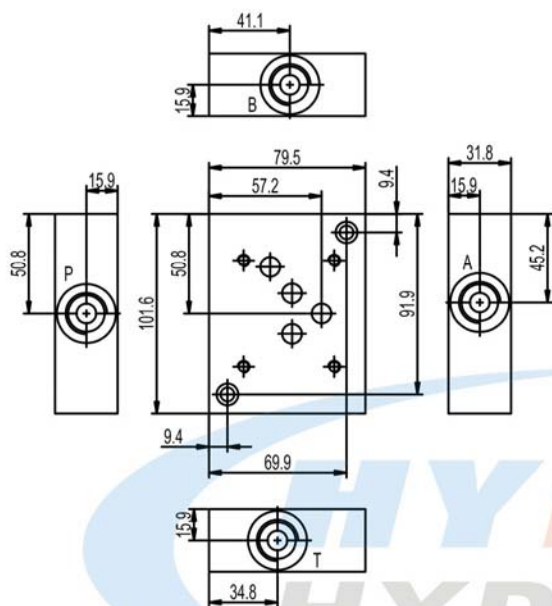
Manifold Block Series

Cetop 5 Subplate

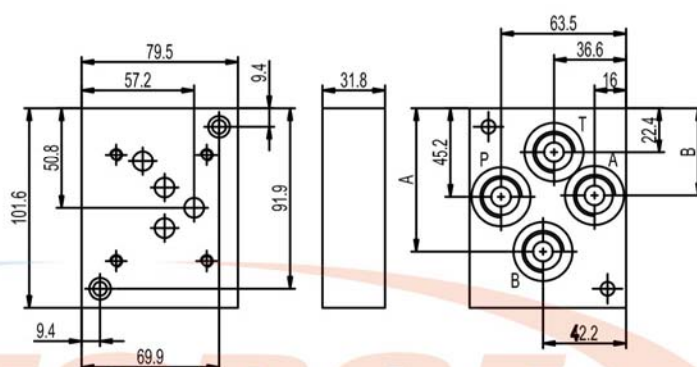
Dimensions

Unit: mm

Side ported



Back ported



Dimension	A	B
*05SPSB8G	74.6	50.8
*05SPSB8(Z,S,M)	66.8	44.5

How to order

D	05	SP	S	8G
Material	Size	Product type	Port location	Port thread & size
A: Aluminum D: Forged steel	NG10	Subplate	S: Side ported B: Back ported	8G: BSP 1/2" 8Z: NPT 1/2" 8S: SAE 8 8M: ISO M18

A

B

C

D

E

F

G

H

I

J

K

L17

M

N

O

P

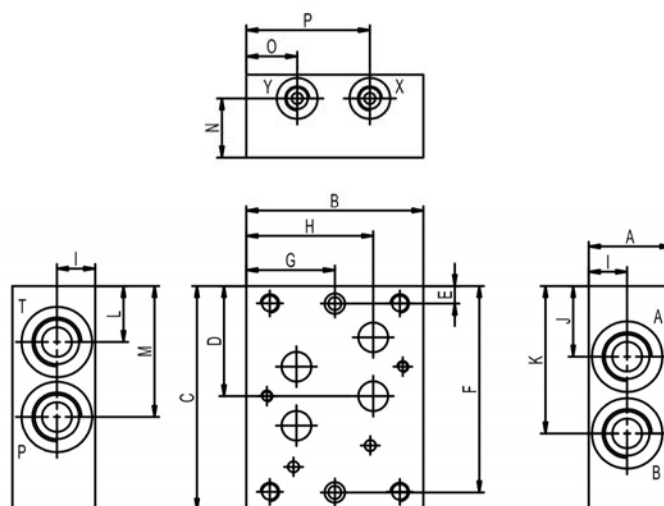
Manifold Block Series

Cetop 7 Subplate

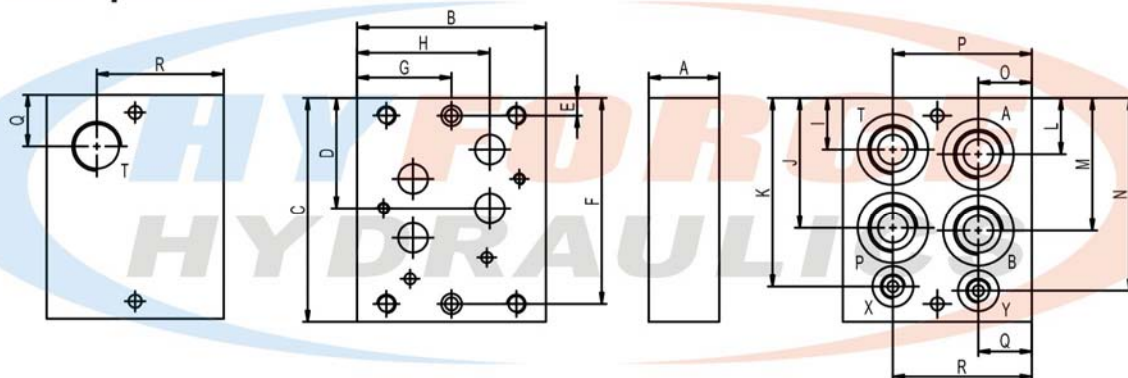
Dimensions

Side ported

Unit: mm



Back ported



Dimension	A	B	C	D	E	F	G	H	I	J	K	L	M	N	O	P	Q	R
07SPSO12	44.5	95.3	121	59.4	9.5	111	47.8	68.3	20.6	38.1	79.5	30.2	70.6	31.8	28.4	66.5	—	—
07SPST12	44.5	95.3	121	59.4	9.5	111	47.8	68.3	20.6	38.1	79.5	—	70.6	31.8	28.4	66.5	27.7	68.3
07SPSO16	76.2	127	140	75.4	12.7	127	63.5	84.2	29.5	46	105	30.2	88.9	60.3	44.5	82.6	—	—
*07SPB12G	38.1	102	121	59.4	9.5	111	50.8	71.4	27.7	69.9	102	30.2	71.4	104	28.7	74.7	28.7	74.7
*07SPB12(Z,S,M)	38.1	102	121	59.4	9.5	111	50.8	71.4	27.7	71.4	102	31.8	73.9	104	28.7	74.7	28.7	74.7
07SPB16	69.9	127	152	75.4	12.7	140	63.5	84.2	31.8	88.9	135	34.9	92.1	135	34.9	92.1	41.3	87.3

How to order

D	07	SP	SO	12G
Material	Size	Product type	Port Location	Port Thread & Size
A: Aluminum D: Forged steel	NG16	Subplate	SO: Side ported ST: Side P, A, B ports back T port (for 12Z & 12S only) B: Back ported	12G: BSP 3/4" 12Z: NPT 3/4" 12S: SAE 12 12M: ISO M27 16G: BSP 1" 16Z: NPT 1" 16S: SAE-16 16M: ISO M33

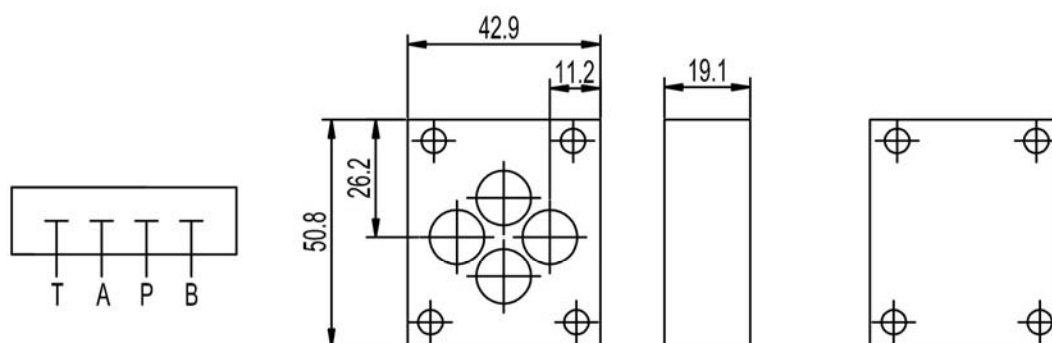
Manifold Block Series

Cetop 3 Cover Plate

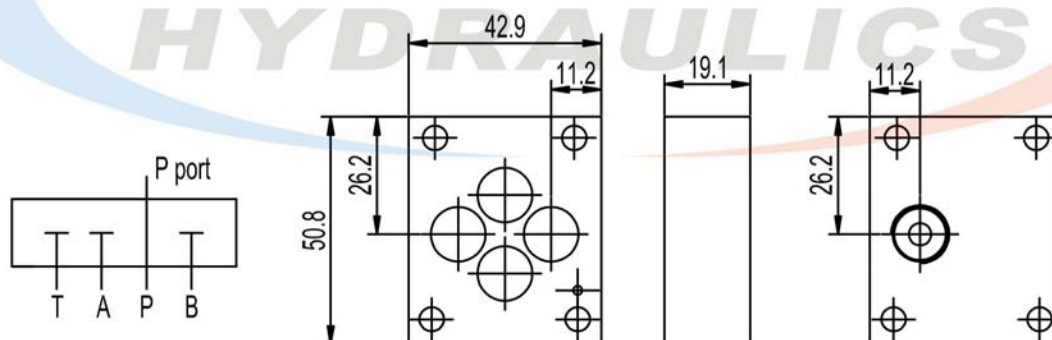
Dimensions

Unit: mm

Standard cover plate



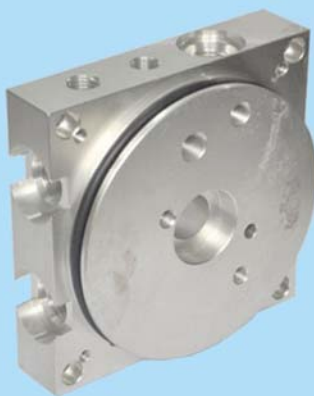
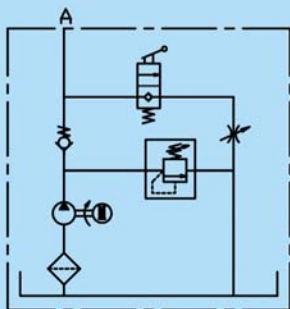
Cover plate with gauge port



How to order

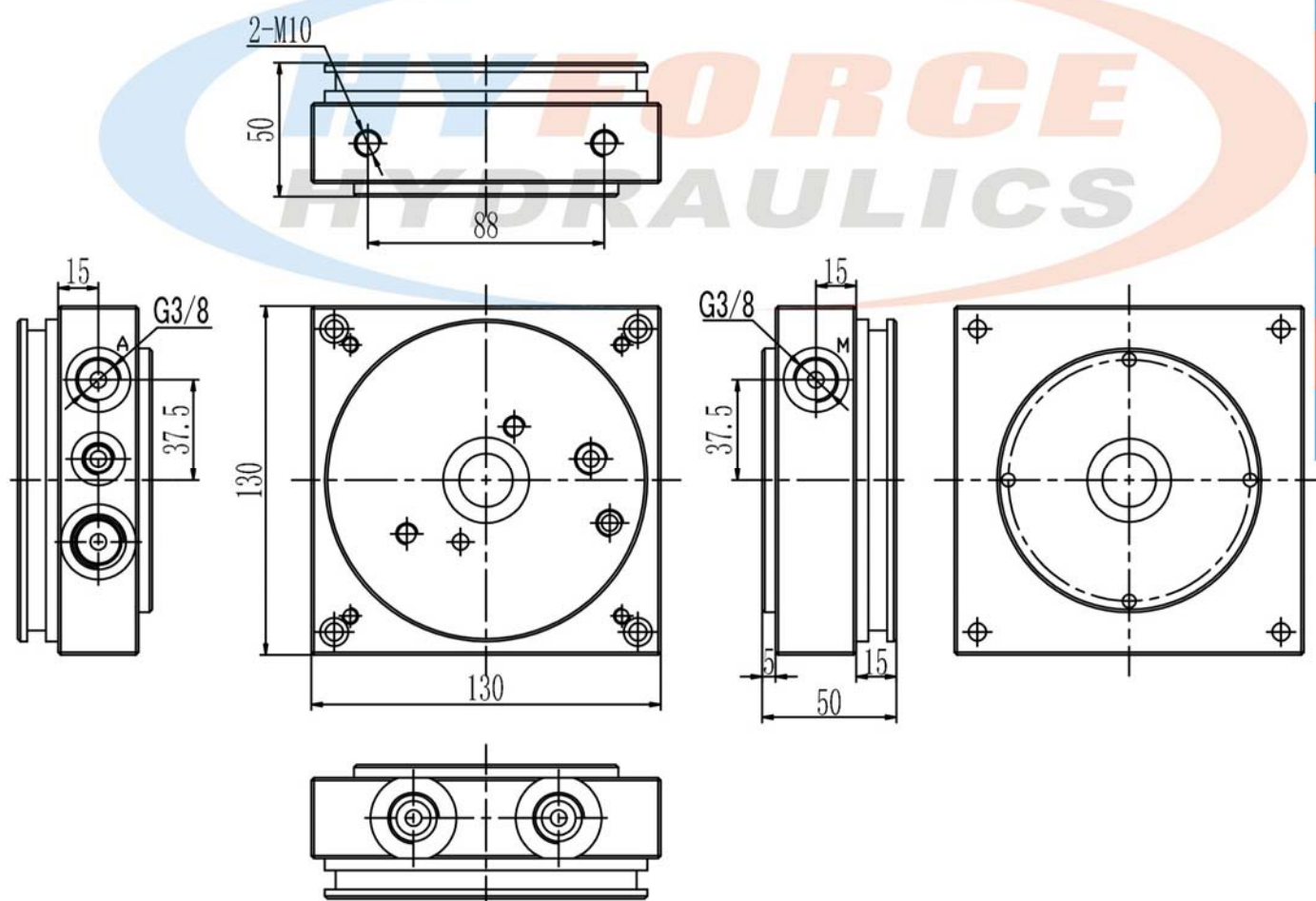
D	03	CP	G
Material	Size	Product type	Gauge port
A: Aluminum D: Forged steel	NG6	Cover plate	No code: Without gauge port G: BSP 1/8" Z: NPT 1/8"

Symbol



Dimensions

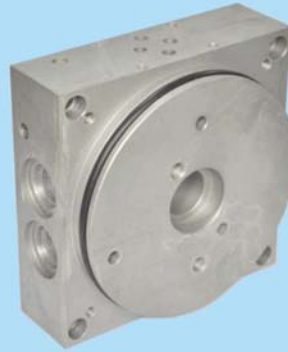
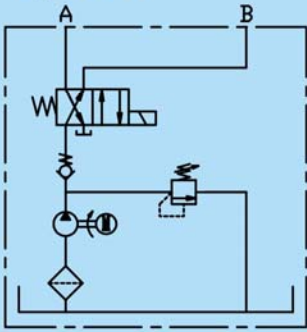
Unit: mm



Manifold Block Series

LB Series Center Block for Power Unit

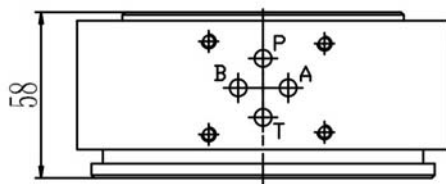
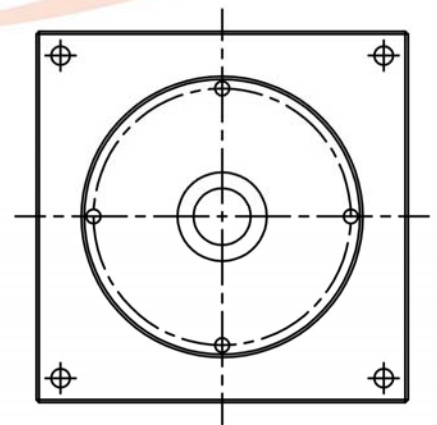
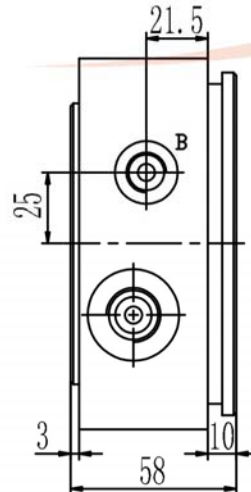
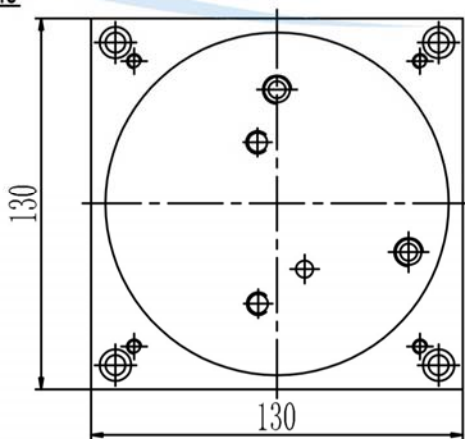
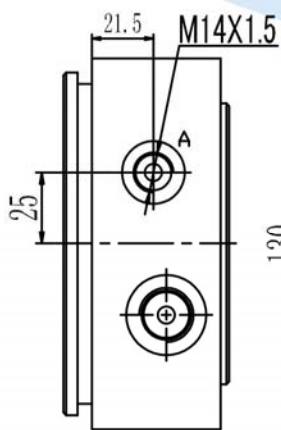
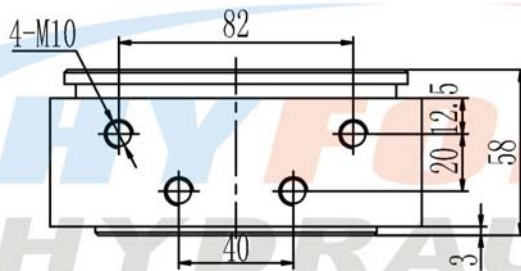
Symbol



Dimensions

Unit: mm

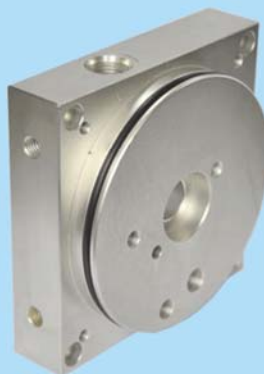
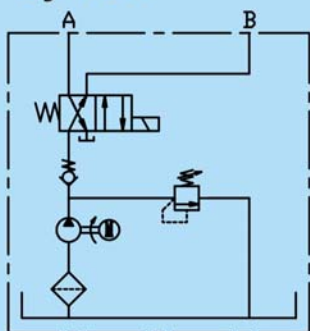
L22



Manifold Block Series

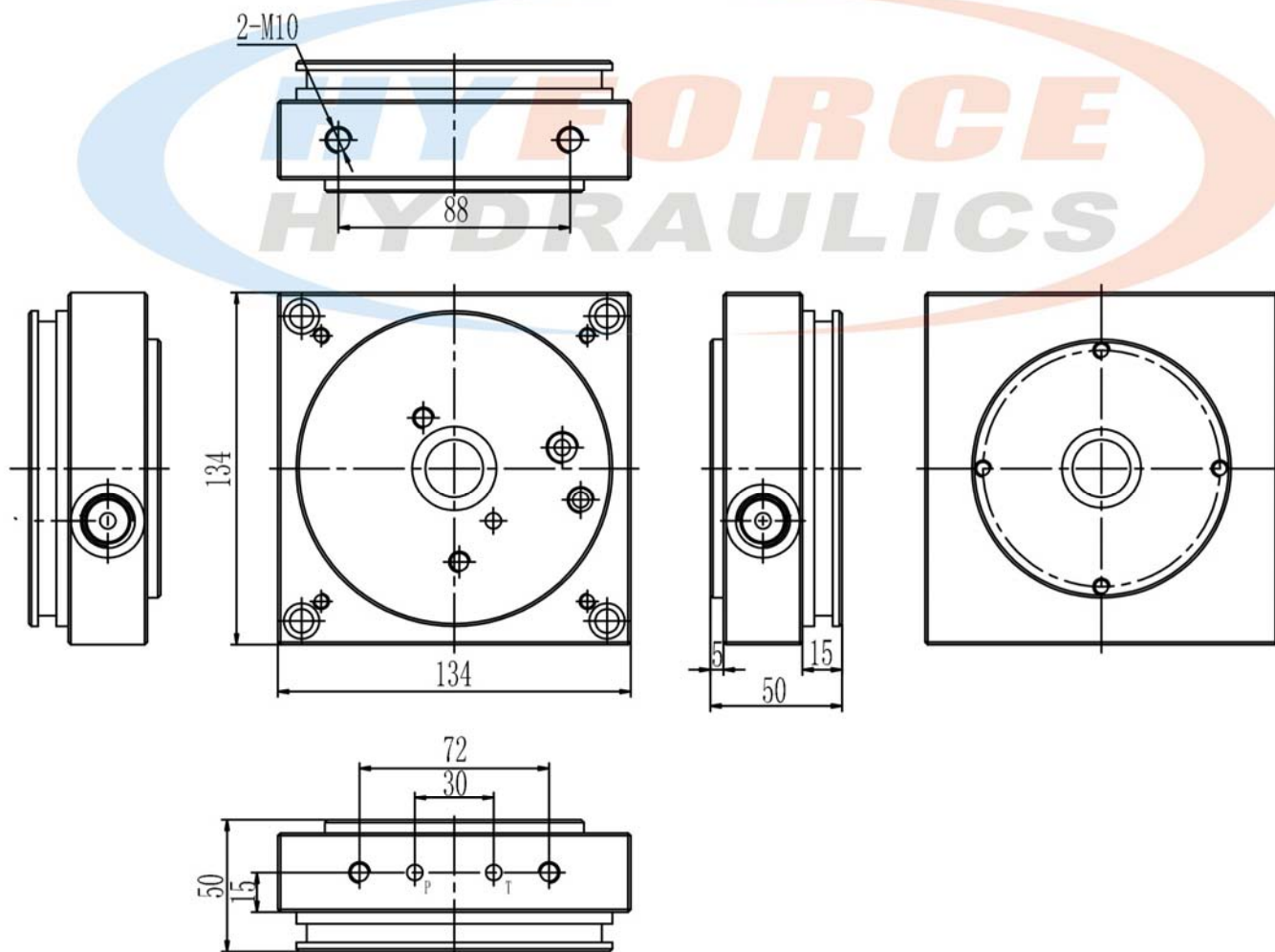
LC Series Center Block for Power Unit

Symbol



Dimensions

Unit: mm



A

B

C

D

E

F

G

H

I

J

K

L23

M

N

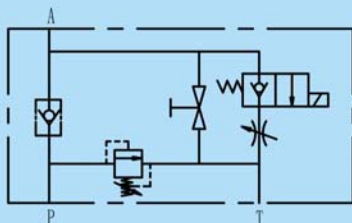
O

P

Manifold with Valves Series

ET-02 Series Thread Type Lift Valve

Symbol



Technical data

Model	ET-02
Max. flow rate (l/min)	20
Max. working pressure (bar)	250
Material	Aluminum 6061-T6
Weight (kgs)	1.2
Min. working voltage	90% of rated voltage
Hydraulic fluid	Mineral oil
Seal material	NBR seals
Temperature range (°C)	-30 to +80
Viscosity range (mm ² /s)	2.8 to 500
Oil cleanliness class according to ISO4406	Class 20/18/15

How to order

ET	02	G	G24	Z5L
Product type	Size	Port thread & size	Input voltage	Connector type
Thread type lift valve	02	G: BSP 1/2" ZG: BSPT 1/2" Z: NPT 1/2"	G12: DC12 G24: DC24 W110: AC110 W220: AC220	DL: Double lead Z5L: Plug-in connector with light

Remark: If choose BSP thread, P1 port size will be BSP 3/8"

A

B

C

D

E

F

G

H

I

J

K

L

M1

N

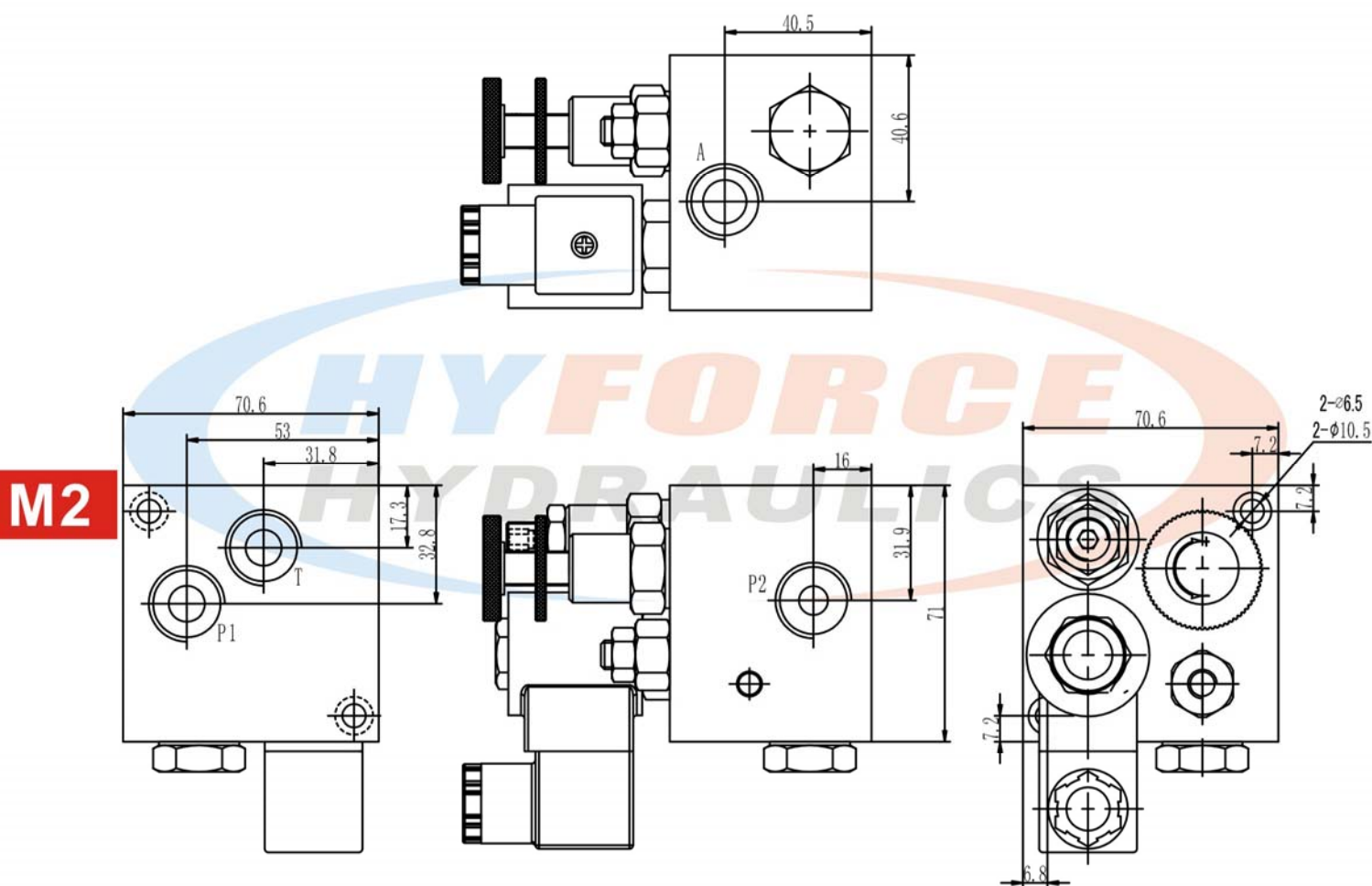
O

P

Manifold with Valves Series

ET-02 series valve dimensions

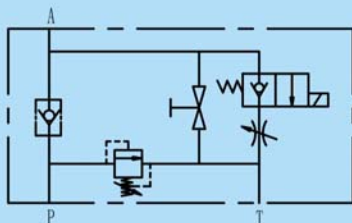
Unit: mm



Manifold with Valves Series

ET-04 Series Thread Type Lift Valve

Symbol



Technical data

Model	ET-04
Max. flow rate (l/min)	40
Max. working pressure (bar)	250
Material	Aluminum 6061-T6
Weight (kgs)	2.6
Min. working voltage	90% of rated voltage
Hydraulic fluid	Mineral oil
Seal material	NBR seals
Temperature range (°C)	-30 to +80
Viscosity range (mm ² /s)	2.8 to 500
Oil cleanliness class according to ISO4406	Class 20/18/15

How to order

ET	04	G	G24	Z5L
Product type	Size	Port thread & size	Input voltage	Connector type
Thread type lift valve	04	G: BSP 1/2" ZG: BSPT 1/2" Z: NPT 1/2"	G12: DC12 G24: DC24 W110: AC110 W220: AC220	DL: Double lead Z5L: Plug-in connector with light

A

B

C

D

E

F

G

H

I

J

K

L

M3

N

O

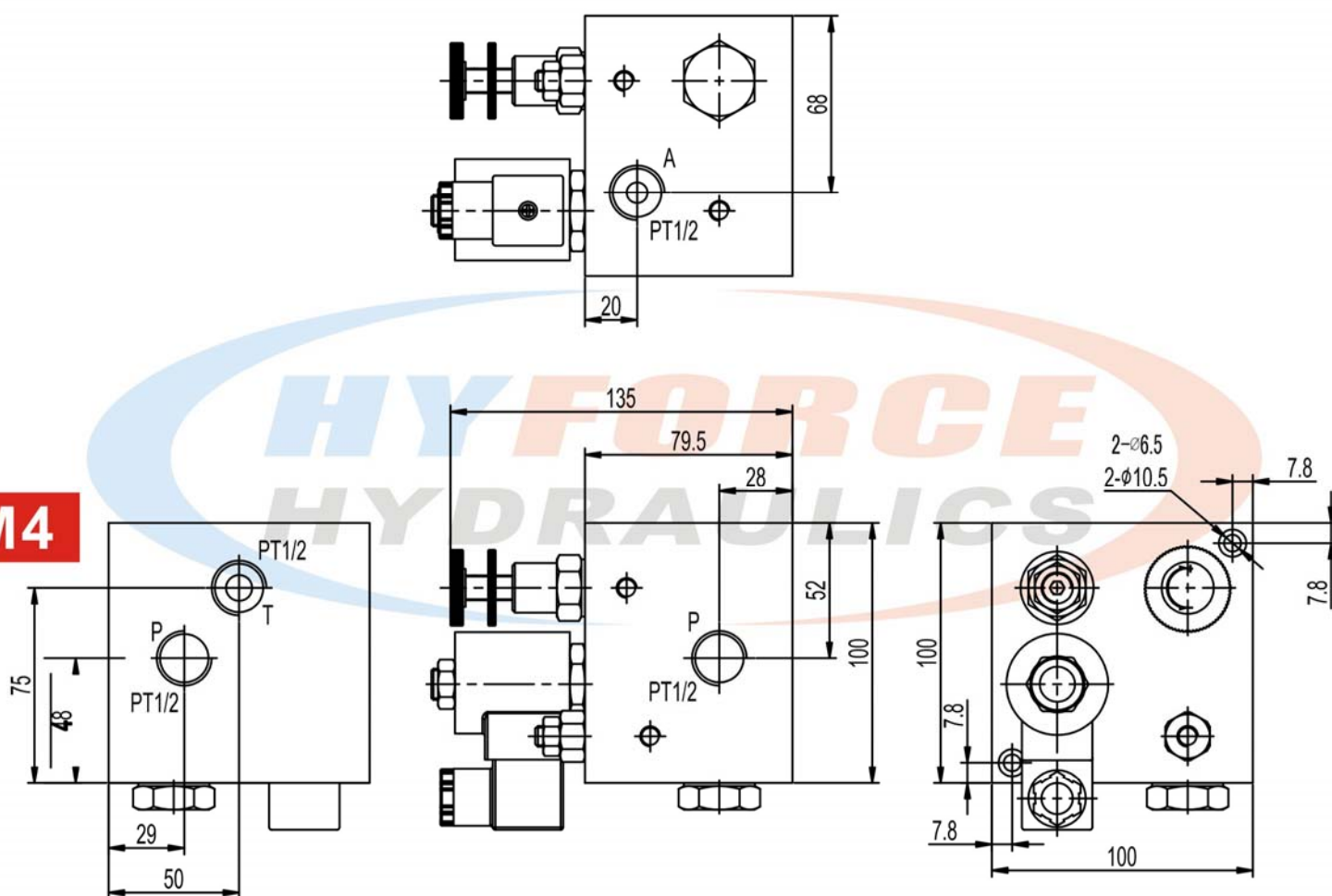
P

Manifold with Valves Series

ET-04 series valve dimensions

Unit: mm

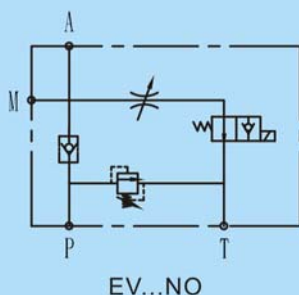
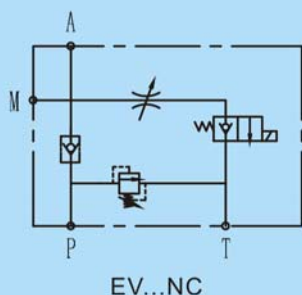
M4



Manifold with Valves Series

EV-04 Series Thread Type Lift Valve

Symbol



Technical data

Model		EV-04
Max. flow rate (l/min)		40
Max. working pressure (bar)		250
Material		Aluminum 6061-T6
Weight (kgs)	Standard	1.8
	With pressure gauge	2
Min. working voltage		90% of rated voltage
Hydraulic fluid		Mineral oil
Seal material		NBR seals
Temperature range (°C)		-30 to +80
Viscosity range (mm²/s)		2.8 to 500
Oil cleanliness class according to ISO4406		Class 20/18/15

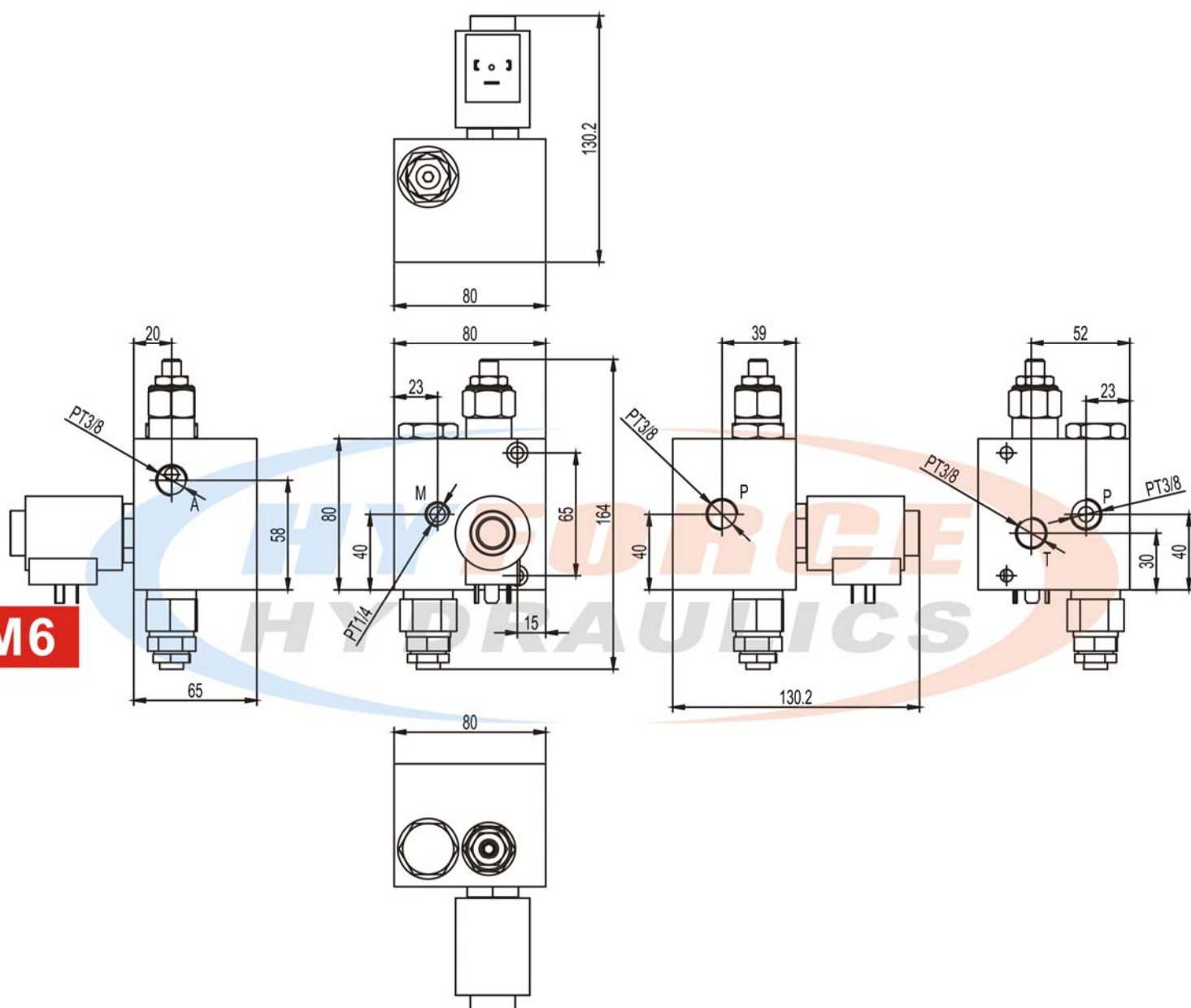
How to order

EV	04	G	NC	P	G24	Z5L
Product type	Size	Port thread & size	Normal state	Pressure gauge	Input voltage	Connector type
Thread type lift valve	04	G: BSP 3/8" ZG: BSPT 3/8" Z: NPT 3/8"	NO: Normally open NC: Normally closed	No code: Standard P: With pressure gauge (0~250bar)	G12: DC12 G24: DC24 W110: AC110 W220: AC220	DL: Double lead Z5L: Plug-in connector with light

Manifold with Valves Series

EV-04 series valve dimensions

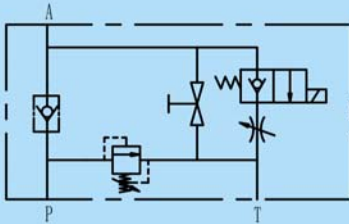
Unit: mm



Manifold with Valves Series

EF-02 Series Flange Type Lift Valve

Symbol



Technical data

Model	EF-02
Max. flow rate (l/min)	20
Max. working pressure (bar)	250
Material	Aluminum 6061-T6
Weight (kg)	0.86
Min. working voltage	90% of rated voltage
Hydraulic fluid	Mineral oil
Seal material	NBR seals
Temperature range (°C)	-30 to +80
Viscosity range (mm ² /s)	2.8 to 500
Oil cleanliness class according to ISO4406	Class 20/18/15

How to order

EF	02	G	G24	Z5L
Product type	Size	Port thread & size	Input voltage	Connector type
Flange type lift valve	02	G: BSP 3/8" ZG: BSPT 3/8" Z: NPT 3/8"	G12: DC12 G24: DC24 W110: AC110 W220: AC220	DL: Double lead Z5L: Plug-in connector with light

A

B

C

D

E

F

G

H

I

J

K

L

M7

N

O

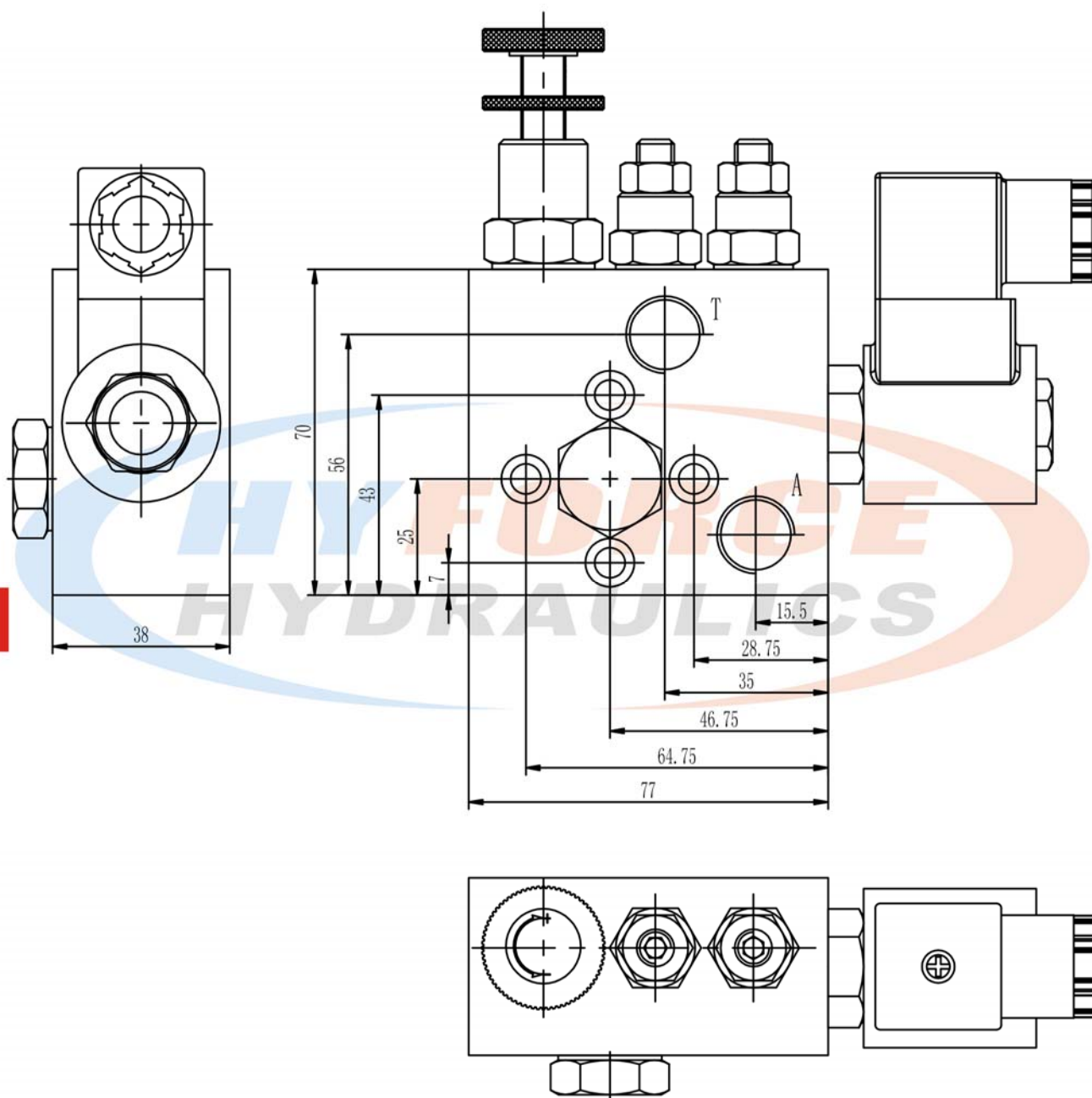
P

Manifold with Valves Series

EF-02 series valve dimensions

Unit: mm

M8



Manifold with Valves Series

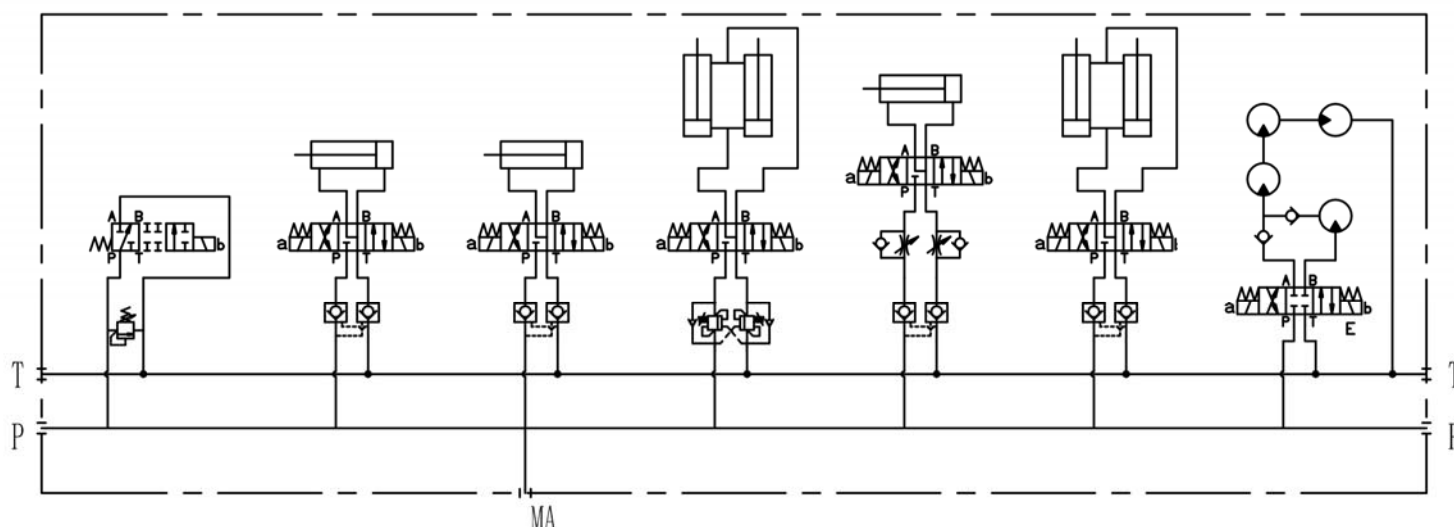
HF01 Series Manifold Block System for Sweeper Truck



Technical data

Model	HF01
Max. flow rate (l/min)	35
Max. working pressure (bar)	250
Weight (kg)	37
Hydraulic fluid	Mineral oil
Seal material	NBR seals
Temperature range (°C)	-30 to +80
Viscosity range (mm ² /s)	2.8 to 500
Oil cleanliness class according to ISO4406	Class 20/18/15

Hydraulic schematic diagram



A

B

C

D

E

F

G

H

I

J

K

L

M9

N

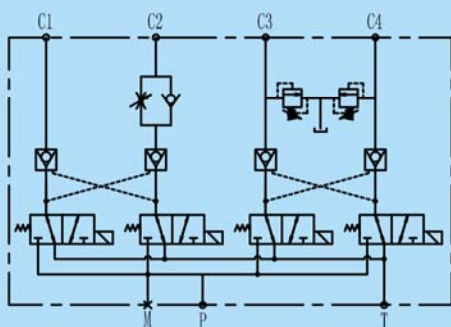
O

P

Manifold with Valves Series

HF02 Series Manifold Block System for Forklift

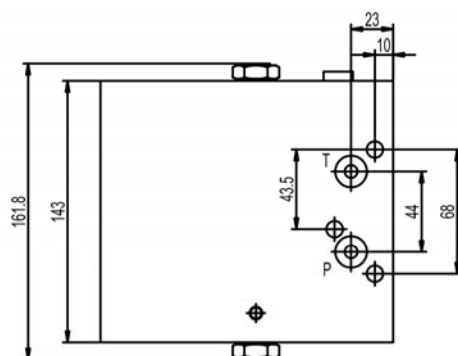
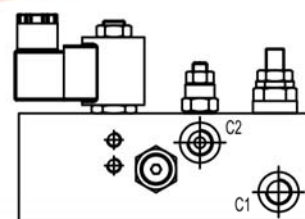
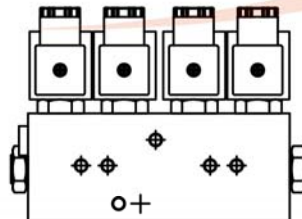
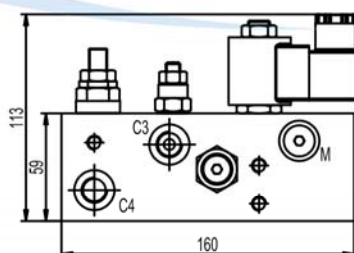
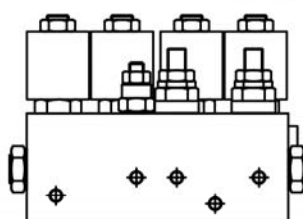
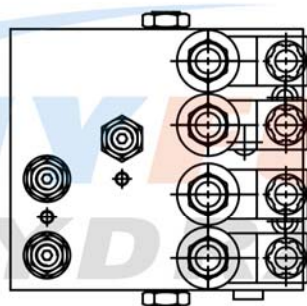
Symbol



HF02 series manifold block system dimensions

Unit: mm

M10

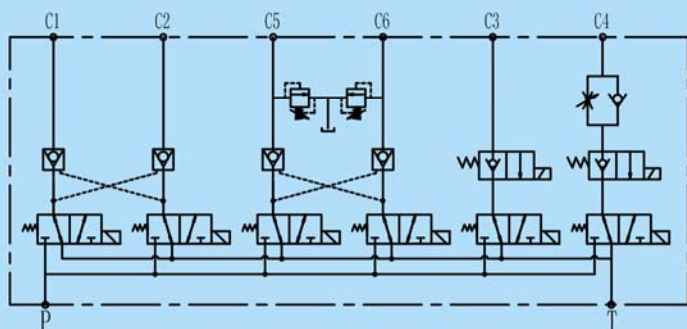


Remark: Regular thread is BSP, if need other thread, please indicate it separately. Net weight is about 5.8kgs.
 Technical date: Max. flow rate is 11/lm, working pressure is 210bar. Voltage: DC12, DC24, AC110, AC220.

Manifold with Valves Series

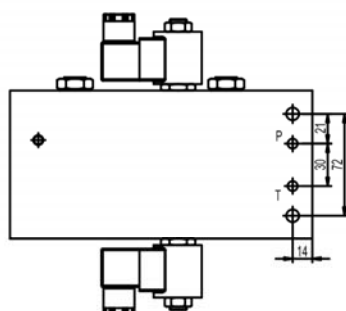
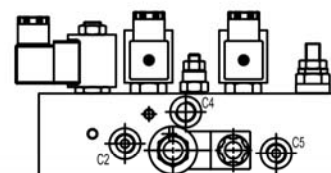
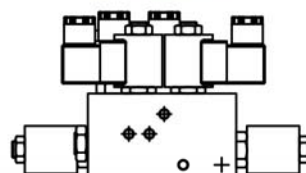
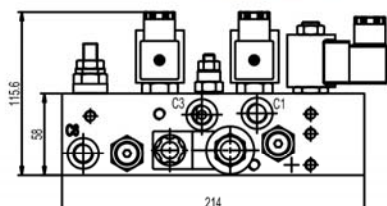
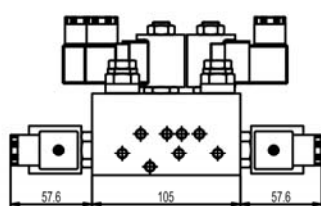
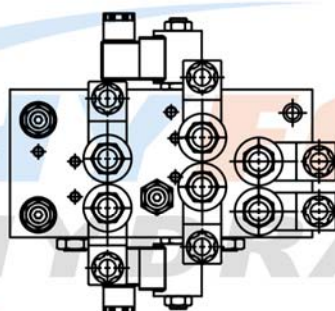
HF03 Series Manifold Block System for Forklift

Symbol



HF03 series manifold block system dimensions

Unit: mm

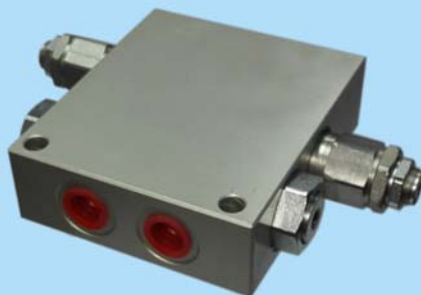
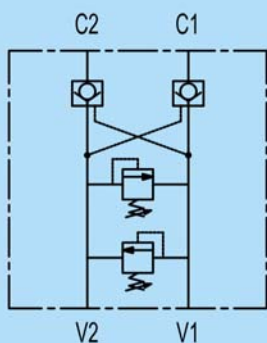


Remark: Regular thread is BSP, if need other thread, please indicate it separately. Net weight is about 6.5kgs.
Technical date: Max. flow rate is 11/lm, working pressure is 210bar. Voltage: DC12, DC24, AC110, AC220.

Manifold with Valves Series

HT01 Series Integrated Valve

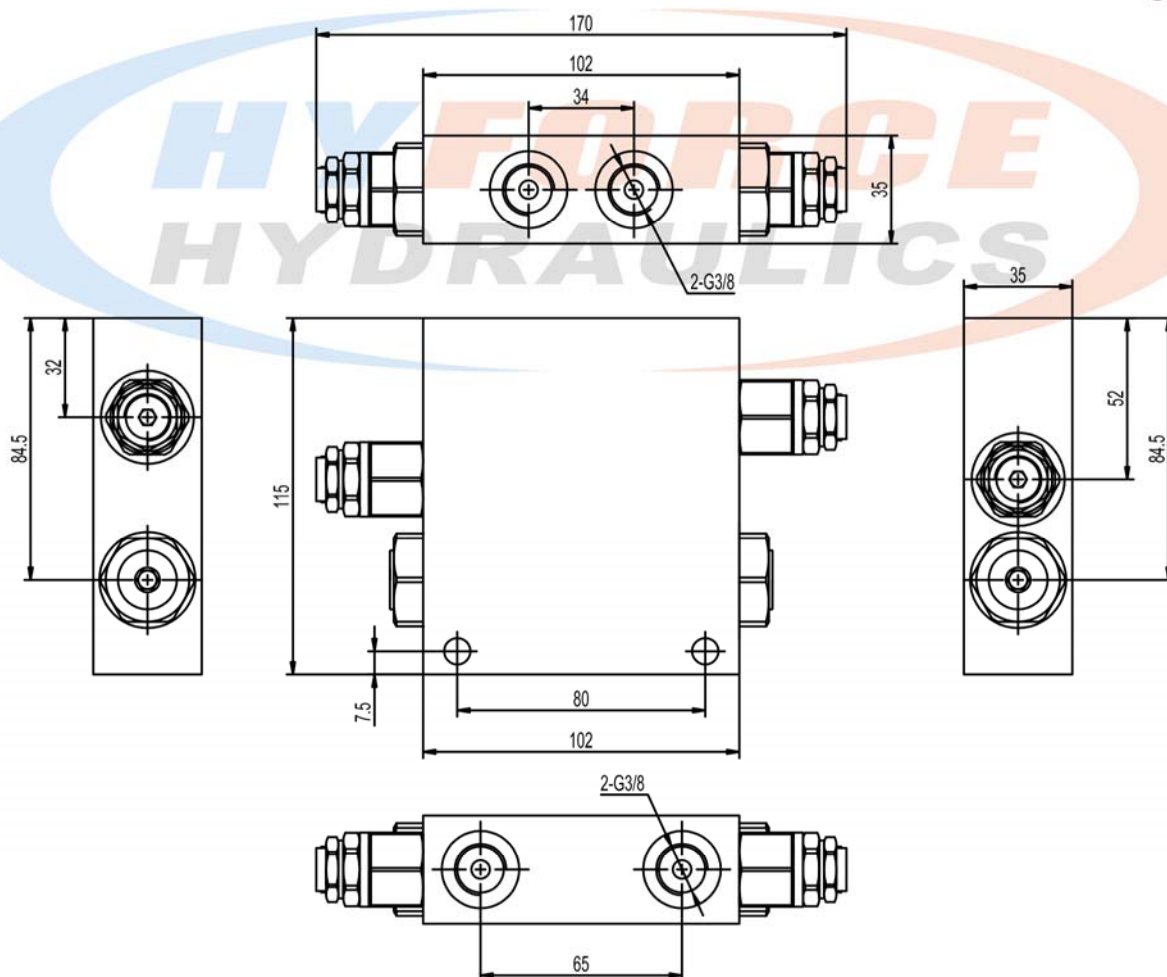
Symbol



HT01 series valve dimensions

Unit: mm

M12

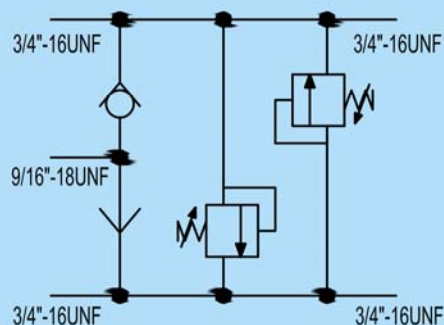


Remark: Regular thread is BSP, if need other thread, please indicate it separately. Net weight is about 1.4kgs.
 Technical date: Max. flow rate is 30/lm, working pressure is 210bar.

Manifold with Valves Series

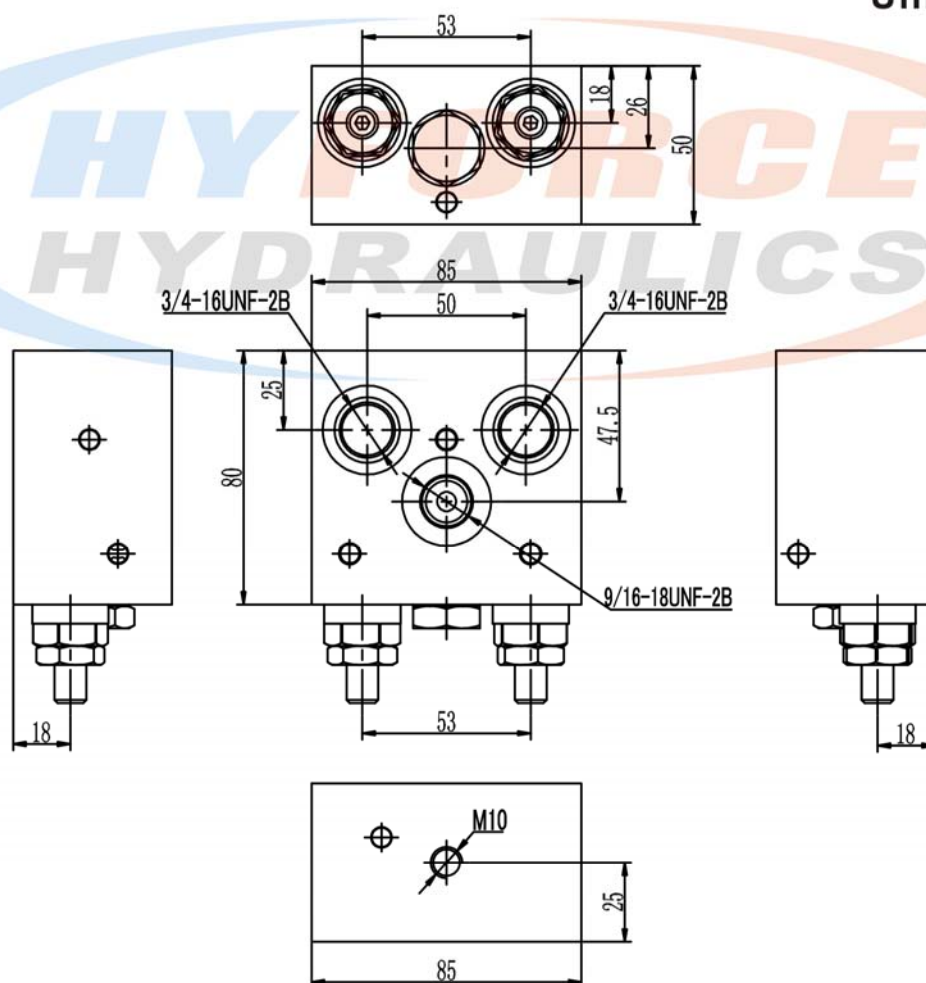
HT02 Series Integrated Valve

Symbol



HT02 series valve dimensions

Unit: mm

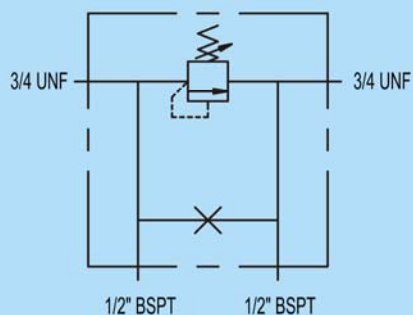


Remark: Regular thread is SAE, if need other thread, please indicate it separately. Net weight is about 1kg.
 Technical date: Max. flow rate can be 10l/m, 20l/m and 30l/m, working pressure is 210bar.

Manifold with Valves Series

HT03 Series Integrated Valve

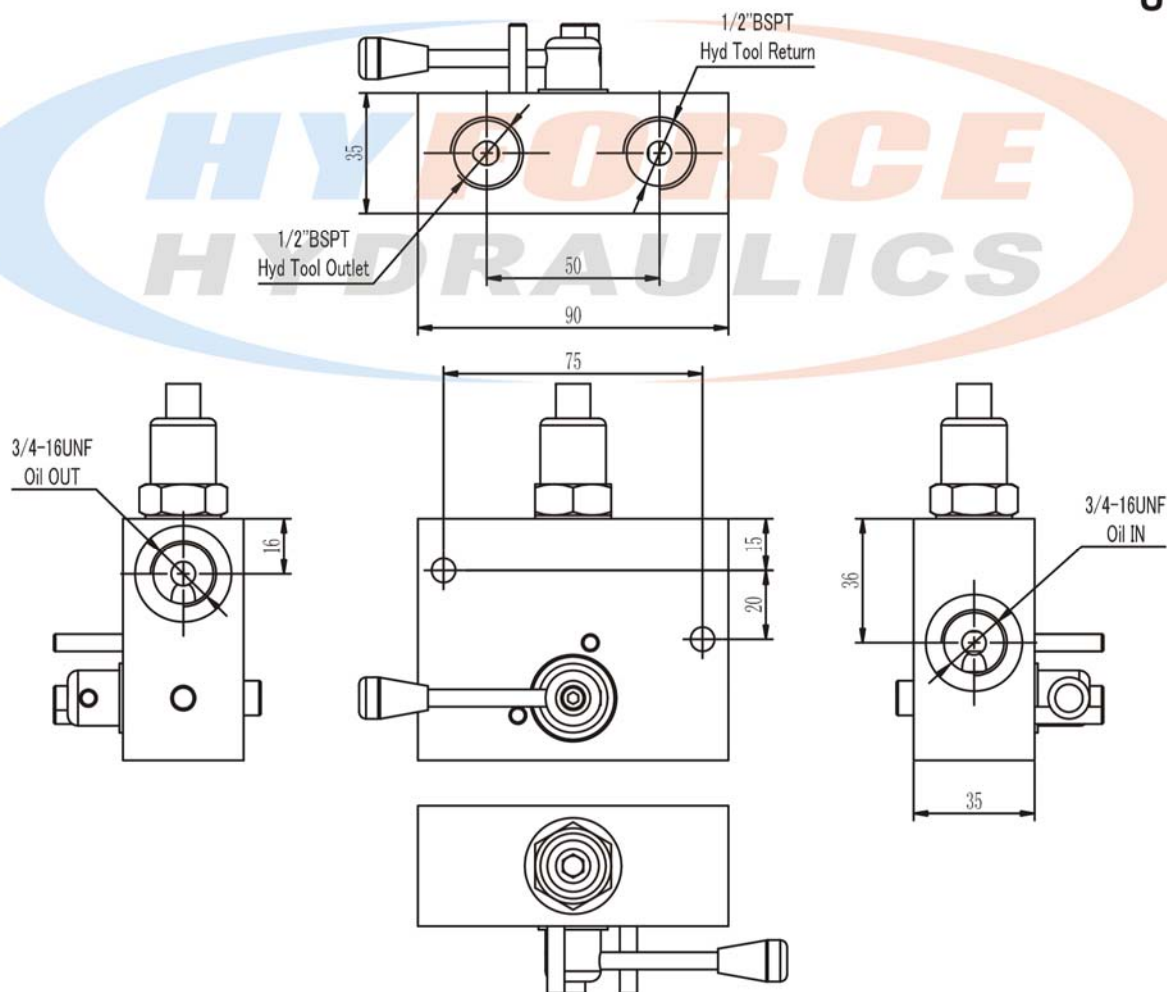
Symbol



HT03 series valve dimensions

Unit: mm

M14

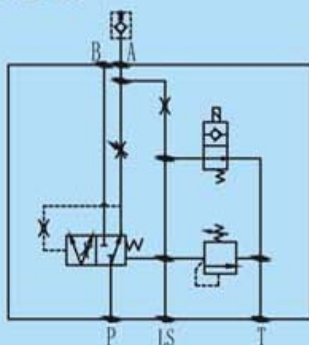


Remark: Different type of port thread is available according to customer's demand. Net weight is about 0.7kg.
 Technical date: Max. flow rate is 20/lm, working pressure is 210bar.

Manifold with Valves Series

FDV06 Series Pressure Compensated Flow Regulators 3 Ways with Solenoid Control and Relief Valve

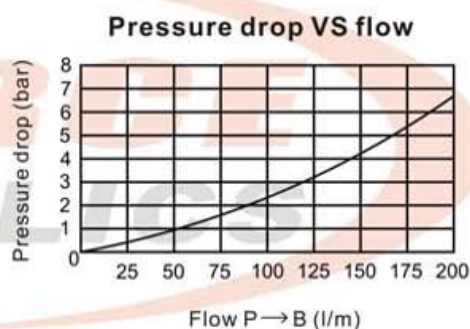
Symbol



Metal knob

Technical data

Model	FDV06
Max. inlet flow rate (l/min)	200
Max. working pressure (MPa)	25
Material	Steel C45
Weight (kgs)	5.5
Min. working voltage	90% of rated voltage
Hydraulic fluid	Mineral oil
Seal material	NBR seals
Temperature range (°C)	-30 to +80
Viscosity range (mm ² /s)	2.8 to 500
Oil cleanliness class according to ISO4406	Class 20/18/15



How to order

FDV	06	E	G12	M
Product type	Port size	External control port	Input voltage	Adjustment type
Pressure compensated flow regulator, 3 ways with solenoid control and relief Valve	A: BSP3/4" B: BSP3/4" P: BSP3/4" T: BSP1/4"	No code: Standard E: With LS external control port	G12: DC12 G24: DC24 W110: AC110 W220: AC220	No code: Grub screw M: Metal knob

Manifold with Valves Series

FDV06 series valve dimensions

Unit: mm

