

Ningbo Hyforce Hydraulic Machinery Co., Ltd

Construction Machinery Hydraulic Valves



Office Address: Room 15B04, Aolisai Building, No.958 Qianhu North Road, Yinzhou, Ningbo, China
Zip Code: 315100
Plant Address: No.6, Hezhou Road, Jiaochuan Street, Zhenhai, Ningbo, China
Zip Code: 315207
TEL: 0086-574-88017526; FAX: 0086-574-88017527
Website: www.hy-force.com
Email: sales@hy-force.com

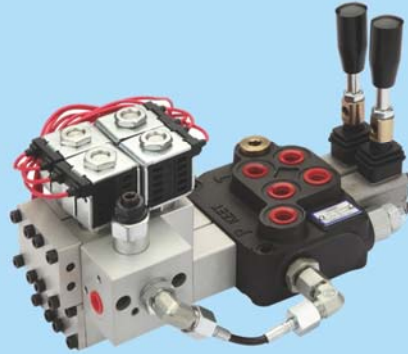
Ningbo Hyforce Hydraulic Machinery Co., Ltd

Content of Construction Machinery Hydraulic Valve Series

Content of Construction Machinery Hydraulic Valve Series	Page No.
DCV20 Series Directional Monoblock Valve	P1-P2
DCV40 Series Directional Sectional Valve	P3-P4
DCV60/150SP Series Directional Sectional Valve	P5-P6
DCV80M Series Directional Monoblock Valve	P7-P8
DCV80MR Series Directional Monoblock Valve	P9-P10
DCV80S Series Directional Sectional Valve	P11-P12
DCV80SP Series Directional Sectional Valve	P13-P14
DCV100SP Series Directional Sectional Valve	P15-P16
DCV120SE Series Proportional Directional Sectional Valve	P17-P18
MDCV120S Series Proportional Directional Sectional Valve	P19-P20
QYZTF-S10C Series Directional Monoblock Valve	P21-P22
QYZTF-S10D Series Directional Monoblock Valve	P23-P24
YZ15 Series Directional Sectional Valve	P25-P26
SJC Series Directional Monoblock Valve	P27-P28
DMD-35 Series Directional Control Valve	P29-P30
D10/6 Series Directional Monoblock Valve	P31-P32
AS320A Series Intergrated Valve	P33-P34
XZ320D Series Intergrated Valve	P35-P36
DFK Series Intergrated Valve	P37-P38
PQB Series Intergrated Valve	P39-P40

Construction Machinery Hydraulic Valve Series

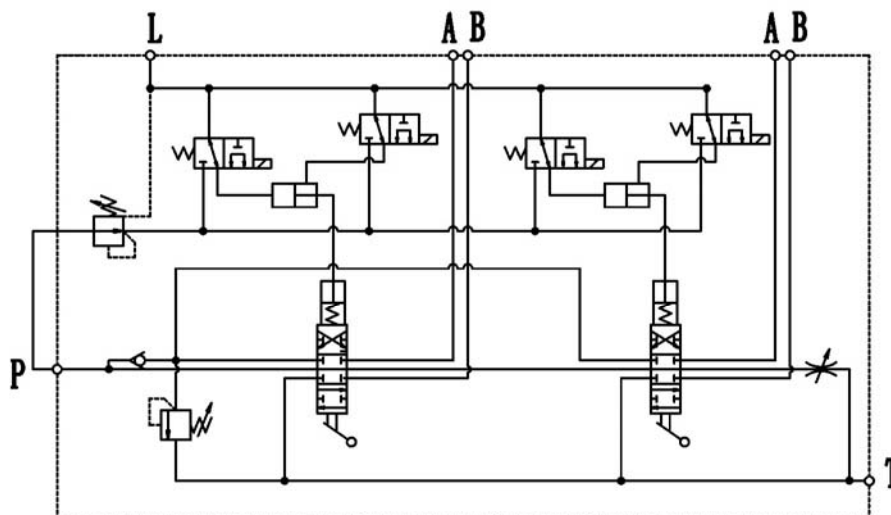
DCV20 Series Directional Monoblock Valve



Technical data

Model	DCV20
Max. flow rate (l/min)	30
Max. working pressure (bar)	300
Allowable backpressure (bar)	30
Working sections	1 ~ 6
Solenoid voltage	DC12V/DC24V
Spool stroke (mm)	+5 ~ -5
Hydraulic fluid	Mineral oil
Temperature range (°C)	-20 to +80
Recommended filtration (μm)	≤10

Hydraulic schematic diagram



A

B

C

D

E

F

G

H

I

J

K

L

M

N

O

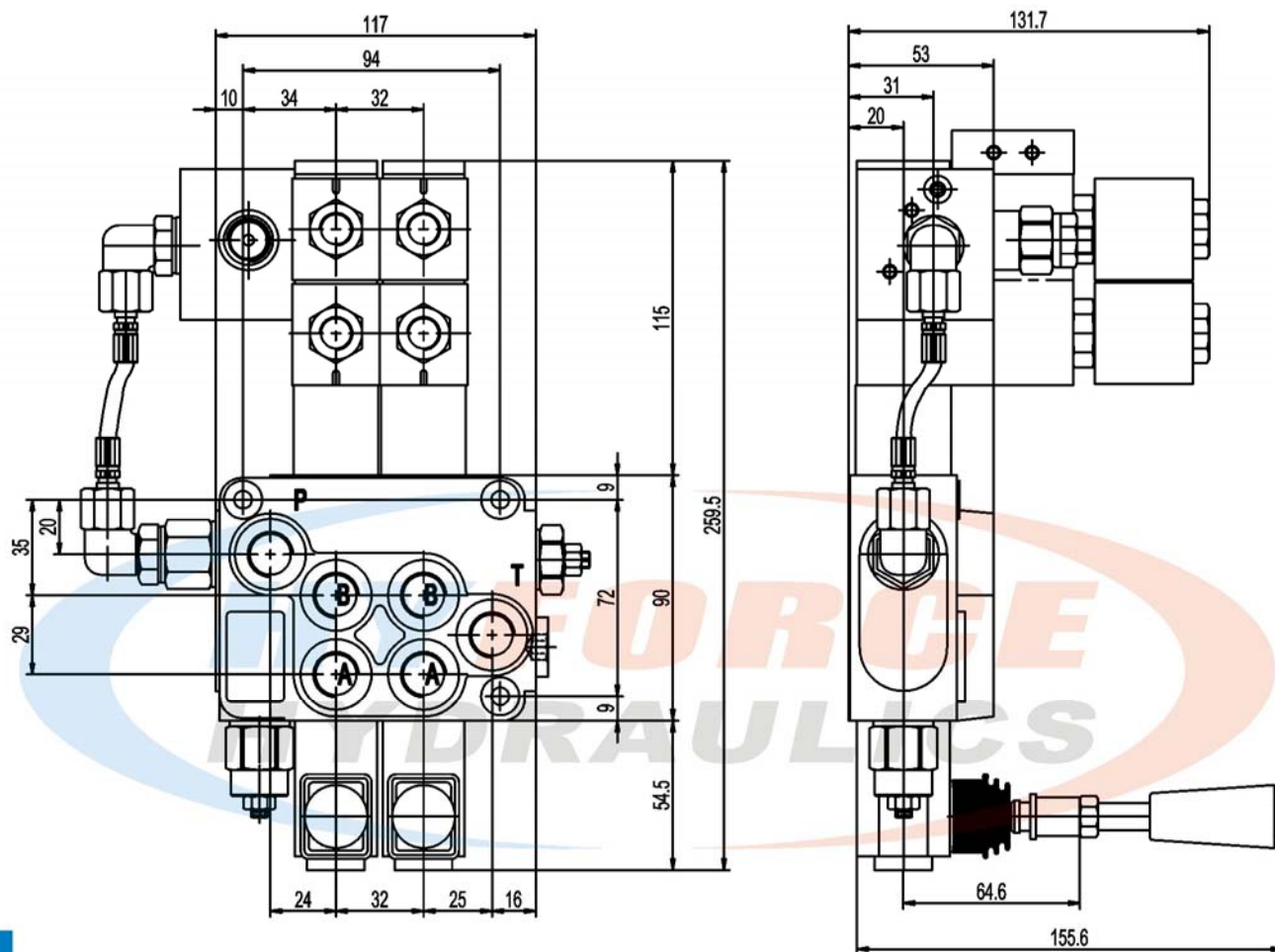
P1



Construction Machinery Hydraulic Valve Series

DCV20 Series Directional Monoblock Valve

Unit: mm

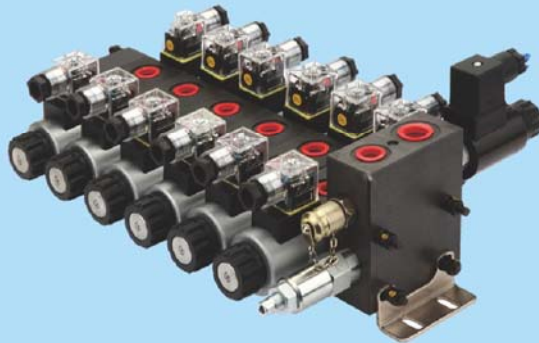


P2

Oil port	Size
P, A*, B*	BSP3/8"
T	BSP1/2"
L	BSP1/4"

Construction Machinery Hydraulic Valve Series

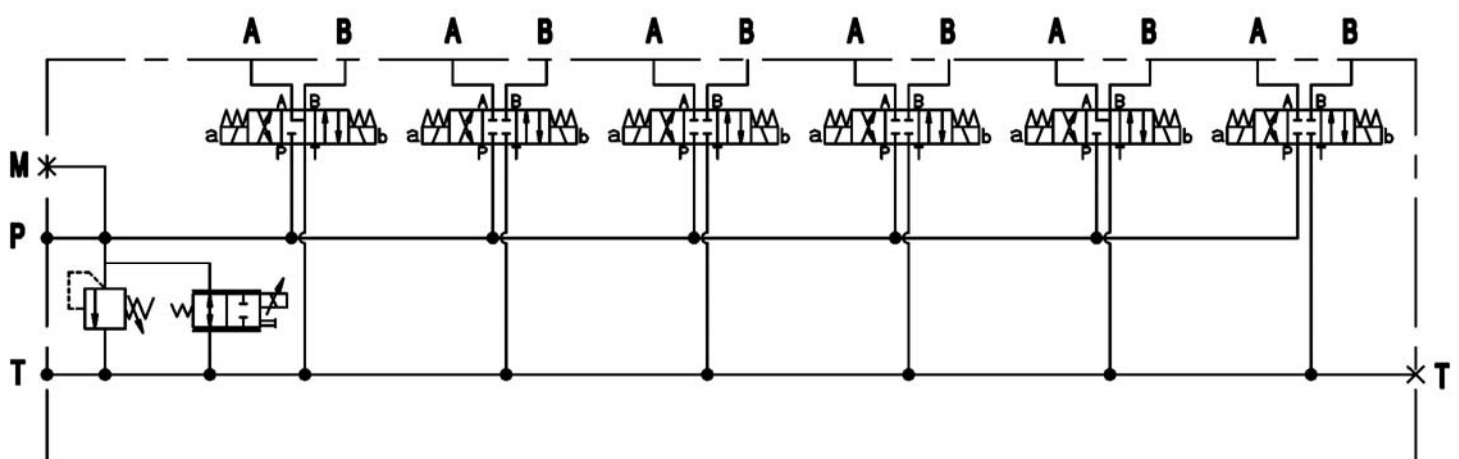
DCV40 Series Directional Sectional Valve



Technical data

Model	DCV40
Max. flow rate (l/min)	40
Max. working pressure (bar)	250
Allowable backpressure (bar)	20
Working sections	1 ~ 6
Solenoid voltage	DC12V/DC24V
Spool stroke (mm)	+3 ~ -3
Hydraulic fluid	Mineral oil
Temperature range (°C)	-20 to +80
Recommended filtration (μm)	≤10

Hydraulic schematic diagram



A

B

C

D

E

F

G

H

I

J

K

L

M

N

O

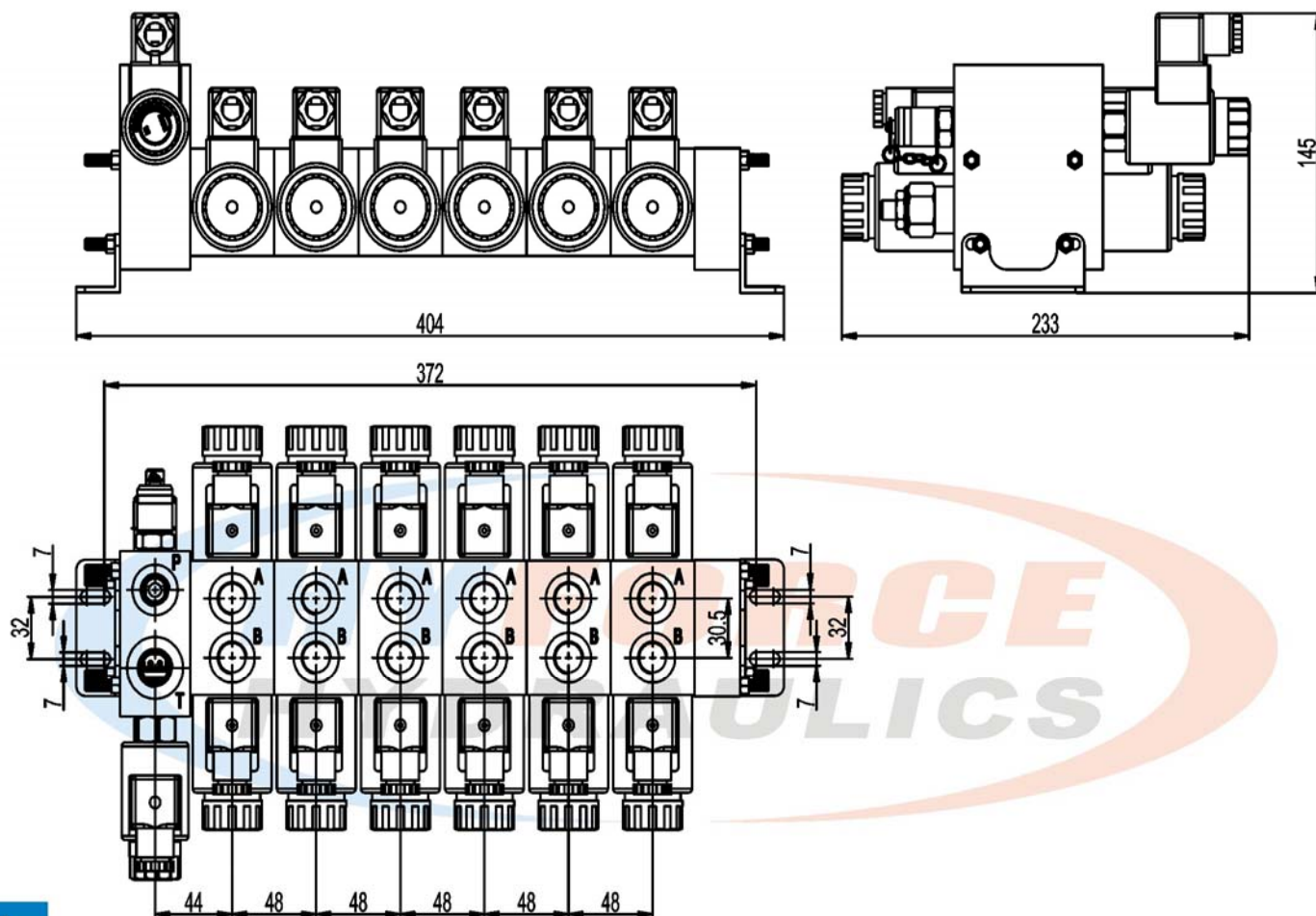
P3



Construction Machinery Hydraulic Valve Series

DCV40 Series Directional Sectional Valve

Unit: mm



P4

Oil port	Size
P, A*, B*	BSP3/8"
T*	BSP1/2"
M	BSP1/4"



Construction Machinery Hydraulic Valve Series

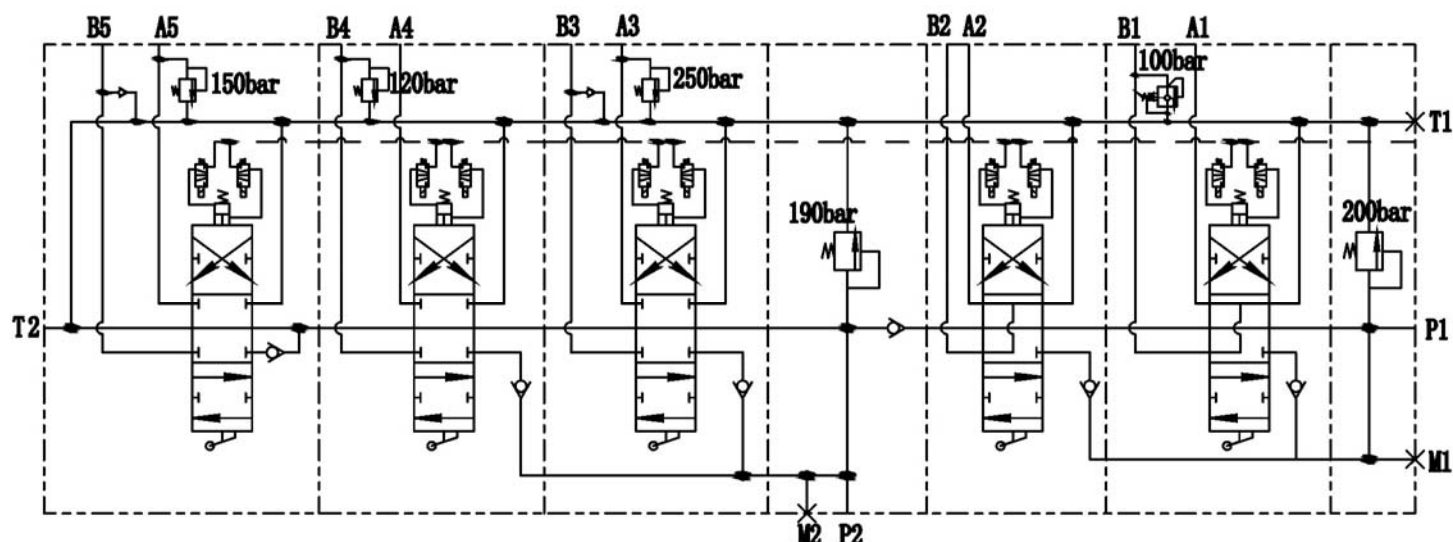
DCV60/150SP Series Directional Sectional Valve



Technical data

Model	DCV60/150SP
Max. flow rate (l/min)	100
Max. working pressure (bar)	315
Working sections	1 ~ 6
Solenoid voltage	DC12V/DC24V
Hydraulic fluid	Mineral oil
Temperature range (°C)	-20 to +80
Recommended filtration (μm)	≤10

Hydraulic schematic diagram



A

B

C

D

E

F

G

H

I

J

K

L

M

N

O

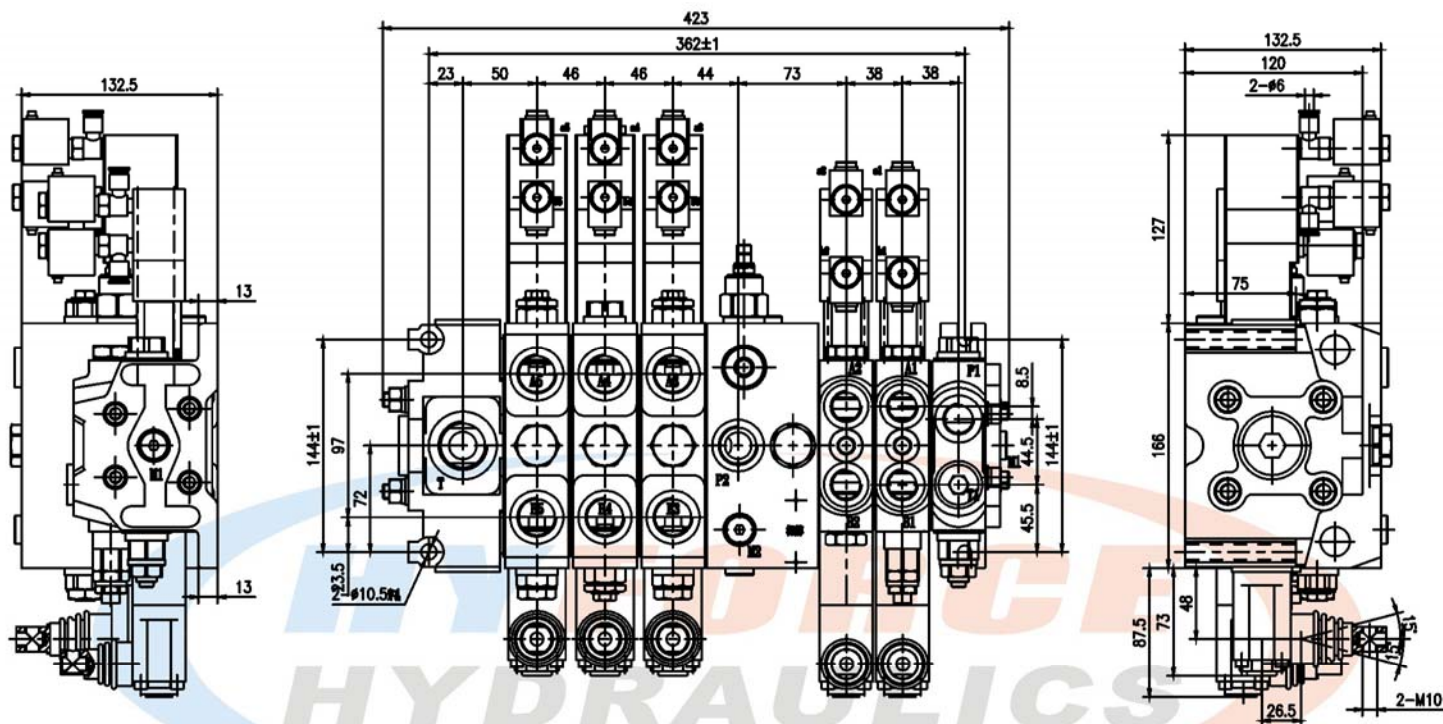
P5



Construction Machinery Hydraulic Valve Series

DCV60/150SP Series Directional Sectional Valve

Unit: mm



P6

Oil port	Size
A*, B*	BSP1/2"
P*, T*	BSP3/4"
M*	BSP1/4"

Construction Machinery Hydraulic Valve Series

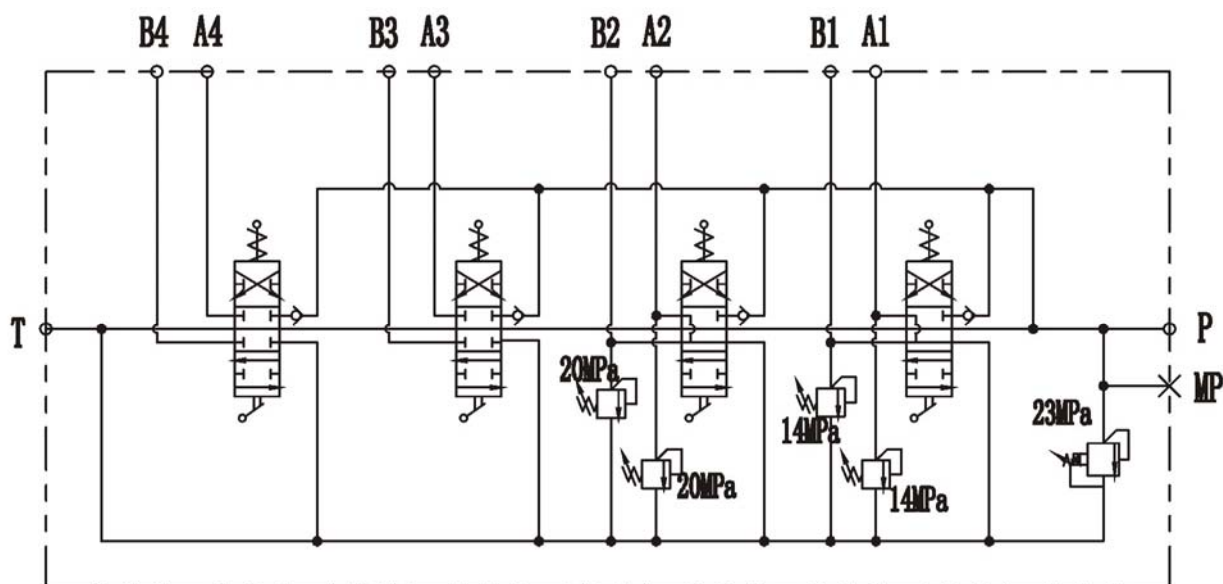
DCV80M Series Directional Monoblock Valve



Technical data

Model	DCV80M/4
Max. flow rate (l/min)	80
Max. working pressure (bar)	315
Working sections	4
Spool stroke (mm)	+6 ~ -6
Hydraulic fluid	Mineral oil
Temperature range (°C)	-20 to +80
Recommended filtration (μm)	≤10

Hydraulic schematic diagram



A

B

C

D

E

F

G

H

I

J

K

L

M

N

O

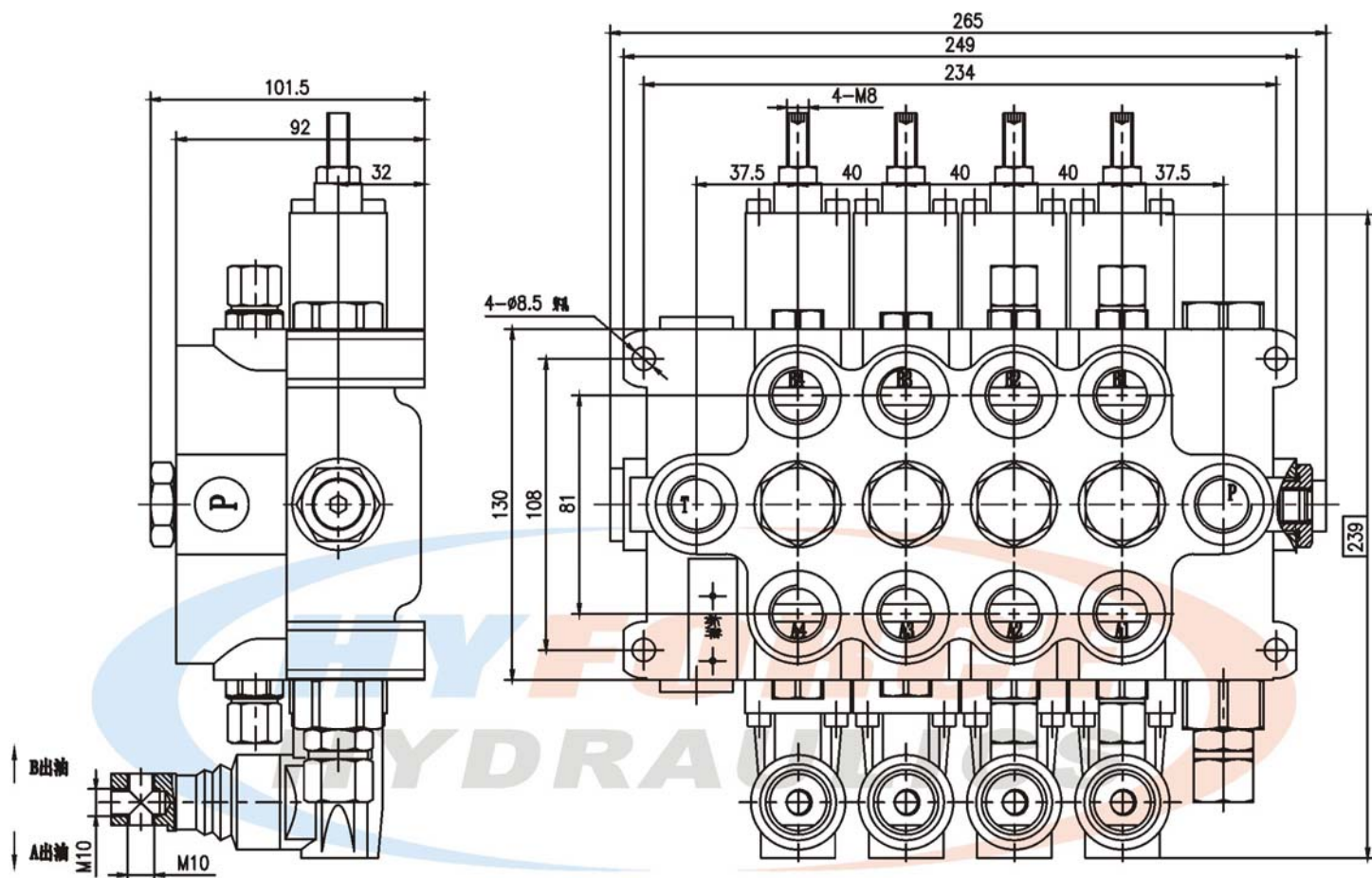
P7



Construction Machinery Hydraulic Valve Series

DCV80M Series Directional Monoblock Valve

Unit: mm



P8

Oil port	Size
P, T, A*, B*	BSP1/2"
MP	BSP1/4"

Construction Machinery Hydraulic Valve Series

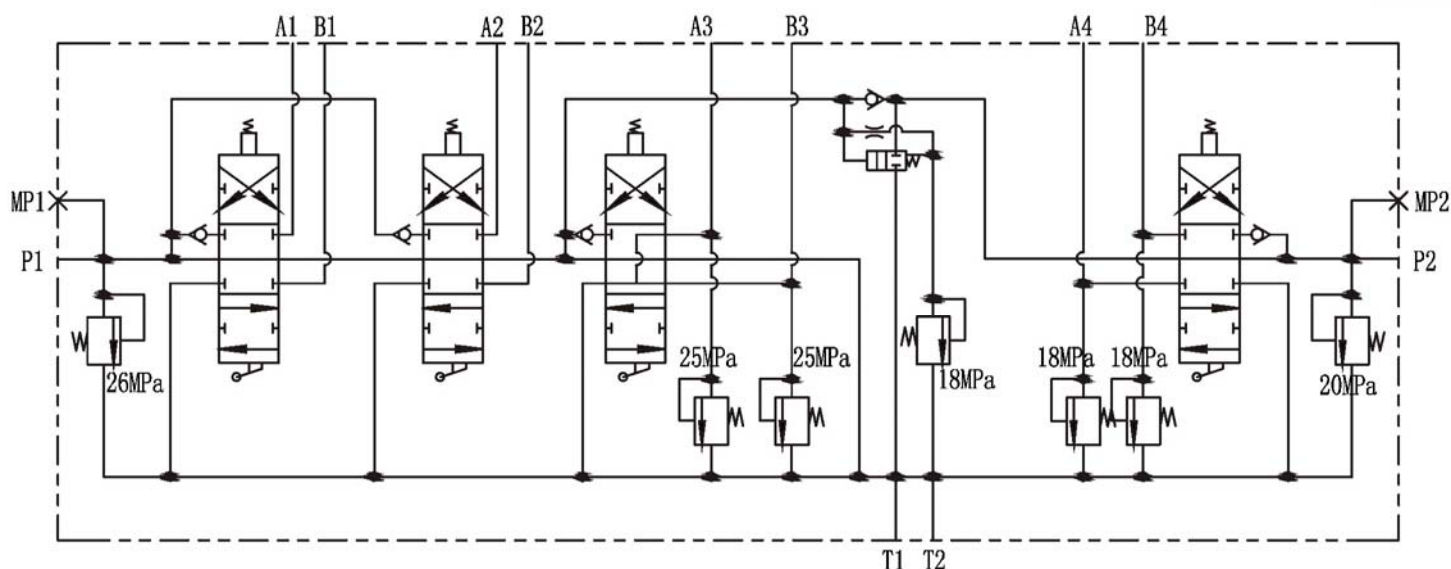
DCV80MR Series Directional Monoblock Valve



Technical data

Model	DCV80MR/4
Max. flow rate (l/min)	120
Max. working pressure (bar)	315
Working sections	4
Spool stroke (mm)	+6 ~ -6
Hydraulic fluid	Mineral oil
Temperature range (°C)	-30 to +80
Recommended filtration (μm)	≤10

Hydraulic schematic diagram



A

B

C

D

E

F

G

H

I

J

K

L

M

N

O

P9

Construction Machinery Hydraulic Valve Series

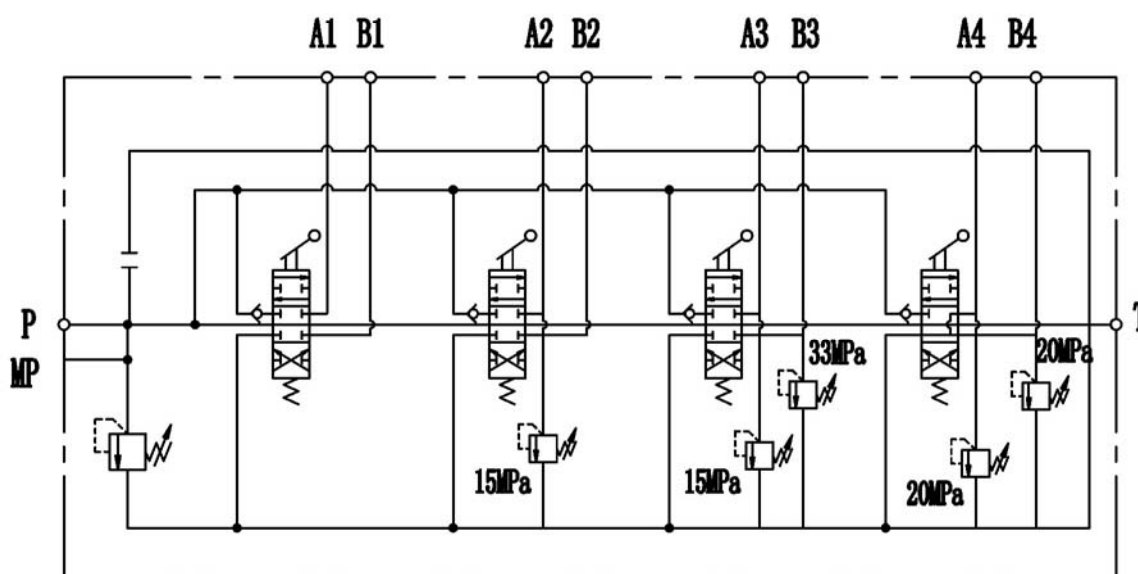
DCV80S Series Directional Sectional Valve



Technical data

Model	DCV80S
Max. flow rate (l/min)	80
Max. working pressure (bar)	350
Allowable backpressure (bar)	20
Working sections	1 ~ 6
Spool stroke (mm)	+6 ~ -6
Hydraulic fluid	Mineral oil
Temperature range (°C)	-20 to +80
Recommended filtration (μm)	≤10

Hydraulic schematic diagram



A

B

C

D

E

F

G

H

I

J

K

L

M

N

O

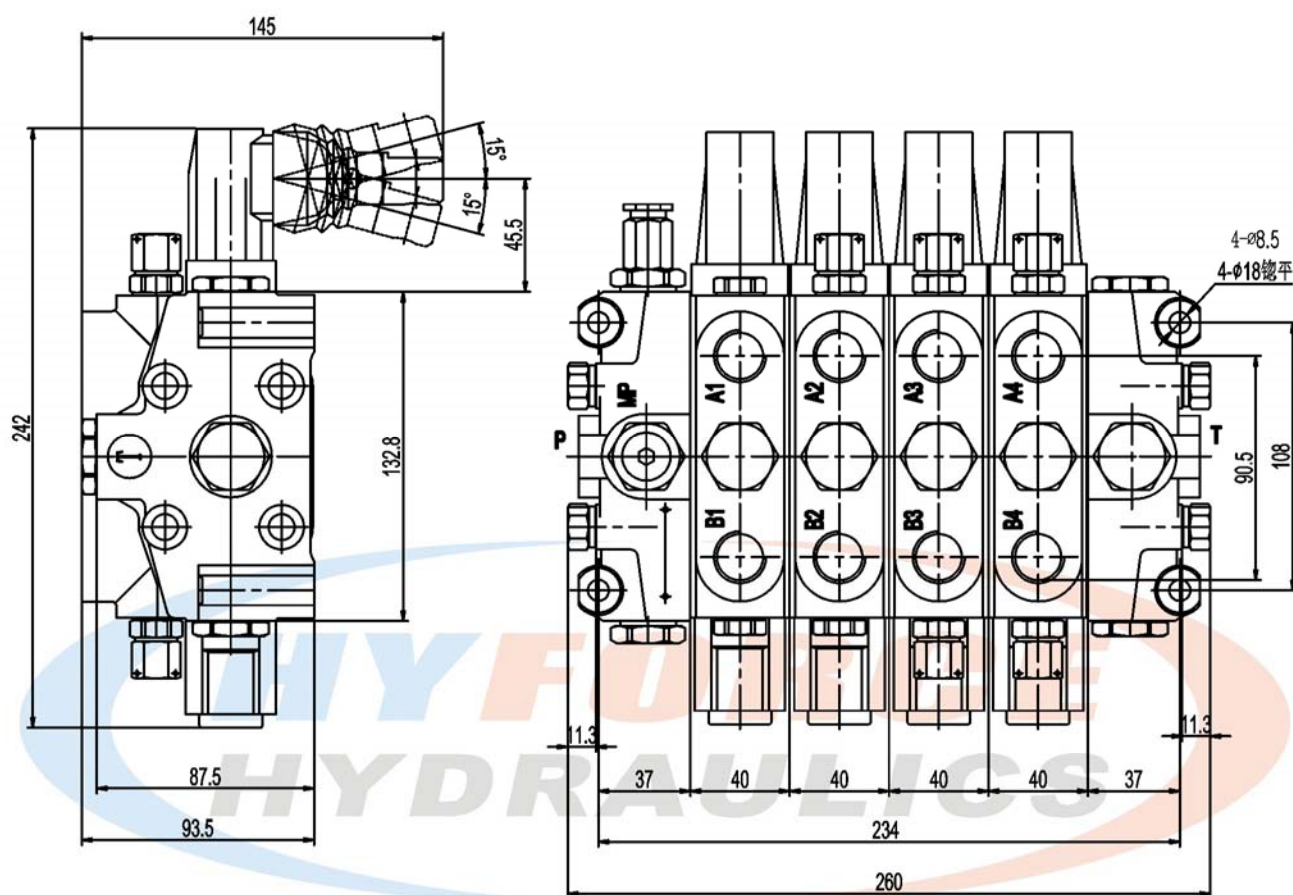
P11



Construction Machinery Hydraulic Valve Series

DCV80S Series Directional Sectional Valve

Unit: mm



P12

Oil port	Size
P, T, A*, B*	BSP1/2"
MP	BSP1/4"

Construction Machinery Hydraulic Valve Series

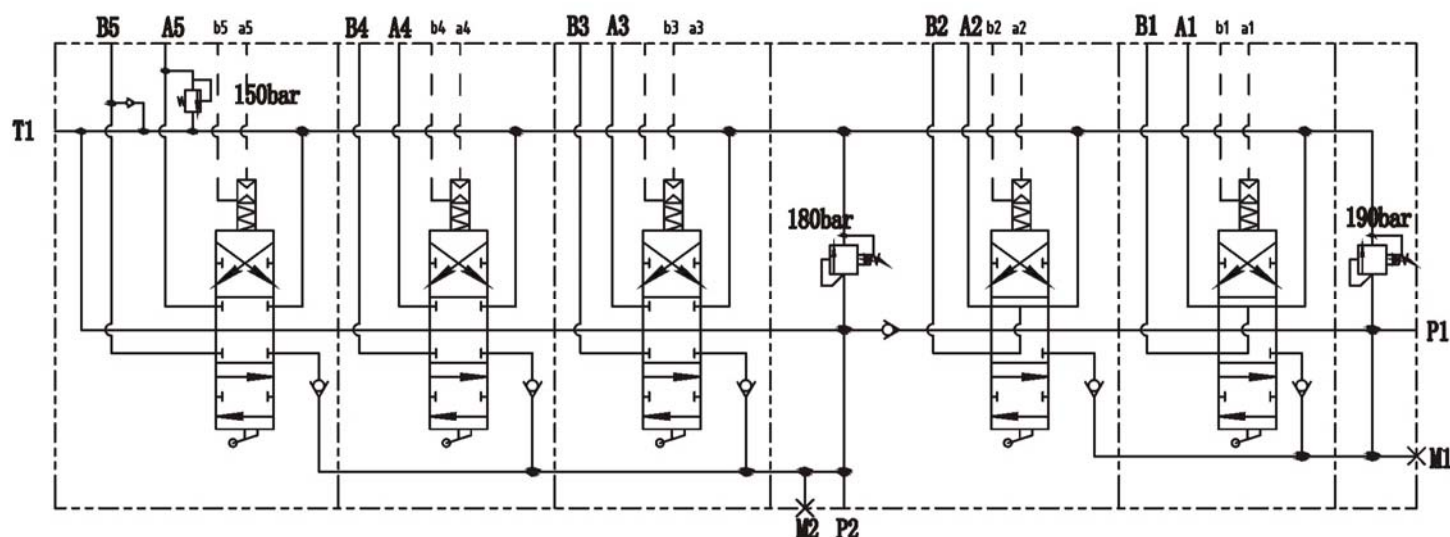
DCV80SP Series Directional Sectional Valve



Technical data

Model	DCV80SP/5
Max. flow rate (l/min)	80
Max. working pressure (bar)	315
Working sections	5
Spool stroke (mm)	+6 ~ -6
Hydraulic fluid	Mineral oil
Temperature range (°C)	-20 to +80
Recommended filtration (μm)	≤10

Hydraulic schematic diagram



A

B

C

D

E

F

G

H

I

J

K

L

M

N

O

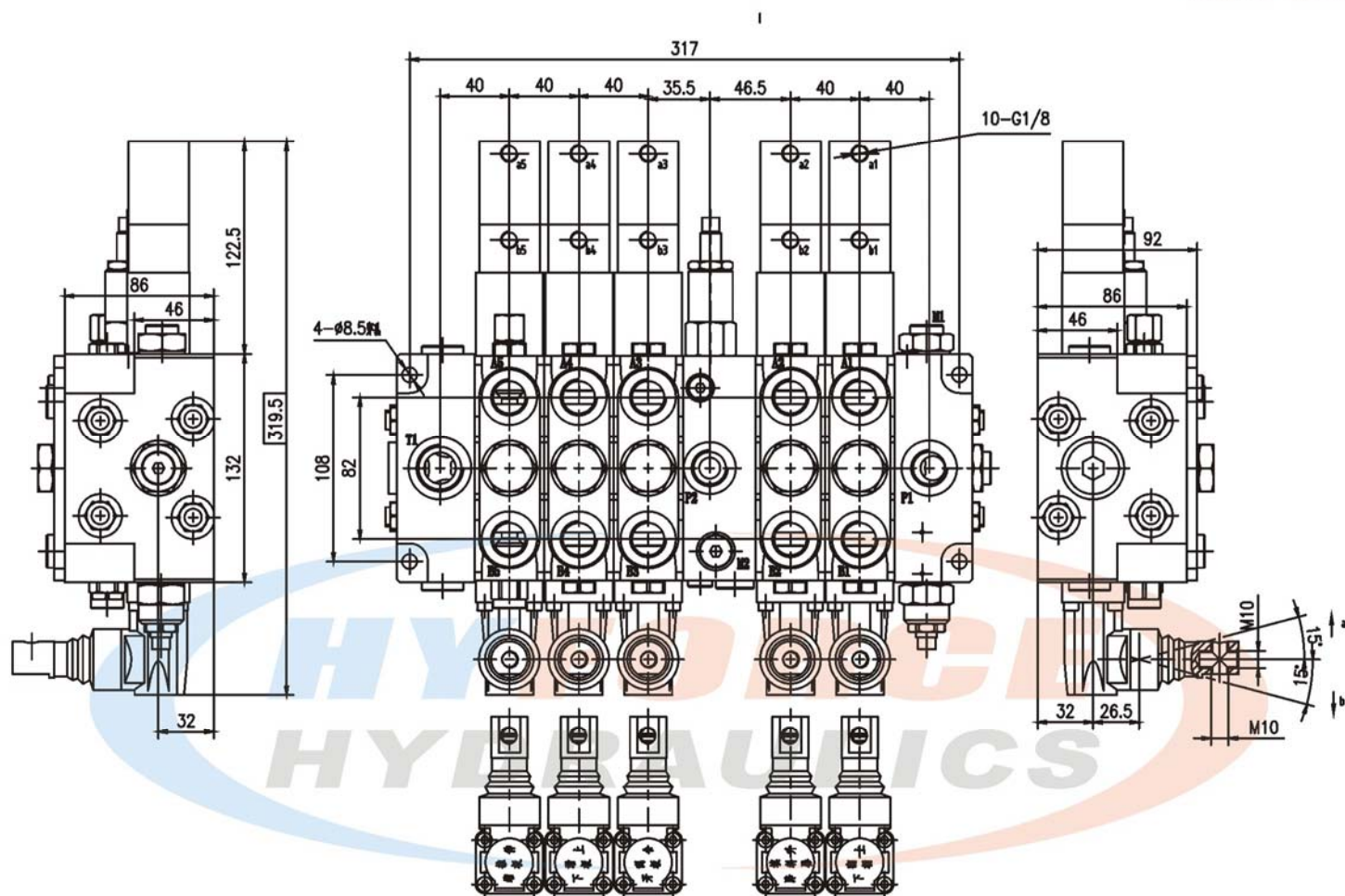
P13



Construction Machinery Hydraulic Valve Series

DCV80SP Series Directional Sectional Valve

Unit: mm



P14

Oil port	Size
P*, T*, A*, B*	BSP1/2"
M*	BSP1/4"

Air port	Size
a*, b*	BSP1/8"

Construction Machinery Hydraulic Valve Series

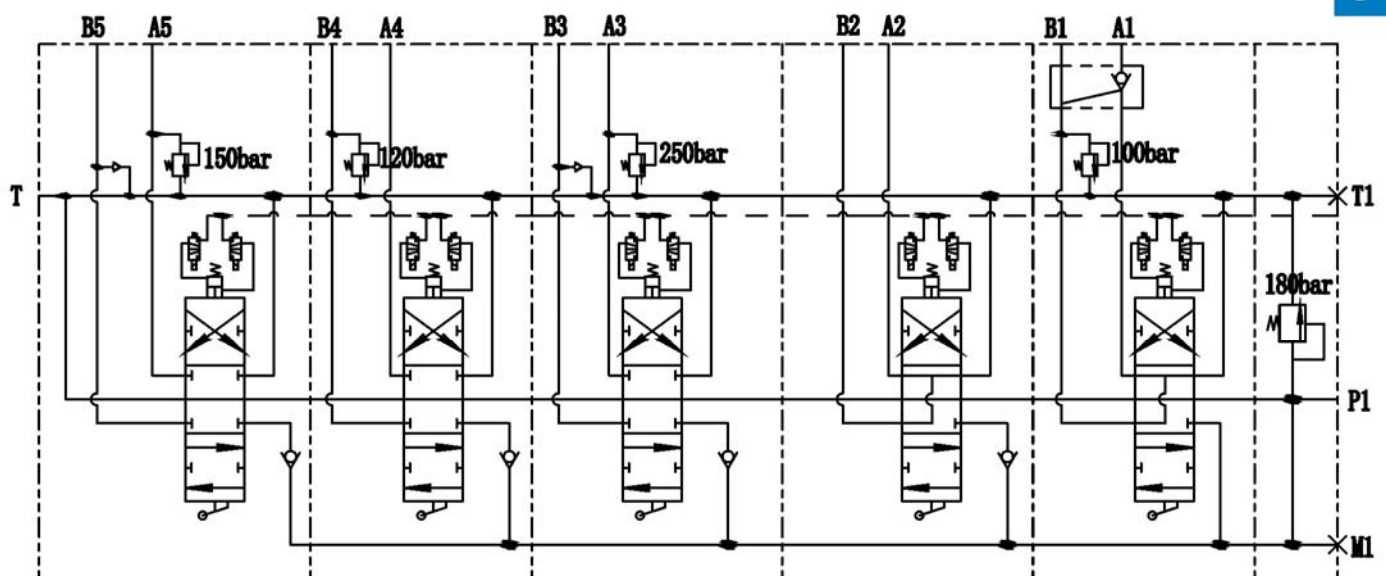
DCV100SP Series Directional Sectional Valve



Technical data

Model	DCV100SP/5
Max. flow rate (l/min)	100
Max. working pressure (bar)	315
Working sections	5
Spool stroke (mm)	+6 ~ -6
Hydraulic fluid	Mineral oil
Temperature range (°C)	-20 to +80
Recommended filtration (μm)	≤10

Hydraulic schematic diagram



A

B

C

D

E

F

G

H

I

J

K

L

M

N

O

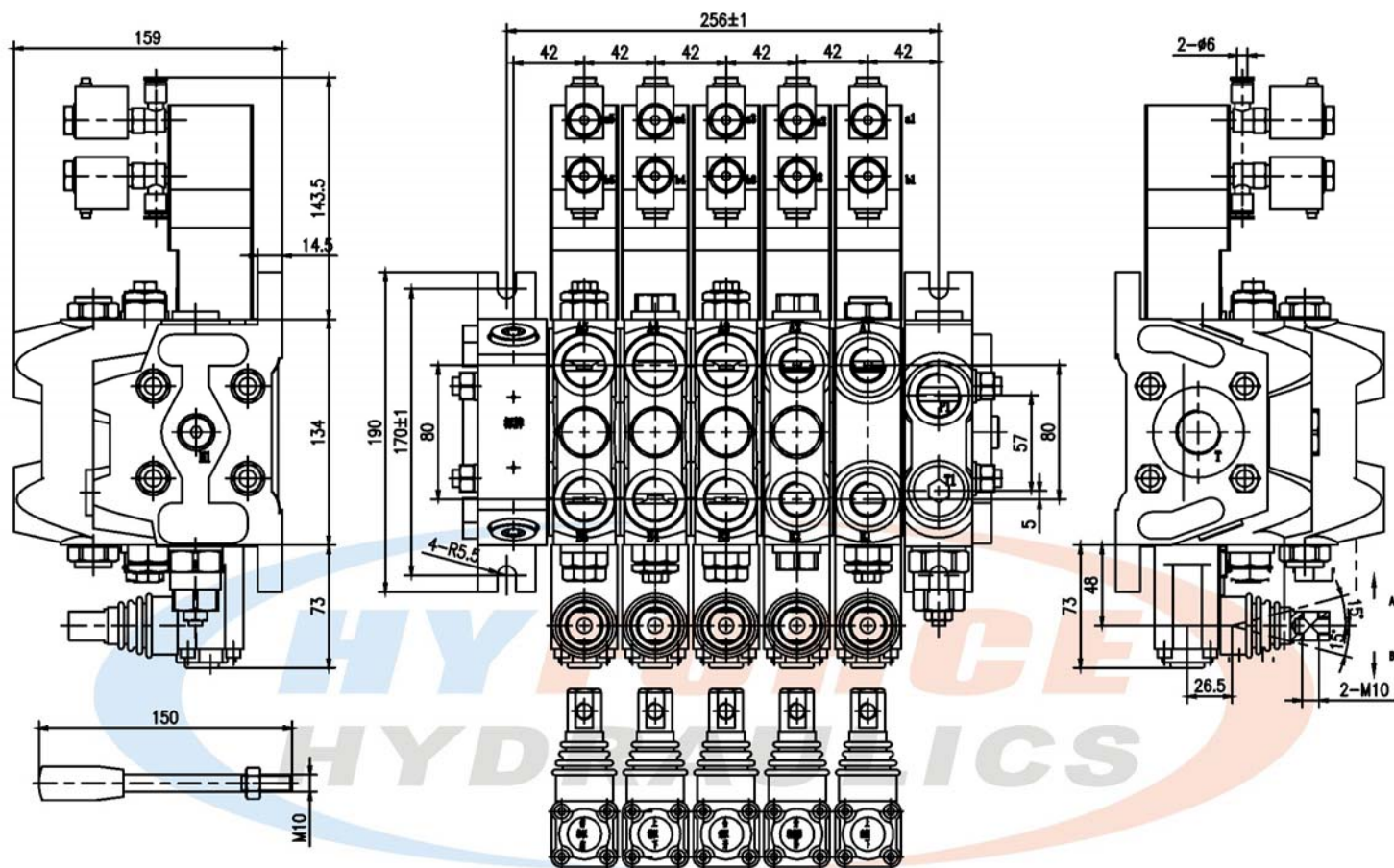
P15



Construction Machinery Hydraulic Valve Series

DCV100SP Series Directional Sectional Valve

Unit: mm



P16

Oil port	Size
A*, B*	BSP1/2"
P1, T*	BSP3/4"
M1	BSP1/4"

Air port	Size
a*, b*	BSP1/8"

Construction Machinery Hydraulic Valve Series

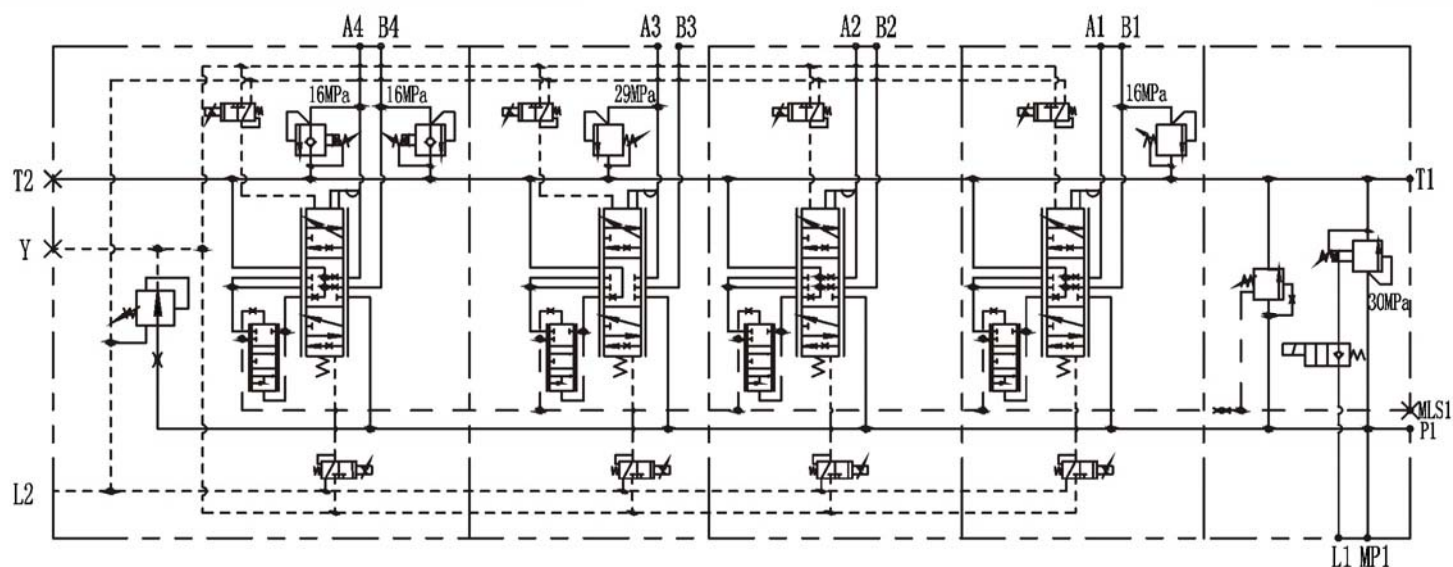
DCV120SE Series Proportional Directional Sectional Valve



Technical data

Model	DCV120SE/4
Max. flow rate (l/min)	120
Max. working pressure (bar)	315
Working sections	4
Solenoid voltage	DC24V
Resistance@20°C (Ω)	20.8±5%
Control current (mA)	250 ~ 750
Spool stroke (mm)	+7 ~ -7
Hydraulic fluid	Mineral oil
Temperature range (°C)	-20 to +80
Recommended filtration (μm)	≤10

Hydraulic schematic diagram



A

B

C

D

E

F

G

H

I

J

K

L

M

N

O

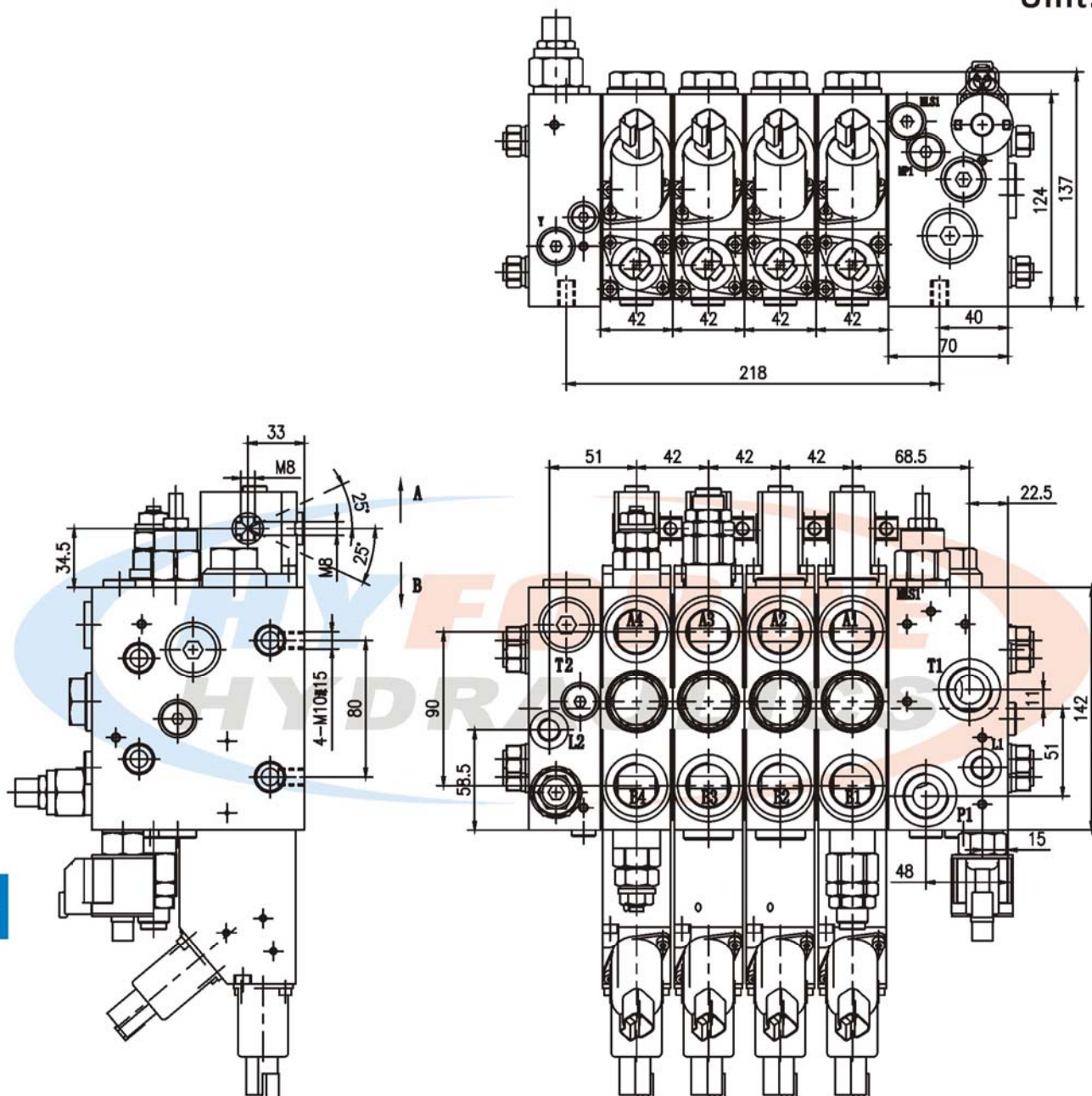
P17



Construction Machinery Hydraulic Valve Series

DCV120SE Series Proportional Directional Sectional Valve

Unit: mm



P18

Oil port	Size
P1, T1, A*, B*	BSP3/4"
T2	BSP1/2"
MP1, MLS1, L*, Y	BSP1/4"

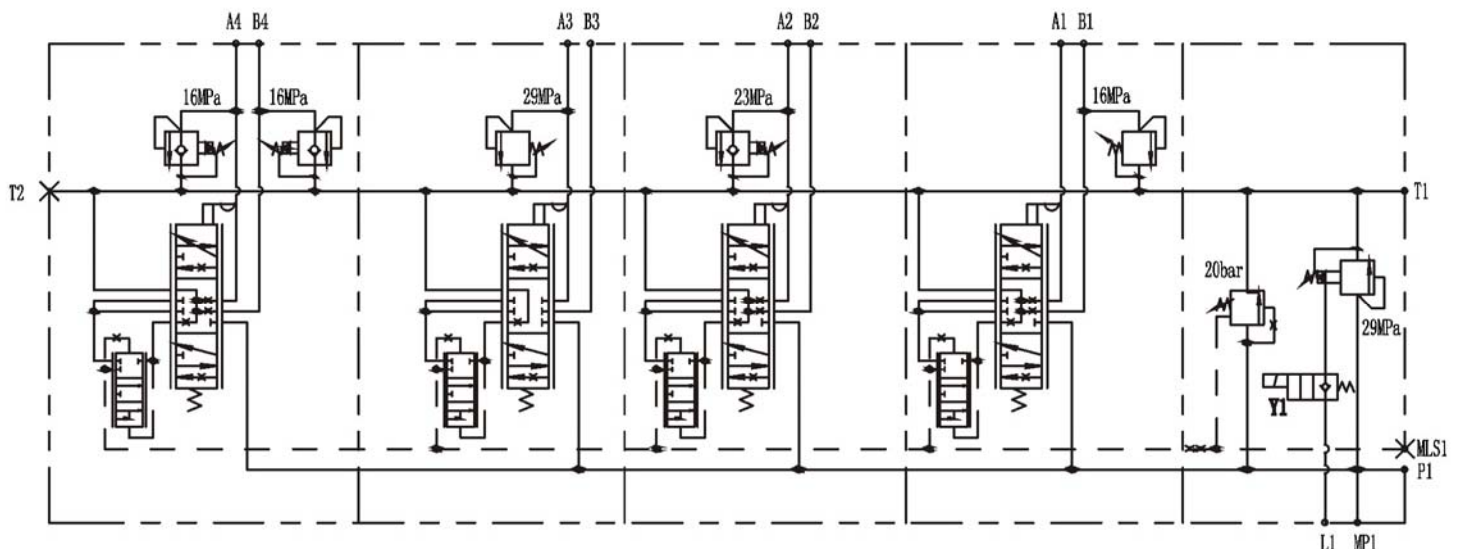
Construction Machinery Hydraulic Valve Series

MDCV120S Series Proportional Directional Sectional Valve

Technical data

Model	MDCV120S/4
Max. flow rate (l/min)	120
Max. working pressure (bar)	315
Working sections	4
Spool stroke (mm)	+7 ~ -7
Hydraulic fluid	Mineral oil
Temperature range (°C)	-20 to +80
Recommended filtration (μm)	≤10

Hydraulic schematic diagram



A

B

C

D

E

F

G

H

I

J

K

L

M

N

O

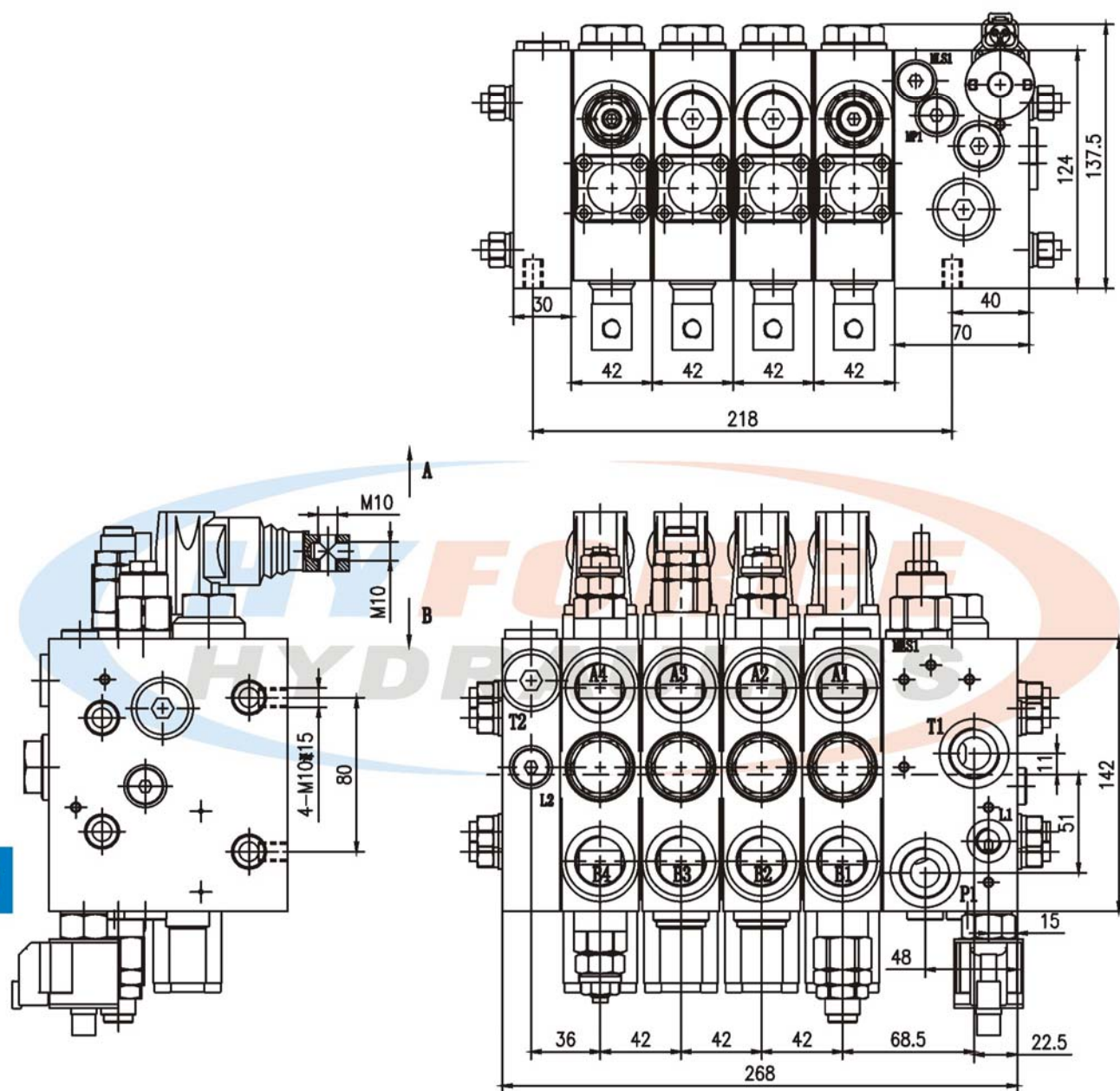
P19



Construction Machinery Hydraulic Valve Series

MDCV120S Series Proportional Directional Sectional Valve

Unit: mm



Oil port	Size
P1, T1, A*, B*	BSP3/4"
T2	BSP1/2"
MP1, MLS1, L*, Y	BSP1/4"

Construction Machinery Hydraulic Valve Series

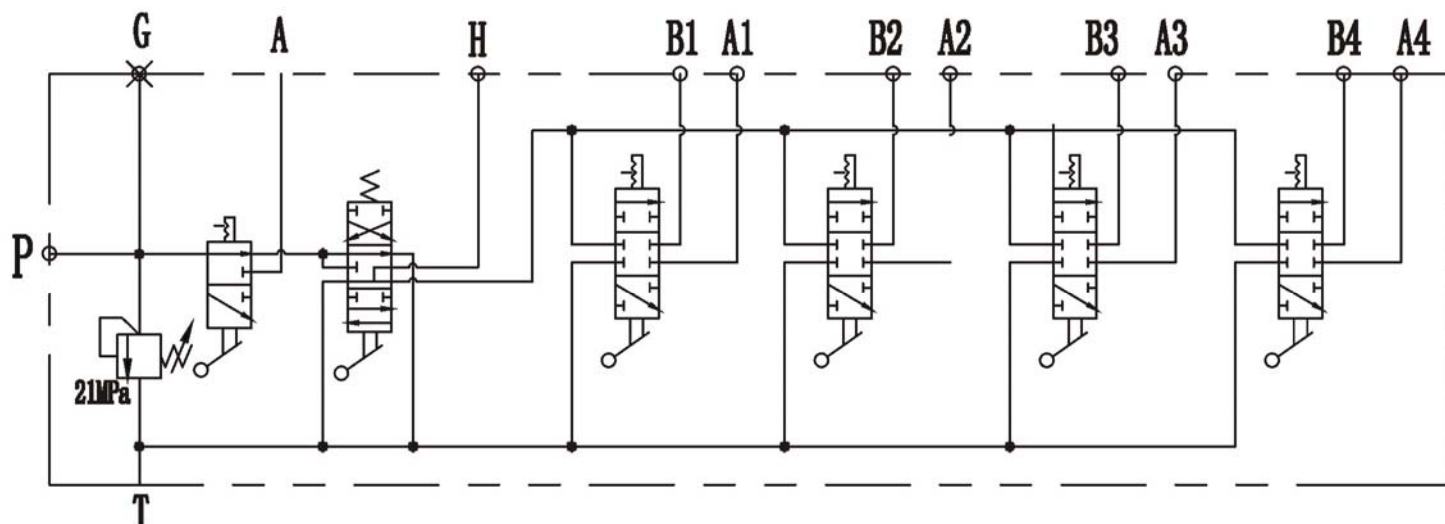
QYZTF-S10C Series Directional Monoblock Valve



Technical data

Model	QYZTF-S10C
Max. flow rate (l/min)	60
Max. working pressure (bar)	315
Allowable backpressure (bar)	20
Working sections	4
Spool stroke (mm)	+5 ~ -5
Hydraulic fluid	Mineral oil
Temperature range (°C)	-20 to +80
Recommended filtration (μm)	≤10

Hydraulic schematic diagram



A

B

C

D

E

F

G

H

I

J

K

L

M

N

O

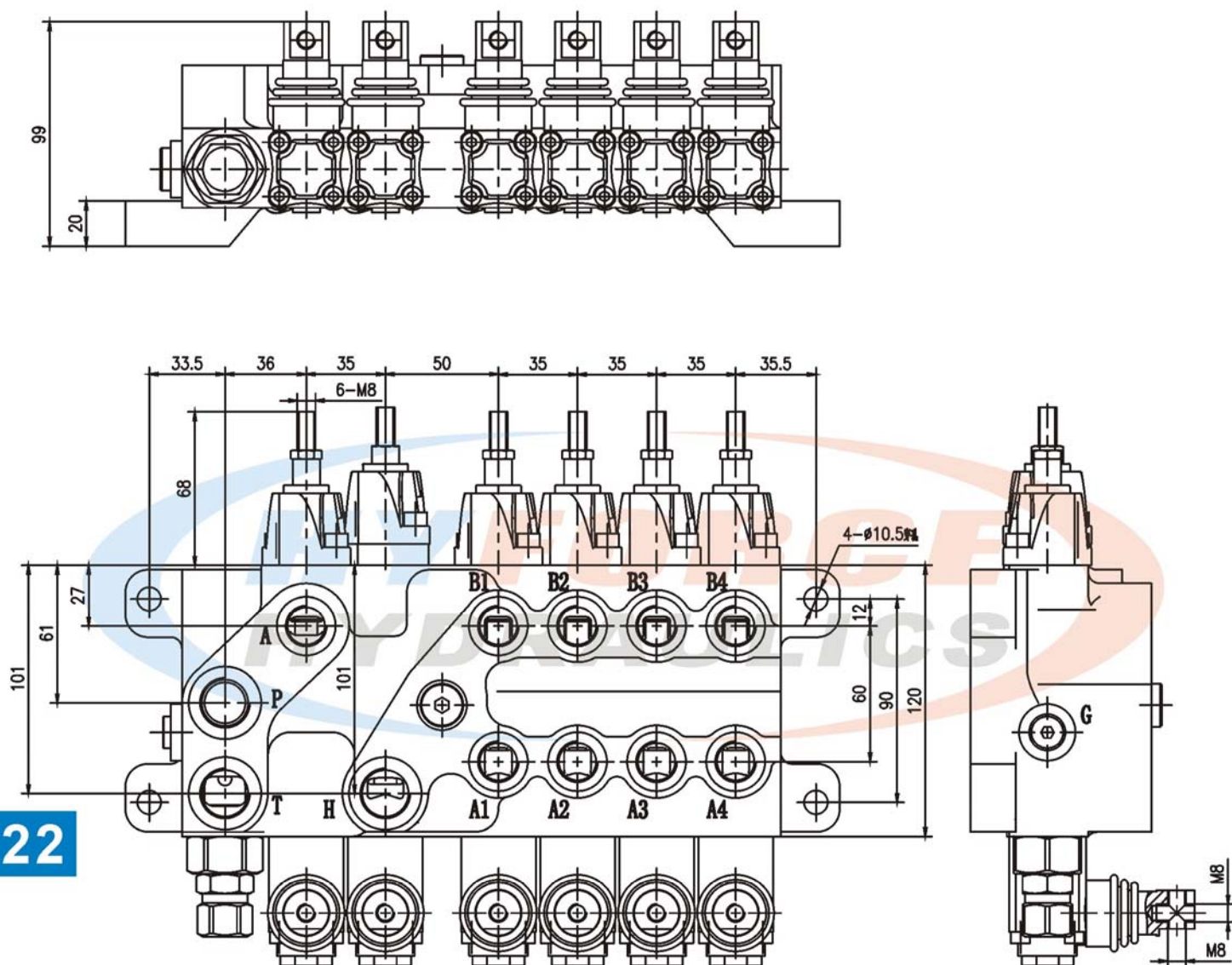
P21



Construction Machinery Hydraulic Valve Series

QYZTF-S10C Series Directional Monoblock Valve

Unit: mm



Oil port	Size
A*, B*	M18X1.5
P, T, H	M22X1.5
G	M10X1.0

Construction Machinery Hydraulic Valve Series

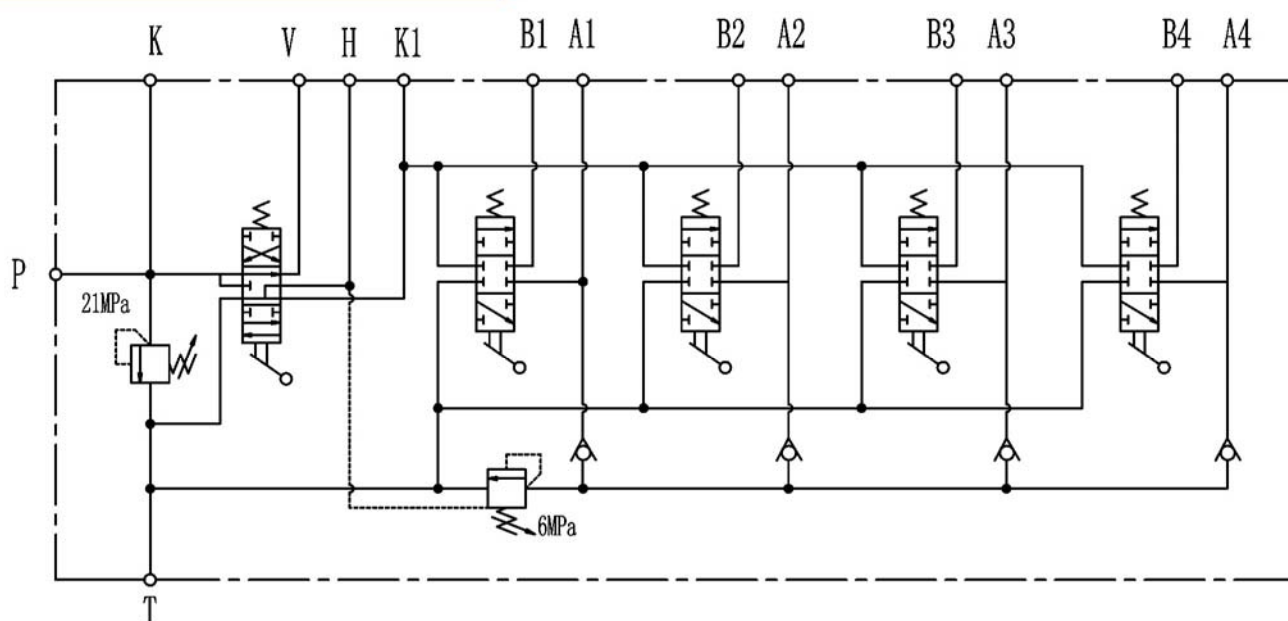
QYZTF-S10D Series Directional Monoblock Valve



Technical data

Model	QYZTF-S10D
Max. flow rate (l/min)	80
Max. working pressure (bar)	315
Allowable backpressure (bar)	20
Working sections	4
Spool stroke (mm)	+5 ~ -5
Hydraulic fluid	Mineral oil
Temperature range (°C)	-20 to +80
Recommended filtration (μm)	≤10

Hydraulic schematic diagram



A

B

C

D

E

F

G

H

I

J

K

L

M

N

O

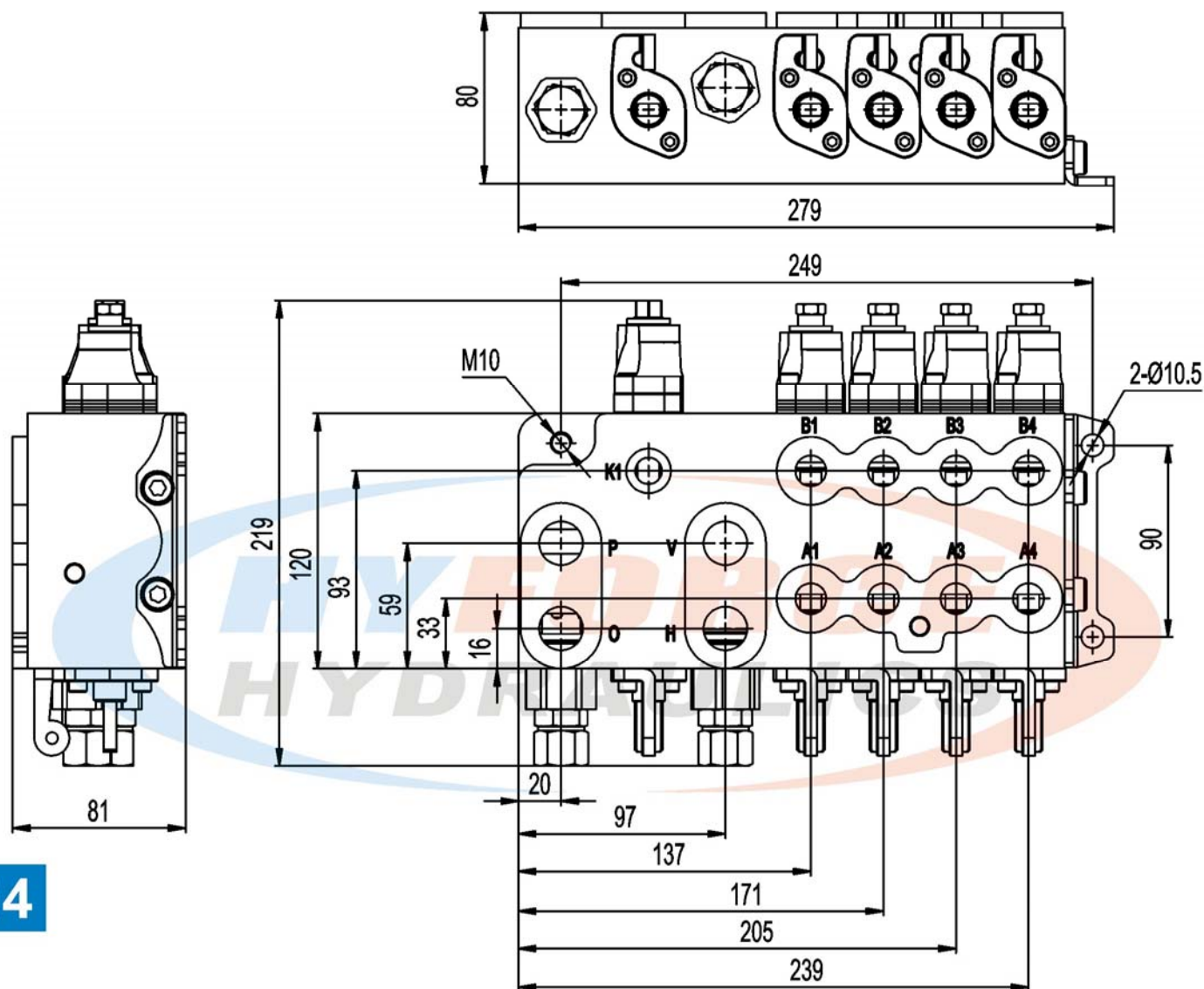
P23



Construction Machinery Hydraulic Valve Series

QYZTF-S10D Series Directional Monoblock Valve

Unit: mm



Oil port	Size
A*, B*, K*	M16X1.5
P, O, H, V	M22X1.5

Construction Machinery Hydraulic Valve Series

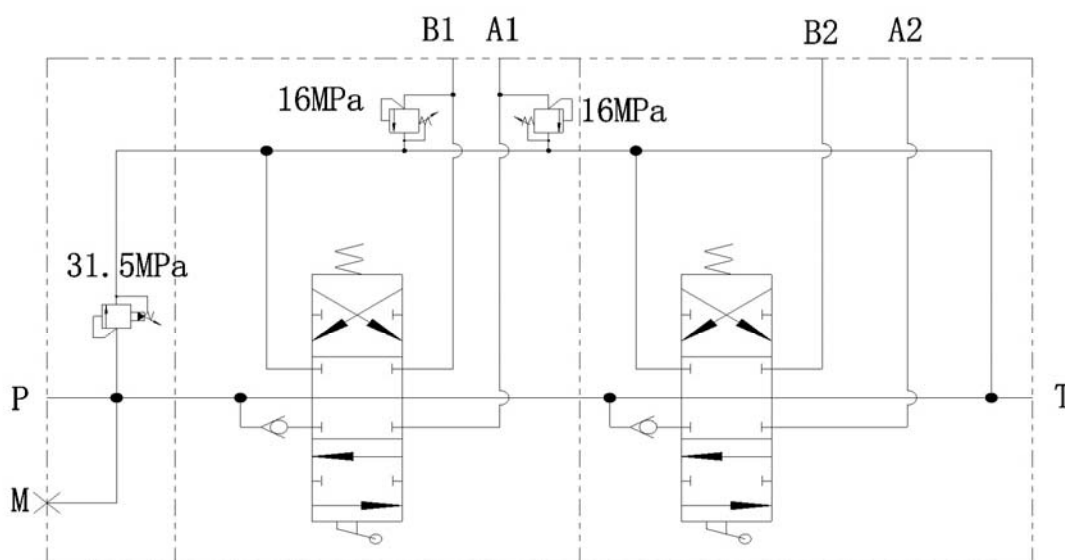
YZ15 Series Directional Sectional Valve



Technical data

Model	YZ15
Max. flow rate (l/min)	60
Max. working pressure (bar)	315
Working sections	2
Hydraulic fluid	Mineral oil
Temperature range (°C)	-20 to +80
Recommended filtration (μm)	≤10

Hydraulic schematic diagram



A

B

C

D

E

F

G

H

I

J

K

L

M

N

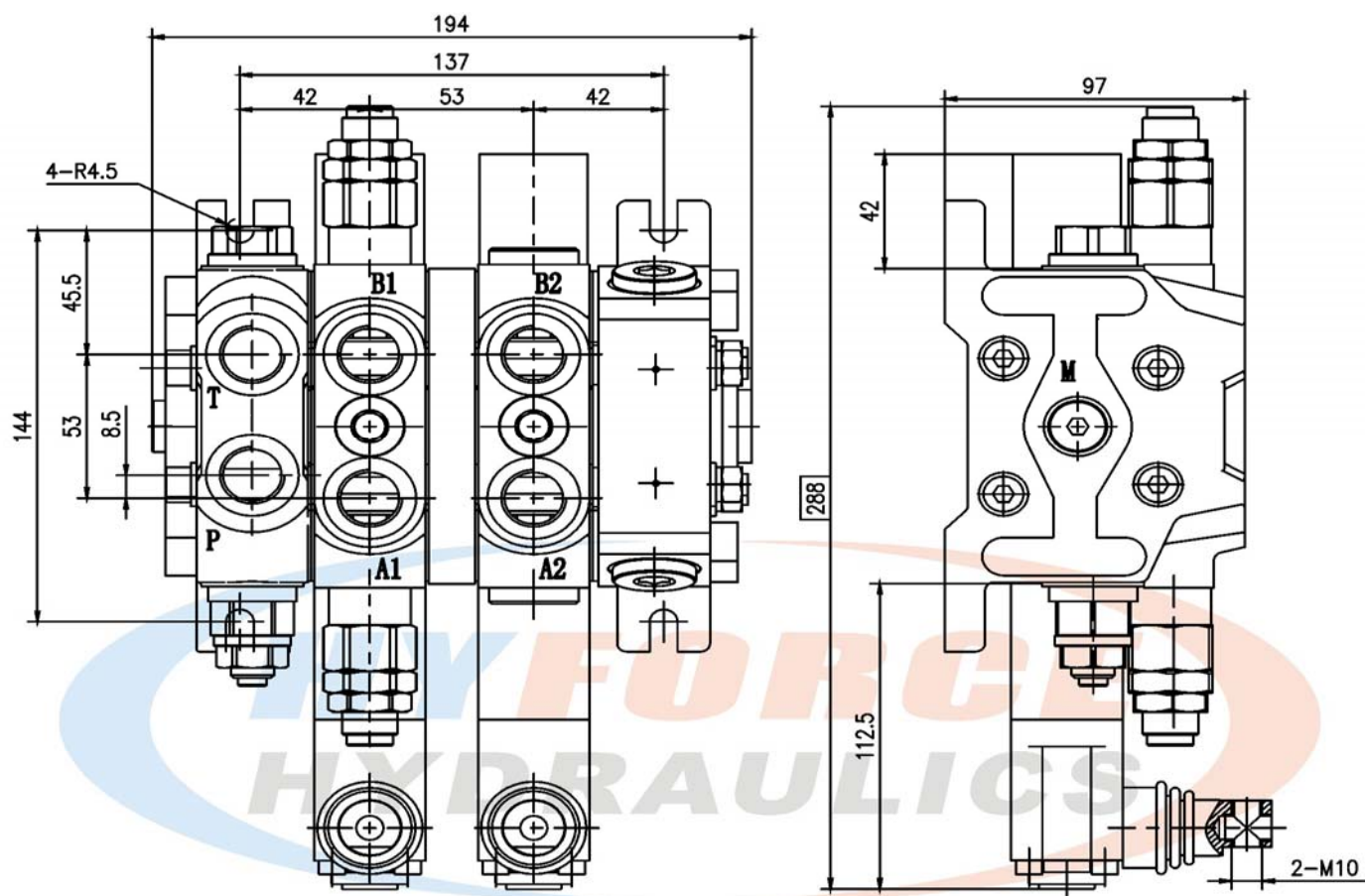
O

P25

Construction Machinery Hydraulic Valve Series

YZ15 Series Directional Sectional Valve

Unit: mm



P26

Oil port	Size
P, T, A*, B*	BSP1/2"
M	BSP1/4"

Construction Machinery Hydraulic Valve Series

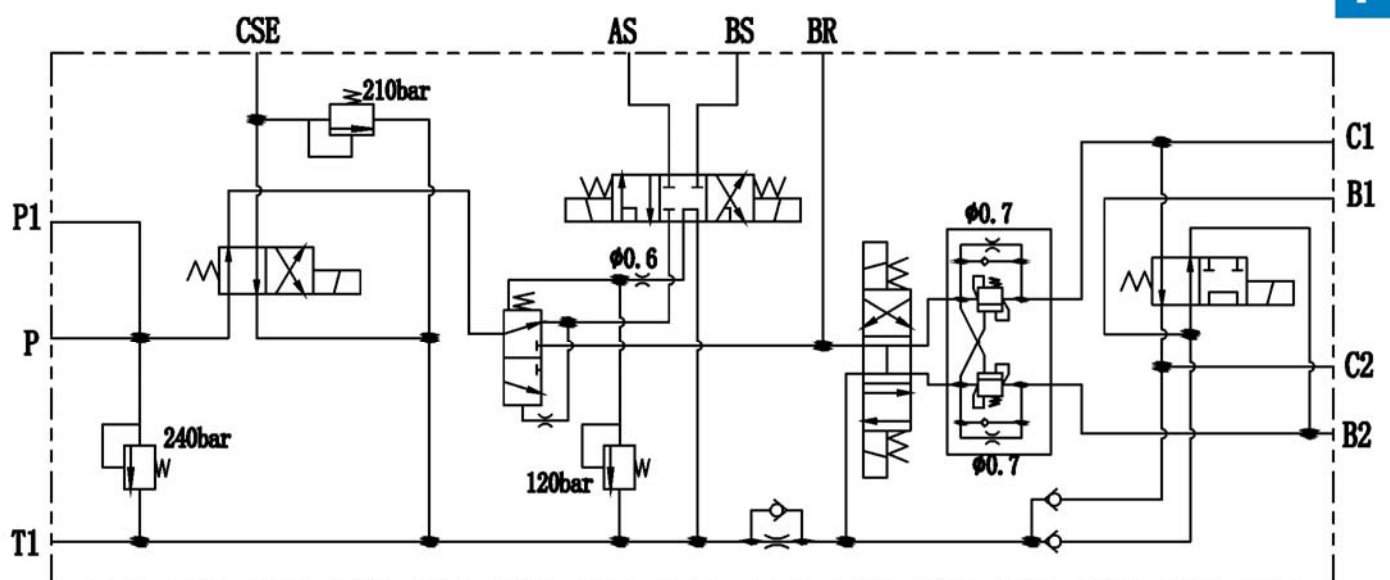
SJC Series Directional Monoblock Valve



Technical data

Model	SJC
Max. flow rate (l/min)	20
Max. working pressure (bar)	250
Solenoid voltage	DC12V/DC24V
Hydraulic fluid	Mineral oil
Temperature range (°C)	-20 to +80
Recommended filtration (µm)	≤10

Hydraulic schematic diagram

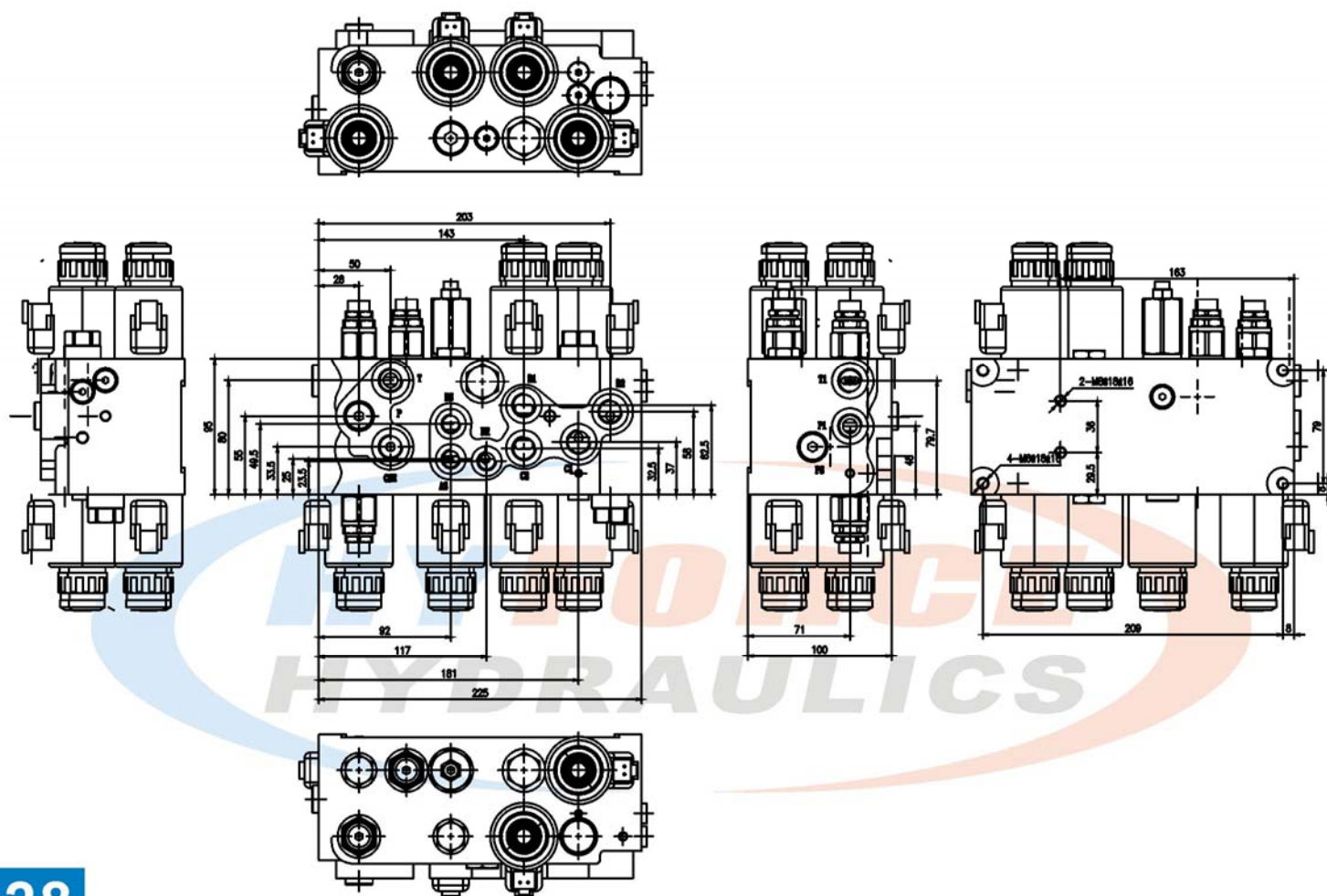




Construction Machinery Hydraulic Valve Series

SJC Series Directional Monoblock Valve

Unit: mm



Oil port	Size
PS, AS, BS, BR, P	BSP1/4"
P1, T*, B*, C*, CSE	BSP3/8"

P28

Construction Machinery Hydraulic Valve Series

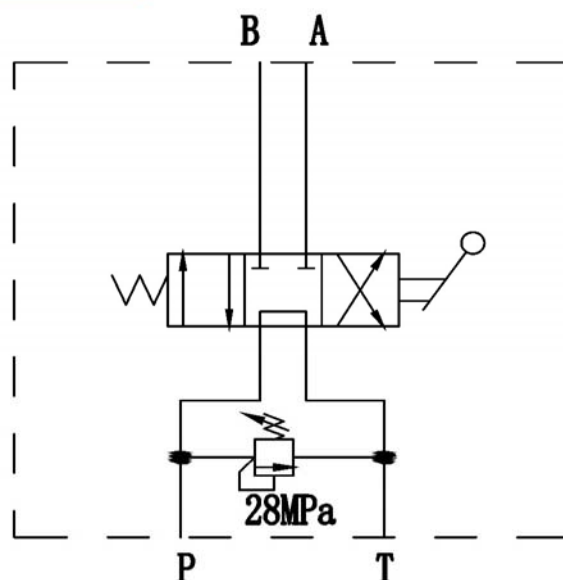
DMD-35 Series Directional Control Valve



Technical data

Model	DMD-35
Max. flow rate (l/min)	35
Max. working pressure (bar)	240
Hydraulic fluid	Mineral oil
Temperature range (°C)	-20 to +80
Recommended filtration (µm)	≤10

Hydraulic schematic diagram



A

B

C

D

E

F

G

H

I

J

K

L

M

N

O

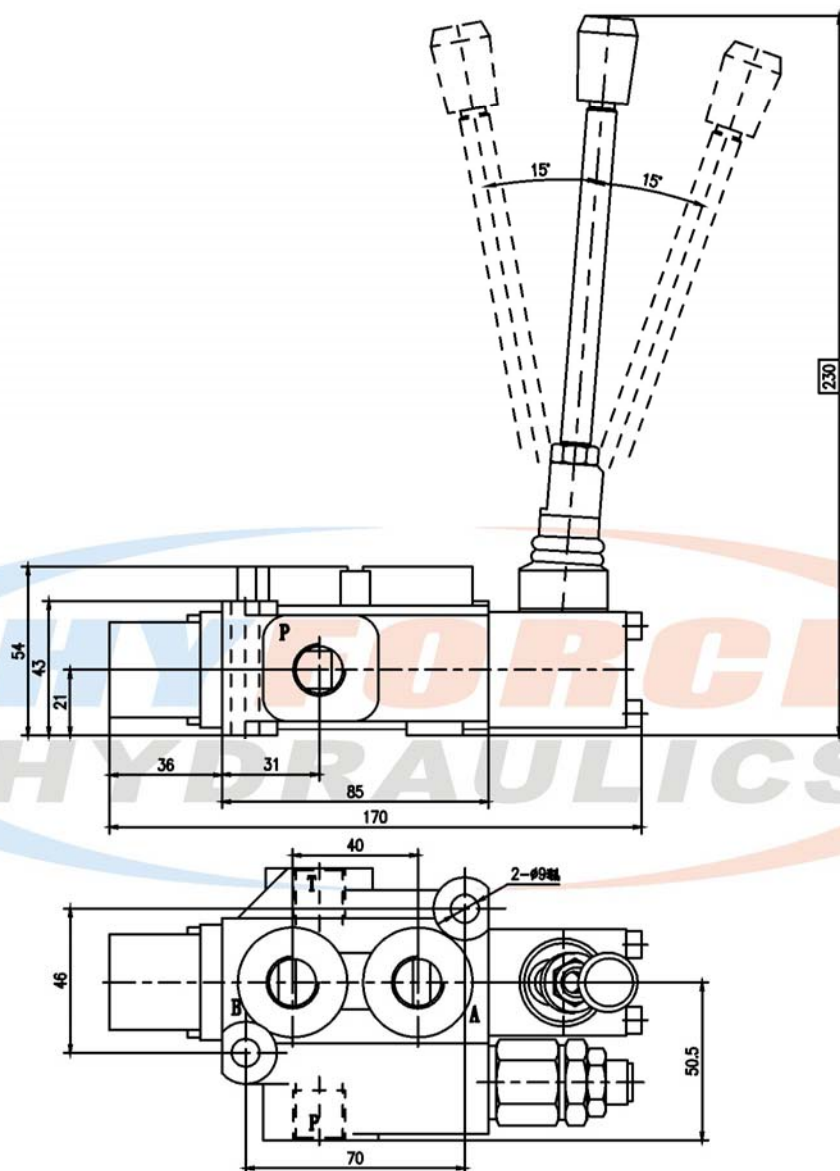
P29



Construction Machinery Hydraulic Valve Series

DMD-35 Series Directional Control Valve

Unit: mm



Oil port	Size
P, T, A, B	BSP3/8"

P30

Construction Machinery Hydraulic Valve Series

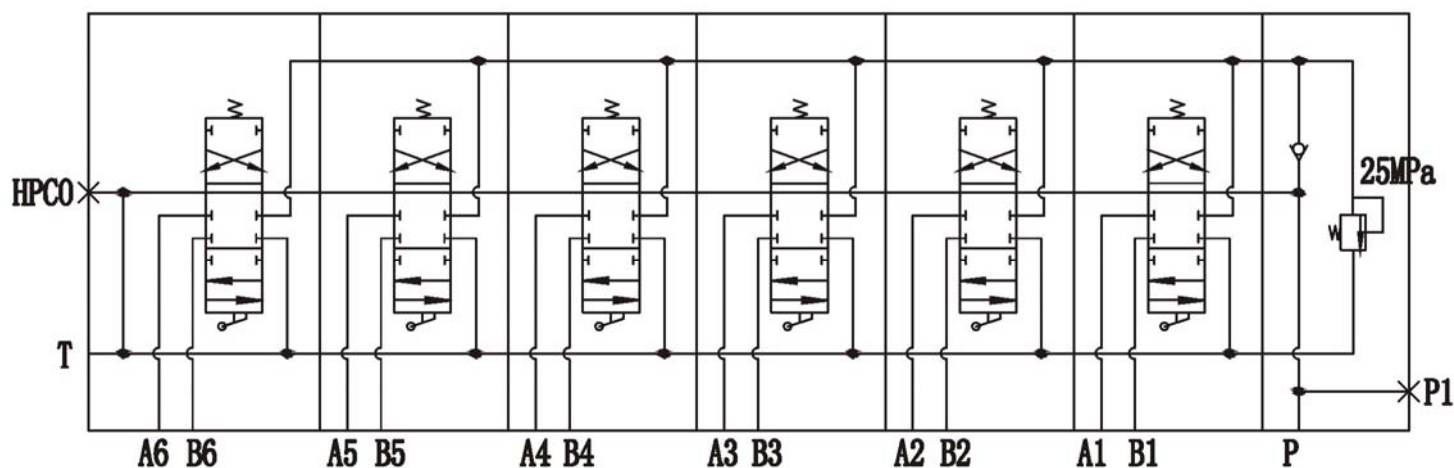
D10/6 Series Directional Monoblock Valve



Technical data

Model	D10/6
Max. flow rate (l/min)	55
Max. working pressure (bar)	315
Working sections	6
Spool stroke (mm)	+5 ~ -5
Hydraulic fluid	Mineral oil
Temperature range (°C)	-20 to +80
Recommended filtration (μm)	≤10

Hydraulic schematic diagram



A

B

C

D

E

F

G

H

I

J

K

L

M

N

O

P31



Unit: mm

Oil port	Size
P1, A*, B*	BSP3/8"
T*, HPCO	BSP1/2"

P32

Construction Machinery Hydraulic Valve Series

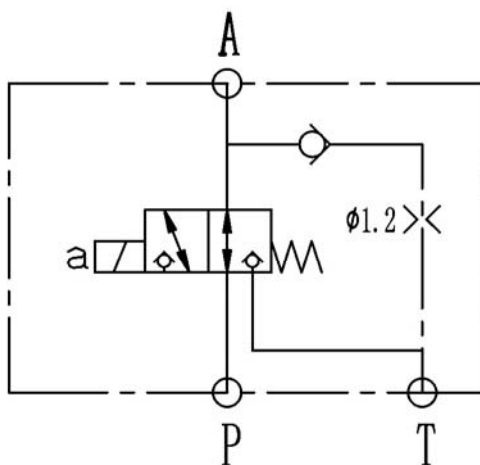
AS320A Series Intergrated Valve



Technical data

Model	AS320A
Max. flow rate (l/min)	60
Max. working pressure (bar)	350
Allowable backpressure (bar)	20
Solenoid voltage	DC12V/DC24V
Hydraulic fluid	Mineral oil
Temperature range (°C)	-20 to +70
Recommended filtration (µm)	≤10

Hydraulic schematic diagram



A

B

C

D

E

F

G

H

I

J

K

L

M

N

O

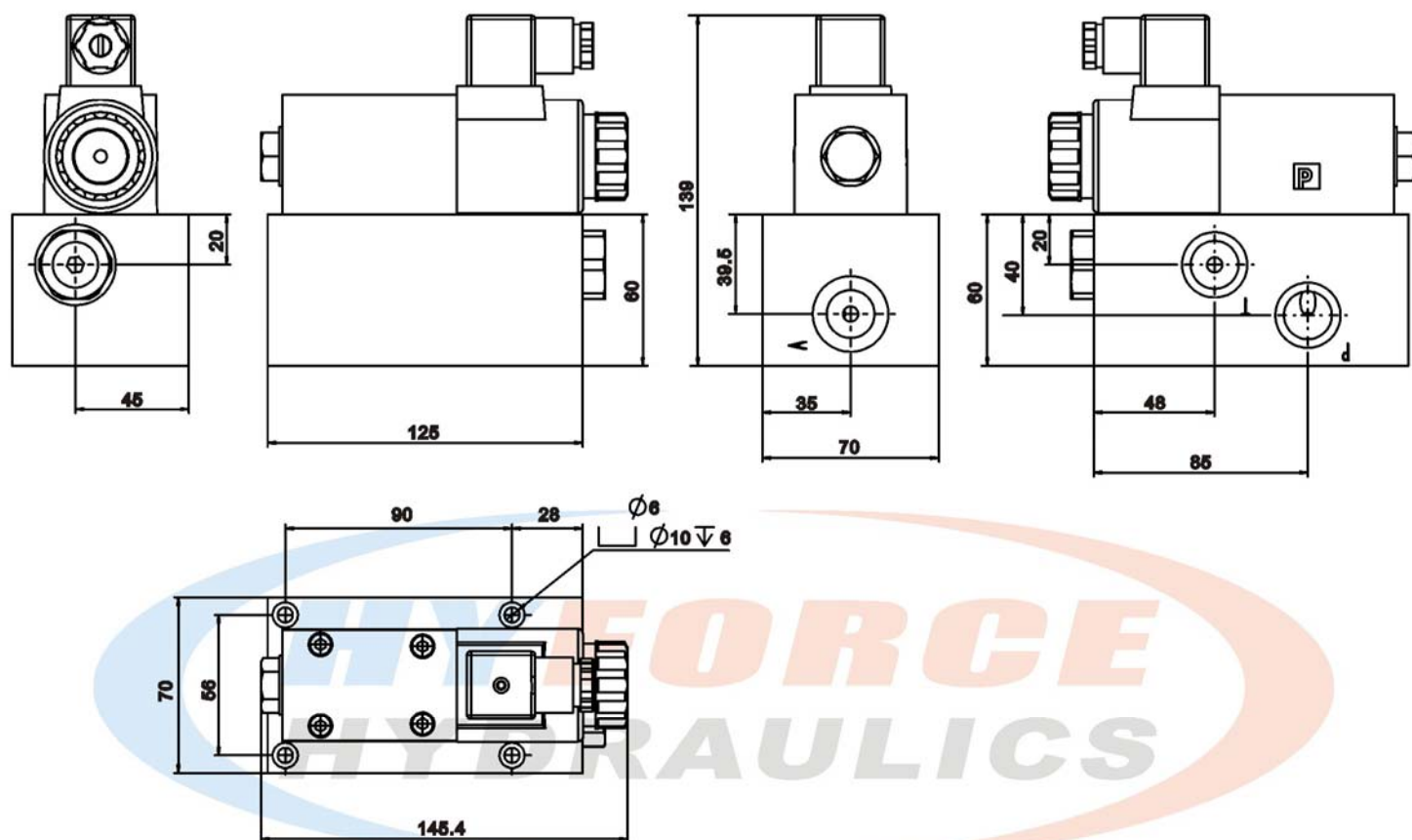
P33



Construction Machinery Hydraulic Valve Series

AS320A Series Intergrated Valve

Unit: mm



P34

Oil port	Size
P, T, A, B	BSP1/4"

Construction Machinery Hydraulic Valve Series

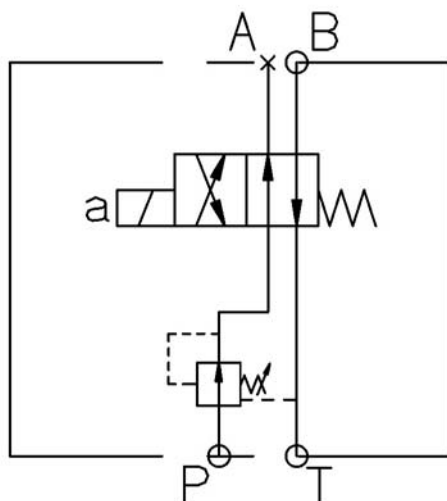
XZ320D Series Intergrated Valve



Technical data

Model	XZ320D
Max. flow rate (l/min)	30
Max. working pressure (bar)	250
Allowable backpressure (bar)	20
Solenoid voltage	DC12V/DC24V
Hydraulic fluid	Mineral oil
Temperature range (°C)	-20 to +80
Recommended filtration (μm)	≤10

Hydraulic schematic diagram



A

B

C

D

E

F

G

H

I

J

K

L

M

N

O

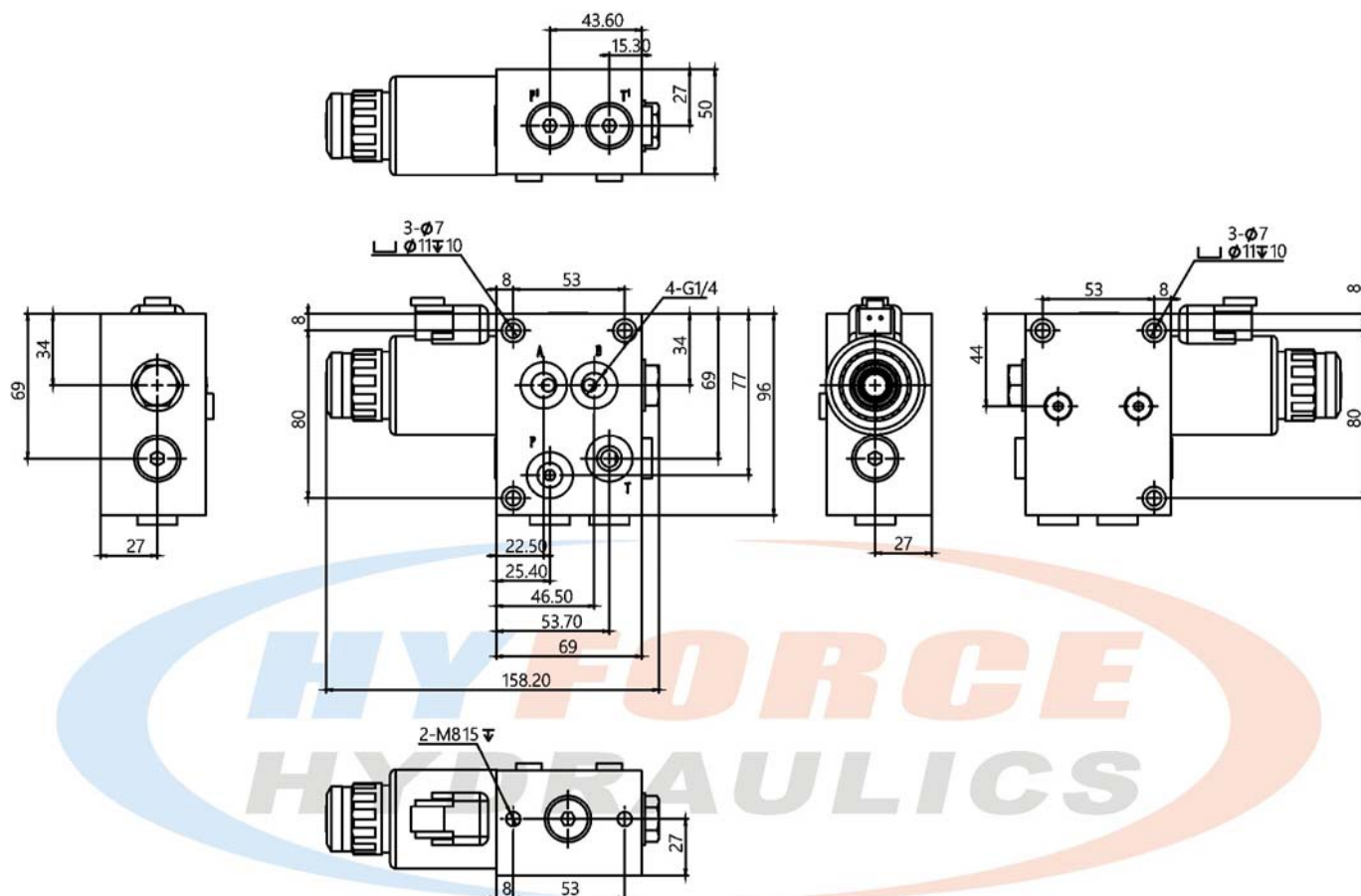
P35



Construction Machinery Hydraulic Valve Series

XZ320D Series Intergrated Valve

Unit: mm

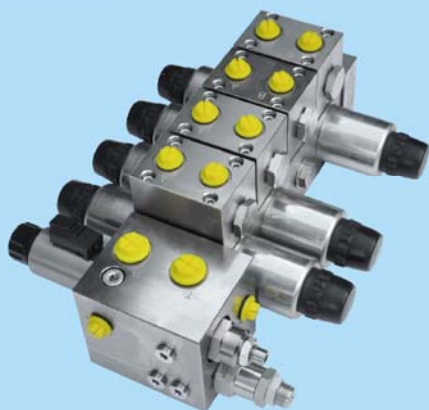


P36

Oil port	Size
P, T, A, B	BSP1/4"

Construction Machinery Hydraulic Valve Series

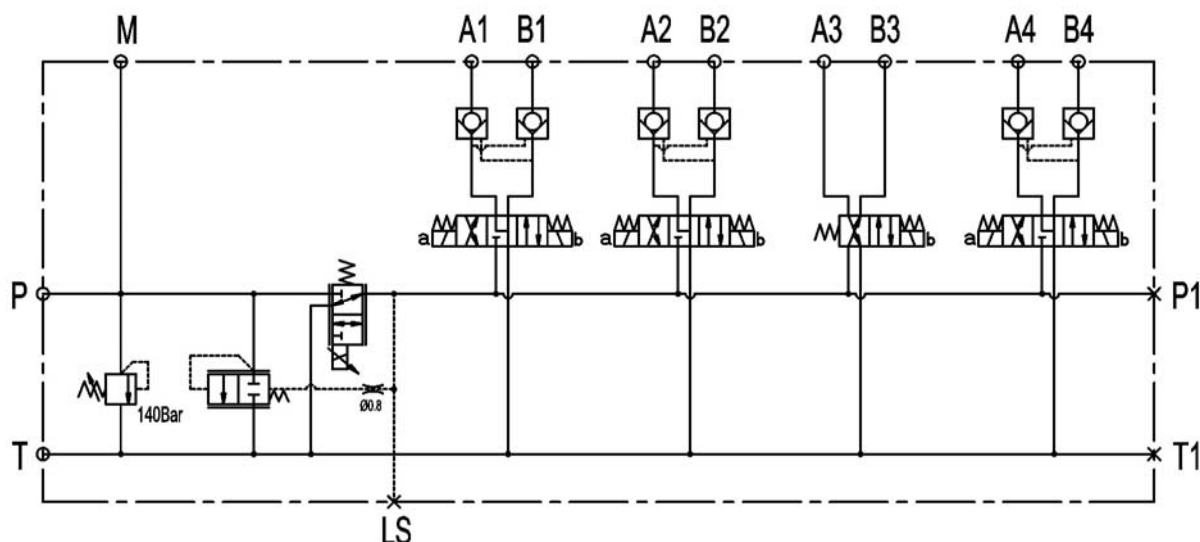
DFK Series Intergrated Valve



Technical data

Model	DFK
Max. flow rate (l/min)	30
Max. working pressure (bar)	250
Allowable backpressure (bar)	20
Solenoid voltage	DC12V/DC24V
Hydraulic fluid	Mineral oil
Temperature range (°C)	-20 to +80
Recommended filtration (µm)	≤10

Hydraulic schematic diagram



A

B

C

D

E

F

G

H

I

J

K

L

M

N

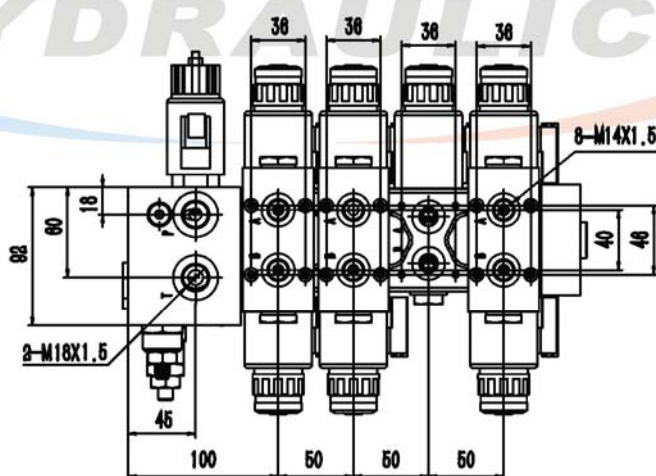
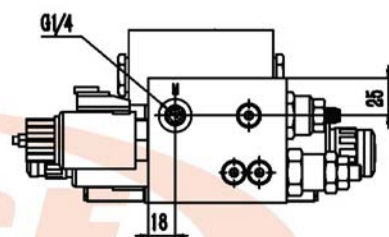
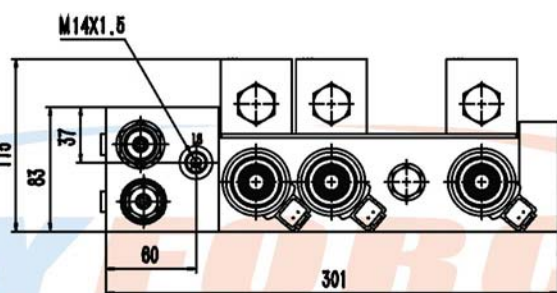
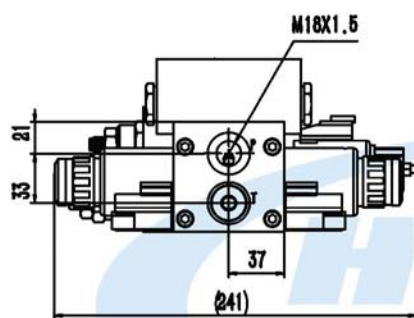
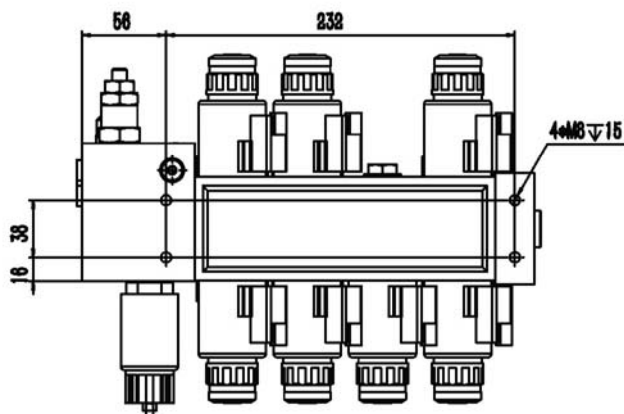
O

P37

Construction Machinery Hydraulic Valve Series

DFK Series Intergrated Valve

Unit: mm



Oil port	Size
A*, B*, LS	M14X1.5
P*, T*	M18X1.5

Oil port	Size
M	BSP1/4"

Construction Machinery Hydraulic Valve Series

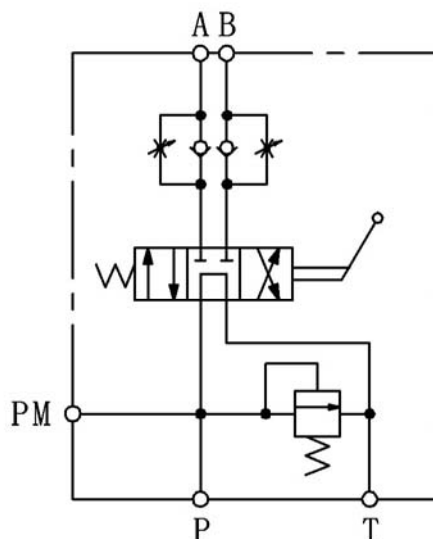
PQB Series Intergrated Valve



Technical data

Model	PQB
Max. flow rate (l/min)	40
Max. working pressure (bar)	315
Hydraulic fluid	Mineral oil
Temperature range (°C)	-20 to +80
Recommended filtration (µm)	≤10

Hydraulic schematic diagram



A

B

C

D

E

F

G

H

I

J

K

L

M

N

O

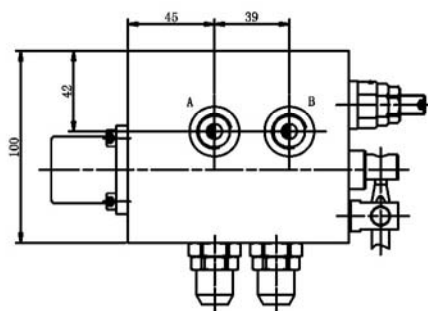
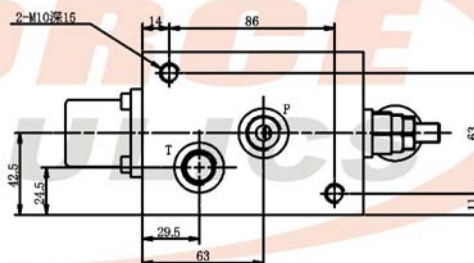
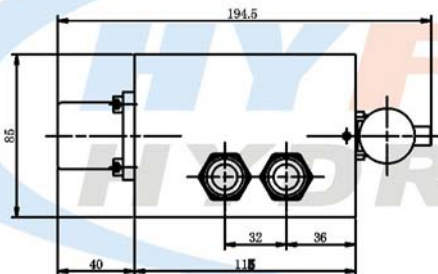
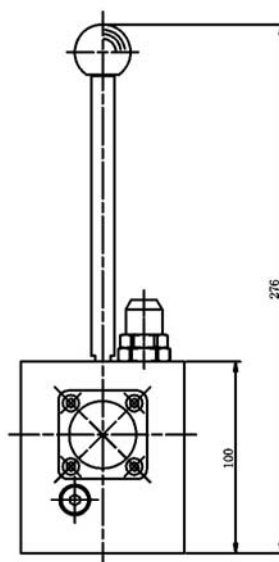
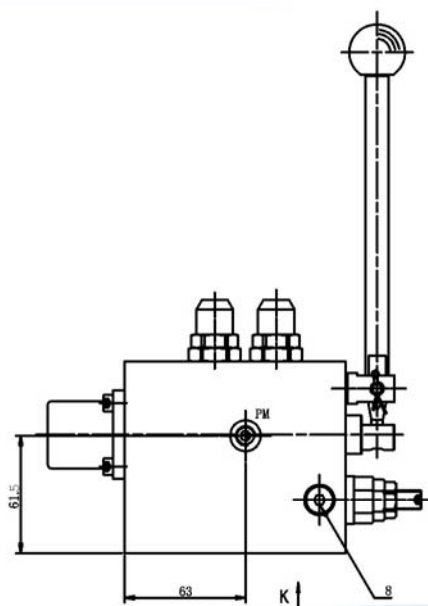
P39



Construction Machinery Hydraulic Valve Series

PQB Series Intergrated Valve

Unit: mm



Oil port	Size
P, T, A, B	M18X1.5
PM	M10X1

P40