

OWNER'S GUIDE

3P90M HYBRID STEPPER MOTOR DRIVER

3P90M
STEPPER MOTOR DRIVER



I.CH

©2020 by I.CH Motion Co.,Ltd..
All Rights Reserved

TECHNICAL DOCUMENT

Content

1. Introduction	3
2. Feature	3
3. Specification.....	4
4. Operating Environment and Parameters	4
5. Definition of Pin Signal	5
6. Connections to Controller	6
7. Connecting the Motor	7
8. Power Supply Selection	7
9. Output Current and Microstep Resolution Settings.....	8
10. Wiring Notes	10
11. Typical Connection	10
12. Sequence Chart of Control Signals.....	11
13. Protection Functions.....	12
14. Frequently Asked Questions	13
15. Application	13

Note:if you have any problems,please
email sales@ichmo.com to to contact us.



TECHNICAL DOCUMENT

1. Introduction

The 3 phase driver(3P90M) that I.CH manufactures and supplies are low noise and quiet. It can be used in many machines, such as CNC machine.

2. Feature

- Voltage can up to 220VAC (310VDC)
- Pulse frequency up to 250 kHz
- High cost-effective, ultra-noise
- Output current up to 8.2A(5.86 ARMS)
- High performance, low price, low noise, high torque at high speed.
- Small size for easy mounting
- 16 microstep resolutions selectable
- TTL compatible input signal
- The Current automatically halved at rest
- Optical isolation differential signal input.

TECHNICAL DOCUMENT

3. Specification

Parameters	3P24M			
	Min	Typical	Max	Unit
Output current	2.0 (1.41A RMS)	-	8.2(5.86 RMS)	A
Supply voltage	90(126)	100(140)	150(210)	VDC
Logic signal current	7	10	16	mA
Pulse input frequency	0	-	200	kHz
Isolation resistance	500	-	-	MΩ

4. Operating Environment and Parameters

Cooling		Natural cooling or forced convection
Operating Environment	Environment	Avoid dust, oil frost and corrosive gas
	Ambient Temperature	0°C — 50°C (32°F — 122°F)
	Humidity	40%RH — 90%RH
	Operating Temperature	70°C (158°F) Max
	Vibration	5.9m/s2 Max
Storage Temperature		-20°C — 65°C (-4°F — 149°F)
Weight		Approx. 1.0 kg (35.25 oz)

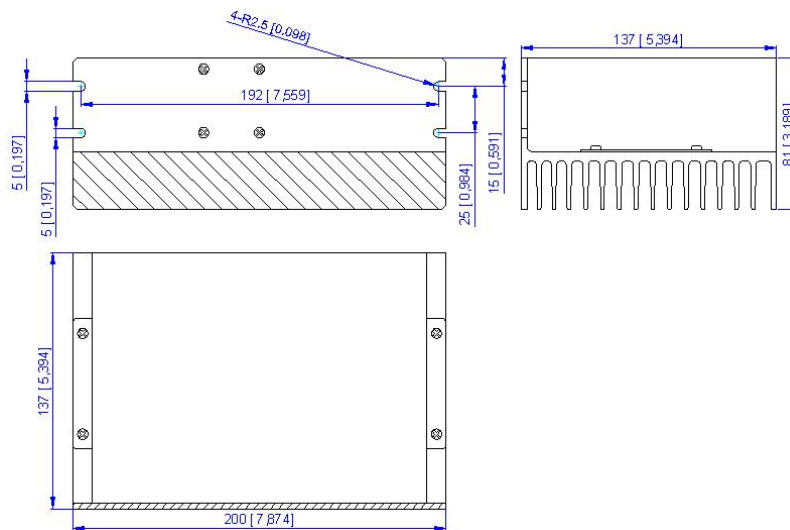


Figure 1: Mechanical Specifications

TECHNICAL DOCUMENT

Elimination of Heat

- Driver's reliable working temperature should be $<70^{\circ}\text{C}$ (158°F), and motor working temperature should be $<80^{\circ}\text{C}$ (176°F);
- Forced cooling the driver if it's necessary.

5. Definition of Pin Signal

The 3L1183M has two connectors, connector P1 for control signals connections, and connector P2 for power and motor connections. The following tables are brief descriptions of the two connectors of the 3L1183M. More detailed descriptions of the pins and related issues are presented in section 4, 5, 9.

Pin Function	Details
PUL+(+5V)	Pulse signal: In single pulse (pulse/direction) mode, this input represents pulse signal, effective for each rising edge; 4-5V when PUL-HIGH, 0-0.5V when PUL-LOW. In double pulse mode (pulse/pulse), this input represents clockwise (CW) pulse, effective for high level. For reliable response, pulse width should be longer than $1.2\mu\text{s}$. Series connect resistors for current-limiting when +12V or +24V used.
PUL-(PUL)	
DIR+(+5V)	DIR signal: In single-pulse mode, this signal has low/high voltage levels, representing two directions of motor rotation; in double-pulse mode (set by inside J1), this signal is counter-clock (CCW) pulse, effective for low level. For reliable motion response, DIR signal should be ahead of PUL signal by $5\mu\text{s}$ at least. 4-5V when DIR-HIGH, 0-0.5V when DIR-LOW.
DIR-(DIR)	
ENA+(+5V)	Enable signal: This signal is used for enabling/disabling the driver. High level (NPN control signal, PNP and Differential control signals are on the contrary, namely Low level for enabling.) for enabling the driver and low level for disabling the driver. Usually left UNCONNECTED (ENABLED).
ENA-(ENA)	
FAULT+	Fault signal positive: FAULT+ is an optocoupler output from open-collector circuit, maximum permitted input voltage is 30VDC; maximum output current 20mA. It generally can be serial connected to PLC input terminal.
FAULT-	Fault signal negative.

TECHNICAL DOCUMENT

Connector P2 Configurations

Pin Function	Details
PE	Ground terminal. Recommend connect this port to the ground for better safety.
AC	AC power supply inputs. Recommend use isolation transformers with theoretical output voltage of 150~220 VAC.
U	Motor phase U
V	Motor phase V
W	Motor phase W

Remark: Please note that motion direction is also related to motor-driver wiring matches.
Exchanging the connections of two phases to the driver will reverse motor motion direction.

6. Connections to Controller

The 3P90M can accept differential and single-ended input signals (including open-collector and PNP output). The 3P90M has 3 optically isolated logic inputs which are located on connector P1 to accept line driver control signals. These inputs are isolated to minimize or eliminate electrical noises coupled onto the drive control signals. Recommend use line driver control signals to increase noise immunity of the driver in interference environments. In the following figures, connections to open-collector and PNP signals are illustrated.

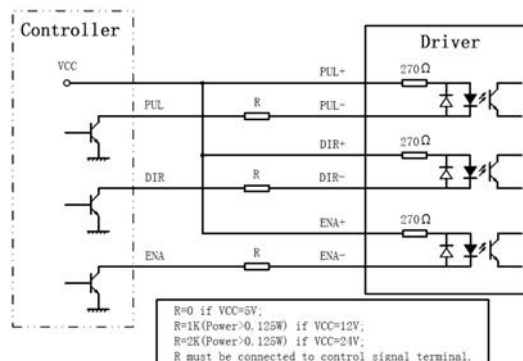


Figure 2: Connections to open-collector signal (common-anode)

TECHNICAL DOCUMENT

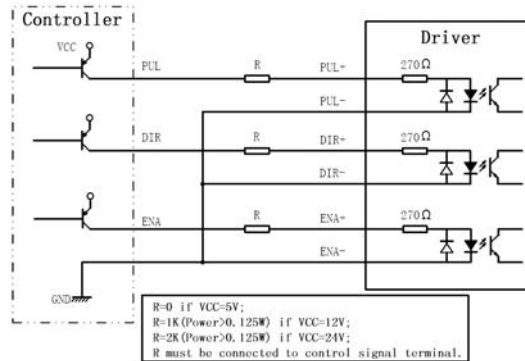


Figure 3: Connections to PNP signal (common-cathode)

7. Connecting the Motor

The connection between the driver and 3-phase stepping motors includes two different kinds of connections, namely delta-connection and star-connection. Using delta-connection, the performances of the motor under high speed condition are better, but the driver current is higher too (about 1.73 times the motor coil current); while using star-connection, the driver current equals to the motor coil current.

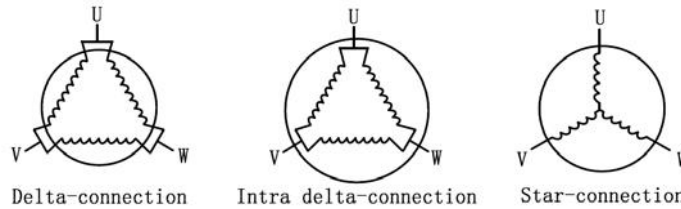


Figure 4: Motor connections

8. Power Supply Selection

The 3P90M can match large and medium size stepping motors (from NEMA size 34 to 43) made by I.CH Motion or other motor manufactures around the world. To achieve good driving performances, it is important to select supply voltage and output current properly. Generally speaking, supply voltage determines the high speed performance of the motor, while output current determines the output torque of the driven motor (particularly at lower speed).

Attention: For safety and to improve reliability, it is recommended to use isolation transformer instead of directly use network source to supply the 3L1183M. Recommend use isolation transformers with theoretical output voltage of 90~150VAC or 126~210VDC, leaving room for power fluctuation and back-EMF. And the power of the isolation transformer should larger than 500 watts.

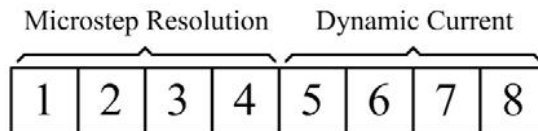
TECHNICAL DOCUMENT

Selecting Supply Voltage

The 3P90M can actually operate within 90~150VAC or 126~210VDC, including power input fluctuation and back EMF voltage generated by motor coils during motor shaft deceleration. Higher supply voltage can increase motor torque at higher speeds, thus helpful for avoiding losing steps. However, higher voltage may cause bigger motor vibration at lower speed, and it may also cause over-voltage protection or even driver damage. Therefore, it is suggested to choose only sufficiently high supply voltage for intended applications, and it is suggested to use power supplies with theoretical output voltage of 150~220VAC or 210~310VDC, leaving room for power fluctuation and back-EMF. If the motion speed requirement is low, it's better to use lower supply voltage to decrease noise, heating and improve reliability.

9. Output Current and Microstep Resolution Settings

This driver uses a 8-bit DIP switch to set microstep resolution, motor operating current and control signal mode as shown in the following figure:



Microstep Resolution Selection

Microstep resolution is set by SW1, 2, 3, 4 of the DIP switch as shown in the following table:

Steps/rev.(for 1.8°motor)	SW1	SW2	SW3	SW4
200	ON	ON	ON	ON
400	OFF	ON	ON	ON
1600	ON	OFF	ON	ON
3200	OFF	OFF	ON	ON
6400	ON	ON	OFF	ON
12800	OFF	ON	OFF	ON
25600	ON	OFF	OFF	ON
500	OFF	OFF	OFF	ON
1000	ON	ON	ON	OFF
1200	OFF	ON	ON	OFF
2000	ON	OFF	ON	OFF
5000	ON	ON	OFF	OFF
6000	OFF	ON	OFF	OFF
8000	ON	OFF	OFF	OFF
10000	OFF	OFF	OFF	OFF

TECHNICAL DOCUMENT


Current Settings

For a given motor, higher driver current will make the motor to output more torque, but at the same time causes more heating in the motor and driver. Therefore, output current is generally set to be such that the motor will not overheat for long time operation. Since parallel and serial connections of motor coils will significantly change resulting inductance and resistance, it is therefore important to set driver output current depending on motor phase current, motor leads and connection methods. Phase current rating supplied by motor manufacturer is important in selecting driver current, however the selection also depends on leads and connections.

The latter four bits (SW5, 6, 7, 8) of the DIP switch are used to set the dynamic current. Select a setting closest to your motor's required current.

Dynamic Current Setting

Peak current (A)	RMS (A)	SW5	SW6	SW7	SW8
2.00A	1.41A	OFF	OFF	OFF	OFF
2.40A	1.70A	OFF	OFF	OFF	ON
2.80A	1.98A	OFF	OFF	ON	OFF
3.20A	2.26A	OFF	OFF	ON	ON
3.60A	2.55A	OFF	ON	OFF	OFF
4.20A	2.97A	OFF	ON	OFF	ON
4.80A	3.39A	OFF	ON	ON	OFF
5.20A	3.68A	OFF	ON	ON	ON
5.60A	3.96A	ON	OFF	OFF	OFF
6.00A	4.24A	ON	OFF	OFF	ON
6.40A	4.53A	ON	OFF	ON	OFF
6.80A	4.81A	ON	OFF	ON	ON
7.20A	5.09A	ON	ON	OFF	OFF
7.60A	5.37A	ON	ON	OFF	ON
8.00A	5.68A	ON	ON	ON	OFF
8.20A	5.80A	ON	ON	ON	ON

 Notes: Due to motor inductance, the actual current in the coil may be smaller than the dynamic current settings, particularly under high speed condition.

TECHNICAL DOCUMENT

Standstill Current

The 3P90M has automatic idle-current reduction function. The current automatically be reduced to 60% of the selected dynamic current setting 0.2 second after the last pulse. Theoretically, this will reduce motor heating to 36% (due to $P=I^2 \cdot R$) of the original value. If the application needs a different standstill current, please contact I.CH Motion.

10. Wiring Notes

- In order to improve anti-interference performance of the driver, it is recommended to use twisted pair shield cable.
- To prevent noise incurred in pulse/dir signal, pulse/direction signal wires and motor wires should not be tied up together. It is better to separate them by at least 10 cm, otherwise the disturbing signals generated by motor will easily disturb pulse direction signals, causing motor position error, system instability and other failures.
- If a power supply serves several drivers, separately connecting drivers is recommended instead of daisy-chaining.
- It is prohibited to pull and plug connector P2 while the driver is powered ON, because there is high current flowing through motor coils (even when motor is at standstill). Pulling or plugging connector P2 with power on will cause extremely high back-EMF voltage surge, which may damage the driver.

11. Typical Connection

A complete stepping system should include stepping motor, stepping driver, power supply and controller (pulse generator). A typical connection is shown as figure 5.

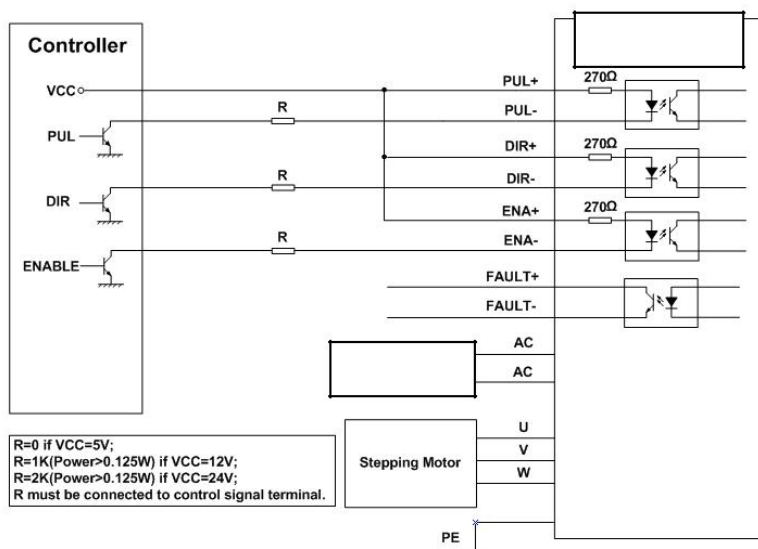


Figure 5: Typical connection

TECHNICAL DOCUMENT

12. Sequence Chart of Control Signals

In order to avoid some fault operations and deviations, PUL, DIR and ENA signals should abide by some rules, as shown in the figure 7:

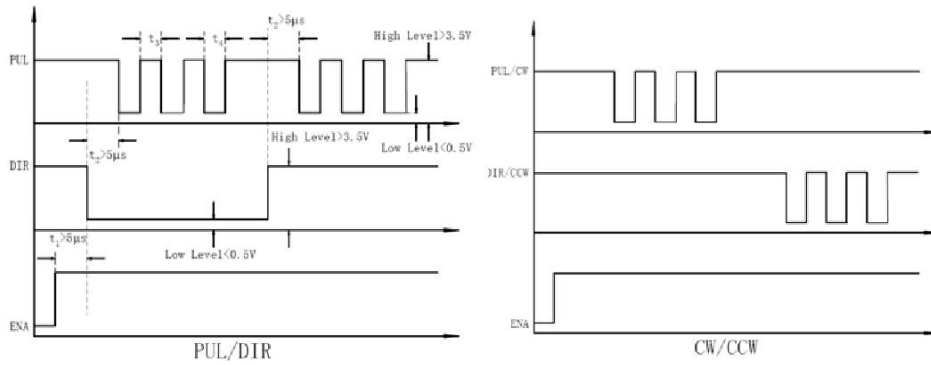


Figure 6: Sequence chart of control signals

Remark:

- t_1 : ENA must be ahead of DIR by at least $5\mu s$. Usually, ENA+ and ENA- are NC (not connected). See "Connector P1 Configurations" for more information.
- t_2 : DIR must be ahead of PUL effective edge by $5\mu s$ to ensure correct direction;
- t_3 : Pulse width not less than $1.5\mu s$;
- t_4 : Low level width not less than $1.5\mu s$.

TECHNICAL DOCUMENT

13. Protection Functions

To improve reliability, the driver incorporates some built-in protection features.

Over-voltage and Short-voltage Protections

When power supply voltage exceeds 280VAC or 395VDC, over-voltage protection will be activated and the RED ALARM LED will light. When power supply voltage is lower than 68VAC or 97VDC, short-voltage protection will be activated and the RED ALARM LED will light.

Short Circuit Protection

Protection will be activated in case of short circuit between motor coils or between motor coil and ground.

Wrong Motor Connection Protection

Protection will be activated when the motor is connected in a wrong way.

Over-temperature Protection

Protection will be activated when driver temperature reaches to 85°C.

When above protections are active, the motor shaft will be free and the RED ALARM LED will light. Reset the driver by repowering it to make it function properly after removing above problems.



Attention: Since there is no protection against power leads (+, -) reversal, it is critical to make sure that power supply leads correctly connected to the driver. Otherwise, the driver will be damaged instantly.

TECHNICAL DOCUMENT

14. Frequently Asked Questions

In the event that your 3P90M doesn't operate properly, the first step is to identify whether the problem is electrical or mechanical in nature. The next step is to isolate the system component that is causing the problem. As part of this process you may have to disconnect the individual components that make up your system and verify that they operate independently. It is important to document each step in the troubleshooting process. You may need this documentation to refer back to at a later date, and these details will greatly assist our Technical Support staff in determining the problem should you need assistance.

Many of the problems that affect motion control systems can be traced to electrical noise, controller software errors, or mistake in wiring.

Symptoms	Possible Problems
Motor is not rotating	No power
	Microstep resolution setting is wrong
	DIP switch current setting is wrong
	Fault condition exists
Motor rotates in the wrong direction	The driver is disabled
	Motor phases may be connected in reverse
The driver in fault	DIP switch current setting is wrong
	Something wrong with motor coil
	Control signal is too weak
Erratic motor motion	Control signal is interfered
	Wrong motor connection
	Something wrong with motor coil
	Current setting is too small, losing steps
Motor stalls during acceleration	Motor stalls during acceleration
	Motor is undersized for the application
	Acceleration is set too high
	Powersupply voltage too low
	Inadequate heat sinking/cooling
Excessive motor and driver heating	Automatic current reduction function not being utilized
	Current is set too high

15. Application

It is suitable for many stepper motors, from NEMA 17 to NEMA 34. It can be used in many machines, such as pick-place devices, engraving machines and so on. It is an ideal solution for the application that requires low-speed smoothness and high speed performance.