

THE EXPERT IN HOUSING SOLUTIONS



**STEEL  
STRUCTURE  
BUILDING**

ZHEJIANG PUTIAN INTEGRATED HOUSING CO.,LTD.

SALES OFFICE:  
3-1601 NO.1 DIKAI PLAZA,NO.471 JINCHENG ROAD,XIAOSHAN HANGZHOU CHINA  
TEL:+86-571-83513788 FAX:+86-400 826 6163-05190

FACTORY:  
BEILIU ROAD,BINHAI DEVELOPMENT ZONE,SHAOXING,CHINA  
TEL:+86-575-85796699 FAX:+86-575-85796688  
Http://www.putianhouse.com  
Email:inquiry@putianhouse.com

ZHEJIANG PUTIAN INTEGRATED HOUSING CO.,LTD.



## COMPANY PROFILE

Established in 2003, PTH is a leader in the Steel Structure industry. Certified by CE, BV IFA & ISO9001. We can design and manufacture all types of Steel Structure houses or buildings to suit your personal or business needs. We offer project support on any, or all, phases of the steel design and detailing based on your project requirements. PTH works with you to fully research, design, engineer, manufacture and also (if needed) help erect your Steel Structure building. PTH products are exported to over 60 countries worldwide; our professional, highly qualified staff always respond quickly to requests and inquiries. Providing consultation and delivery of a full range of steel structure design projects which can range from individual or smaller developments to multi-million dollar projects. 4S Service Network – PTH has recently opened retail showrooms in Toronto, Canada & Bahrain and plan to expand into Australia, Europe, South Africa, Russia and the Middle East with many more countries to follow. Our 4S retail showrooms feature a full service network including: pre-sale consulting & design services, sales & shipment services, installation guidance services and most importantly after-sales customer support service.

## FACTORY OVERVIEW

- Our Factory & Main Products have been verified by Bureau Veritas (BV)
- Our Factory is located in Shaoxing, Zhejiang, China; 25 minutes from the Hangzhou International Airport & 90 minutes from Shanghai & Ningbo City.
- 150 employees including 30 engineers and 35 senior skilled workers
- Professional FrameCAD from New Zealand specializing in Light Steel Villas
- 45,000 M2 building area, includes 2 workshops 35,000 M2 total
- More than 100 sets advanced production lines
- Capacity For Steel Structure Houses: 100000 m2
- Capacity For Light Steel Villas: 80000 m2
- Capacity For Steel Container Houses: 3000 units

## CERTIFICATION

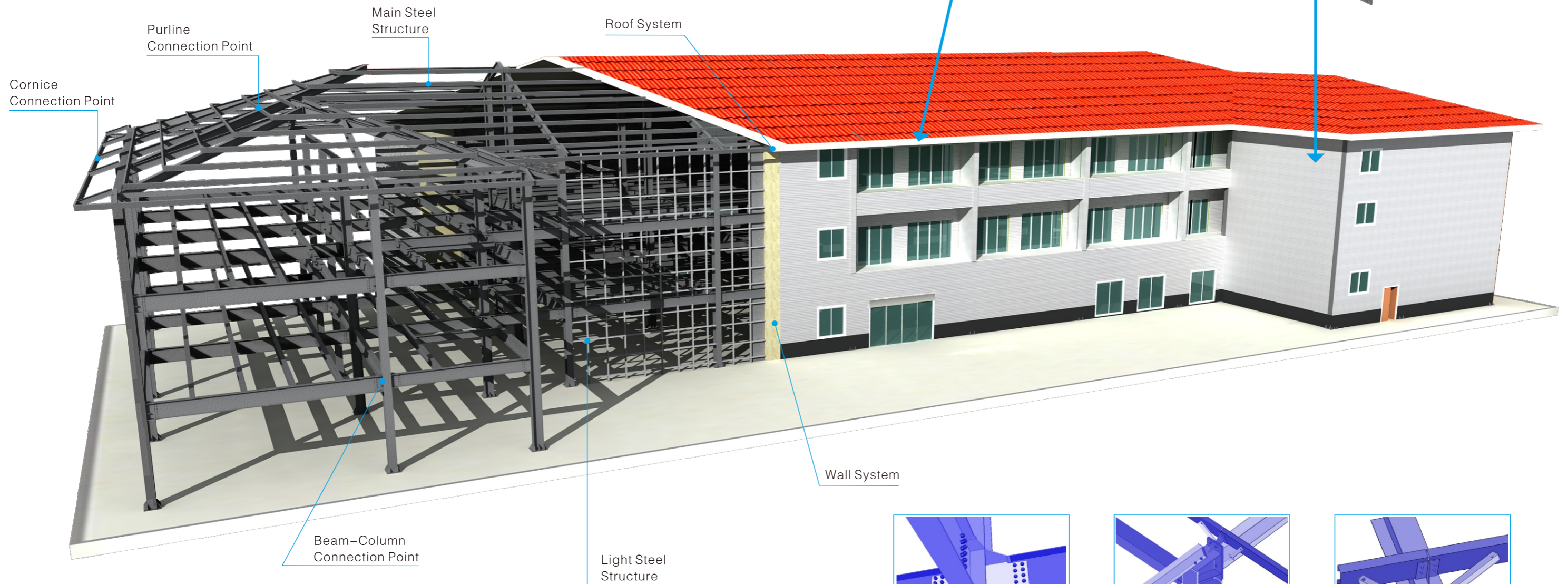


# MULTI-STORY STEEL STRUCTURE BUILDING

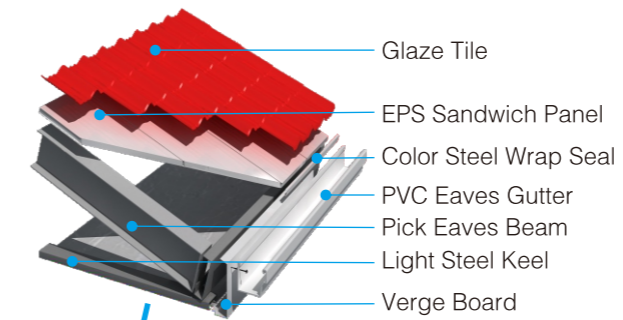
(HOTEL, DEPARTMENT, OFFICE BUILDING)

PTH can perfectly combine the traditional steel structure building with light steel building. This combination can be used as multi-story hotel, department, office building etc. This kind of building has many advantages, such as large span, low demand of base structure, seismic and wind resistance, fast to build and easy to maintain and so on. It can be built on many special places such as mountain, beaches and land with bad condition.

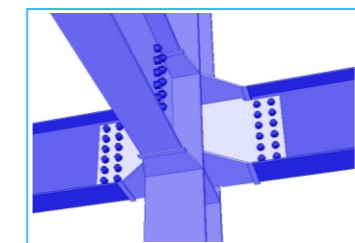
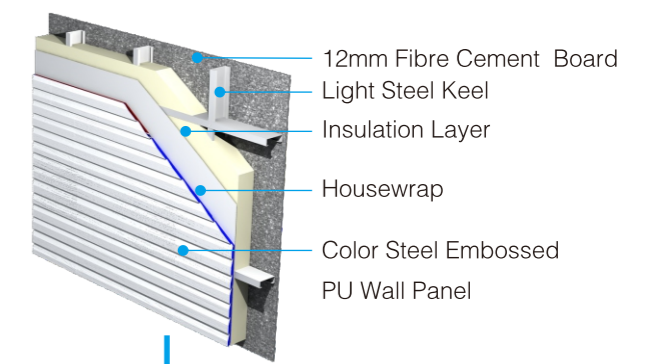
We will supply our clients all the roof, wall, floor etc. Materials according to their demands and design. What's more, we can also prefabricated the wall system and roof system for our clients so that it will shorten the construction period. The steel structure can be packed in one package, and it is easy to upload, download and stack in the site.



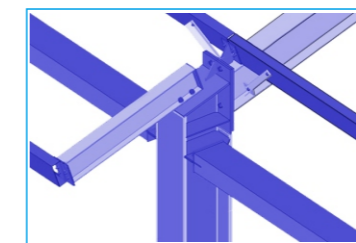
Roof System



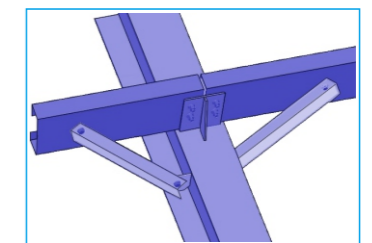
Wall System



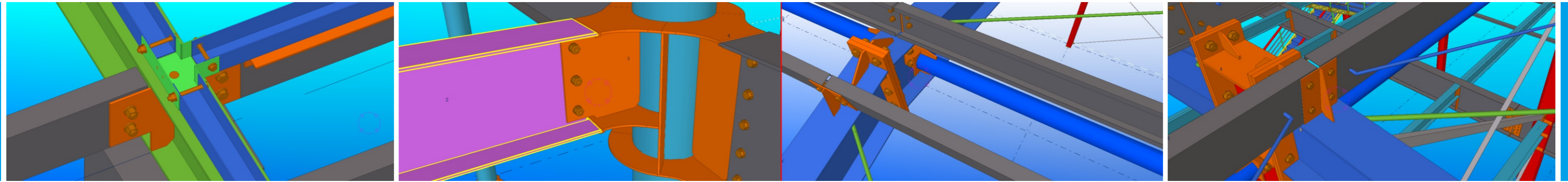
Beam-column Connection Point



Cornice Connection Point



Purline Connection Point

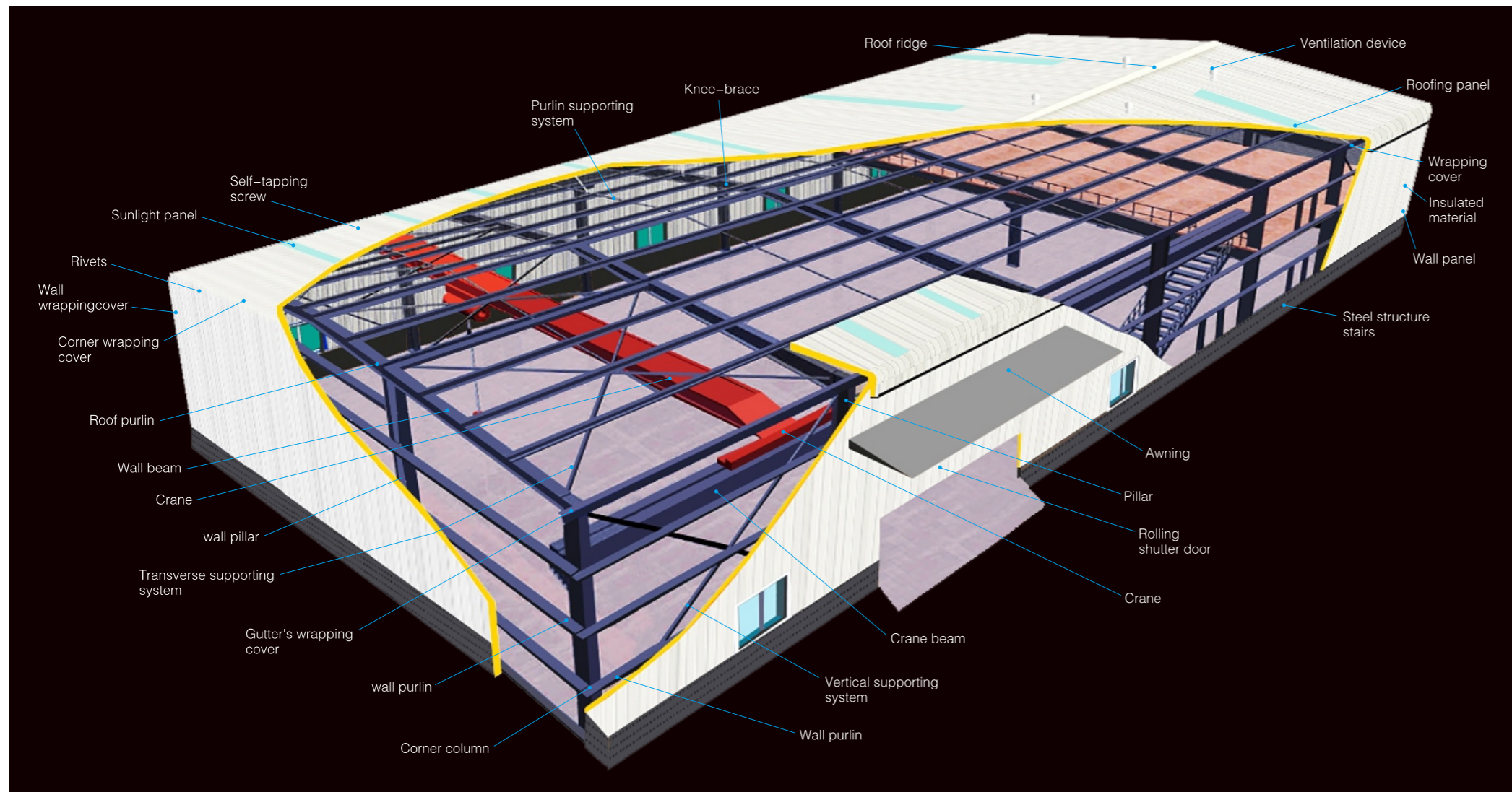


# SINGLE-STORY STEEL STRUCTURE BUILDING

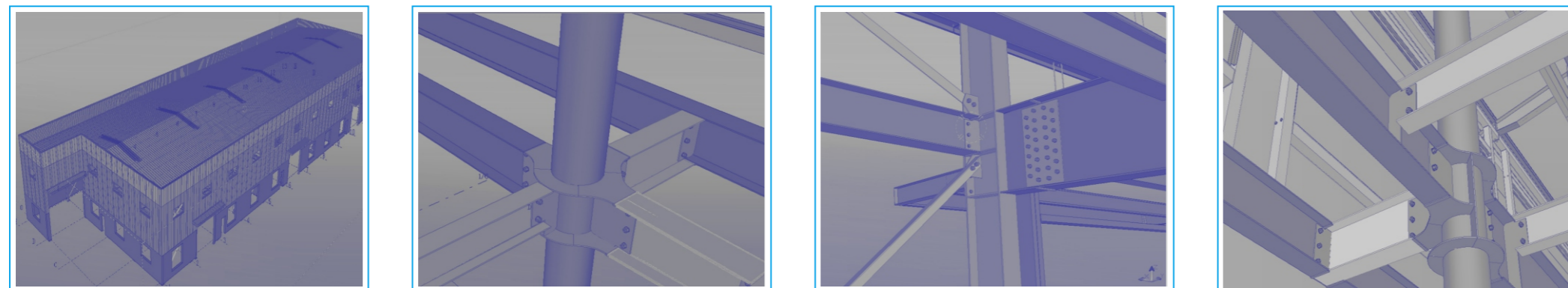
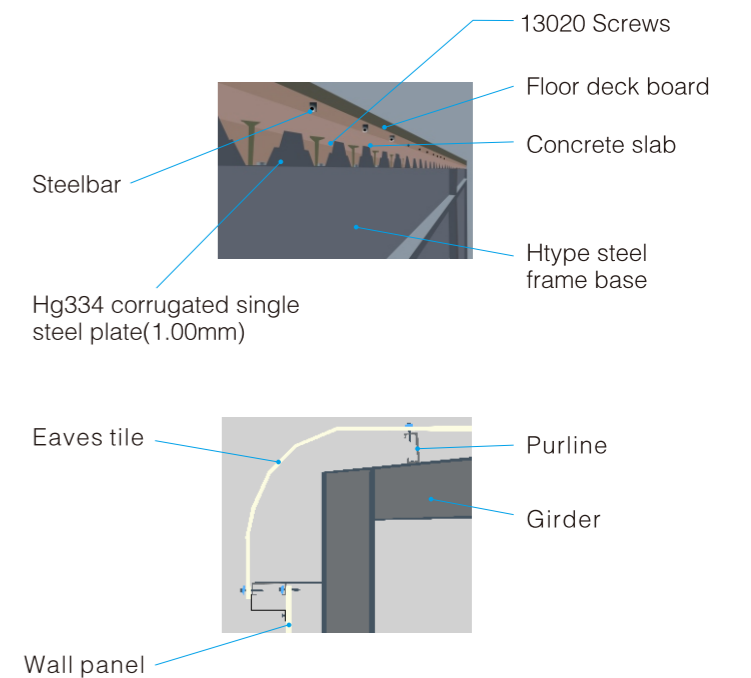
(WORKSHOP, WAREHOUSE, SHOPPING MALL)

PTH's single-story steel structure building is widely used as workshop, warehouse, shopping mall etc. Compared with the traditional concrete building, steel structure building has many advantages, such as large span, low demand of base structure, seismic and wind resistance, fast to build and easy to maintain and so on. Currently, our single-story steel buildings have been sold to more than 70 countries all over the world, such as Brazil, South Africa, Dubai, Norway etc.

The walls of the steel structure building are also flexible. You can choose colored steel plate or EPS\PU\XPS sandwich panel as your wall system. Our products can be packed in one package, and it is easy to upload, download and stack in the site.

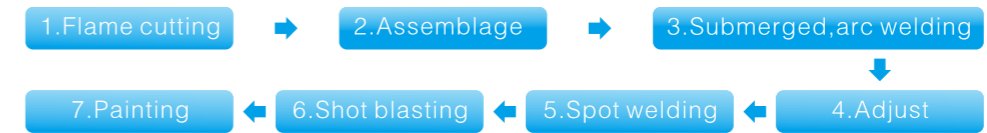


### Sectional view for Floor Deck Board



# MANUFACTURE FLOW

## The production of the primary steel structure



### The production of roof, floor and wall

we can produce colored steel glaze tile, colored steel EPS corrugated tile, floor, rippled plate, 16mm metal EPS external wall cladding, 100mm rippled EPS sandwich panel, 100mm rock wool sandwich panel.

### The production of the keels

We produce wall beam and purline, all members galvanized.



# QUALITY GUARANTEED

**Workshop**  
Area: 13,000m<sup>2</sup>, production capacity: 100,000m<sup>2</sup> per year.

## Packing and shipping

Load the steel structure components to a pallet and then wrap the roof and wall materials with corrugated paperboard PTH's packing is to protect the goods from damage during the transportation.

## Service

- 1.Design for free.
- 2.Send engineers to supervise the installation.
- 3.Send workers to install.
- 4.After sales service and maintainance.

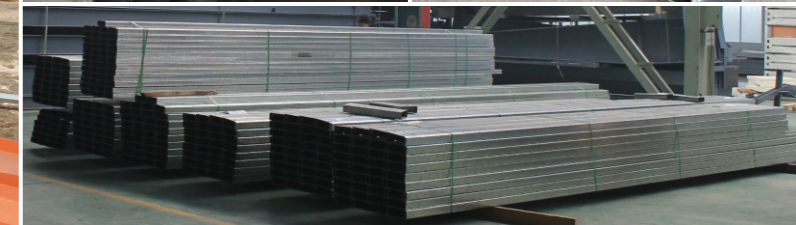
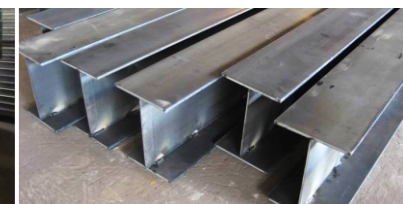


# ACCESSORIES

## Floor system

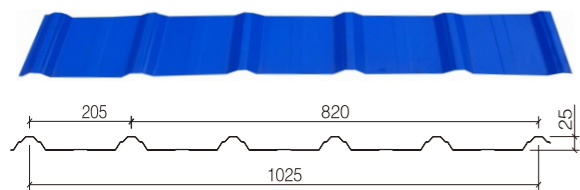
Purline

Beam and Column

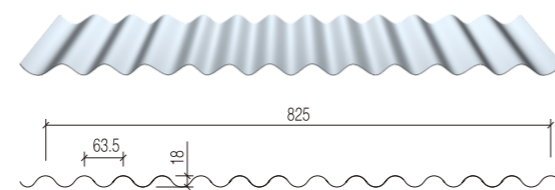


## Roof system

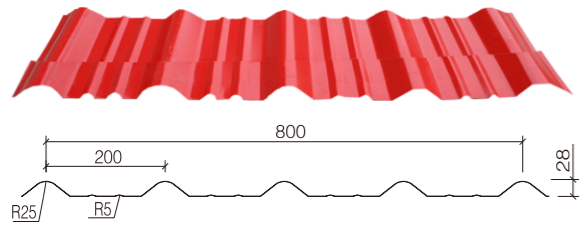
Corrugated Color Steel Panel



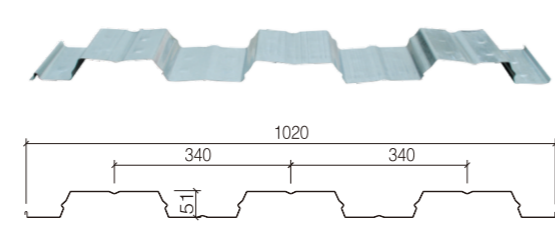
Waveform Color Steel Panel



Glaze Tile



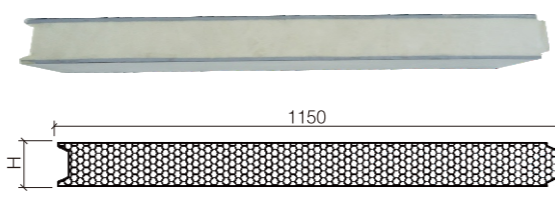
Deck Floor



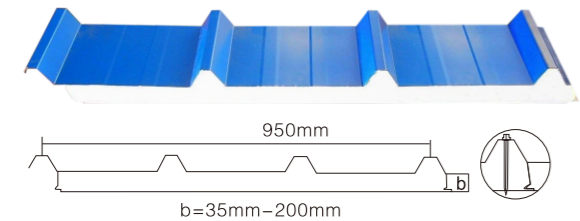
Concealed EPS sandwich panel



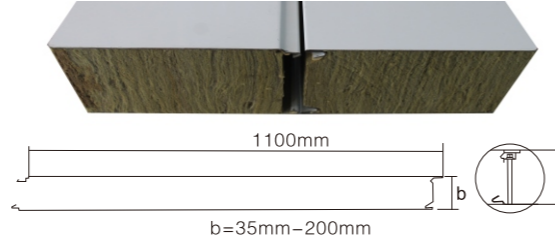
Sandwich Panel



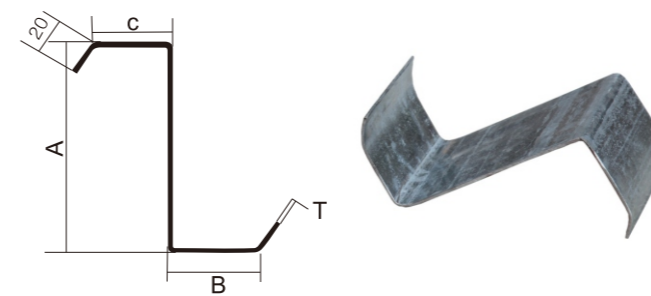
Corrugated Sandwich Panel



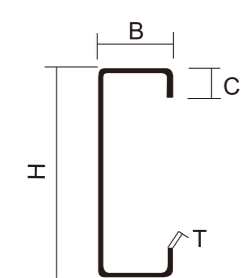
Concealed rock wool sandwich panel



## Size of Z-shape purlines



## Size of C-shape purlines



The specification is according to your demands

## Bolt and screw



High Strength Bolt



Chemical Bolt



Combined Anchor Bolt



High Strength Bolt



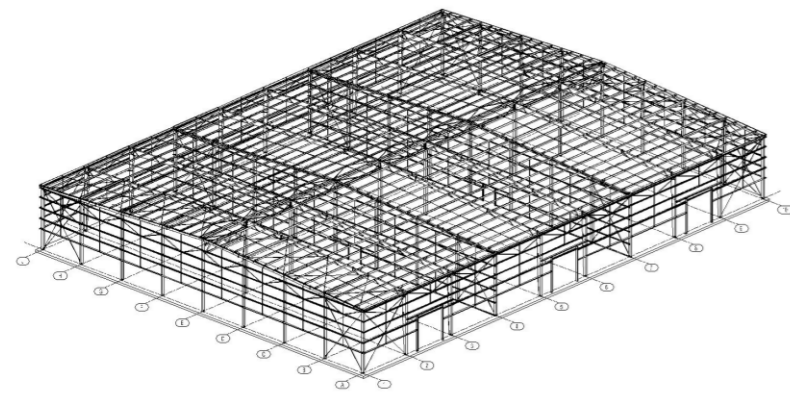
Expansion Bolt



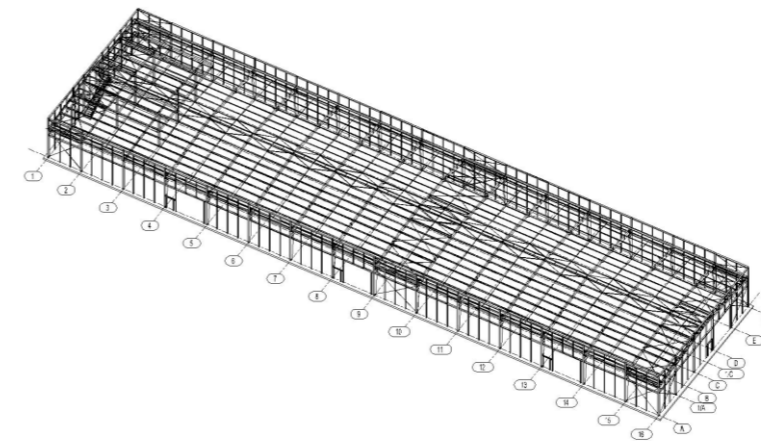
High Strength Bolt

## Stair





## PROJECT IN ALBANIA



## PROJECT IN GHANA

### Brief of the project

- Acreage: 3300sqm
- Delivery: 7X40'HQ

### Design paramater

- Snow load: 0.0KN/m<sup>2</sup>
- Wind load: 0.45KN/m<sup>2</sup>
- Roof dead load: 0.2KN/m<sup>2</sup>
- Roof live load: 0.3KN/m<sup>2</sup>

### Brief of the project

- Usage: Used as warehouse
- Acreage: 3310sqm
- Delivery: 7X40'HQ

### Design paramater

- Snow load: 0.0KN/m<sup>2</sup>
- Wind load: 0.5KN/m<sup>2</sup>
- Roof dead load: 0.25 KN/m<sup>2</sup>
- Roof live load: 0.4 KN/m<sup>2</sup>
- Sesmic resistance: 6 degree/0.12g







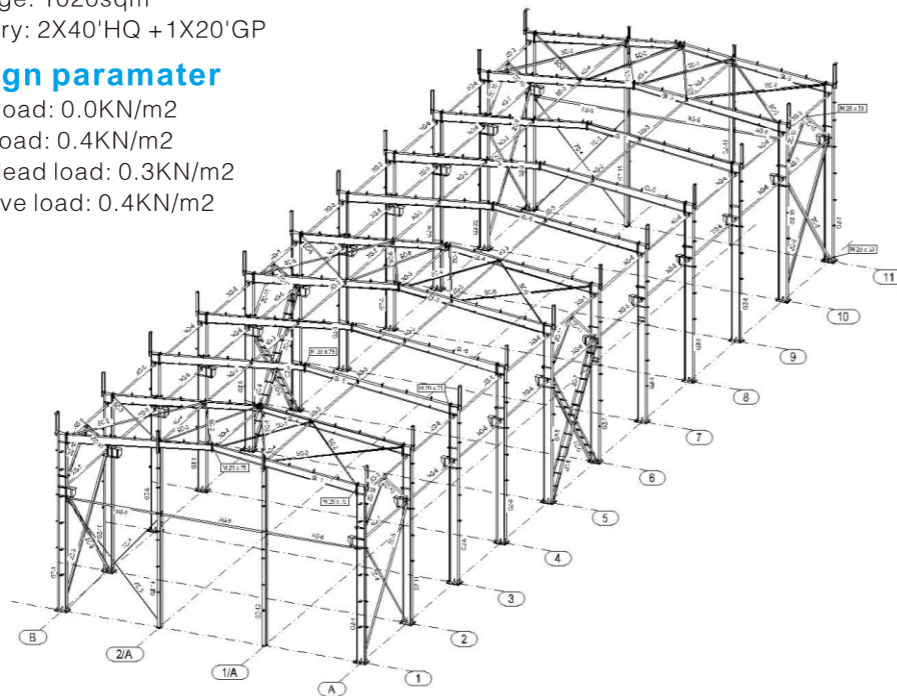
## PROJECT IN IRAQ

### Brief of the project

- Usage: Used as warehouse
- Acreage: 1020sqm
- Delivery: 2X40'HQ + 1X20'GP

### Design parameter

- Snow load: 0.0KN/m<sup>2</sup>
- Wind load: 0.4KN/m<sup>2</sup>
- Roof dead load: 0.3KN/m<sup>2</sup>
- Roof live load: 0.4KN/m<sup>2</sup>

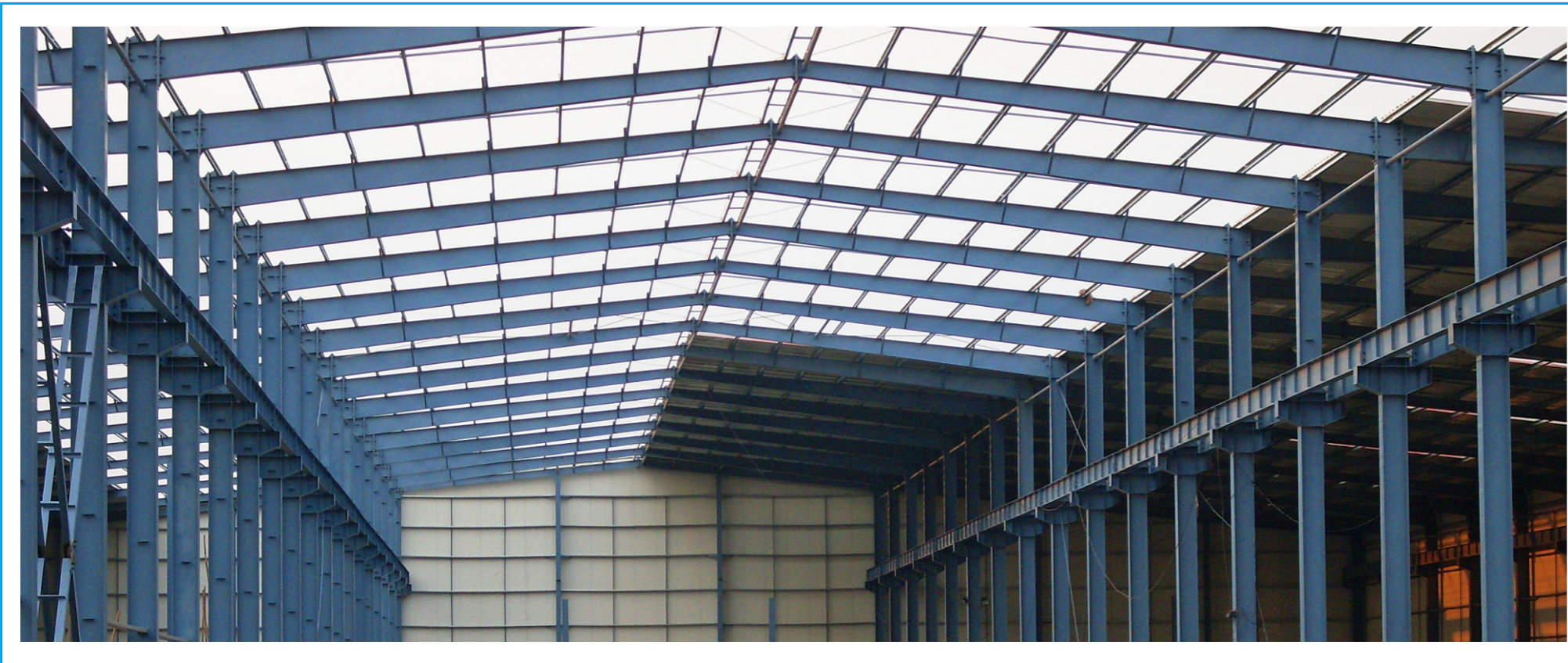


## PROJECT IN SOUTH AFRICA

### Brief of the project

- Usage: Two floors steel structure used as warehouse
- Acreage: 3110sqm

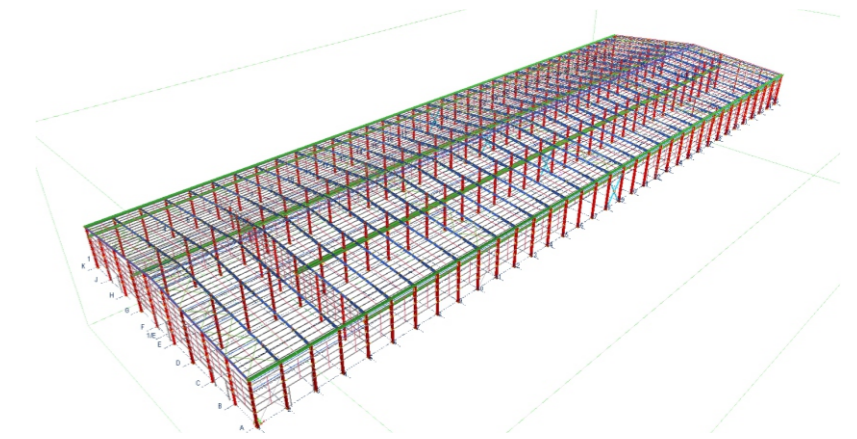




## PROJECT IN INDIA

- Location: New Delhi, India
- Size: 64.5mX200mX13m
- Acreage: 12890m<sup>2</sup>

It's a factory to produce building materials. The material of the wall is 75mm PU sandwich panel, good insulation and fire-resistant. The material of the roof is 50mm XPS sandwich panel, very strength and fire-resistant. There are some sunlight plate on the roof top, so the inside can get some nature light. and there are 60pcs ventilation fan on the roof, it can drain out the dirty and make the air fresh.





## PROJECT IN VIRGIN ISLANDS, BRITISH

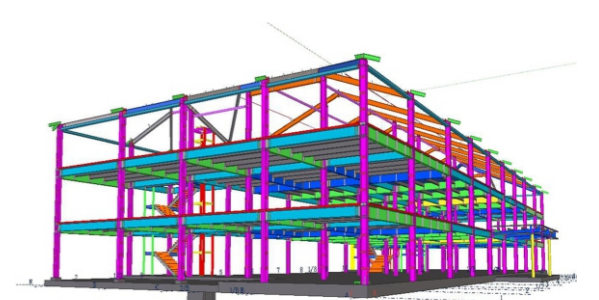
Building Area: 3,110m<sup>2</sup>,  
Usage: Used as the workshop and warehouse to produce and store the Goods, Materials, etc This project is finished at the June, 2011 the client use it as the workshop for big machines, it is in 3-floor structure at the two short sides, after the client finished the installation, he was very happy with our quality, and later the client bought other two projects again, once is in 80x50x25ft, another one is in 160x60x20ft, we keep in touch well with this client till now.



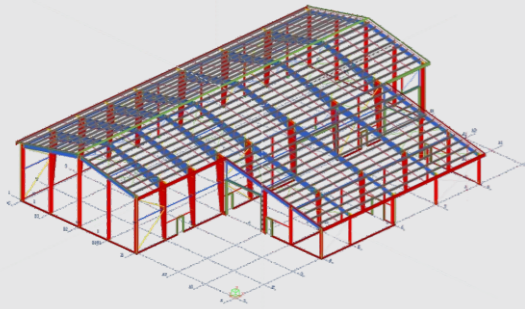
## STEEL STRUCTURE HOTEL PROJECT IN GABON

- Location: Libreville, Gabon
- Acreage: 9350sqm

This hotel is a perfect combine with traditional steel structure building and light steel building, the hotel is designed and produced by Putian Team, we send our own workers and engineers to install and decorate. There is twin hotels in Gabon.. The hotels total 3 floors with 200 rooms.



## PROJECT IN NORWAY



Building Area: 1,492m<sup>2</sup>  
 Usage: Used as the workshop and warehouse to produce and store the Goods, Materials, etc This project is finished at the August,2010 the client use it as the workshop for big machines to produce the chemical products, also one part of this project is used as the warehouse to store and semi-finished products, after the client finished the installation, he was very happy with our quality, so he bought the steel structure products shelf, and we keep in touch with this client till now.



## PROJECT IN NETHERLANDS

Building Area: 800m<sup>2</sup>,  
 Usage: Used as the warehouse to store the Goods and Materials This project is finished at the April,2009 and it is the first project at Netherlands of our company, after the client finished the installation, he was very happy with our quality, and we keep in touch with this client till now.



# PREFABRICATED HOUSE



The prefabricated house are determined and equipped products. It consists of Integrated H-type steel tray, 3-5 pcs integrated chassis, pieces of bending steel structure components, the corresponding insulation wall panels, roof panel, flooring board, and decorative wrapping covers. It has a series of advantages, such as easy transportation, beautiful appearance and few construction site.

It is widely used as office house (including meeting room), living house, commercial house, scenic house, exploration house, military buildings and so on. The core material of wall panel is EPS\XPS\PU (three kinds of sandwich panel). The customer can decide the thickness of the colored steel sheet, color, pattern and the doors, windows partition boards and QTY can be diversified, meeting the more requirements from the customer. Dual-slope house can be divided into two structures.

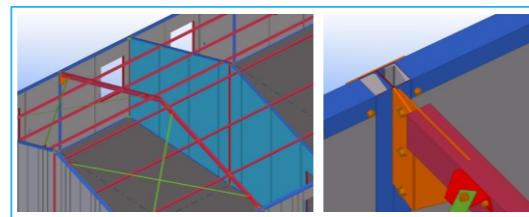
This product adopts the framework of light steel structure system, by using the sandwich panel as panel material, it is combined by the standard model machine, and the steel structure components are fixed by the screws. The prefabricated house is economical protection, and can be convenient to assembly and demolition, which achieved the construction concepts of common standardization for temporary building, setting environment protection & energy saving, rapid and highly efficient building. It is widely used in the field of large scale exhibition, entertainment, sports, dock, industrial and civil buildings, etc. as the temporary construction building.

## Advantages

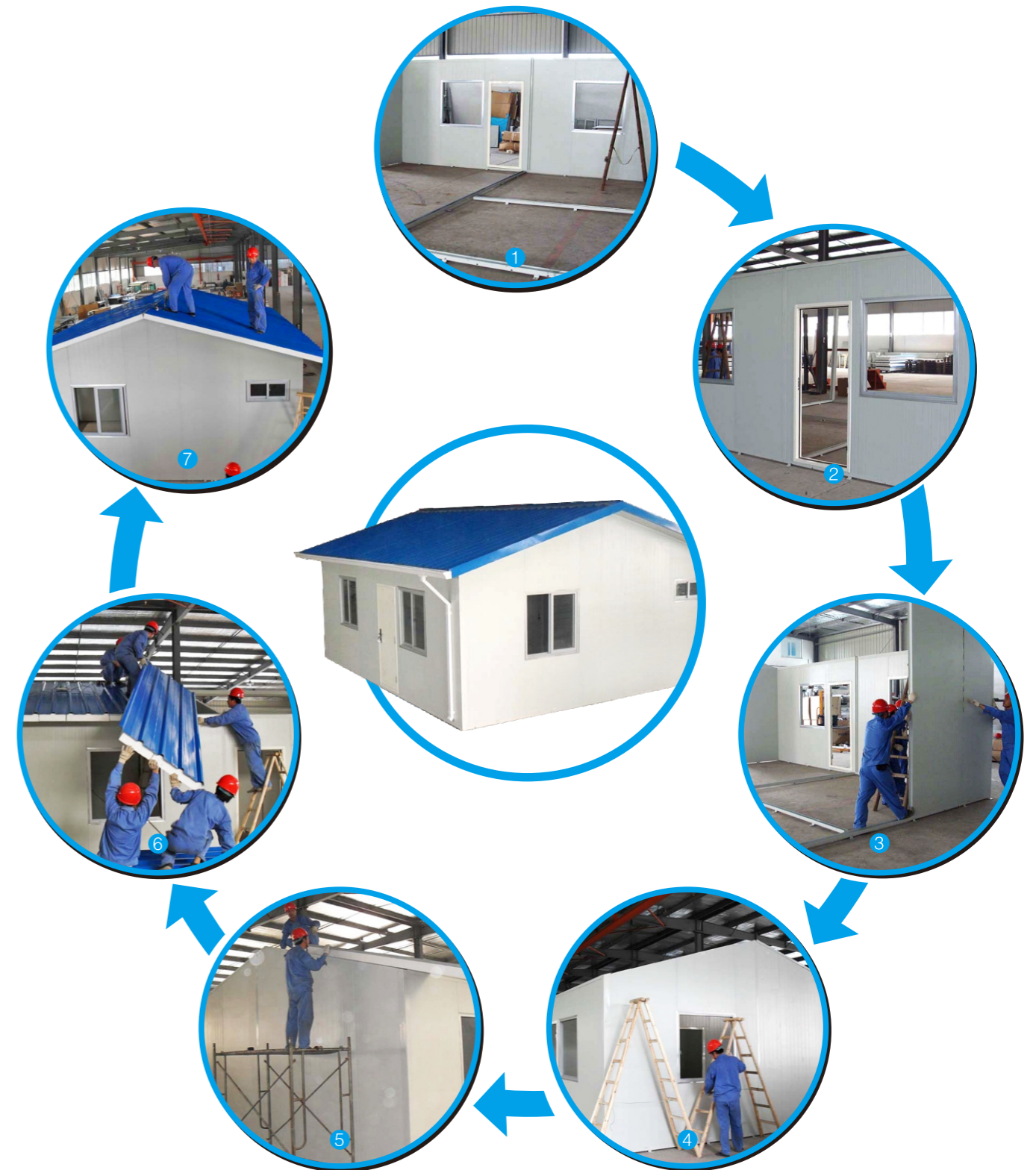
- Convenient transportation
- High space utilization
- Free space partition
- Without building rubbish
- Low cost, and so on

## Characteristics

- More than 90km/h of wind resistance
- With strong astigmatic resistance
- With great air tightness, and water-resistance
- Durability: about 20 years



# INSTALLATION INSTRUCTIONS





**Bahrain**  
August/15/2012



**Cyprus**  
October/6/2011



# PROJECT SHOWCASE



Babu New Guinea



Brazil



New Caledonia



Chile



Mozambique



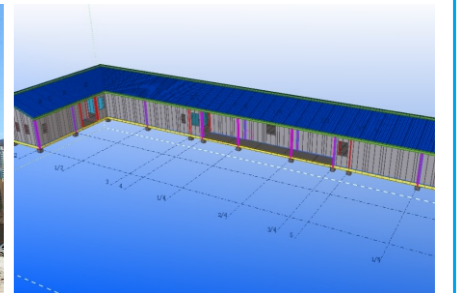
Tanzania



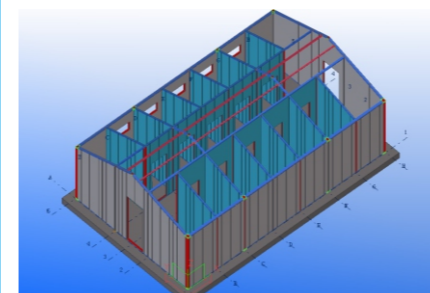
South Africa



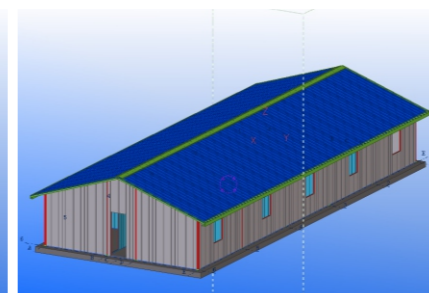
Dubai



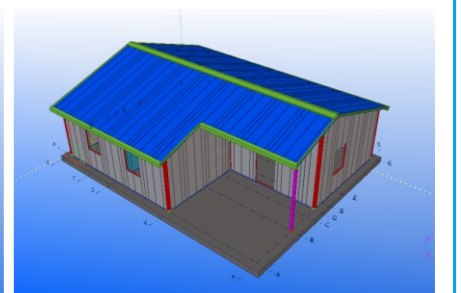
PTH-3D1



PTH-3D2



PTH-3D3



PTH-3D4