

tLED

tLED-190x70x30 Modular Passive LED Heatsink

Features VS Benefits

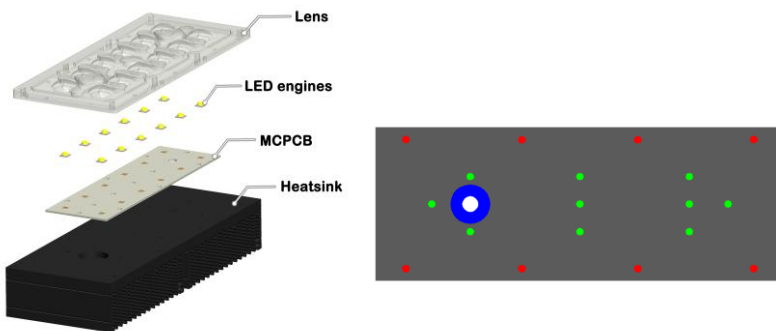
- * Mechanical compatibility with direct mounting of the SMD products to the LED cooler and thermal performance matching the lumen packages.
- * For flood light, street light and high bay designs from 2,800 to 6,800 lumen.
- * Thermal resistance range R_{th} 0.95°C/W.
- * Product size: L190-W70-H30mm- Standard width 70mm , Other widths on request.
- * Extruded from highly conductive aluminium for optimal thermal performance (AL6063-T5), aluminium 6063-T5 thermal conductivity is higher than ACD12 1.5 times.
- * 2 standard colors - clear anodised - black anodised
- * Waterproof level designs from IP65 to IP67.
- * With the SMD products (3030 , 2835 , 5050.....): Bridgelux , Cree , Edison , Citizen , LG Innotek Lumileds , Luminus, Lumens , Nichia , Osram , Prolight Opto , Seoul , Samsung , Sharp.



Adura LED engine and radiator assembly directly Mounting Options

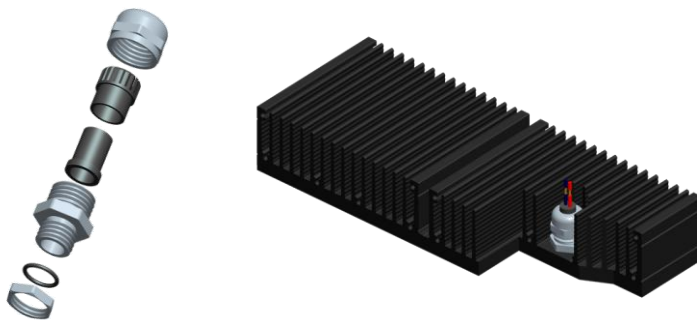
- * Below you find an overview of SMD products which standard fit on the tLED series coolers.
- * In this way mechanical after work and related costs can be avoided, and lighting designers can standardize their designs on a limited number of LED coolers.

Mounting Options



- * MCPCB for the green indicator marks.
Direct mounting with machine screws M3x6.0mm;
- * LEDIL Lens HB-IP-2X6 for the red indicator marks.
Direct mounting with machine screws M3x6.0mm;
- * Cable feed-through holder for the blue indicator marks.

Waterproof connectors



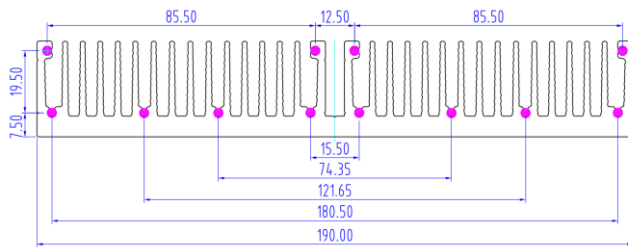
- Not only consider waterproofness of the lens, but also on outside connecting line. Mingfa Tech can provide compatible waterproof connector with tLED heat sink.
- Features :
- The claws and seals excellent design, can hold cable firmly and have a wider cable range. Resistant to salt water, weak acid, alcohol, oil, grease and common solvency.
 - 1、 Working temperature: Min -40°C to Max 120°C.
 - 2、 Body material: Brass nickel plated.
 - 3、 Cable range Dia: 3-6mm.
 - 4、 Protection degree: IP68

- Mingfa tech product number:
- 1、 21000001-04 (M8)
 - 2、 21000002-04 (M10)
 - 3、 21000003-04 (M6)

tLED

tLED-190x70x30 Modular Passive LED Heatsink

Mounting Guide



Please find has marked pink holes on the left.

- Using self tapping screw to mounting. Saving the mounting holes process cost.
- It can mounting enclosure of fixed lighting and tight holder or other lighting parts.

Drawings & Dimensions

Example:tLED-1907030-B-1,2

Example:tLED-190 **1** 30 - **2**

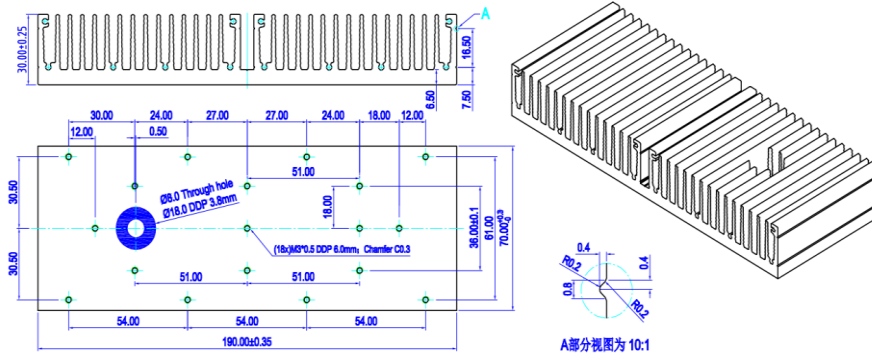
- 1** Width (mm)
- 2** Anodising Color
 - B-Black
 - C-Clear
 - Z-Custom

Notes:

- Mentioned models are an extraction of full product range.
- For specific mechanical adaptations please contact MingfaTech.
- MingfaTech reserves the right to change products or specifications without prior notice.



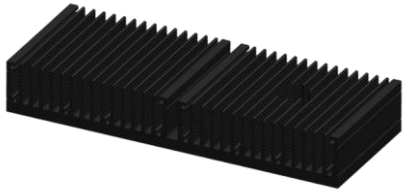
MOUNTING OPTION	Module type	Holder NO.	THREAD	THREAD DEPTH	THREAD HOLE DISTANCE
N	None	/	None	None	None
1	MCPCB	/	M3	6mm	(3x) 54.0x61.0mm
2	LEDIL Lens	/	M3	6mm	(3x) 51.0x26.0mm; (2x) 18.0mm;
3	Wire Holder	/	Φ8.0 THRU └─┘ Φ18.0 DP 3.8mm		51.0mm
4	Wire Holder	/	M6	THRU	51.0mm
5	Wire Holder	/	M8	THRU	51.0mm



tLED

tLED-190x70x30 Modular Passive LED Heatsink

The thermal data table

	
	<i>tLED-190x70x30</i>
Model No.	tLED-190x70x30
Size	L190-W70-H30mm
Material	AL6063-T5
Finish	Black Anodized
Weight(gr)	533
Thermal Wattage	53.0W
HeatsinkOs-a²	142323
Heat Sink T_{Rise} Above Ambient	0.95

Dissipated Power Pd(W)	Pd = Pe x (1-ηL)	Heat sink to ambient thermal resistance Rhs-amb (°C/W)	Heat sink to ambient temperature rise Ths-amb (°C)
		tLED-ADU-190x70x30	
15.0		1.53	23.00
30.0		1.13	34.00
45.0		1.00	45.00
60.0		0.88	53.00
75.0		0.83	62.00

