



for

LED

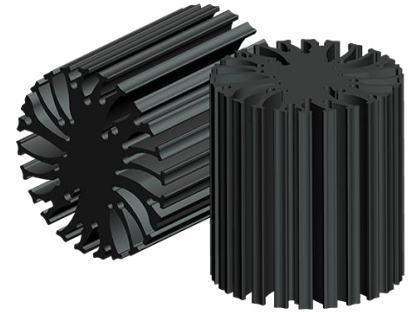


EtraLED

EtraLED-PHI-4880 for Philips Modular Passive Star LED Heat Sink Φ 48mm

Features VS Benefits

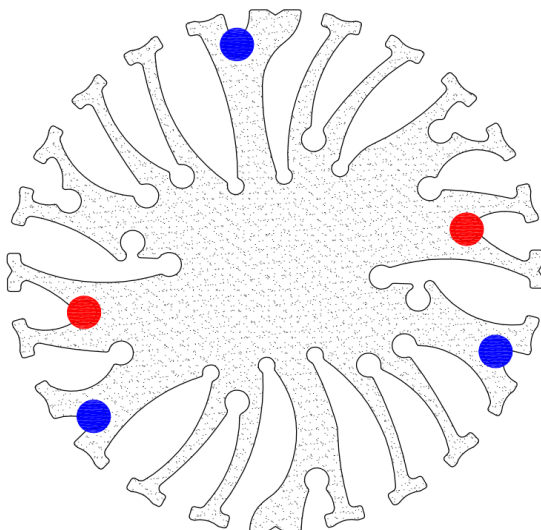
- * The EtraLED-PHI-4880 Philips Modular Passive LED Coolers are specifically designed for luminaires using the Philips LED engines.
- * Mechanical compatibility with direct mounting of the LED engines to the LED cooler and thermal performance matching the lumen packages.
- * For spotlight and downlight designs from 600 to 1700 lumen.
- * Thermal resistance range R_{th} 3.6°C/W.
- * Modular design with mounting holes foreseen for direct mounting of Philips SLM engines.
- * Diameter 48mm - standard height 80mm Other heights on request.
- * Extruded from highly conductive aluminum.



Zhaga LED engine and radiator assembly is a unified future international standardization

- * Below you find an overview of Philips COB's and LED modules which standard fit on the EtraLED coolers.
- * In this way mechanical after work and related costs can be avoided, and lighting designers can standardize their designs on a limited number of LED coolers.

PHILIPS



Philips Spot Light LED engines for which Zhaga book3 LED Modules holders are available.

Philips Fortimo SLM LED modular Gen2:

- Fortimo LED SLM 800LM 827 L13 G2;
- Fortimo LED SLM 800LM 830 L13 G2;
- Fortimo LED SLM 800LM 835 L13 G2;

- Fortimo LED SLM 800LM 840 L13 G2;
- Fortimo LED SLM 800LM 927 L13 G2;
- Fortimo LED SLM 800LM 930 L13 G2;

- Fortimo LED SLM 1100LM 827 L13 G2;
- Fortimo LED SLM 1100LM 830 L13 G2;
- Fortimo LED SLM 1100LM 835 L13 G2;
- Fortimo LED SLM 1100LM 840 L13 G2;

Philips Fortimo SLM LED modular Gen4:

- Fortimo LED SLM 1100LM 827 L9 G4;
- Fortimo LED SLM 1100LM 830 L9 G4;
- Fortimo LED SLM 1100LM 840 L9 G4;

- Fortimo LED SLM 1100LM 827 L13 G4;
- Fortimo LED SLM 1100LM 830 L13 G4;
- Fortimo LED SLM 1100LM 840 L13 G4;

NO`1: Blue indicator marks:

Direct mounting with machine screws M3x8mm;

NO`2: With Zhaga Book 3 LED holder for red indicator marks.

Direct mounting with machine screws M3x8mm;

Tel:+86-769-39023131

E-fax:+86-(020)28819702 ext:22122

Email:sales@mingfatech.com

Http://www.heatsinkled.com

Http://www.mingfatech.com





for

LED



EtraLED

EtraLED-PHI-4880 for Philips Modular Passive Star LED Heat Sink $\Phi 48\text{mm}$

Mounting Options and Drawings & Dimensions

Example: EtraLED-PHI-4880-B-3

Example: EtraLED-PHI-48 **1** - **2** - **3**

1 Height (mm)

2 Anodising Color

B-Black

C-Clear

Z-Custom

3 Mounting Options - see graphics for details Combinations available

Ex.order code - 12

means option 1 and 2 combined

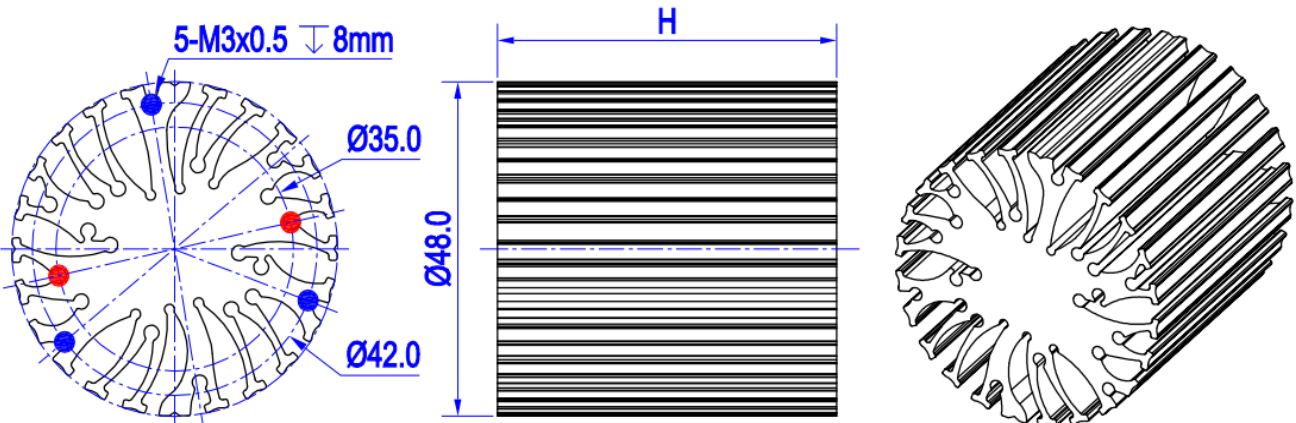
Notes:

- Mentioned models are an extraction of full product range.
- For specific mechanical adaptations please contact MingfaTech.
- MingfaTech reserves the right to change products or specifications without prior notice.

PHILIPS



MOUNTING OPTION	Module type	Holder NO.	THREAD	THREAD DEPTH	THREAD HOLE DISTANCE
1	Fortimo SLM	/	M3	8mm	35.0mm/ 2-@180°
2		/	M3	8mm	42.0mm/ 3-@120°



EtraLED

EtraLED-PHI-4880 for Philips Modular Passive Star LED Heat Sink Φ 48mm

The thermal data table

	 <i>EtraLED-4880</i>
Model No.	EtraLED-PHI-4880
Size	Φ48xH80mm
Material	AL6063-T5
Finish	Black Anodized
Weight(gr)	213.0
Thermal Wattage	14.0W
HeatsinkΘs-a²	58826
Heat Sink T Rise Above Ambient	3.6

	Pd = Pe x (1- η L)	Heat sink to ambient thermal resistance Rhs-amb (°C/W)	Heat sink to ambient temperature rise Ths-amb (°C)
		EtraLED-PHI-4850	EtraLED-PHI-4850
Dissipated Power Pd(W)	2.5	4.4	11.0
	4.5	4.2	19.0
	7.0	3.7	26.0
	9.5	3.7	35.0
	12.0	3.6	43.0
	17.5	3.1	53.0
	24.0	2.8	66.0

