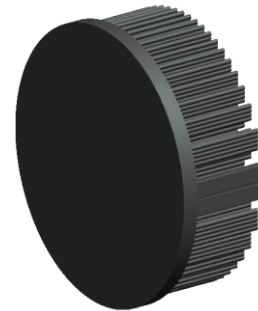


xLED

xLED-8030 Pin Fin LED Heat Sink Φ 80mm

Features VS Benefits

- * Mechanical compatibility with direct mounting of the LED modules to the LED cooler and thermal performance matching the lumen packages.
- * Thermal resistance range Rth 2.7°C/W.
- * Modular design with mounting holes foreseen for direct mounting of a wide range of LED modules and COB's:
- * Diameter 80mm - Standard height 30mm , Other heights on request.
- * Forged from highly conductive aluminum.
- 2 standard colors - clear anodized - black anodized
- Zhaga Book 3 Spot Light Modules Edison , Osram , Xicato , Bridelux , Citizen , Cree , Philips , Tridonic , Vossloh , LG , Seoul , Lustrous , SHARP , Samsung , GE lighting .




- 1) Xicato XSM, XIM,XTM;
- 2) Bridelux ES Star,Array V6,V8,V10 and Vero 10 Array LED engines;
- 3) Philips Fortimo SLM Modules;
- 4) Citizen CLL022-CLU024, CLL026-CLU028, CLL032-CLU034, CLL036-CLU038;
- 5) Cree XLamp CXA13xx, CXA15xx;
- 6) LG Innotek LEMWM18 10W, 13W;
- 7) Seoul Semiconductor ZC4, ZC6;
- 8) Tridonic TALEXXmodule SLE modules;
- 9) Edison EdiLex SLM and EdiLex II COB LED engines;
- 10) Lustrous LUSTRON 6 series LL604F, LL608D, LL613F, LL620F;
- 11) Prolight Opto PABS, PABA, PACB, PANA;
- 12) Luminus CLM-9; CXM-9; CHM-9 COB LED engines;
- 13) Osram SOsram SOLERIQ P6, SOLERIQ S13 and PrevaLED Core LED engines;
- 14) SHARP Mini Zenigata LED engines;
- 15) Vossloh-Schwabe LUGA Shop and LUGA C LED engines;
- 16) Samsung LC013 LED engines;
- 17) GE lighting Infusion™ LED engines;

Order Information

Example:xLED-8030-B-#

Example:xLED-8030- 

-  Anodising Color
- B-Black
- C-Clear
- Z-Custom



MingFa recommends the use of a high Thermal conductive interface between the LED Module and the LED cooler. Either thermal grease, A thermal pad or a phase change thermal pad Thickness 0.1-0.15mm is recommended.


for

LED

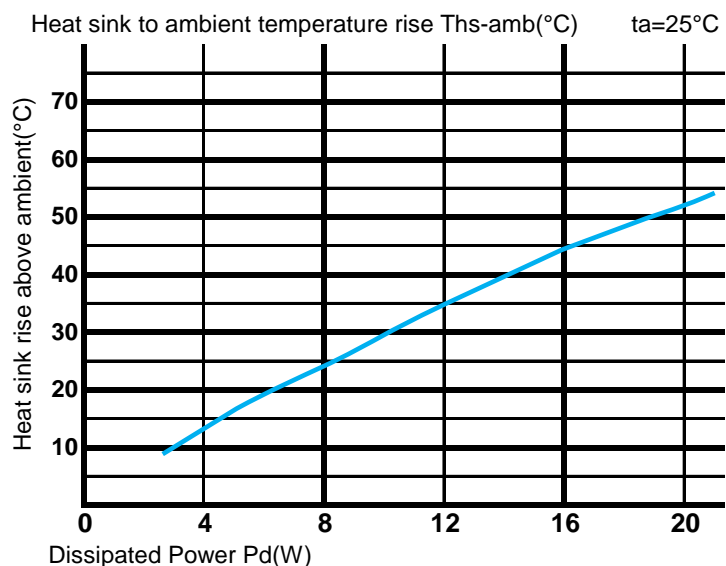
xLED

xLED-8030 Pin Fin LED Heat Sink Φ 80mm

The thermal data table

	
	<i>xLED-8030</i>
Model No.	xLED-8030
Size	Φ80xH30mm
Material	AL1070
Finish	Black Anodized
Weight(g)	140
Thermal Wattage	18.5W
HeatsinkOs-a²	72123
Heat Sink RiseT_{Rise Above Ambient} (°C/W)	2.7

Dissipated Power Pd(W)	Pd = Pe x (1-ηL)	Heat sink to ambient thermal resistance Rhs-amb (°C/W)	Heat sink to ambient temperature rise Ths-amb (°C)
		xLED-8030	
4.0		3.3	13.0
8.0		3.0	24.0
12.0		2.9	35.0
16.0		2.8	45.0
20.0		2.6	52.0



Notes:

- Mentioned models are an extraction of full product range.
- For specific mechanical adaptations please contact MingfaTech.
- MingfaTech reserves the right to change products or specifications without prior notice.