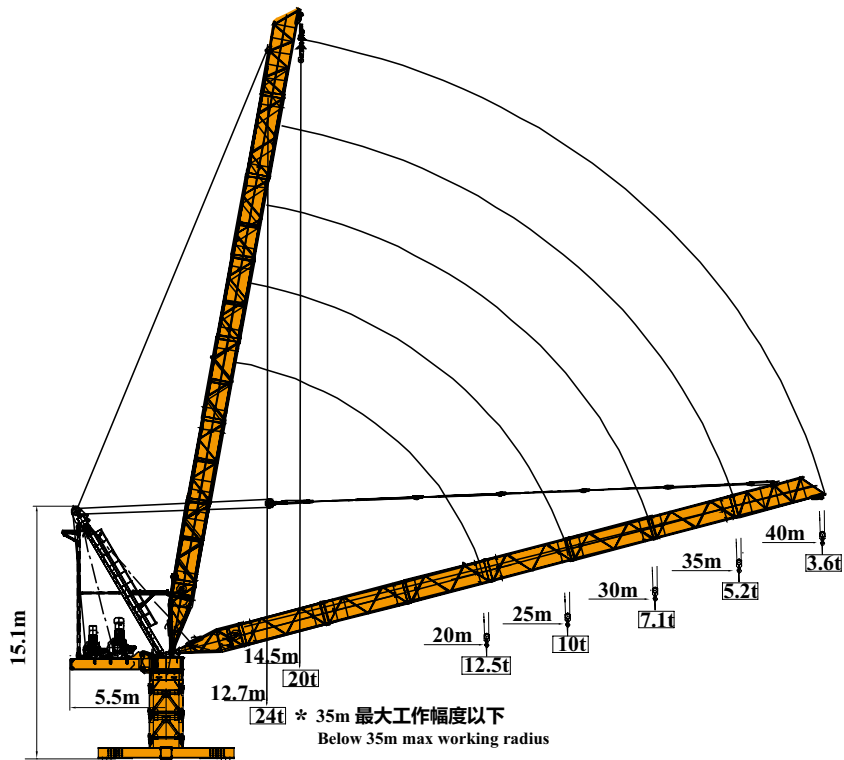


DERRICK TD4036-24



载荷特性 Load Diagrams

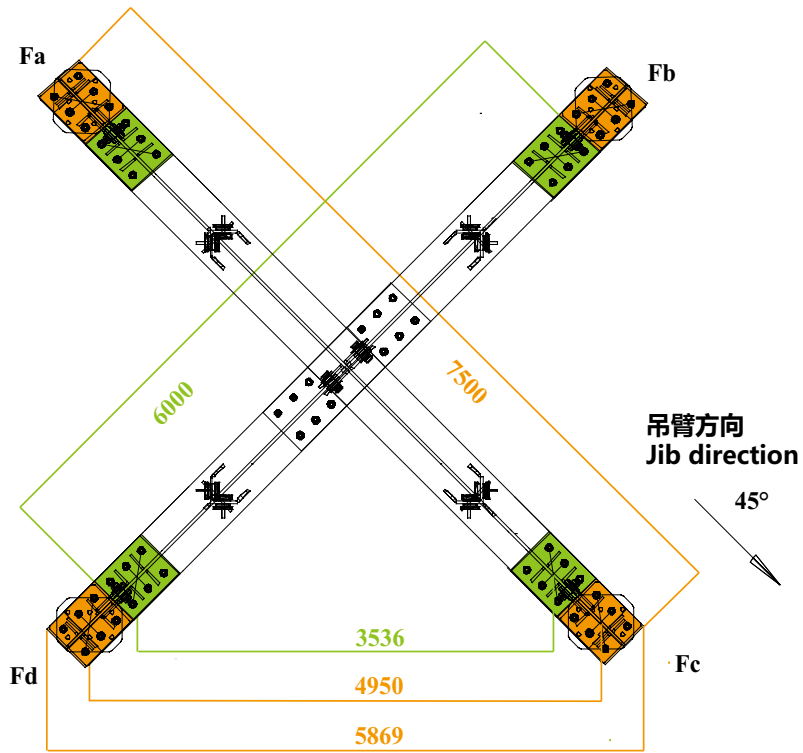
Radius m	rope	Max Load		m/t											
		t	m	12	15	18	20	23	25	28	30	33	35	38	40
40	5倍率	20.0	14.5	20.0	19.66	14.96	12.95	10.41	9.23	7.41	6.48	5.39	4.69	3.78	3.20
	4倍率	15.0	18.0		15.00	13.01	10.56	9.38	7.56	6.63	5.54	4.84	3.93	3.35	
	2倍率	10.0	23.0				10.0	9.63	7.81	6.88	5.79	5.09	4.18	3.60	
35	5倍率	24.0	12.7	24.0	19.9	16.03	13.39	10.43	9.20	7.56	6.00	5.36	4.70		
	4倍率	20.0	15.2		20.0	16.13	13.49	10.53	9.30	7.66	6.10	5.46	4.80		
	2倍率	15.0	18.6		15.0	13.64	10.68	9.45	7.81	6.25	5.61	4.95			
30	5倍率	24.0	13.0	24.0	20.0	15.49	13.63	10.94	9.20	7.77	6.68				
	4倍率	20.0	15.8		20.0	15.59	13.73	11.04	9.30	7.87	6.78				
	2倍率	15.0	19.1		15.0	13.83	11.19	9.45	8.02	6.93					
25	5倍率	24.0	13.0	24.0	20.1	15.61	13.66	10.94	9.50						
	4倍率	20.0	16.2		20.0	15.71	13.76	11.04	9.60						
	2倍率	15.0	19.1			15.0	11.19	9.75							
20	5倍率	24.0	13.0	24.0	20.2	15.61	12.30								
	4倍率	20.0	16.8		20.0	15.71	12.40								
	2倍率	15.0	19.5			15.0	12.55								
	5倍率	10.0	20.0				10.0								

5倍率 5-fall
 4倍率 4-fall
 3倍率 3-fall
 2倍率 2-fall

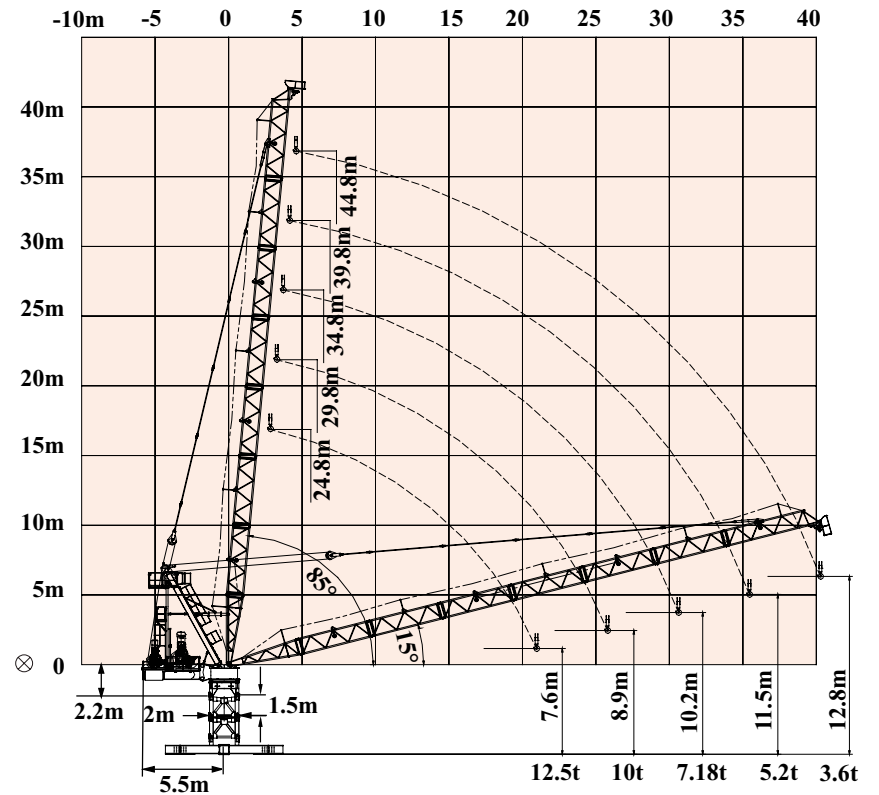
机构特性 Specification (Mechanisms)

机构特性 Mechanisms specification			2倍率 Two fall	3倍率 Three fall	4倍率 Four fall	5倍率 Five fall	容绳量 Drum	电机功率 Motor power								
起升机构 Hoist mech.	75LVF m/min	t	3.2	6.0	10	4.8	9.0	15	6.4	12	20	7.68	14.4	24	1000m	75kW
拉臂机构 Luffing mech.	45DVF m/min		70	52	35	46	35	23	35	26.3	17.5	29.2	21.9	14.6	230m	45kW
回转机构 Slewing mech.	11SVF r/min								0-0.73							5.5kW×2
电源 Power Supply							380V 50Hz/ 440V 60Hz									
供电容量 Necessary electric power							135kVA									

基础反力 Foundation forces



起重臂 Luffing Jib



基础支脚反力 Foundation angle rection force(kN) : 4.95m × 4.95m (8m)

40米半径 40M Jib Radius	Fa	Fb	Fc	Fd
45°	-170.5	191.6	553.6	191.6

基础支脚反力 Foundation angle rection force(kN) : 3.536m × 3.536m (6m)

40米半径 40M Jib Radius	Fa	Fb	Fc	Fd
45°	-314.8	191.6	697.9	191.6

配重重量 Counter weight	15t	自重重量 Self weight	57.9t
---------------------	-----	------------------	-------