



for

LED

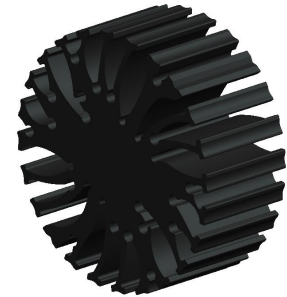


EtraLED

EtraLED-4820 Modular Passive LED Star Heat Sink Φ 48mm

Features VS Benefits

- * Mechanical compatibility with direct mounting of the LED modules to the LED cooler and thermal performance matching the lumen packages.
 - * Thermal resistance range Rth 6.25°C/W.
 - * Modular design with mounting holes foreseen for direct mounting of a wide range of LED modules and COB's:
 - * Diameter 48mm - Standard height 20mm , Other heights on request.
 - * Extruded from highly conductive aluminum.
- Zhaga Book 3 Spot Light Modules Edison , Osram , Xicato , Bridgelux , Citizen , Cree , Lumileds, Tridonic , Vossloh-Schwabe , Seoul , LG , Lustrous , Prolight , Sharp , Samung , Luminus ,Philips



- 1) Xicato XSM, XIM,XTM;
- 2) Bridgelux ESS, ESR, Vero 10, Vero 13,Vero 18 V-series;
- 3) Citizen CLL022-CLU024, CLL032-CLU034;
- 4) Cree XLamp CXA13xx, CXA15xx,CXA18;
- 5) Lumileds Luxeon COB's 1203, 1204, 1205, Luxeon K arrays K12, K16;
- 6) Osram PrevaLED Core,SOLERIQ P and SOLERIQ S LED engines.
- 7) Seoul Semiconductor ZC6, ZC12, ZC18,ZC25;
- 8) Tridonic TALEXXmodule SLE modules;
- 9) LG Innotek LEMWM18 10W, 13W, 17W;
- 10) Edison EdiLex SLM and EdiLex II COB LED engines;
- 11) Lustrous LUSTRON 6 series LL604F, LL608D, LL613F, LL620F
- 12) Prolight Opto PABS, PABA, PACB, PANA
- 13) SHARP Mini Zenigata Intermo and Mega Zenigata LED engines.
- 14) Samung LC013,LC019,LC026,LC033 COB LED engines.
- 15) Philips Fortimo SLM LED engines.
- 16) Vossloh-Schwabe LUGA Shop and LUGA C LED engines.
- 17) Luminus C##-9, C##14 COB LED engines.



Order Information

Example:EtaLED-4820-B-#

Example:EtaLED-48 **1** - **2** - **3**

- 1** Hight (mm)
- 2** Anodising Color
 - B-Black
 - C-Clear
 - Z-Custom
- 3** Mounting Options - see graphics for details Combinations available
 - Ex.order code - 12
 - means option 1 and 2 combined

MingFa recommends the use of a high thermal conductive interface between the LED module and the LED cooler. Either thermal grease, a thermal pad or a phase change thermal pad thickness 0.1-0.15mm is recommended.


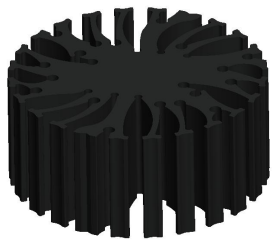
Tel: +86-769-39023131
E-fax: +86-(020)28819702 ext22122
Http://www.heatsinkled.com
Http://www.mingfatech.com



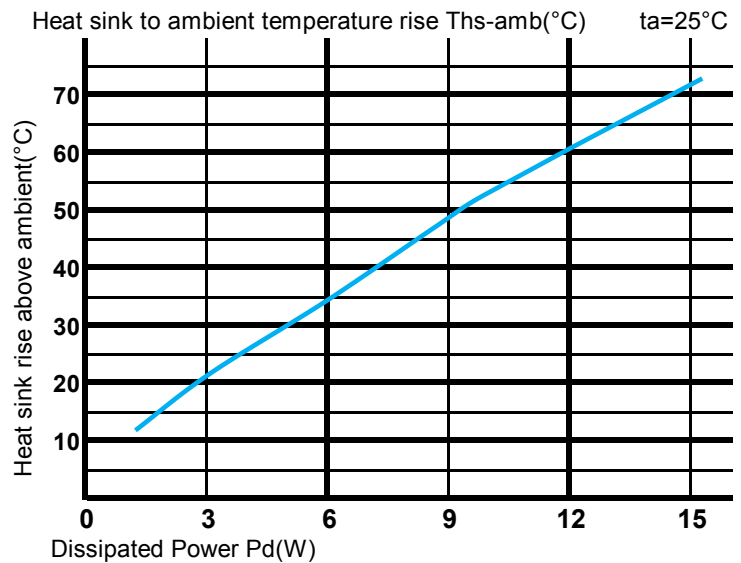
EtraLED

EtraLED-4820 Modular Passive LED Star Heat Sink Φ 48mm

The thermal data table

	
	<i>EtraLED-4820</i>
Model No.	EtaLED-4820
Size	Φ48xH20mm
Material	AL6063-T5
Finish	Black Anodized
Weight(gr)	53.3
Thermal Wattage	8.0W
HeatsinkΘs-a²	15933
Heat Sink Rise^T Rise Above Ambient (°C/W)	6.25

	Pd = Pe x (1-ηL)	Heat sink to ambient thermal resistance Rhs-amb (°C/W)	Heat sink to ambient temperature rise Ths-amb (°C)
		EtraLED-4820	EtraLED-4820
Dissipated Power Pd(W)	3	7.3	22
	6	5.8	35
	9	5.6	50
	12	5.1	61
	15	4.8	72



Notes:

- Mentioned models are an extraction of full product range.
- For specific mechanical adaptations please contact MingfaTech.
- MingfaTech reserves the right to change products or specifications without prior notice.