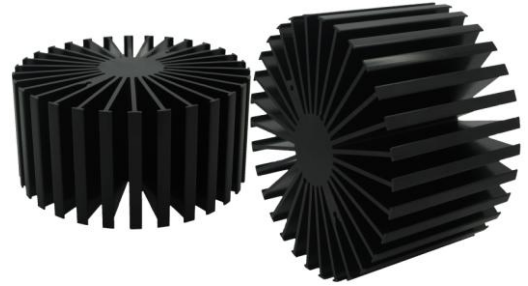


SimpoleD

SimpoleD-11750 Modular Passive LED Cooler Φ 117mm

Features VS Benefits

- * Mechanical compatibility with direct mounting of the LED modules to the LED cooler and thermal performance matching the lumen packages.
 - * Thermal resistance range Rth 0.97°C/W.
 - * Modular design with mounting holes foreseen for direct mounting of a wide range of LED modules and COB's:
 - * Diameter 117mm - Standard height 50mm , Other heights on request.
 - * Extruded from highly conductive aluminum.
 - * 2 standard colors - clear anodised - black anodised
- Zhaga Book 3 Spot Light Modules: Bridgelux , Citizen, Cree, Tridonic, Luminus
Lumileds, Osram, Lustrous, LG Innotek, Seoul, SHARP, SamSung



- 1) Bridelux ESS, V8 and V6, V-series;
- 2) Citizen CLL022-CLU024, CLL032-CLU034;
- 3) Cree XLamp CXA13xx, CXA15xx, CXA25xx;
- 4) Lumileds Luxeon COB's 1203, 1204, 1205, Luxeon K arrays K12,
- 5) Osram Soleriq S13, S19, E30;
- 6) Seoul Semiconductor ZC12, ZC18ZC25;
- 4) Tridonic Talaxx Stark SLE GEN3 Mini LES-10/LES-17, Gen4-15
- 8) LG Innotek LEMWM18 10W, 13W, 17W
- 9) Edison EdiPower II Star/HM/CAC series;
- 10) Lustrous LUSTRON 6 series LL604F, LL608D, LL613F, LL620F
- 11) Prolight Opto PABS, PABA, PACB, PANA
- 12) SHARP Mini Zenigata , Tiger Zenigata and Mega Zenigata LED
- 13) SamSung LC019, LC026 B LED engines.
- 14) Luminus C##-9, c##14 LED engines.
- 15) Vossloh-Schwabe LUGA Shop LED engines.



Order Information

Example: EtraLED-11750-B-#

Example: EtraLED-117 **1** - **2** - **3**

- 1** Hight (mm)
- 2** Anodising Color
B-Black
C-Clear
Z-Custom
- 3** Mounting Options - see graphics
details Combinations available
Ex.order code - 12
means option 1 and 2 combined

MingFa recommends the use of a high Thermal conductive interface between the LED Module and the LED cooler. Either thermal grease, A thermal pad or a phase change thermal A thermal pad or a phase change thermal pad. Thickness 0.1-0.15mm is recommended.

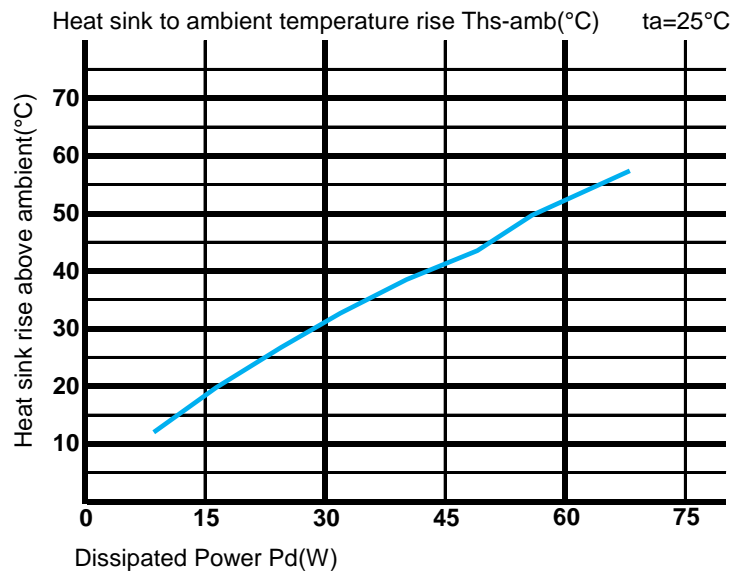
SimpoleD

SimpoleD-11750 Modular Passive LED Cooler Φ 117mm

The thermal data table

	
	<i>SimpoleD-11750</i>
Model No.	SimpoleD-11750
Size	Φ117xH50mm
Material	6063-T5
Finish	Black Anodized
Weight(g)	484
Thermal Wattage	49.2W
HeatsinkΘs-a²	147370
Heat Sink T_{Rise Above Ambient} (°C/W)	0.97

Dissipated Power Pd(W)	Pd = Pe x (1- η L)	Heat sink to ambient thermal resistance Rhs-amb (°C/W)	Heat sink to ambient temperature rise Ths-amb (°C)
		SimpoleD-11750	SimpoleD-11750
8		1.35	10.8
16		1.30	20.8
24		1.25	30.0
32		1.15	36.8
40		1.10	44.0
48		0.97	46.6
56		0.88	49.3



Notes:

- Mentioned models are an extraction of full product range.
- For specific mechanical adaptations please contact MingfaTech.
- MingfaTech reserves the right to change products or specifications without prior notice.