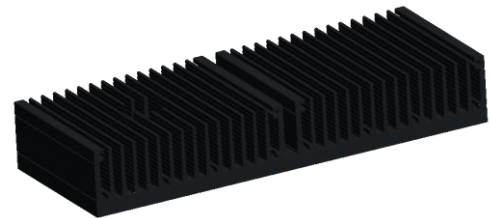


tLED

tLED-ADU-190x30x72 for Adura Modular Passive LED Cooler

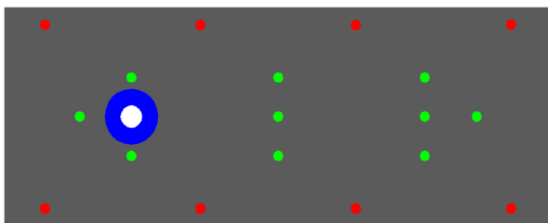
Features VS Benefits

- \* The tLED-ADU-190x30x72 Adura Modular Passive LED Coolers are specifically designed for luminaires using the Adura LED engines.
- \* Mechanical compatibility with direct mounting of the LED engines to the LED cooler and thermal performance matching the lumen packages.
- \* For spotlight and downlight designs from 2500 to 6300 lumen.
- \* Thermal resistance range Rth 0.93°C/W.
- \* Modular design with mounting holes foreseen for direct mounting of Adura Diamond series LED engines.
- \* Size 190x30mm - standard height 72.0mm Other heights on request.
- \* Extruded from highly conductive aluminum.



Adura LED engine and radiator assembly directly Mounting Options

- \* Below you find an overview of Adura COB's and LED modules which standard fit on the SimpoLED Square coolers.
- \* In this way mechanical after work and related costs can be avoided, and lighting designers can standardize their designs on a limited number of LED coolers.



Adura LED Modules directly Mounting Options

Diamond series LED engines.

- P/N 1950-A;
- CP2000;
- 2x6 XML;

Green indicator marks.

- Mounting with machine screws M3x6.0mm;
- With LEDIL lens: CS15020;
- Red indicator marks.

- Mounting with machine screws M3x6.0mm;
- Wire holder for the blue marks.

tLED

tLED-ADU-190x30x72 for Adura Modular Passive LED Cooler

**Mounting Options and Drawings & Dimensions**

Example:tLED-ADU-1923072-B-1,2

Example:tLED-ADU-19230 **1** - **2** - **3**

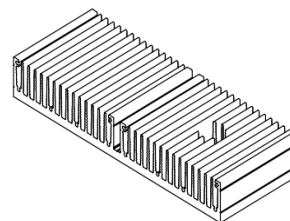
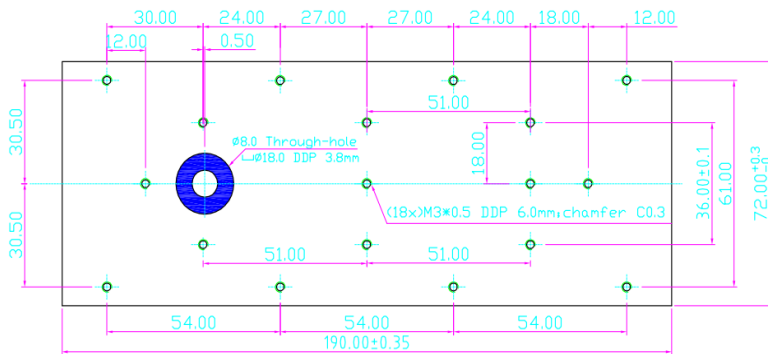
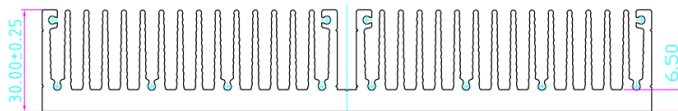
- 1** Height (mm)
- 2** Anodising Color  
B-Black  
C-Clear  
Z-Custom
- 3** Mounting Options - see graphics for details Combinations available  
Ex.order code - 12  
means option 1 and 2 combined



**ADURA**  
LED SOLUTIONS

- Notes:
- Mentioned models are an extraction of full product range.
  - For specific mechanical adaptations please contact MingfaTech.
  - MingfaTech reserves the right to change products or specifications without prior notice.

MOUNTING OPTION	Module type	Holder NO.	THREAD	THREAD DEPTH	THREAD HOLE DISTANCE
N	None	/	None	None	None
1	Diamond series	/	M3	6mm	(3x) 54.0x61.0mm
2	LEDIL Lens	/	M3	6mm	(3x) 51.0x26.0mm; (2x) 18.0mm;
3	Wire Holder	/	Φ8.0 THRU └┘Φ18.0 DP 3.8mm		51.0mm



tLED

tLED-ADU-190x30x72 for Adura Modular Passive LED Cooler

The thermal data table

	
	<i>tLED-190x30x72</i>
<b>Model No.</b>	tLED-ADU-190x30x72
<b>Size</b>	L190xW30xH72.0mm
<b>Material</b>	AL6063-T5
<b>Finish</b>	Black Anodized
<b>Weight(gr)</b>	533
<b>Thermal Wattage</b>	55.0W
<b>HeatsinkOs-a<sup>2</sup></b>	142783
<b>Heat Sink T Rise Above Ambient</b>	0.93

Dissipated Power Pd(W)	Pd = Pe x (1-ηL)	
	Heat sink to ambient thermal resistance Rhs-amb (°C/W)	Heat sink to ambient temperature rise Ths-amb (°C)
	tLED-ADU-190x30x72	
15.0	1.53	23.00
30.0	1.13	34.00
45.0	0.96	43.00
60.0	0.87	52.00
75.0	0.81	61.00

