



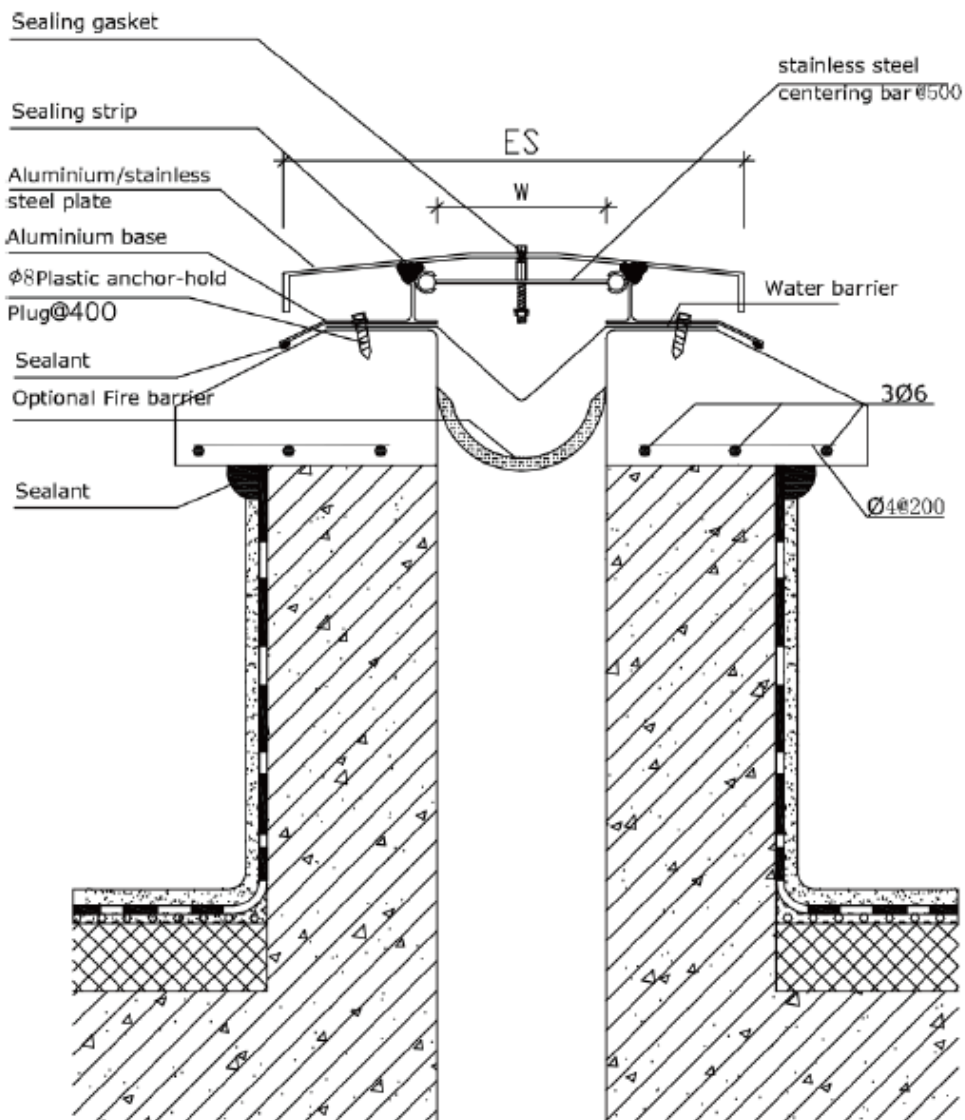
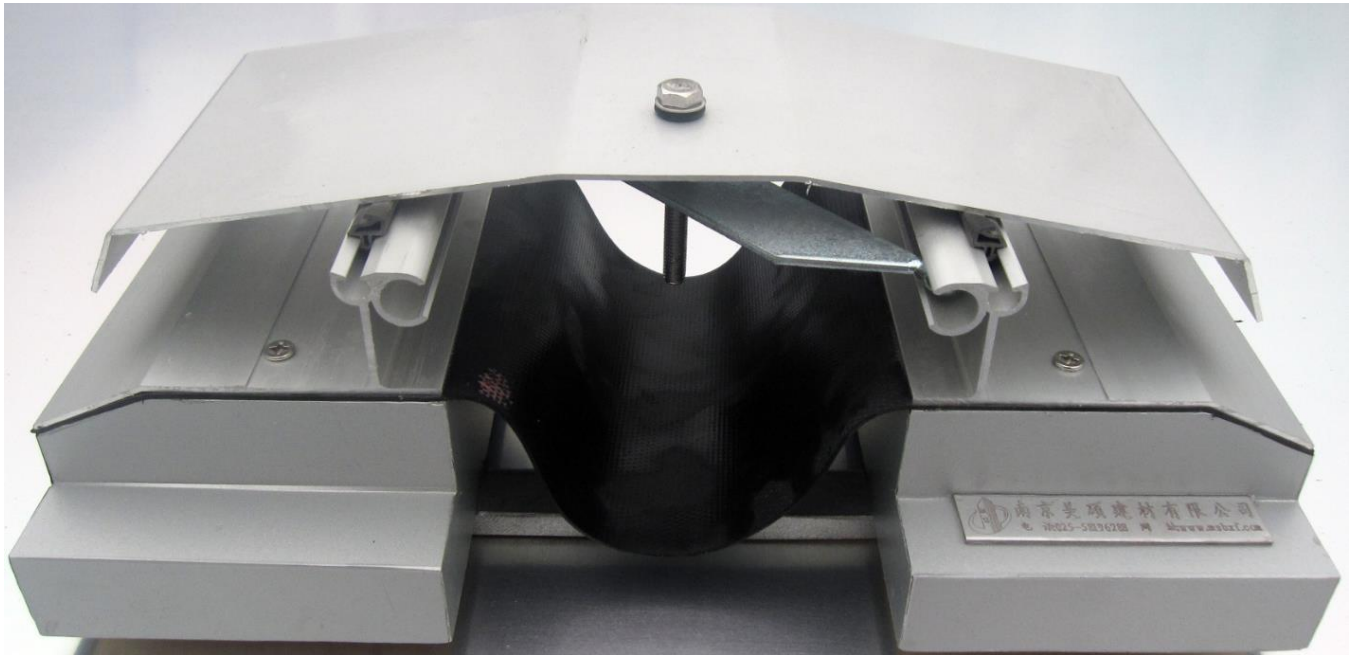
MEISHUO Building Materials CO.,Ltd

Office: No.2208, Huaqiao Square, Pukou district, Nanjing,China

Tel: 0086-025-58196288 Fax:0086-025-58196399

Website: www.msbox.com E-mail:sariel@msbox.com

MSWGZ EXPANSION JOINT SPEC DATA





MEISHUO Building Materials CO.,Ltd

Office: No.2208, Huaqiao Square, Pukou district, Nanjing,China

Tel: 0086-025-58196288 Fax:0086-025-58196399

Website: www.msbox.com E-mail:sariel@msbox.com

Product Description:

An architectural line of thermal, seismic, waterproof and fire rated expansion joint systems meeting the aesthetic and structural demands of airports, hospitals, shopping malls and other building types.

- Ideal for roof to roof applications
- Suitable for Joint width 50—500mm
- Featuring Neoprene weather washers that prevent leaking where fasteners penetrate frames/covers
- Gasketed fasteners resist water and air passage
- Surface mount system accommodates uneven expansion joint widths
- Anodised Aluminum, sprayed Aluminum, Stainless steel plate and Brass plate can be chosen
- Aluminum covers may be engineered to resist snow and wind loads

BASIC USES:

Application: Roof to Roof (Flat)

Joint Width (W)	50	75	100	125	150	200	250	300	350	400	450	500
Exposed surface (ES)	206	230	280	305	330	380	430	480	530	600	675	750
Movement Capacity	25	37	50	62	75	100	125	150	175	200	225	250

(Stainless Steel plate can be chose if need.)

TECHNICAL DATA:

MATERIALS:

Stainless Steel: AISI 304

Aluminum Plate: 1060

Aluminum Base: ASTM 6063T5 Mill finish, anodisation

WARRANTY:

Meishuo warrants that its products are manufactured free of defects and conform to the technical data listed. Under this warranty, we will replace any material proven defective when applied in accordance with our written instructions for applications recommended by us as suitable for subject products. Meishuo shall not be liable for any injury, loss or damage, direct or consequential, arising out of the use of the product