

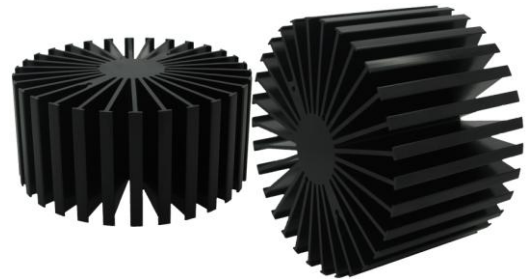


SimpoleLED

SimpoleLED-LUS-11780 for Lustrous Modular Passive LED Cooler Φ 117mm

Features VS Benefits

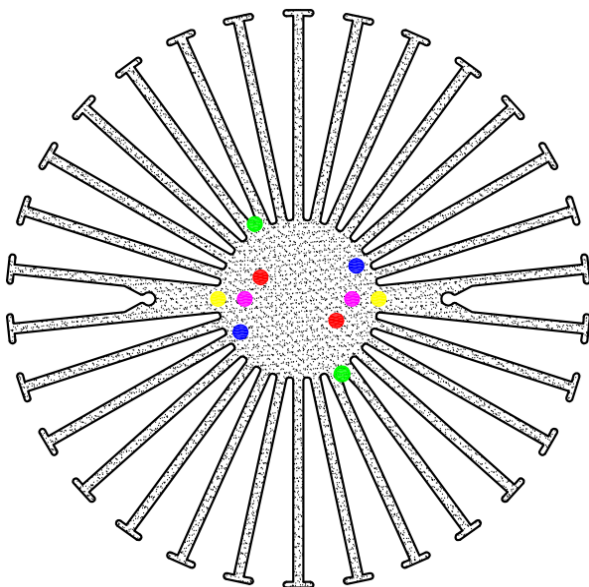
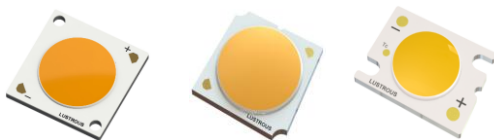
- * The SimpoleLED-LUS-11780 Lustrous Modular Passive LED Coolers are specifically designed for luminaires using the Lustrous LED engines.
- * Mechanical compatibility with direct mounting of the LED engines to the LED cooler and thermal performance matching the lumen packages.
- * For spotlight and downlight designs from 1700 to 7200 lumen.
- * Thermal resistance range Rth 0.8°C/W.
- * Modular design with mounting holes foreseen for direct mounting of Lustrous COB M series, LUSTRON series, Coral series, LUSTRON 5 series, LUSTRON 6 series engines.
- * Diameter 117mm - standard height 80mm Other heights on request.
- * Extruded from highly conductive aluminum.



Lustrous LED engine and radiator assembly directly Mounting Options

- * Below you find an overview of Lustrous COB's which standard fit on the SimpoleLED coolers.
- * In this way mechanical after work and related costs can be avoided, and lighting designers can standardize their designs on a limited number of LED coolers.

LUSTROUS
Green Technology of Lighting



Lustrous COB Modules Mounting Options

M series COB Modules Name :

- M105xxPBxx ;
- M107xxPExx ;
- M109xxPFxx ;

LUSTRON series COB Modules Name :

- L104xxCHxx ;
- L106xxLCxx ;
- L112xxLHxx ;

LUSTRON 5 series COB Modules Name :

- L505xxQCxx ;

LUSTRON 6 series COB Modules Name :

- LL604F1202-xxx ;
- LL608D1202-xxx ;

Direct Mounting with 2 screws M3 x 6mm;
Red indicator marks.

Coral series COB Modules Name:

- C108xxPFxx ;
- C113xxPGxx ;
- C620xxPIxx ;

Direct Mounting with 2 screws M3x 6mm;
Pink indicator marks.

LUSTRON 6 series COB Modules Name :

- LL613F1206-xxx ;
- LL620F1209-xxx ;

Direct Mounting with 2 screws M3 x 6mm;
Blue indicator marks.

LUSTRON 6 series COB Modules Name :

- LL630F1210-xxx ;
- LL630D1210-xxx ;
- LL660D1210-xxx ;

Direct Mounting with 2 screws M3 x 6mm;
Yellow indicator marks.

SimpoleD

SimpoleD-LUS-11780 for Lustrous Modular Passive LED Cooler Φ 117mm

Mounting Options and Drawings & Dimensions

Example: SimpoleD-LUS-11780-B-3

Example: SimpoleD-LUS-117 **1** - **2** - **3**

1 Height (mm)

2 Anodising Color

B-Black

C-Clear

Z-Custom

3 Mounting Options - see graphics for details Combinations available

Ex.order code - 12

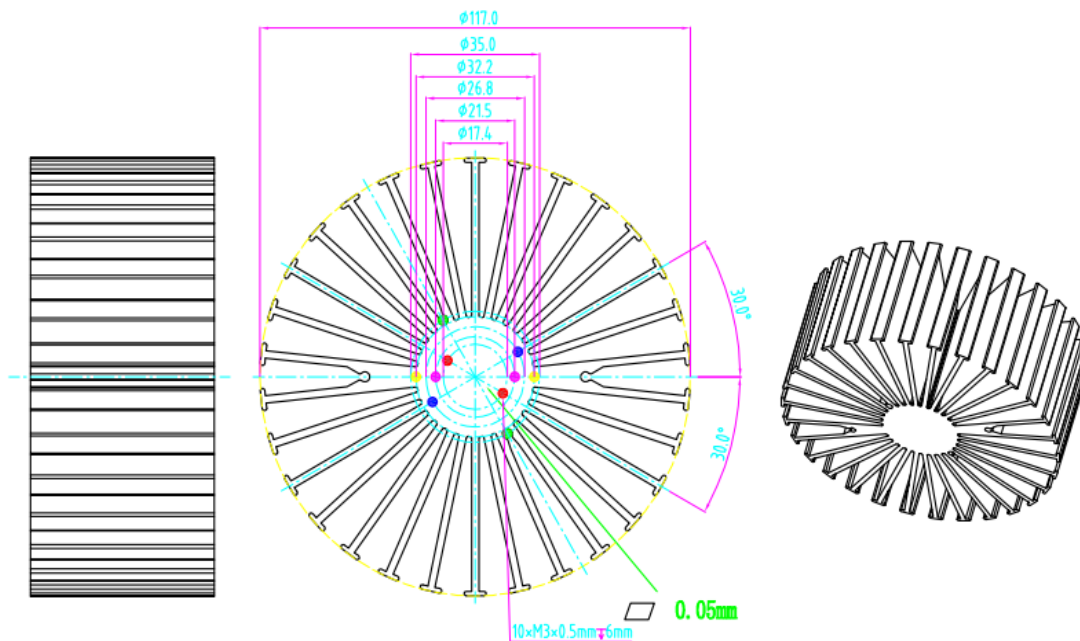
means option 1 and 2 combined

Notes:

- Mentioned models are an extraction of full product range.
- For specific mechanical adaptations please contact MingfaTech.
- MingfaTech reserves the right to change products or specifications without prior notice.

LUSTROUS
Green Technology of Lighting

| MOUNTING OPTION | Module type | Holder NO. | THREAD | THREAD DEPTH | THREAD HOLE DISTANCE |
|-----------------|--|------------|--------|--------------|----------------------|
| 1 | LL604F1202-xxx; LL608D1202-xxx; M105xxPBxx; M107xxPExx; M109xxPFxx; L505xxQCxx; L104xxCHxx; L106xxLCxx; L112xxLHxx; | / | M3 | 6mm | 17.4mm/ 2-@180° |
| 2 | C108xxPFxx; C113xxPGxx; C620xxPlxx ; | / | M3 | 6mm | 21.5mm/ 2-@180° |
| 3 | LL613F1206-xxx; LL620F1209-xxx ; | / | M3 | 6mm | 26.8mm/ 2-@180° |
| 4 | LL630F1210-xxx ; LL630D1210-xxx ; LL660D1210-xxx ; | / | M3 | 6mm | 32.2mm/ 2-@180° |



SimpoleLED

SimpoleLED-LUS-11780 for Lustrous Modular Passive LED Cooler Φ117mm

The thermal data table

| | |
|---------------------------------------|---|
| |  <i>SimpoleLED-11780</i> |
| Model No. | SimpoleLED-LUS-11780 |
| Size | Φ117xH80mm |
| Material | AL6063-T5 |
| Finish | Black Anodized |
| Weight(g) | 774.0 |
| Thermal Wattage | 60.7W |
| HeatsinkOs-a² | 231490 |
| Heat Sink T Rise Above Ambient | 0.8 |

| Dissipated Power Pd(W) | Pd = Pe x (1-ηL) | Heat sink to ambient thermal resistance Rhs-amb (°C/W) | Heat sink to ambient temperature rise Ths-amb (°C) |
|------------------------|------------------------|--|--|
| | | SimpoleLED-LUS-11780 | SimpoleLED-LUS-11780 |
| 15.0 | | 1.01 | 15.2 |
| 30.0 | | 0.88 | 26.4 |
| 45.0 | | 0.80 | 36.1 |
| 60.0 | | 0.75 | 45.2 |
| 75.0 | | 0.71 | 53.8 |
| 90.0 | | 0.68 | 62.0 |

