



eLED

eLED-7080 Modular Passive LED Star Heat Sink ϕ 70mm

Features VS Benefits

* Mechanical compatibility with direct mounting of the LED modules to the LED cooler and thermal performance matching the lumen packages.

*Thermal resistance range Rth 1.77°C/W.

* Modular design with mounting holes foreseen for direct mounting of a wide range of LED modules and COB's:

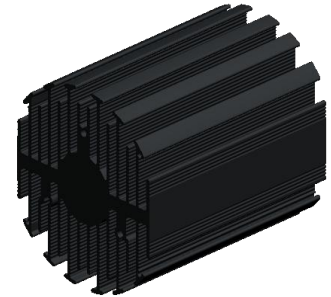
* Diameter 70mm - Standard height 80mm , Other heights on request.

* Extruded from highly conductive aluminum.

2 standard colors - clear anodised - black anodised

Zhaga Book 3 Spot Light Modules Edison ,Xicato ,Bridgelux , Osram ,Citizen ,Lumileds ,Cree ,

Tridonic , Vossloh-Schwabe ,Seoul ,LG ,Lustrous ,Prolight ,Samung ,SHARP , Luminus .Philips



- 1) Xicato XSM, XIM,XTM;(XSA-307,XSA-308)
- 2) Bridgelux ES Rectangle Array Series Vero 13 and Vero18 COB engines.
- 3) Citizen CLL022-CLU024, CLL032-CLU034;
- 4) Cree XLamp CXA13xx, CXA15xx,CSA18xx;
- 5) Lumileds Luxeon COB's 1203, 1204, 1205, Luxeon K arrays K12, K16;
- 6) Osram Soleriq S13, S19, E30
- 7) Seoul Semiconductor ZC6, ZC12, ZC18,ZC25;
- 8) Tridonic TALEXXmodule SLE nodules engines.
- 9) LG Innotek LEMWM18 10W, 13W, 17W
- 10) Edison EdiLex SLM and EdiLex II COB LED engines.
- 11) Lustrous LUSTRON 6 series LL604F, LL608D, LL613F, LL620F
- 12) Prolight Opto PABS, PABA, PACB, PANA
- 13) Samung LC013,LC019,LC026 COB LED engines.
- 14) SHARP Mini Zenigata,Tiger Zenigataand and Mega Zenigata LED engines.
- 15) Philips Fortimo SLM LED engines.
- 16) Vossloh-Schwabe LUGA Shop LED engines.
- 17) Luminus C##9,C##14 LED engines.



Order Information

Example:eLED-7080-B-#

Example:eLED-70 **1** - **2**

1 Hight (mm)

2 Anodising Color

B-Black

C-Clear


Z-Custom

MingFa recommends the use of a high thermal conductive interface between the LED module and the LED cooler. Either thermal grease, a thermal pad or a phase change thermal pad thickness 0.1-0.15mm is recommended.

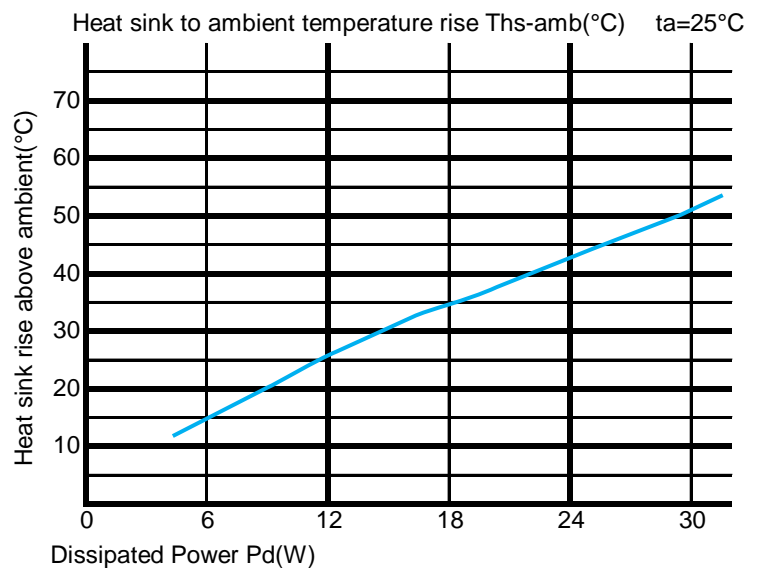
eLED

eLED-7080 Modular Passive LED Star Heat Sink Φ 70mm

The thermal data table

	 <i>eLED-7080</i>
Model No.	eLED7080
Size	Φ70x80mm
Material	AL6063-T5
Finish	Black Anodized
Weight(gr)	329
Thermal Wattage	28.2W
HeatsinkΘs-a²	115563
Heat Sink T_{Rise Above Ambient} (°C/W)	1.77

Dissipated Power Pd(W)	Pd = Pe x (1-ηL)	Heat sink to ambient thermal resistance Rhs-amb (°C/W)	Heat sink to ambient temperature rise Ths-amb (°C)
		eLED-7080	
6		2.5	15
12		2.2	26
18		1.9	34
24		1.8	43
30		1.7	51



Notes:

- Mentioned models are an extraction of full product range.
- For specific mechanical adaptations please contact MingfaTech.
- MingfaTech reserves the right to change products or specifications without prior notice.