



for

LED

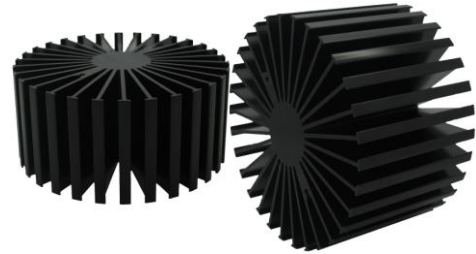


*SimpoleLED*

**SimpoleLED-TRI-11780 for Tridonic Modular Passive LED Cooler  $\Phi$ 117mm**

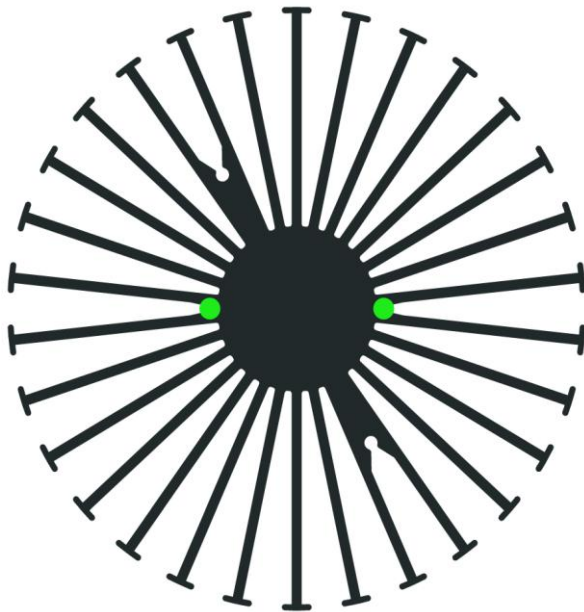
### Features VS Benefits

- \* The SimpoleLED-TRI-11780 Tridonic Modular Passive LED Coolers are specifically designed for luminaires using the Tridonic LED engines.
- \* Mechanical compatibility with direct mounting of the LED engines to the LED cooler and thermal performance matching the lumen packages.
- \* For spotlight and downlight designs from 1700 to 7000 lumen.
- \* Thermal resistance range Rth 0.8°C/W.
- \* Modular design with mounting holes foreseen for direct mounting of Tridonic TALEXXmodule SLE modules engines.
- \* Diameter 117mm - standard height 80mm Other heights on request.
- \* Extruded from highly conductive aluminum.



Zhaga LED engine and radiator assembly is a unified future international standardization

- \* Below you find an overview of Tridonic COB's which standard fit on the SimpoleLED coolers.
- \* In this way mechanical after work and related costs can be avoided, and lighting designers can standardize their designs on a limited number of LED coolers.



**Zhaga Book3 Spot Light LED engines**  
LED COB's for which Zhaga book3 LED Modules holders are available

#### SLE G4 EXCITE LED Modules:

**SLE 19mm 3000lm – Operating mode HO at 1,400 mA**

SLE G4 19mm 3000lm 930 C EXC;

SLE G4 19mm 3000lm 940 C EXC;

**SLE 23mm 5000lm – Operating mode NM**

SLE G4 23mm 5000lm 930 C EXC;

SLE G4 23mm 5000lm 940 C EXC;

#### SLE G4 ESSENCE LED Modules:(Drive Current Max 1400mA)

STARK-SLE-G4-23-5000-830-PURE W/O-C;

STARK-SLE-G4-23-5000-840-PURE W/O-C;

Direct mounting with machine screws M3x6mm;  
Green indicator marks.



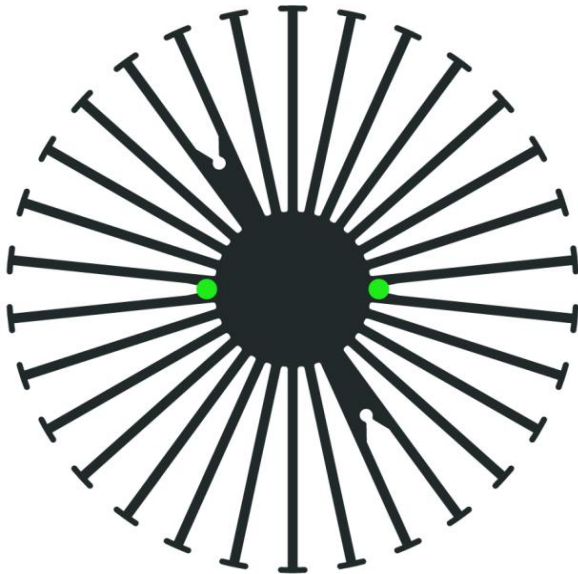
for

LED



*SimpoleD*

**SimpoleD-TRI-11780 for Tridonic Modular Passive LED Cooler  $\Phi$ 117mm**



**SLE G4 ADVANCED LED Modules:**

**SLE 19mm 3000lm – Operating mode HO at 1,400 mA**

SLE G4 19mm 3000lm 830 C ADV;

SLE G4 19mm 3000lm 840 C ADV;

**SLE 23mm 5000lm – Operating mode NM**

SLE G4 23mm 5000lm 830 C ADV;

SLE G4 23mm 5000lm 840 C ADV;

**SLE G4 23mm R SNC LED Modules: (Drive Current Max 500mA)**

SLE G4 23MM 5000LM 830 R SNC;

SLE G4 23MM 5000LM 840 R SNC;

SLE G4 23MM 5000LM 850 R SNC;

SLE G4 23MM 5000LM 930 R SNC;

SLE G4 23MM 5000LM 940 R SNC;

**STARK SLE GEN3 SELECT LED Modules:**

**STARK-SLE-19-3000 – Operating mode HO at 1,400 mA**

STARK-SLE-G3-19-3000-930-SE;

STARK-SLE-G3-19-3000-940-SE;

**STARK-SLE-23-3000 – Operating mode HO at 1,400 mA**

STARK-SLE-G3-23-3000-930-SE;

STARK-SLE-G3-23-3000-940-SE;

**STARK SLE GEN3 CLASSIC EM Modules:**

**STARK-SLE-23-3000 – Operating mode HO at 1,400 mA**

STARK-SLE-G3-23-3000-830-CLA-EM;

STARK-SLE-G3-23-3000-840-CLA-EM;

**STARK SLE GEN3 CLASSIC Modules:**

**STARK-SLE-19-3000 – Operating mode HO at 1,400 mA**

STARK-SLE-G3-19-3000-830-CLA;

STARK-SLE-G3-19-3000-840-CLA;

**STARK-SLE-23-3000 – Operating mode HO at 1,400 mA**

STARK-SLE-G3-23-3000-830-CLA;

STARK-SLE-G3-23-3000-840-CLA;

**STARK SLE GEN3 Food LED Modules:**

**STARK-SLE-19 – Operating mode HO at 1,400 mA**

STARK-SLE-G3-19-GOLD;

STARK-SLE-G3-19-GOLD+;

STARK-SLE-G3-19-FM;

STARK-SLE-G3-19-MEAT+;

**STARK SLE GEN3 ART Modules:**

**STARK-SLE-19 – Operating mode HO at 1,400 mA**

STARK-SLE-G3-PURE-19-930-ART;

**STARK SLE GEN3 FASHION Modules:**

**STARK-SLE-19 – Operating mode HO at 1,400 mA**

STARK-SLE-PURE-G3-19-FASHION;

Direct mounting with machine screws M3x6mm;  
Green indicator marks.





# LED

*SimpoleD*

**SimpoleD-TRI-11780 for Tridonic Modular Passive LED Cooler  $\Phi$ 117mm**

**Mounting Options and Drawings & Dimensions**

Example:SimpoleD-TRI-11780-B-3

Example:SimpoleD-TRI-117 1 - 2 - 3

1 Height (mm)

2 Anodising Color

B-Black

C-Clear

Z-Custom

3 Mounting Options - see graphics for details Combinations available

Ex.order code - 12

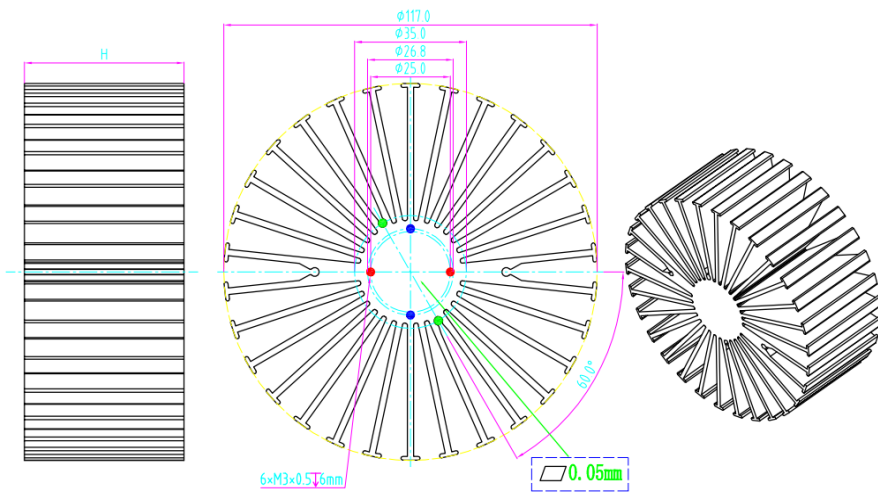
means option 1 and 2 combined

**Notes:**

- Mentioned models are an extraction of full product range.
- For specific mechanical adaptations please contact MingfaTech.
- MingfaTech reserves the right to change products or specifications without prior notice.



MOUNTING OPTION	Module type	Holder NO.	THREAD	THREAD DEPTH	THREAD HOLE DISTANCE
1	SLE G4 10mm R SNC; STARK SLE GEN3 Mini Classic; STARK SLE GEN3 Mini Select; STARK SLE GEN3 Art;	BJB (47.319.6060.50)	M3	6mm	25.0mm/ 2-@180° (Zhaga Book11)
2	SLE G4 Advanced; SLE G4 Excite;	/	M3	6mm	26.8mm/ 2-@180°
3	SLE G4 EXCITE; SLE G4 ESSENCE; SLE G4 ADVANCED; SLE G4 23mm R SNC; STARK SLE GEN3 SELECT; STARK SLE GEN3 CLASSIC EM; STARK SLE GEN3 CLASSIC; STARK SLE GEN3 Food; STARK SLE GEN3 ART; STARK SLE GEN3 FASHION;	/	M3	6mm	35.0mm/ 2-@180° (Zhaga Book3)



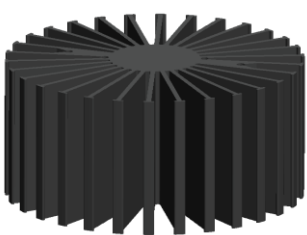
for

LED

*SimpoleD*

*SimpoleD-TRI-11780 for Tridonic Modular Passive LED Cooler Φ117mm*

The thermal data table

	 <i>SimpoleD-11780</i>
<b>Model No.</b>	<b>SimpoleD-TRI-11780</b>
<b>Size</b>	<b>Φ117xH80mm</b>
<b>Material</b>	<b>AL6063-T5</b>
<b>Finish</b>	<b>Black Anodized</b>
<b>Weight(g)</b>	<b>774.0</b>
<b>Thermal Wattage</b>	<b>60.7W</b>
<b>HeatsinkOs-a<sup>2</sup></b>	<b>231490</b>
<b>Heat Sink T Rise Above Ambient</b>	<b>0.8</b>

Dissipated Power Pd(W)	Pd = Pe x (1-ηL)	Heat sink to ambient thermal resistance Rhs-amb (°C/W)	Heat sink to ambient temperature rise Ths-amb (°C)
		SimpoleD-TRI-11780	SimpoleD-TRI-11780
15.0		1.01	15.2
30.0		0.88	26.4
45.0		0.80	36.1
60.0		0.75	45.2
75.0		0.71	53.8
90.0		0.68	62.0

