

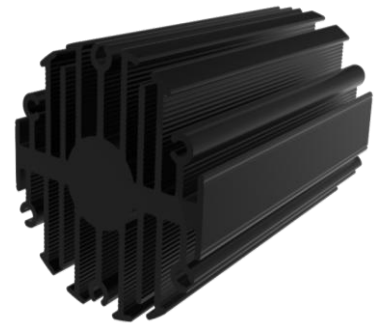


eLED

eLED-SAM-4680 Samsung Modular Passive Star LED Heat Sink  $\Phi$ 46mm

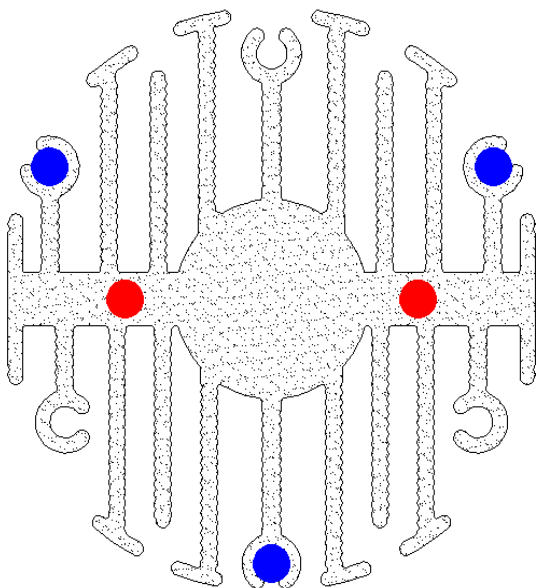
### Features VS Benefits

- \* The eLED-SAM-4680 Samsung Modular Passive Star LED Heat Sinks are specifically designed for luminaires using the Samsung LED engines.
- \* Mechanical compatibility with direct mounting of the LED engines to the LED cooler and thermal performance matching the lumen packages.
- \* For spotlight and downlight designs from 600 to 1600 lumen.
- \* Thermal resistance range  $R_{th}$  3.8°C/W.
- \* Modular design with mounting holes foreseen for direct mounting of Samsung COB LED engines.
- \* Diameter 46.5mm - standard height 80mm Other heights on request.
- \* Extruded from highly conductive aluminum.



### Zhaga LED engine and radiator assembly is a unified future international standardization

- \* Below you find an overview of Samsung COB's and LED modules which standard fit on the eLED Star LED Heat Sinks.
- \* In this way mechanical after work and related costs can be avoided, and lighting designers can standardize their designs on a limited number of Star LED Heat Sinks.



### Samsung LED Modules Mounting indicator marks overview

#### For the LC013 B LED engines.

- SPHWW1HDNA27YHW31F;
- SPHWW1HDNA27YHV31F;
- SPHWW1HDNA27YHU31F;
- SPHWW1HDNA27YHT31F;
- SPHWW1HDNA25YHW31F;
- SPHWW1HDNA25YHV31F;
- SPHWW1HDNA25YHU31F;
- SPHWW1HDNA25YHT31F;
- SPHCW1HDNA25YHRT1F;

Direct mounting with machine screws M3x6mm;  
Red indicator marks.

Blue indicator marks.  
Direct mounting with machine screws M3x6mm;



# LED



eLED

eLED-SAM-4680 Samsung Modular Passive Star LED Heat Sink  $\Phi$ 46mm

## Mounting Options and Drawings & Dimensions

Example:eLED-SAM-4680-B-1

Example:eLED-SAM-46 **1** - **2** - **3**

**1** Height (mm)

**2** Anodising Color

B-Black

C-Clear

Z-Custom

**3** Mounting Options - see graphics for details Combinations available

Ex.order code - 12

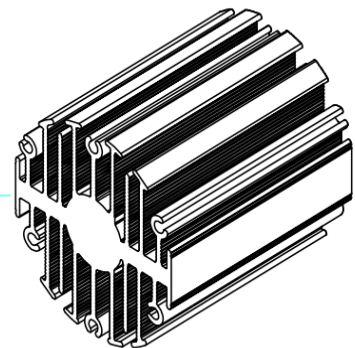
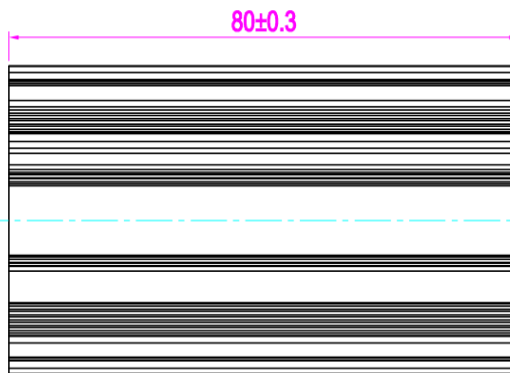
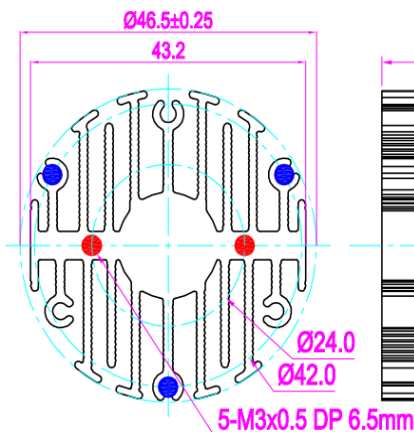
means option 1 and 2 combined

### Notes:

- Mentioned models are an extraction of full product range.
- For specific mechanical adaptations please contact MingfaTech.
- MingfaTech reserves the right to change products or specifications without prior notice.



| MOUNTING OPTION | Module type | Holder NO. | THREAD | THREAD DEPTH | THREAD HOLE DISTANCE |
|-----------------|-------------|------------|--------|--------------|----------------------|
| 1               | LC013       | /          | M3     | 6.5mm        | 24.0mm/ 2-@180°      |
| 2               | LC013       | /          | M3     | 6.5mm        | 42.0mm/ @3-120°      |



eLED

eLED-SAM-4680 Samsung Modular Passive Star LED Heat Sink  $\Phi$ 46mm

The thermal data table

|                                       |   |
|---------------------------------------|---|
|                                       | <br><i>eLED-4680</i> |
| <b>Model No.</b>                      | <b>eLED-SAM-4680</b>  |
| <b>Size</b>                           | <b><math>\Phi</math>46.5xH80mm</b>  |
| <b>Material</b>                       | <b>AL6063-T5</b>  |
| <b>Finish</b>                         | <b>Black Anodized</b>   |
| <b>Weight(g)</b>                      | <b>161.5</b>  |
| <b>Thermal Wattage</b>                | <b>13.0W</b>  |
| <b>HeatsinkOs-a<sup>2</sup></b>       | <b>65150</b>  |
| <b>Heat Sink T Rise Above Ambient</b> | <b>3.8</b>  |

| Dissipated Power Pd(W) | Pd =<br>Pe x (1- $\eta$ L) | Heat sink to ambient thermal resistance Rhs-amb ( $^{\circ}$ C/W) | Heat sink to ambient temperature rise Ths-amb ( $^{\circ}$ C) |
|------------------------|----------------------------|---|---|
|                        |                            | eLED-SAM-4680   |   |
| 3                      |                            | 4.67  | 14  |
| 6                      |                            | 4.67  | 28  |
| 9                      |                            | 4.33  | 39  |
| 12                     |                            | 4.00  | 48  |
| 15                     |                            | 3.73  | 56  |

