



for

LED

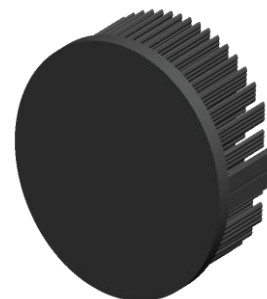


xLED

xLED-7030 Pin Fin LED Heat Sink Φ 70mm

Features VS Benefits

- * Mechanical compatibility with direct mounting of the LED modules to the LED cooler and thermal performance matching the lumen packages.
 - * Thermal resistance range Rth 3.3°C/W.
 - * Modular design with mounting holes foreseen for direct mounting of a wide range of LED modules and COB's:
 - * Diameter 70mm - Standard height 30mm , Other heights on request.
 - * Forged from highly conductive aluminum.
- 2 standard colors - clear anodized - black anodized
- Zhaga Book 3 Spot Light Modules Edison , Osram , Xicato , Bridelux , Citizen , Cree , SHARP , Philips , Tridonic , Vossloh-Schwabe, Seoul , LG , Lustrous , Samsung , Prolight .



- 1) Xicato XSM, XIM,XTM;
- 2) Bridelux ES Star,Array V6,V8,V10 and Vero 10 Array LED engines;
- 3) Philips Fortimo SLM Modules.
- 4) Citizen CLL022-CLU024, CLL026-CLU028, CLL032-CLU034, CLL036-CLU038;
- 5) Cree XLamp CXA13xx, CXA15xx;
- 6) SHARP Mini Zenigata LED engines;
- 7) Seoul Semiconductor ZC4, ZC6;
- 8) Tridonic TALEXXmodule SLE modules;
- 9) LG Innotek LEMWM18 10W, 13W;
- 10) Edison EdiLex SLM and EdiLex II COB LED engines;
- 11) Lustrous LUSTRON 6 series LL604F, LL608D, LL613F, LL620F;
- 12) Prolight Opto PABS, PABA, PACB, PANA;
- 13) Luminus CLM-9;CXM-9;CHM-9 COB LED engines;
- 14) Osram SOLERIQ P6,SOLERIQ S13 and PrevaLED Core LED engines;
- 15) Vossloh-Schwabe LUGA Shop and LUGA C LED engines;
- 16) Samsung LC013 LED engines;

Order Information

Example:xLED-7030-B-#

Example:xLED-7030 - **1**

- 1** Anodising Color
- B-Black
- C-Clear
- Z-Custom

MingFa recommends the use of a high Thermal conductive interface between the LED Module and the LED cooler. Either thermal grease, A thermal pad or a phase change thermal pad Thickness 0.1-0.15mm is recommended.



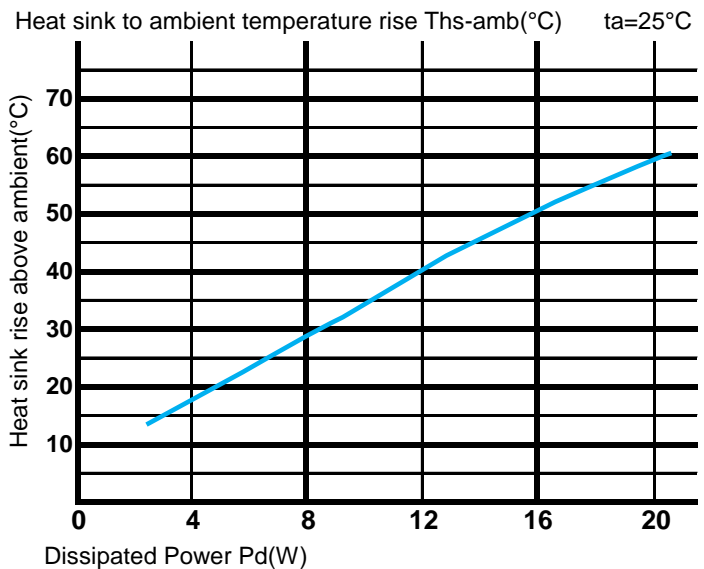
xLED

xLED-7030 Pin Fin LED Heat Sink Φ 70mm

The thermal data table

	<p><i>xLED-7030</i></p>
Model No.	xLED-7030
Size	Φ70xH30mm
Material	AL1070
Finish	Black Anodized
Weight(g)	106
Thermal Wattage	15.0W
HeatsinkΘs-a²	54786
Heat Sink RiseT <small>Rise Above Ambient ($^{\circ}$C/W)</small>	3.3

	Pd = Pe x (1- η L)	Heat sink to ambient thermal resistance Rhs-amb ($^{\circ}$ C/W)	Heat sink to ambient temperature rise Ths-amb ($^{\circ}$ C)
		xLED-7030	
Dissipated Power Pq(W)	4.0	4.5	18.0
	8.0	3.6	29.0
	12.0	3.4	41.0
	16.0	3.2	51.0
	20.0	3.0	59.0



Notes:

- Mentioned models are an extraction of full product range.
- For specific mechanical adaptations please contact MingfaTech.
- MingfaTech reserves the right to change products or specifications without prior notice.