

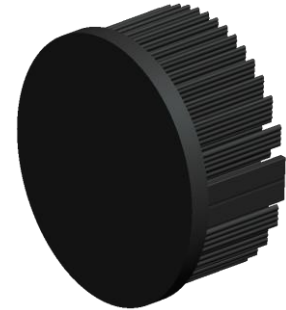


**xLED**

**xLED-6030 Pin Fin LED Heat Sink Φ60mm**

### Features VS Benefits

- \* Mechanical compatibility with direct mounting of the LED modules to the LED cooler and thermal performance matching the lumen packages.
  - \* Thermal resistance range Rth 4.2°C/W.
  - \* Modular design with mounting holes foreseen for direct mounting of a wide range of LED modules and COB's:
  - \* Diameter 60mm - Standard height 30mm , Other heights on request.
  - \* Forged from highly conductive aluminum.
- 2 standard colors - clear anodized - black anodized
- Zhaga Book 3 Spot Light Modules Edison , Osram , Xicato , Bridelux , Citizen , Cree , Seoul , Philips , Tridonic , Vossloh-Schwabe, LG ,Lustrous ,Prolight ,Luminus ,SHARP ,Samsung .



- 1) Xicato XSM, XIM,XTM;
- 2) Bridelux ES Star,Array V6,V8,V10 and Vero 10 Array LED engines;
- 3) Citizen CLL022-CLU024, CLL026-CLU028, CLL032-CLU034, CLL036-CLU038;
- 4) Cree XLamp CXA13xx, CXA15xx;
- 5) LG Innotek LEMWM18 10W, 13W;
- 6) Seoul Semiconductor ZC4, ZC6;
- 7) Tridonic TALEXXmodule SLE modules;
- 8) Philips Fortimo SLM Modules.
- 9) Edison EdiLex SLM and EdiLex II COB LED engines;
- 10) Lustrous LUSTRON 6 series LL604F, LL608D, LL613F, LL620F;
- 11) Prolight Opto PABS, PABA, PACB, PANA;
- 12) Luminus CLM-9;CXM-9;CHM-9 COB LED engines;
- 13) SHARP Mini Zenigata LED engines;
- 14) Vossloh-Schwabe LUGA Shop and LUGA C LED engines;
- 15) Samsung LC013 LED engines;
- 16) Osram SOLERIQ P6,SOLERIQ S13 and PrevalLED Core LEDEngines;



### Order Information

Example:xLED-6030-B-#

Example:xLED-6030-**1**


- 1** Anodising Color
  - B-Black
  - C-Clear
  - Z-Custom

MingFa recommends the use of a high Thermal conductive interface between the LED Module and the LED cooler. Either thermal grease, A thermal pad or a phase change thermal pad Thickness 0.1-0.15mm is recommended.

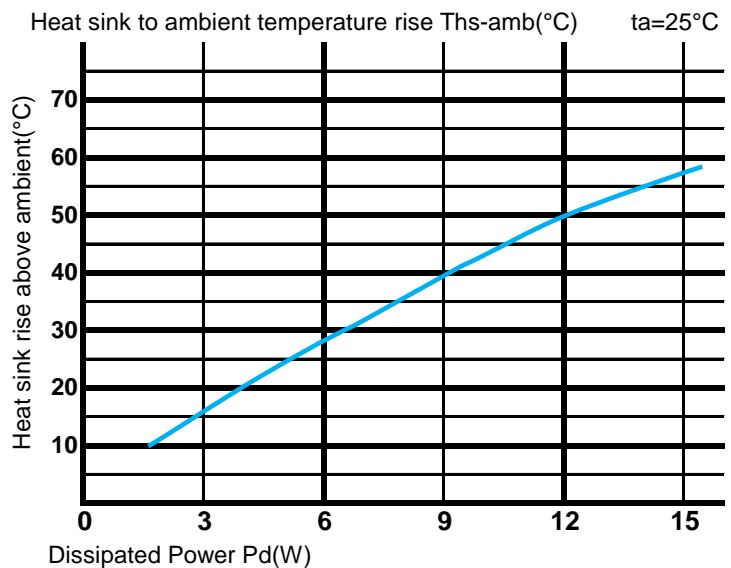
*xLED*

**xLED-6030 Pin Fin LED Heat Sink Φ60mm**

The thermal data table

	
	<i>xLED-6030</i>
<b>Model No.</b>	<b>xLED-6030</b>
<b>Size</b>	<b>Φ60xH30mm</b>
<b>Material</b>	<b>AL1070</b>
<b>Finish</b>	<b>Black Anodized</b>
<b>Weight(g)</b>	<b>80</b>
<b>Thermal Wattage</b>	<b>12.0W</b>
<b>HeatsinkOs-a<sup>2</sup></b>	<b>40973</b>
<b>Heat Sink RiseT<sub>Rise Above Ambient</sub> (°C/W)</b>	<b>4.2</b>

Dissipated Power Pd(W)	Pd = Pe x (1-ηL)	Heat sink to ambient thermal resistance Rhs-amb (°C/W)	Heat sink to ambient temperature rise Ths-amb (°C)
		xLED-6030	
3.0		5.3	16.0
6.0		4.5	27.0
9.0		4.3	39.0
12.0		4.2	50.0
15.0		3.8	57.0



Notes:

- Mentioned models are an extraction of full product range.
- For specific mechanical adaptations please contact MingfaTech.
- MingfaTech reserves the right to change products or specifications without prior notice.