



for

LED

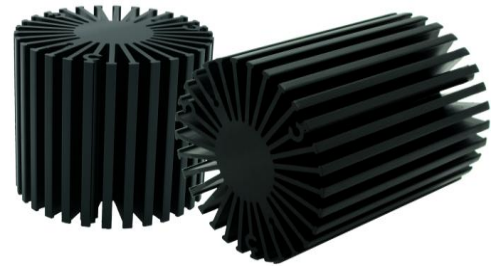


*SimpoLED*

**SimpoLED-TRI-5870 for Tridonic Modular Passive LED Cooler  $\Phi$ 58mm**

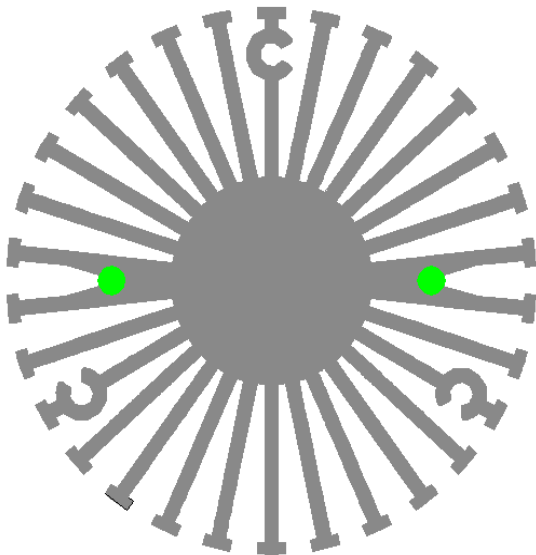
### Features VS Benefits

- \* The SimpLED-TRI-5870 Tridonic Modular Passive LED Coolers are specifically designed for luminaires using the Tridonic LED engines.
- \* Mechanical compatibility with direct mounting of the LED engines to the LED cooler and thermal performance matching the lumen packages.
- \* For spotlight and downlight designs from 500 to 1800 lumen.
- \* Thermal resistance range  $R_{th}$  2.9°C/W.
- \* Modular design with mounting holes foreseen for direct mounting of Tridonic TALEX module SLE Modules engines.
- \* Diameter 58mm - standard height 70mm Other heights on request.
- \* Extruded from highly conductive aluminum.



### Zhaga LED engine and radiator assembly is a unified future international standardization

- \* Below you find an overview of Tridonic COB's which standard fit on the Cool-LED SimpLED coolers.
- \* In this way mechanical after work and related costs can be avoided, and lighting designers can standardize their designs on a limited number of LED coolers.



Zhaga Book3 Spot Light LED engines  
LED COB's for which Zhaga book3 LED Modules holders are available

#### STARK SLE GEN3 Classic LED Modules:

**STARK-SLE-19-2000 – Operating mode HE at 350 mA**

STARK-SLE-G3-19-2000-830-CLA;

STARK-SLE-G3-19-2000-840-CLA;

**STARK-SLE-19-3000 – Operating mode HE at 350 mA**

STARK-SLE-G3-19-3000-830-CLA;

STARK-SLE-G3-19-3000-840-CLA;

#### STARK SLE GEN3 Classic EM LED Modules:

**STARK-SLE-19-2000 – Operating mode HE at 350 mA**

STARK-SLE-G3-19-2000-830-CLA-EM;

STARK-SLE-G3-19-2000-840-CLA-EM;

Direct mounting with machine screws M3x6mm;  
Green indicator marks.



for

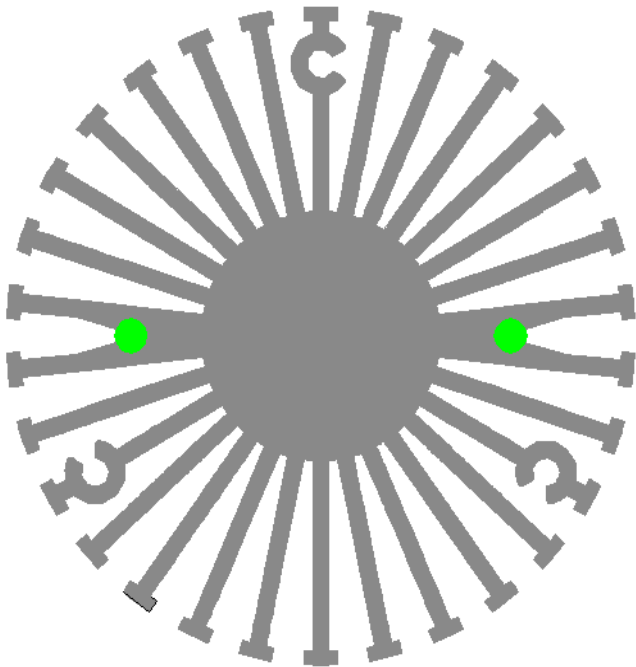
LED



*SimpoleD*

**SimpoleD-TRI-5870 for Tridonic Modular Passive LED Cooler  $\Phi$ 58mm**

**TRIDONIC**  
enlightening your ideas



**STARK SLE GEN3 Mini Classic LED Modules:**  
(BJB Holder:47.319.2021.50)

STARK-SLE-17-2000 – Operating mode HE at 350 mA

STARK-SLE-PURE-G3-17-2000-830-CLA;

STARK-SLE-PURE-G3-17-2000-840-CLA;

**STARK SLE GEN3 Select LED Modules:**

STARK-SLE-19-2000 – Operating mode HE at 350 mA

STARK-SLE-G3-19-2000-930-SEL;

STARK-SLE-G3-19-2000-940-SEL;

STARK-SLE-19-3000 – Operating mode HE at 350 mA

STARK-SLE-G3-23-3000-930-SEL;

STARK-SLE-G3-23-3000-940-SEL;

**STARK SLE GEN3 Mini Select LED Modules:**  
(BJB Holder:47.319.2021.50)

STARK-SLE-17-2000 – Operating mode HE at 350 mA

STARK-SLE-PURE-G3-17-2000-930-SEL;

STARK-SLE-PURE-G3-17-2000-940-SEL;

**STARK SLE GEN3 Art LED Modules:**

STARK-SLE-19 – Operating mode HE at 350 mA

STARK-SLE-G3-PURE-19-930-ART;

**STARK SLE GEN3 Fashion LED Modules:**

STARK-SLE-19 – Operating mode HE at 350 mA

STARK-SLE-PURE-G3-19-FASHION;

**STARK SLE GEN3 Food LED Modules:**

STARK-SLE-19 – Operating mode HE at 350 mA

STARK-SLE-G3-19-GOLD;

STARK-SLE-G3-19-GOLD+;

STARK-SLE-G3-19-FM;

STARK-SLE-G3-19-MEAT+;

Direct mounting with machine screws M3x6mm;  
Green indicator marks.

Tridonic LED Modules directly Mounting Options

**SLE G4 Advanced LED Modules:**

SLE 15mm 2000lm – Operating mode HE at 350 mA

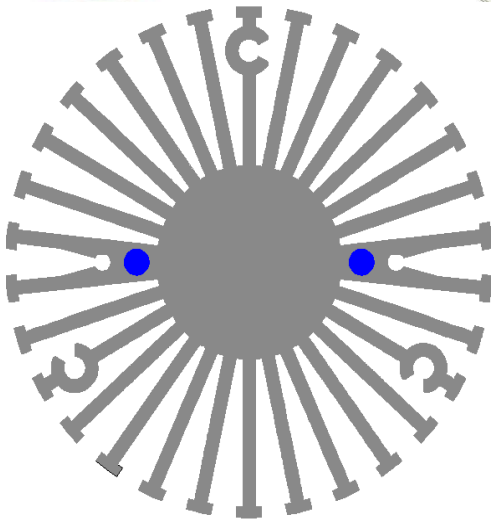
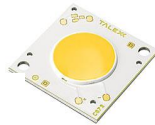
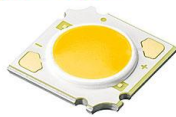
SLE G4 15mm 2000lm 830 C ADV;

SLE G4 15mm 2000lm 840 C ADV;

Direct mounting with machine screws M3x6mm;  
Blue indicator marks.

*SimpLED*

**SimpLED-TRI-5870 for Tridonic Modular Passive LED Cooler  $\Phi$ 58mm**



**SLE G4 Excite LED Modules:**

- SLE 15mm 2000lm – Operating mode HE at 350 mA
- SLE G4 15mm 2000lm 930 C EXC;
- SLE G4 15mm 2000lm 940 C EXC;

Direct mounting with machine screws M3x6mm;  
Blue indicator marks.

**SLE G4 10mm R SNC LED Modules: (BJB Holder:47.319.6060.50)**

- SLE G4 10mm 800lm 827 R SNC;
- SLE G4 10mm 800lm 830 R SNC;
- SLE G4 10mm 800lm 927 R SNC;
- SLE G4 10mm 800lm 930 R SNC;
- SLE G4 10mm 1200lm 827 R SNC;
- SLE G4 10mm 1200lm 830 R SNC;
- SLE G4 10mm 1200lm 840 R SNC;
- SLE G4 10mm 1200lm 927 R SNC;
- SLE G4 10mm 1200lm 930 R SNC;
- SLE G4 10mm 1200lm 940 R SNC;

**STARK SLE GEN3 Mini Classic LED Modules: (BJB Holder:47.319.6060.50)**

- STARK-SLE-10-1000 – Operating mode HO at 700 mA
- STARK-SLE-PURE-G3-10-1000-827-CLA;
- STARK-SLE-PURE-G3-10-1000-830-CLA;
- STARK-SLE-PURE-G3-10-1000-840-CLA;

**STARK SLE GEN3 Mini Select LED Modules: (BJB Holder:47.319.6060.50)**

- STARK-SLE-10-1000 – Operating mode HO at 700 mA
- STARK-SLE-PURE-G3-10-1000-930-SEL;
- STARK-SLE-PURE-G3-10-1000-940-SEL;

**STARK SLE GEN3 Art LED Modules: (BJB Holder:47.319.6060.50)**

- STARK-SLE-10 – Operating mode HO at 700 mA
- STARK-SLE-G3-PURE-10-930-ART;

Direct mounting with machine screws M3x6mm;  
Red indicator marks.

*SimpoleD*

**SimpoleD-TRI-5870 for Tridonic Modular Passive LED Cooler  $\Phi$ 58mm**

**Mounting Options and Drawings & Dimensions**

Example: SimpoleD-TRI-5870-B-3

Example: SimpoleD-TRI-58 **1** - **2** - **3**

**1** Height (mm)

**2** Anodising Color

B-Black

C-Clear

Z-Custom

**3** Mounting Options - see graphics for details Combinations available

Ex.order code - 12

means option 1 and 2 combined

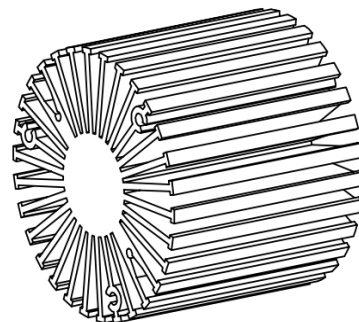
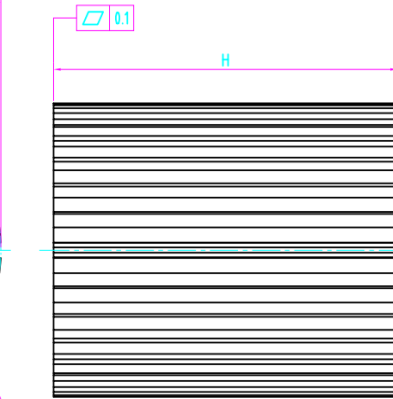
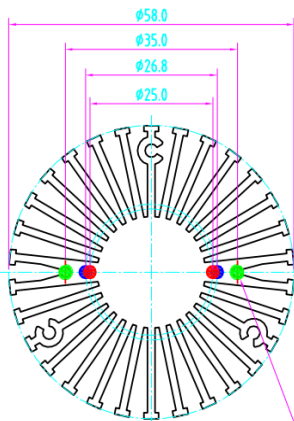
Notes:

- Mentioned models are an extraction of full product range.
- For specific mechanical adaptations please contact MingfaTech.
- MingfaTech reserves the right to change products or specifications without prior notice.



**Note !: option 1 and option 2 can't not be combined**

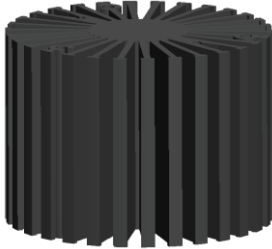
MOUNTING OPTION	Module type	Holder NO.	THREAD	THREAD DEPTH	THREAD HOLE DISTANCE
1	SLE G4 10mm R SNC; STARK SLE GEN3 Mini Classic; STARK SLE GEN3 Mini Select; STARK SLE GEN3 Art;	BJB:47.319.6060.50 Zhaga Book11	M3	6mm	25.0mm/ 2-@180° (Zhaga Book11)
2	SLE G4 Advanced; SLE G4 Excite;	/	M3	6mm	26.8mm/ 2-@180°
3	STARK SLE GEN3 Mini Classic; STARK SLE GEN3 Mini Select;	BJB:47.319.2021.50 Zhaga Book3	M3	6mm	35.0mm/ 2-@180° (Zhaga Book3)
	STARK SLE GEN3 Classic; STARK SLE GEN3 Classic EM; STARK SLE GEN3 Select; STARK SLE GEN3 Art; STARK SLE GEN3 Fashion; STARK SLE GEN3 Food;	/			



*SimpoleD*

**SimpoleD-TRI-5870 for Tridonic Modular Passive LED Cooler  $\Phi$ 58mm**

The thermal data table

	 <i>SimpoleD-5870</i>
<b>Model No.</b>	<b>SimpoleD-TRI-5870</b>
<b>Size</b>	<b><math>\Phi</math>58xH70mm</b>
<b>Material</b>	<b>AL6063-T5</b>
<b>Finish</b>	<b>Black Anodized</b>
<b>Weight(g)</b>	<b>244.0</b>
<b>Thermal Wattage</b>	<b>15.5w</b>
<b>HeatsinkOs-a<sup>2</sup></b>	<b>90020</b>
<b>Heat Sink T<sub>Rise</sub> Above Ambient</b>	<b>2.9</b>

Disipated Power Pd(W)	Pd = Pe x (1-ηL)	
	Heat sink to ambient thermal resistance Rhs-amb (°C/W)	Heat sink to ambient temperature rise Ths-amb (°C)
	SimpoleD-TRI-5870	SimpoleD-TRI-5870
4.0	4.00	16.0
8.0	3.50	28.0
12.0	3.12	37.5
16.0	2.90	46.5
20.0	2.76	55.3

