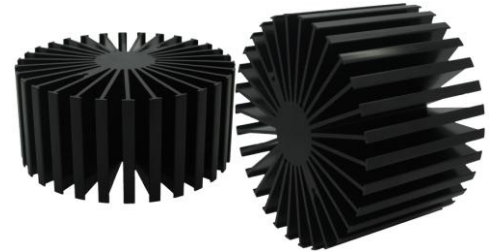


SimpoleD

SimpoleD-OSR-11750 for OSRAM Modular Passive LED Cooler Φ 117mm

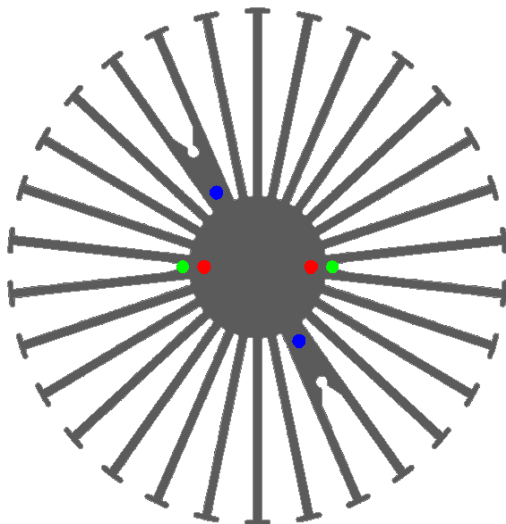
Features VS Benefits

- * The SimpoleD-OSR-11750 OSRAM Modular Passive LED Coolers are specifically designed for luminaires using the OSRAM LED engines.
- * Mechanical compatibility with direct mounting of the LED engines to the LED cooler and thermal performance matching the lumen packages.
- * For spotlight and downlight designs from 1700 to 5000 lumen.
- * Thermal resistance range R_{th} 0.9°C/W.
- * Modular design with mounting holes foreseen for direct mounting of OSRAM PrevaLED Core , SOLERIQ P , SOLERIQ E and SOLERIQ S LED engines.
- * Diameter 117mm - standard height 50mm Other heights on request.
- * Extruded from highly conductive aluminum.



Zhaga LED engine and radiator assembly is a unified future international standardization

- * Below you find an overview of OSRAM engines COB's and LED modules which standard fit on the SimpoleD coolers.
- * In this way mechanical after work and related costs can be avoided, and lighting designers can standardize their designs on a limited number of LED coolers.



OSRAM LED engines Mounting Options

Osram PrevaLED Core AC LED modules.

PL-CORE AC -2000-827;
 PL-CORE AC -2000-830;
 PL-CORE AC -2000-840;
 LEP -2000-827-C-AC;
 LEP -2000-830-C-AC;
 LEP -2000-840-C-AC;

Osram PrevaLED Core Z3 LED modules.

PL-CORE -3000-930-Z3;
 PL-CORE -5000-830-Z3;
 PL-CORE -5000-840-Z3;
 PL-CORE -5000-930-Z3;

Osram PrevaLED Core Z4 LED modules.

PL-CORE-Z4 -3000-930;
 PL-CORE-Z4 -4500-930;
 PL-CORE-Z4 -5000-830;
 PL-CORE-Z4 -5000-835;
 PL-CORE-Z4 -5000-840;

Zhaga Book3

Green indicator marks:
 Direct mounting with machine screws M3x6mm;

Osram SOLERIQ P13 modules.

GW MAGMB1.CM-SUTR-27S3;
 GW MAGMB1.CM-TPTS-30S3;
 GW MAGMB1.CM-TPTS-35S3;
 GW MAGMB1.CM-TQTT-40S3;
 GW MAGMB1.EM-TQTT-27S3;
 GW MAGMB1.EM-TRTU-30S3;
 GW MAGMB1.EM-TSUP-35S3;
 GW MAGMB1.EM-TSUP-40S3;
 GW MAGMB1.EM-TSUP-50S3;

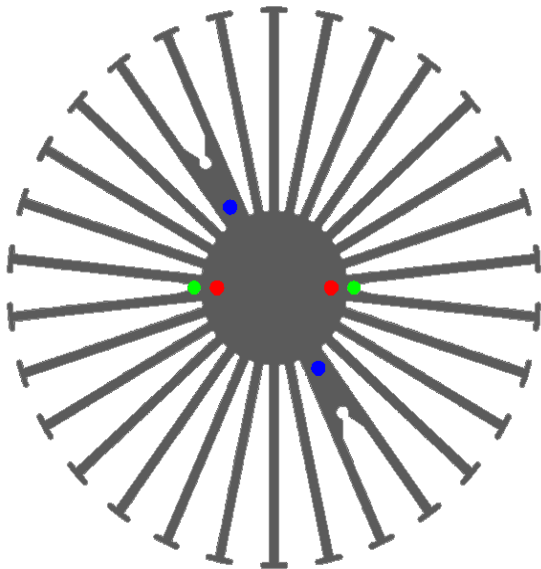
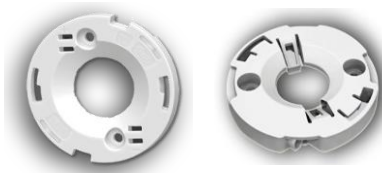
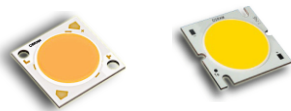
Zhaga Book3 Green indicator marks:

BJB holder:47.319.2131.50 ;
 IDEAL holder:50-2101CR ;
 Direct mounting with machine screws M3x6mm.

SimpoleD

SimpoleD-OSR-11750 for OSRAM Modular Passive LED Cooler Φ 117mm

OSRAM



OSRAM LED engines Mounting Options

Osram SOLERIQ S19 LED modules.

GW KAHJB1.EM-SSSU-27S3;	GW KAHJB1.EM-SQSS-27S3;
GW KAHJB1.EM-SSSU-30S3;	GW KAHJB1.EM-SQSS-30S3;
GW KAHJB1.EM-STTP-35S3;	GW KAHJB1.EM-SRST-35S3;
GW KAHJB1.EM-STTP-40S3;	GW KAHJB1.EM-SRST-40S3;

GW KAHLB1.EM-TQTS-27S3;	GW KAHLB1.EM-SUTQ-27S3;
GW KAHLB1.EM-TQTT-30S3;	GW KAHLB1.EM-TPTR-30S3;
GW KAHLB1.EM-TRTT-35S3;	GW KAHLB1.EM-TPTR-35S3;
GW KAHLB1.EM-TRTU-40S3;	GW KAHLB1.EM-TQTS-40S3;

GW KAHNB1.CM-TSTU-27S3;	GW KAHNB1.EM-TUUQ-27S3;
GW KAHNB1.CM-TSTU-30S3;	GW KAHNB1.EM-TUUR-30S3;
GW KAHNB1.CM-TTUP-35S3;	GW KAHNB1.EM-UPUR-35S3;
GW KAHNB1.CM-TUUQ-40S3;	GW KAHNB1.EM-UPUS-40S3;

Zhaga Book3 Green indicator marks:

AAG.STUCCHI holder:8503-G2 ;

BJB holder:47.319.2170.50

Direct mounting with machine screws M3x6mm;

Osram SOLERIQ P9 modules.

GW MAFJB1.EM-RTSQ-27S3;	GW MAFJB1.CM-RSSP-27S3;
GW MAFJB1.EM-RUSR-30S3;	GW MAFJB1.CM-RTSQ-30S3;
GW MAFJB1.EM-RUSS-35S3;	GW MAFJB1.CM-RTSR-35S3;
GW MAFJB1.EM-SPST-40S3;	GW MAFJB1.CM-RUSS-40S3;
GW MAFJB1.EM-SPST-50S3;	

Zhaga Book11 Red indicator marks:

BJB holder:47.319.6200.50 ;

AAG.STUCCHI holder:8501-G2 ;

Direct mounting with machine screws M3x6mm;

Osram SOLERIQ E45 LED modules.

GW KALRB3.EM-TSTU-27H4;
GW KALRB3.EM-TSTU-30H4;
GW KALRB3.EM-TUUQ-40H4;
GW KALRB3.EM-TUUQ-50H4;
GW KALRB3.EM-TUUQ-60H4;
GW KALRB3.EM-TUUQ-65H4;

Directly Mounting;

Blue indicator marks.

Direct mounting with machine screws M3x6mm;

SimpoleD

SimpoleD-OSR-11750 for OSRAM Modular Passive LED Cooler Φ 117mm

Mounting Options and Drawings & Dimensions

Example: SimpoleD-OSR-11750-B-3

Example: SimpoleD-OSR-117 **1** - **2** - **3**

1 Height (mm)

2 Anodising Color

B-Black

C-Clear

Z-Custom

3 Mounting Options - see graphics for details Combinations available

Ex.order code - 12

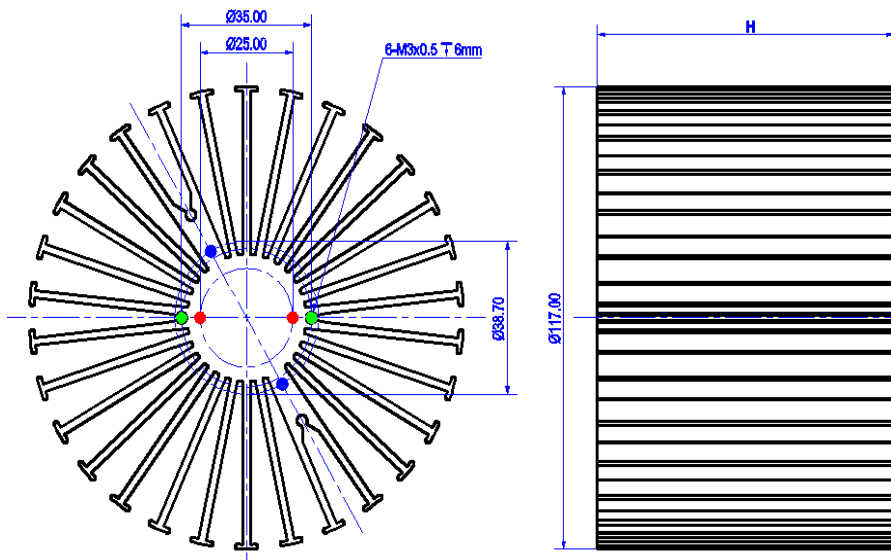
means option 1 and 2 combined

Notes:

- Mentioned models are an extraction of full product range.
- For specific mechanical adaptations please contact MingfaTech.
- MingfaTech reserves the right to change products or specifications without prior notice.



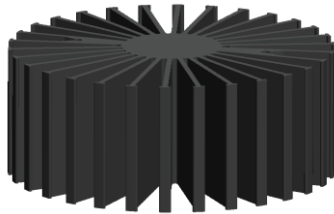
MOUNTING OPTION	Module type	Holder NO.	THREAD	THREAD DEPTH	THREAD HOLE DISTANCE
1	SOLERIQ P9	AAG.STUCCHI:8501-G2	M3	6mm	25.0mm/ 2-@180°
		BJB:47.319.6200.50			
2	PrevaLED Core AC PrevaLED Core Z3 PrevaLED Core Z4	/	M3	6mm	35.0mm/ 2-@180°
	SOLERIQ S19	AAG.STUCCHI:8503-G2			
		BJB:47.319.2170.50			
	SOLERIQ p13	IDEAL:50-2101CR			
BJB:47.319.2131.50					
3	SOLERIQ E45	/	M3	6mm	38.7mm/ 2-@180°



SimpoleD

SimpoleD-OSR-11750 for OSRAM Modular Passive LED Cooler Φ 117mm

The thermal data table

	 <i>SimpoleD-11750</i>
Model No.	SimpoleD-OSR-11750
Size	Φ117xH50mm
Material	AL6063-T5
Finish	Black Anodized
Weight(gr)	484.0
Thermal Wattage	49.2W
HeatsinkOs-a²	147370
Heat Sink T_{Rise} Above Ambient	0.9

Pd = Pe x (1-ηL)	Heat sink to ambient thermal resistance Rhs-amb (°C/W)	Heat sink to ambient temperature rise Ths-amb (°C)
	SimpoleD-OSR-11750	SimpoleD-OSR-11750
Dissipated Power Pd(W)	8.0	10.8
	16.0	18.5
	24.0	25.3
	32.0	31.5
	40.0	37.5
	48.0	43.0
	56.0	49.0

