



for

LED

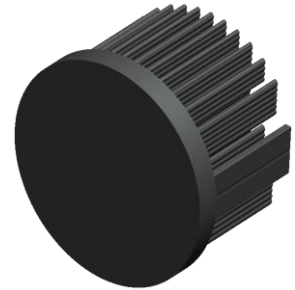


xLED

xLED-4530 Pin Fin LED Heat Sink  $\Phi$ 45mm

### Features VS Benefits

- \* Mechanical compatibility with direct mounting of the LED modules to the LED cooler and thermal performance matching the lumen packages.
  - \* Thermal resistance range Rth 6.4°C/W.
  - \* Modular design with mounting holes foreseen for direct mounting of a wide range of LED modules and COB's:
  - \* Diameter 45mm - Standard height 30mm , Other heights on request.
  - \* Forged from highly conductive aluminum.
- 2 standard colors - clear anodized - black anodized
- Zhaga Book 3 Spot Light Modules Edison , Osram ,Xicato ,Bridelux ,Citizen ,Cree , Prolight , Philips , LG , Tridonic , Vossloh-Schwabe, Seoul , Lustrous , Luminus ,SHARP , Samsung.....



- 1) Xicato XSM, XIM,XTM;
- 2) Bridelux ES Star,Array V6,V8,V10 and Vero 10 Array LED engines;
- 3) Citizen CLL022-CLU024,CLL026-CLU028, CLL032-CLU034,CLL036-CLU038,;
- 4) Philips Fortimo SLM Modules.
- 5) Cree XLamp CXA13xx, CXA15xx;
- 6) LG Innotek LEMWM18 10W, 13W;
- 7) Seoul Semiconductor ZC4, ZC6;
- 8) Tridonic TALEXXmodule SLE modules;
- 9) Osram SOLERIQ P6,SOLERIQ S13 and PrevaLED Core LED engines;
- 10) Edison EdiLex SLM and EdiLex II COB LED engines;
- 11) Lustrous LUSTRON 6 series LL604F, LL608D, LL613F, LL620F;
- 12) Prolight Opto PABS, PABA, PACB, PANA;
- 13) Luminus CLM-9;CXM-9;CHM-9 COB LED engines;
- 14) SHARP Mini Zenigata LED engines;
- 15) Vossloh-Schwabe LUGA Shop and LUGA C LED engines;
- 16) Samsung LC013 LED engines;



### Order Information

Example:xLED-4530-B-#

Example:xLED-4530-**1**

- 1** Anodising Color
- B-Black
- C-Clear
- Z-Custom

MingFa recommends the use of a high Thermal conductive interface between the LED Module and the LED cooler. Either thermal grease, A thermal pad or a phase change thermal pad Thickness 0.1-0.15mm is recommended.

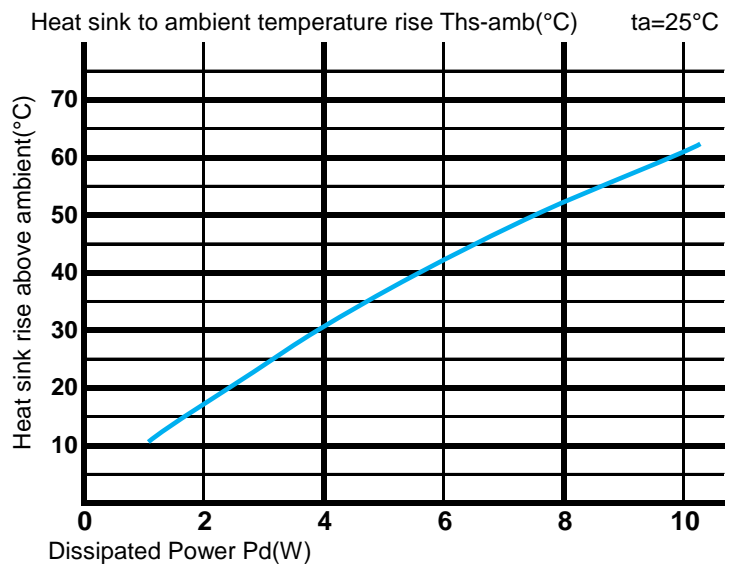
*xLED*

**xLED-4530 Pin Fin LED Heat Sink  $\Phi$ 45mm**

**The thermal data table**

<b>Model No.</b>	<b>xLED-4530</b>
<b>Size</b>	<b><math>\Phi</math>45xH30mm</b>
<b>Material</b>	<b>AL1070</b>
<b>Finish</b>	<b>Black Anodized</b>
<b>Weight(g)</b>	<b>45</b>
<b>Thermal Wattage</b>	<b>7.8W</b>
<b>Heatsink<math>\Theta</math>s-a<sup>2</sup></b>	<b>22830</b>
<b>Heat Sink RiseT<sub>Rise Above Ambient</sub> (<math>^{\circ}</math>C/W)</b>	<b>6.4</b>

Dissipated Power Pd(W)	Pd = Pe x (1- $\eta$ L)		Heat sink to ambient thermal resistance Rhs-amb ( $^{\circ}$ C/W)	Heat sink to ambient temperature rise Ths-amb ( $^{\circ}$ C)
	2.0	4.0	xLED-4530	
2.0	2.0	4.0	8.50	17.0
4.0	4.0	8.0	7.50	30.0
6.0	6.0	12.0	7.17	43.0
8.0	8.0	16.0	6.63	53.0
10.0	10.0	20.0	6.10	61.0



**Notes:**

- Mentioned models are an extraction of full product range.
- For specific mechanical adaptations please contact MingfaTech.
- MingfaTech reserves the right to change products or specifications without prior notice.