



for

LED

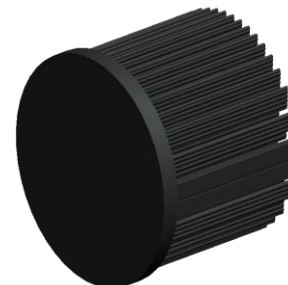


xLED

xLED-6050 Pin Fin LED Heat Sink Φ60mm

Features VS Benefits

- * Mechanical compatibility with direct mounting of the LED modules to the LED cooler and thermal performance matching the lumen packages.
- * Thermal resistance range Rth 3.3°C/W.
- * Modular design with mounting holes foreseen for direct mounting of a wide range of LED modules and COB's:
- * Diameter 60mm - Standard height 50mm , Other heights on request.
- * Forged from highly conductive aluminum.
- 2 standard colors - clear anodized - black anodized
- Zhaga Book 3 Spot Light Modules Edison , Osram , Xicato , Bridelux , Citizen , Cree , Seoul , Philips , Tridonic , Vossloh-Schwabe , Samsung ,LG , Lustrous ,Prolight ,Luminus ,SHARP.....



- 1) Xicato XSM, XIM,XTM;
- 2) Bridelux ES Star,Array V6,V8,V10 and Vero 10 Array LED engines;
- 3) Citizen CLL022-CLU024, CLL026-CLU028, CLL032-CLU034, CLL036-CLU038
- 4) Cree XLamp CXA13xx, CXA15xx;
- 5) LG Innotek LEMWM18 10W, 13W;
- 6) Seoul Semiconductor ZC4, ZC6;
- 7) Tridonic TALEXXmodule SLE modules;
- 8) Philips Fortimo SLM Modules.
- 9) Edison EdiLex SLM and EdiLex II COB LED engines;
- 10) Lustrous LUSTRON 6 series LL604F, LL608D, LL613F, LL620F;
- 11) Prolight Opto PABS, PABA, PACB, PANA;
- 12) Luminus CLM-9; CXM-9; CHM-9 COB LED engines;
- 13) SHARP Mini Zenigata LED engines;
- 14) Vossloh-Schwabe LUGA Shop and LUGA C LED engines;
- 15) Samsung LC013 LED engines;
- 16) Osram SOsram SOLERIQ P6,SOLERIQ S13 and PrevaLED Core LED engines;



Order Information

Example:xLED-6050-B-#

Example:xLED-6050 - **1**

- 1** Anodising Color
- B-Black
- C-Clear
- Z-Custom

MingFa recommends the use of a high Thermal conductive interface between the LED Module and the LED cooler. Either thermal grease, A thermal pad or a phase change thermal pad Thickness 0.1-0.15mm is recommended.



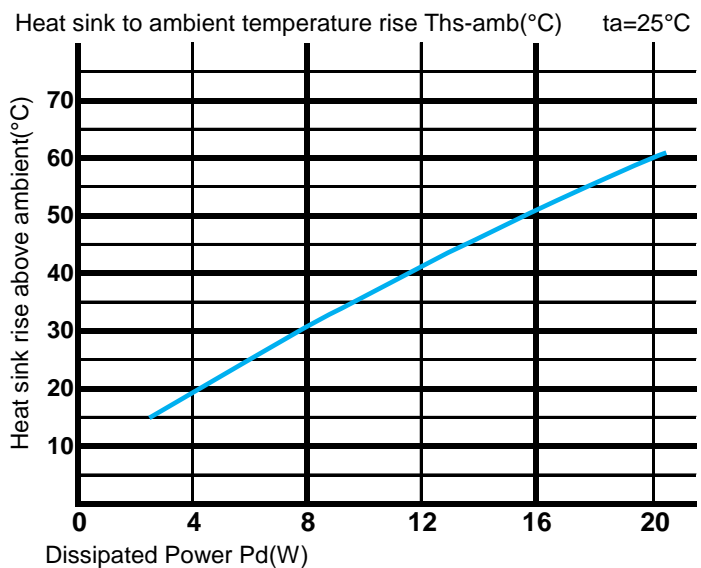
xLED

xLED-6050 Pin Fin LED Heat Sink Φ 60mm

The thermal data table

	 <i>xLED-6050</i>
Model No.	xLED-6050
Size	Φ60xH50mm
Material	AL1070
Finish	Black Anodized
Weight(g)	112
Thermal Wattage	15.5W
HeatsinkΘs-a²	68473
Thermal Resistance ($^{\circ}$C/W)²	3.3

Dissipated Power Pd(W)	Pd = Pe x (1- η L)	Heat sink to ambient thermal resistance Rhs-amb ($^{\circ}$ C/W)	Heat sink to ambient temperature rise Ths-amb ($^{\circ}$ C)
		xLED-6050	
4.0		4.8	19.0
8.0		3.9	31.0
12.0		3.5	42.0
16.0		3.2	51.0
20.0		2.9	58.0



Notes:

- Mentioned models are an extraction of full product range.
- For specific mechanical adaptations please contact MingfaTech.
- MingfaTech reserves the right to change products or specifications without prior notice.