



for

LED



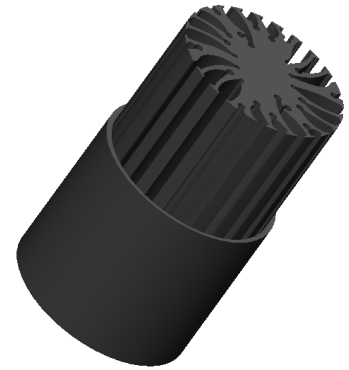
BuLED

BuLED-50E LED light accessory to replace MR16 fittings

Features VS Benefits

- * BuLED-50E LED light accessory includes one LED cooler and one LED housing to be assembled with LED modules to replace MR16.
- * Mechanical compatibility with direct mounting of the LED modules to the LED cooler and thermal performance matching the lumen packages.
- * For spotlight and downlight designs form 500 to 1800 lumen.
- * Thermal resistance range Rth 3.7°C/W.
- * Heatsink Diameter 48mm - Standard height 50mm , Other heights on request.
- * Housing Diameter 50mm - Standard height 50mm , Other heights on request.
- * Extruded from highly conductive aluminum.

Zhaga Book 3 Spot Light Modules Xicato ,Bridgelux ,Citizen ,Cree , Lumileds ,Osram , Seoul, LG innotek, Edison, Lustrous ,Prolight ,Lumins ,Samsung ,Sharp ,Nichia



- 1) Xicato: XSM, XIM,XTM; (XSA-390)
- 2) Bridgelux: ESS, ESR, Vero 10, Vero 13, V-series;
- 3) Citizen: CLL022, CLU024, CLL026, CLU028;
- 4) Cree: XLamp CXA13xx, CXA15xx;
- 5) Lumileds: Luxeon COB's 1203, 1204,Luxeon K arrays;
- 6) Osram: Soleriq S13;
- 7) Seoul: Semiconductor ZC6, ZC12;
- 8) LG Innotek: LEMWM18 10W, 13W;
- 9) Edison: EdiLex II COB LED engines;
- 10) Lustrous:Lustrous M Series,Lustrous 6 Series ;LL604F;
- 11) Prolight Opto: PABS, PABA, PACB, PANA;
- 12) Luminus: Cxx-6 and Cxx-9 series;
- 13) Samung: LC013 COB LED engines;
- 14) Sharp: Mini Zenigata LED engines;
- 15) Nichia: NTCWS024B, NTCWL036B, NJCWS024Z engines;



Order Information

Example:BuLED-50E-B-1,2

Example:BuLED-50E - **1** - **2**

1 Anodising Color

- B-Black
- C-Clear
- Z-Custom

2 Mounting Options - see graphics for details Combinations available

Ex.order code - 1,2
means option 1 and 2 combined

MingFa recommends the use of a high Thermal conductive interface between the LED Module and the LED cooler. Either thermal grease, A thermal pad or a phase change thermal pad Thickness 0.1-0.15mm is recommended.



for

LED

BuLED

BuLED-50E LED light accessory to replace MR16 fittings

The thermal data table

	 BuLED
Model No.	BuLED-50E
Heatsink Size	Φ48xH50mm
Housing Size	Φ50xH50mm
Material	AL6063-T5
Finish	Black Anodized
Weight(g)	160.0
Thermal Wattage	15.0W
HeatsinkOs-a²	36868
Thermal Resistance (°C/W)²	3.7

Dissipated Power Pd(W)	Pd = Pe x (1-ηL)	
	Heat sink to ambient thermal resistance Rhs-amb (°C/W)	Heat sink to ambient temperature rise Ths-amb (°C)
	BuLED-50E	BuLED-50E
2.5	5.6	14.0
4.5	5.3	24.0
7.0	4.6	32.0
9.5	4.3	41.0
12.0	4.1	49.0
15.0	3.7	55.0

