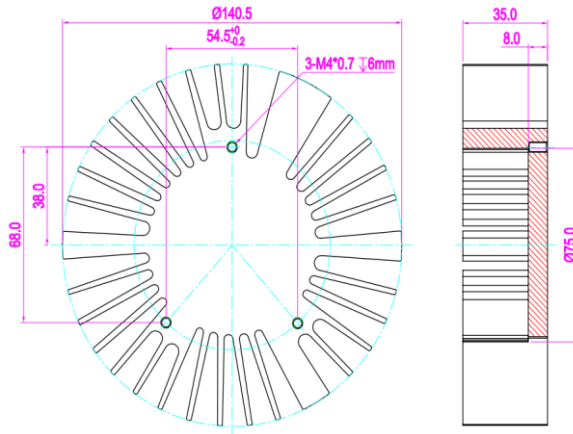


SimpoleD

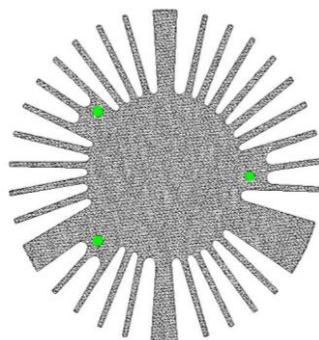
Simpole-OSR-140 for Osram Modular Passive LED Cooler Φ 140.5mm

Features VS Benefits

- * The Osram PL-CUBE LED Modular Passive LED Coolers are specifically designed for luminaires using the PL-CUBE LED engines.
- * Mechanical compatibility with direct mounting of the LED engines to the LED cooler and thermal performance matching the lumen packages.
- * For spotlight and downlight designs from 1100 to 3000 lumen.
- * Thermal resistance range R_{th} 1.1°C/W.
- * Modular design with mounting holes foreseen for direct mounting of Osram PL-CUBE LED LED Modular.
- * Diameter 140.5mm - standard height 35mm Other heights on request.
- * Extruded from highly conductive aluminum.



- * Below you find an overview of PL-CUBE LED modules which standard fit on the coolers.
- * In this way mechanical after work and related costs can be avoided, and lighting designers can standardize their designs on a limited number of LED coolers.



Osram PL-CUBE LED Modules standard Mounting Options

PL-CUBE LED:

- PL-CUBE-1100-830-0.35A-G1
- PL-CUBE-1100-840-0.35A-G1
- PL-CUBE-2000-830-0.35A-G1
- PL-CUBE-2000-840-0.35A-G1
- PL-CUBE-3000-830-0.7A-G1
- PL-CUBE-3000-840-0.7A-G1

Direct mounting with machine screws M4x10mm;
Green indicator marks.



for

LED



SimpoleD

Simpo-OSR-140 for Osram Modular Passive LED Cooler Φ 140.5mm

Mounting Options and Drawings & Dimensions

Example:Smipo-OSR-14035-B-

Example:SmipoLED-OSR-140 **1** - **2** - **3**

1 Height (mm)

2 Anodising Color

B-Black

C-Clear

Z-Custom

3 Mounting options;

On request;

Mounting holes, cable holes;

Screw thread, thermal interface



MOUNTING OPTION	THREAD	THREAD DEPTH	THREAD HOLE DISTANCE
N	None	None	None
1	M4	6mm	Osram PL-CUBE LED Modules standard hold
2			

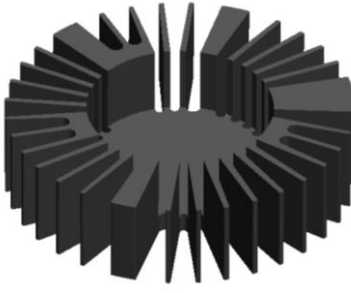
Notes:

- Mentioned models are an extraction of full product range.
- For specific mechanical adaptations please contact MingfaTech.
- MingfaTech reserves the right to change products or specifications without prior notice.

SimpoleD

SimpoleD-OSR-140 for Osram Modular Passive LED Cooler Φ140.5mm

The thermal data table

	 <i>SimpoleD-14035</i>
Model No.	SimpoleD-OSR-14035
Size	Φ140.5xH35mm
Material	6063-T5
Finish	Black Anodized
Weight(gr)	467
Thermal Wattage	36.2W
HeatsinkOs-a ²	94070
Heat Sink T _{Rise Above Ambient}	1.1

Heat sink to ambient temperature rise $T_{hs-amb}(^{\circ}C)$ $t_a=25^{\circ}C$

