



# Mingfa TECH for LED

**xLED**

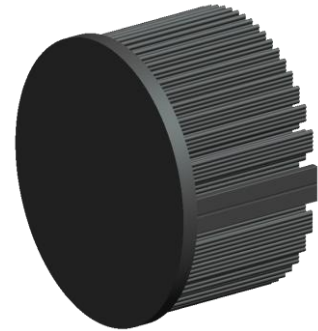
**xLED-8050 Pin Fin LED Heat Sink Φ80mm**

## Features VS Benefits

- \* Mechanical compatibility with direct mounting of the LED modules to the LED cooler and thermal performance matching the lumen packages.
- \* Thermal resistance range Rth 1.96°C/W.
- \* Modular design with mounting holes foreseen for direct mounting of a wide range of LED modules and COB's:
- \* Diameter 80mm - Standard height 50mm , Other heights on request.
- \* Forged from highly conductive aluminum.

2 standard colors - clear anodized - black anodized

Zhaga Book 3 Spot Light Modules Edison , Osram , Xicato , Bridelux , Citizen , Cree , Prolight , Philips , Tridonic , Vossloh , LG , Seoul , Lustrous , Luminus , SHARP , Samsung , GE lighting .



- 1) Xicato XSM, XIM,XTM;
- 2) Bridelux ES Star,Array V6,V8,V10 and Vero 10 Array LED engines;
- 3) Citizen CLL022-CLU024, CLL026-CLU028, CLL032-CLU034, CLL036-CLU038;
- 4) Cree XLamp CXA13xx, CXA15xx;
- 5) LG Innotek LEMWM18 10W, 13W;
- 6) Seoul Semiconductor ZC4, ZC6;
- 7) Tridonic TALEXXmodule SLE modules;
- 8) Edison EdiLex SLM and EdiLex II COB LED engines;
- 9) Lustrous LUSTRON 6 series LL604F, LL608D, LL613F, LL620F;
- 10) Prolight Opto PABS, PABA, PACB, PANA;
- 11) Luminus CLM-9;CXM-9;CHM-9 COB LED engines;
- 12) Osram S0sram SOLERIQ P6,SOLERIQ S13 and PrevaLED Core LED engines;
- 13) SHARP Mini Zenigata LED engines;
- 14) Vossloh-Schwabe LUGA Shop and LUGA C LED engines;
- 15) Samsung LC013 LED engines;
- 16) Philips Fortimo SLM Modules;
- 17) GE lighting Infusion™ LED engines;

## Order Information

Example:xLED-8050-B-#

Example:xLED-8050 - **1**

- 1** Anodising Color
- B-Black
- C-Clear
- Z-Custom


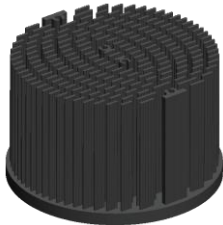


MingFa recommends the use of a high Thermal conductive interface between the LED Module and the LED cooler. Either thermal grease, A thermal pad or a phase change thermal pad Thickness 0.1-0.15mm is recommended.

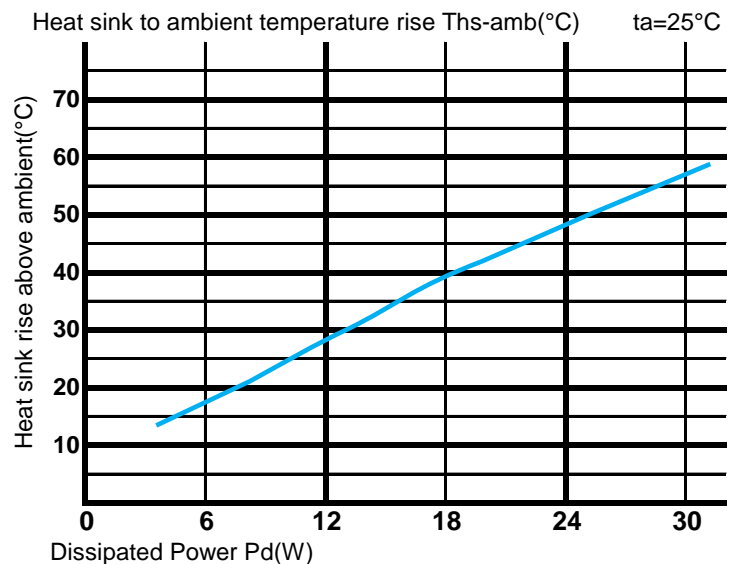
*xLED*

**xLED-8050 Pin Fin LED Heat Sink  $\Phi$ 80mm**

The thermal data table

	
	<i>xLED-8050</i>
<b>Model No.</b>	<b>xLED-8050</b>
<b>Size</b>	<b><math>\Phi</math>80xH50mm</b>
<b>Material</b>	<b>AL1070</b>
<b>Finish</b>	<b>Black Anodized</b>
<b>Weight(g)</b>	<b>197</b>
<b>Thermal Wattage</b>	<b>25.5W</b>
<b>HeatsinkOs-a<sup>2</sup></b>	<b>120774</b>
<b>Heat Sink RiseT<sub>Rise Above Ambient</sub> (°C/W)</b>	<b>1.96</b>

Dissipated Power Pd(W)	Pd = Pe x (1- $\eta$ L)	Heat sink to ambient thermal resistance Rhs-amb (°C/W)	Heat sink to ambient temperature rise Ths-amb (°C)
		xLED-8050	
6.0		2.8	17.0
12.0		2.3	28.0
18.0		2.2	40.0
24.0		2.0	48.0
30.0		1.9	57.0



Notes:

- Mentioned models are an extraction of full product range.
- For specific mechanical adaptations please contact MingfaTech.
- MingfaTech reserves the right to change products or specifications without prior notice.