



for

LED

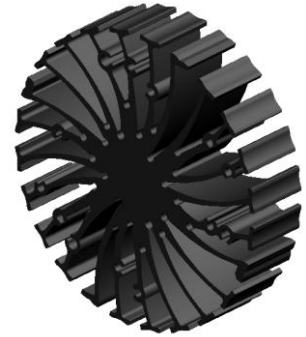


EtraLED

EtraLED-PRO-8520 Prolight Modular Passive Star LED Heat Sink Φ 85mm

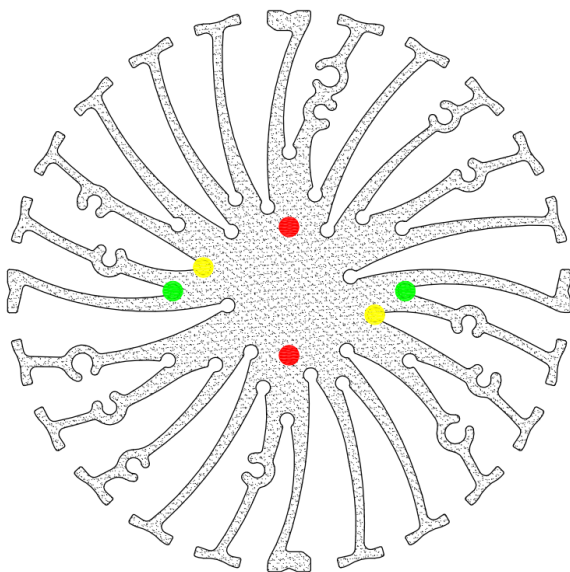
Features VS Benefits

- * The EtraLED-PRO-8520 Prolight Modular Passive Star LED Heat Sinks are specifically designed for luminaires using the Prolight LED engines.
- * Mechanical compatibility with direct mounting of the LED engines to the LED cooler and thermal performance matching the lumen packages.
- * For spotlight and downlight designs from 700 to 3200 lumen.
- * Thermal resistance range R_{th} 2.0°C/W.
- * Modular design with mounting holes foreseen for direct mounting of Prolight COB series LED engines.
- * Diameter 85mm - standard height 20mm Other heights on request.
- * Extruded from highly conductive aluminum.



Zhaga LED engine and radiator assembly is a unified future international standardization

- * Below you find an overview of Prolight COB's and LED modules which standard fit on the EtraLED Star LED Heat Sinks.
- * In this way mechanical after work and related costs can be avoided, and lighting designers can standardize their designs on a limited number of Star LED Heat Sinks.



Prolight LED engines Mounting Options

COB CII Series Modules names:

PACC-18xxx-xxxx ;

- With Zhaga Book 3 for green indicator marks:
BJB Holder:47.319.2021.50;
Mounting with machine screws M3x6mm;
- Without LED holders for yellow indicator marks.
Direct mounting with machine screws M3x6mm;

COB BI Series Modules names:

PABA-15xxx-xxxx ;
PABA- 22xxx-xxxx ;

- With Zhaga Book 3 for green indicator marks:
BJB Holder:47.319.2040.50;
Mounting with machine screws M3x6mm;
- Without LED holders for yellow indicator marks.
Direct mounting with machine screws M3x6mm;

COB N Series Modules names:

PANA-17xxx-xxxx ;
PANA-24xxx-xxxx ;

- For the red indicator marks.
Direct mounting with machine screws M3x6mm;



EtraLED

EtraLED-PRO-8520 Prolight Modular Passive Star LED Heat Sink Ø85mm

Mounting Options and Drawings & Dimensions

Example: EtraLED-PRO-8520-B-3

Example: EtraLED-PRO-85 **1** - **2** - **3**

1 Height (mm)

2 Anodising Color

- B-Black
- C-Clear
- Z-Custom

3 Mounting Options - see graphics for details Combinations available

Ex.order code - 12 means option 1 and 2 combined

Notes:

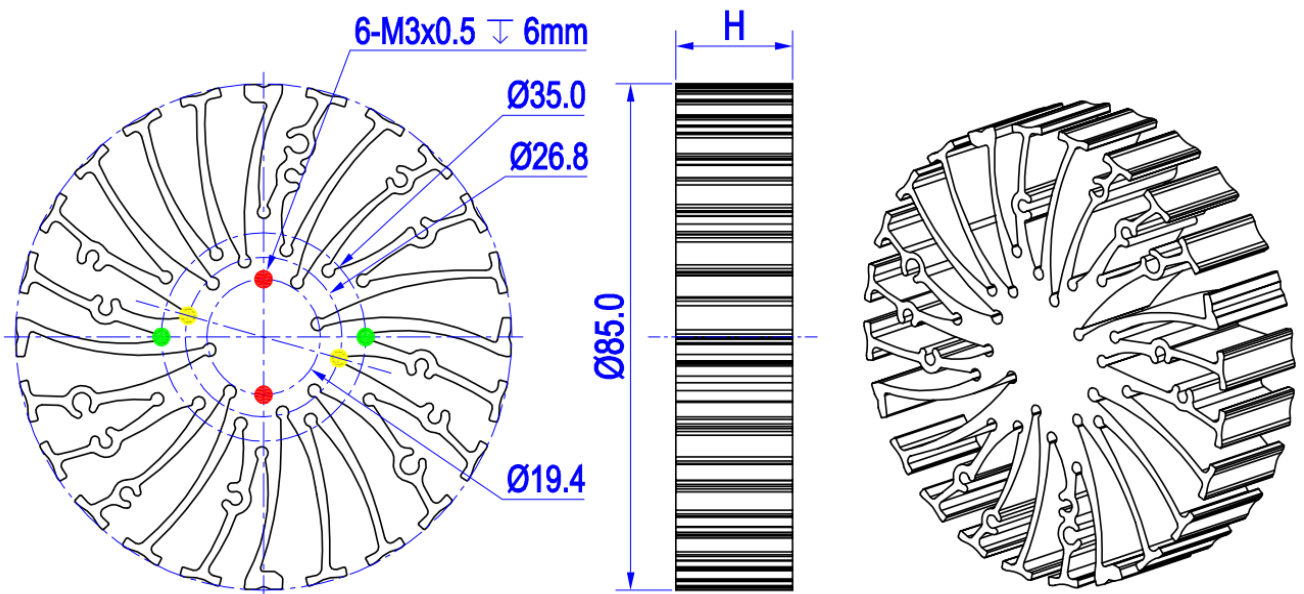
- Mentioned models are an extraction of full product range.
- For specific mechanical adaptations please contact MingfaTech.
- MingfaTech reserves the right to change products or specifications without prior notice.



ProLight Opto Technology Corporation



MOUNTING OPTION	Module type	Holder NO.	THREAD	THREAD DEPTH	THREAD HOLE DISTANCE
1	COB N Series	/	M3	6mm	19.4mm/ 2-@180°
2	COB BI Series COB CII Series	/	M3	6mm	26.8mm/ 2-@180°
3	COB CII Series	BJB 47.319.2021.50	M3	6mm	35.0mm/ 2-@180° Zhaga Book3
	COB BI Series	BJB 47.319.2040.50			



The thermal data table

	
	<i>EtraLED-8520</i>
Model No.	EtraLED-PRO-8520
Size	Φ 85xH20mm
Material	AL6063-T5
Finish	Black Anodized
Weight(gr)	115.00
Thermal Wattage	25.0W
HeatsinkΘs-a²	40076
Heat Sink T_{Rise Above Ambient}	2.0

Dissipated Power Pd(W)	Pd = Pe x (1- η L)	Heat sink to ambient thermal resistance Rhs-amb (°C/W)	Heat sink to ambient temperature rise Ths-amb (°C)
		EtraLED-PRO-8520	EtraLED-PRO-8520
6		2.7	16
12		1.8	22
18		2.1	37
24		2.0	48
30		1.9	57

