



for

LED

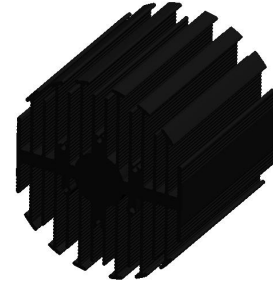


eLED

### eLED-9580 Modular Passive LED Star Heat Sink $\Phi$ 95mm

#### Features VS Benefits

- \* Mechanical compatibility with direct mounting of the LED modules to the LED cooler and thermal performance matching the lumen packages.
  - \* Thermal resistance range Rth 1.1°C/W.
  - \* Modular design with mounting holes foreseen for direct mounting of a wide range of LED modules and COB's:
  - \* Diameter 95mm - Standard height 80mm , Other heights on request.
  - \* Extruded from highly conductive aluminum.
  - 2 standard colors - clear anodised - black anodised
- Zhaga Book 3 Modules: Edison , Osram , Xicato , Xicato ,Bridgelux , Citizen , Cree , Lumileds ,Tridonic Vossloh-Schwabe , LG Innotek, Seoul , Luminus ,Prolight ,SHARP ,Samsung , Lustrous .Philips



- 1) Xicato XSM, XIM,XTM;(XSA-309;XSA-310)
- 2) Bridgelux ESS, ESR, Vero 10, Vero 13,Vero 18,Vero 29 V-series;
- 3) Citizen CLL022-CLU024, CLL032-CLU034,CLL040-CLU044;
- 4) Cree XLamp CXA13xx, CXA15xx,CXA18,CXA25;
- 5) Lumileds Luxeon COB's 1203, 1204, 1205, Luxeon K arrays K12, K16;
- 6) LG Innotek LEMWM18 27W, 24W, 40W;
- 7) Seoul Semiconductor ZC25, ZC40,ZC60, ZC100 Series;
- 8) Tridonic TALEXXmodule SLE Modules engines;
- 9) Luminus C##14 ,C##22COB LED engines.
- 10) Edison EdiLex SLM and EdiLex II COB LED engines;
- 11) Prolight Opto PABS, PABA, PACB, PANA;
- 12) SHARP Tiger Zenigataand and Mega Zenigata LED engines;
- 13) Samung COB LC026B,LC033B,LC040BCOB LED engines;
- 14) Vossloh-Schwabe Vossloh-Schwabe LUGA Shop LED engines;
- 15) OSRAM PrevaLED Core,SOLERIQ P,SOLERIQ E and SOLERIQ S LED engines;
- 16) Lustrous M series, LUSTRON series, Coral series,LUSTRON 5 6 series LED engines;
- 17) Philips Fortimo SLM LED engines.



#### Order Information

Example:eLED-9580-B-#

Example:eLED-95 **1** - **2** - **3**

- 1** Hight (mm)
- 2** Anodising Color  
B-Black  
C-Clear  
Z-Custom
- 3** Mounting Options - see graphics for details Combinations available  
Ex.order code - 12  
means option 1 and 2 combined

MingFa recommends the use of a high thermal conductive interface between the LED module and the LED cooler. Either thermal grease, a thermal pad or a phase change thermal pad thickness 0.1-0.15mm is recommended.

Tel:+86-769-39023131  
 E-fax: +86-(020)28819702 ext22122  
 Http://www.heatsinkled.com  
 Http://www.mingfatech.com



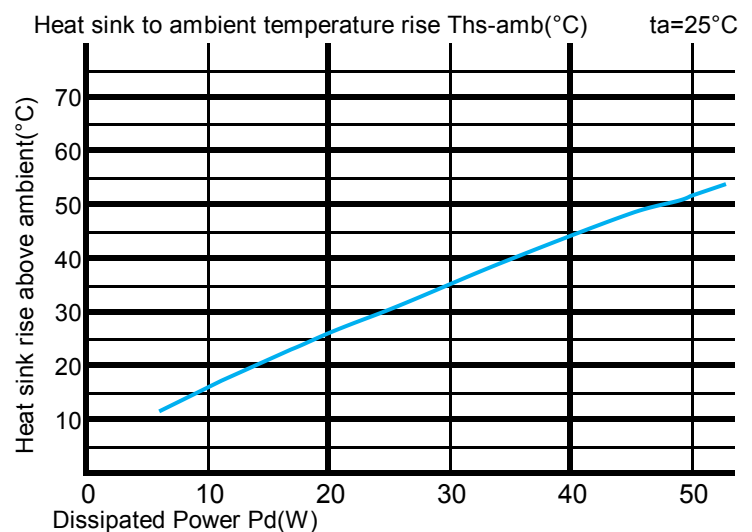
eLED

**eLED-9580 Modular Passive LED Star Heat Sink  $\Phi$ 95mm**

**The thermal data table**

	 <i>eLED-9580</i>
<b>Model No.</b>	<b>eLED-9580</b>
<b>Size</b>	<b><math>\Phi</math>95x80mm</b>
<b>Material</b>	<b>AL6063-T5</b>
<b>Finish</b>	<b>Black Anodized</b>
<b>Weight(gr)</b>	<b>564</b>
<b>Thermal Wattage</b>	<b>49.2W</b>
<b>Heatsink<math>\Theta</math>s-a<sup>2</sup></b>	<b>170178</b>
<b>Heat Sink RiseT<sub>Rise Above Ambient</sub> (°C/W)</b>	<b>1.1</b>

Dissipated Power Pd(W)	Heat sink to ambient thermal resistance Rhs-amb (°C/W)	
	eLED-9580	
10	1.6	16
20	1.3	26
30	1.2	35
40	1.1	44
50	1.0	52



**Notes:**

- Mentioned models are an extraction of full product range.
- For specific mechanical adaptations please contact MingfaTech.
- MingfaTech reserves the right to change products or specifications without prior notice.