

SimpoLED

SimpoLED-OSR-8180 for OSRAM Modular Passive LED Cooler Φ 81mm

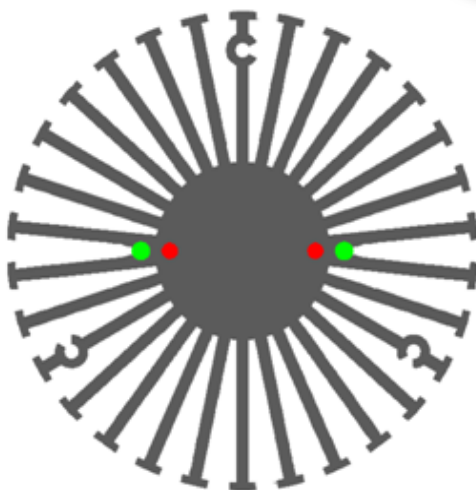
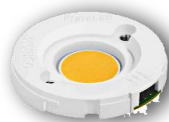
Features VS Benefits

- * The SimpoLED-OSR-8180 OSRAM Modular Passive LED Coolers are specifically designed for luminaires using the OSRAM LED engines.
- * Mechanical compatibility with direct mounting of the LED engines to the LED cooler and thermal performance matching the lumen packages.
- * For spotlight and downlight designs from 1400 to 3600 lumen.
- * Thermal resistance range R_{th} 1.6°C/W.
- * Modular design with mounting holes foreseen for direct mounting of OSRAM PrevaLED Core , SOLERIQ P and SOLERIQ S LED engines.
- * Diameter 81mm - standard height 80mm Other heights on request.
- * Extruded from highly conductive aluminum.



Zhaga LED engine and radiator assembly is a unified future international standardization

- * Below you find an overview of OSRAM engines COB's and LED modules which standard fit on the SimpoLED coolers.
- * In this way mechanical after work and related costs can be avoided, and lighting designers can standardize their designs on a limited number of LED coolers.



OSRAM LED engines Mounting Options

Osram PrevaLED Core AC LED modules.

PL-CORE AC -2000-827;	LEP -2000-827-C-AC;
PL-CORE AC -2000-830;	LEP -2000-830-C-AC;
PL-CORE AC -2000-840;	LEP -2000-840-C-AC;
PL-CORE AC PRO -2000-830;	
PL-CORE AC PRO -2000-840;	

Osram PrevaLED Core Z3 LED modules.

PL-CORE -2000-830-Z3;	PL-CORE -3000-830-Z3;
PL-CORE -2000-840-Z3;	PL-CORE -3000-840-Z3;
PL-CORE -2000-930-Z3;	

Osram PrevaLED Core Z4 LED modules.

PL-CORE-Z4 -2000-827;	PL-CORE-Z4 -3000-827;
PL-CORE-Z4 -2000-830;	PL-CORE-Z4 -3000-830;
PL-CORE-Z4 -2000-835;	PL-CORE-Z4 -3000-835;
PL-CORE-Z4 -2000-840;	PL-CORE-Z4 -3000-840;
PL-CORE-Z4 -2000-930;	

Osram SOLERIQ S19 LED modules.

(AAG.STUCCHI holder:8503-G2); (BJB holder:47.319.2170.50);

GW KAHJB1.EM-SSSU-27S3;	GW KAHJB1.EM-SQSS-27S3;
GW KAHJB1.EM-SSSU-30S3;	GW KAHJB1.EM-SQSS-30S3;
GW KAHJB1.EM-STTP-35S3;	GW KAHJB1.EM-SRST-35S3;
GW KAHJB1.EM-STTP-40S3;	GW KAHJB1.EM-SRST-40S3;

Zhaga Book3 Green indicator marks:

Direct mounting with machine screws M3x6mm;

Osram SOLERIQ P9 modules.

(AAG.STUCCHI holder:8501-G2); (BJB holder:47.319.6200.50);

GW MAFJB1.EM-RTSQ-27S3;	GW MAFJB1.CM-RSSP-27S3;
GW MAFJB1.EM-RUSR-30S3;	GW MAFJB1.CM-RTSQ-30S3;
GW MAFJB1.EM-RUSS-35S3;	GW MAFJB1.CM-RTSR-35S3;
GW MAFJB1.EM-SPST-40S3;	GW MAFJB1.CM-RUSS-40S3;
GW MAFJB1.EM-SPST-50S3;	

Zhaga Book11 Red indicator marks:

Direct mounting with machine screws M3x6mm;



for

LED



SimpoleLED

SimpoleLED-OSR-8180 for OSRAM Modular Passive LED Cooler Ø81mm

Mounting Options and Drawings & Dimensions

Example: SimpoleLED-OSR-8180-B-3

Example: SimpoleLED-OSR-81 **1** - **2** - **3**

- 1** Height (mm)
- 2** Anodising Color
B-Black
C-Clear
Z-Custom
- 3** Mounting Options - see graphics for details Combinations available
Ex.order code - 12
means option 1 and 2 combined

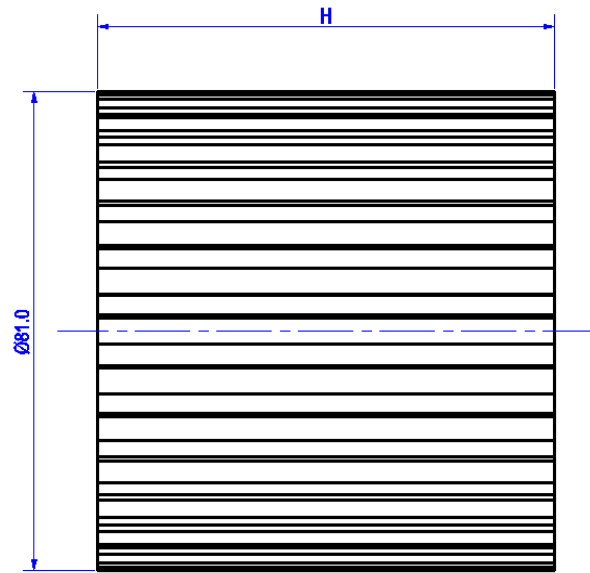
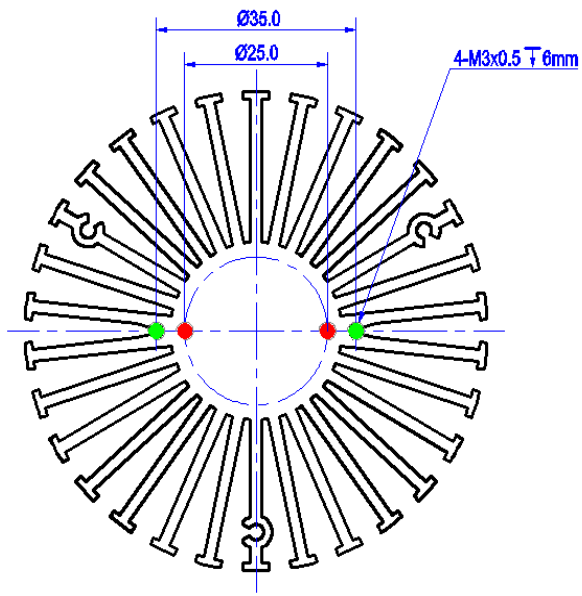


A. A. G. STUCCHI
Ideas are made of light

Notes:

- Mentioned models are an extraction of full product range.
- For specific mechanical adaptations please contact MingfaTech.
- MingfaTech reserves the right to change products or specifications without prior notice.

MOUNTING OPTION	Module type	Holder NO.	THREAD	THREAD DEPTH	THREAD HOLE DISTANCE
1	SOLERIQ P9	AAG.STUCCHI: 8501-G2	M3	6mm	25.0mm/ 2-@180°
		BJB: 47.319.6200.50			
2	PrevaLED Core AC PrevaLED Core Z3 PrevaLED Core Z4	/	M3	6mm	35.0mm/ 2-@180°
		SOLERIQ S19	AAG.STUCCHI: 8503-G2		
	BJB: 47.319.2170.50				



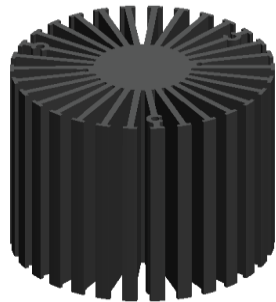
Tel:+86-769-39023131
E-fax:+86-(020)28819702 ext:22122
Email:sales@mingfatech.com
Http://www.heatsinkled.com
Http://www.mingfatech.com



SimpoleD

SimpoleD-OSR-8180 for OSRAM Modular Passive LED Cooler Φ 81mm

The thermal data table

	 <i>SimpoleD-8180</i>
Model No.	SimpoleD-OSR-8180
Size	Φ 81xH80mm
Material	AL6063-T5
Finish	Black Anodized
Weight(g)	508.0
Thermal Wattage	31.2W
HeatsinkOs-a²	148408
Heat Sink T_{Rise Above Ambient}	1.6

Dissipated Power Pd(W)	Pd = Pe x (1- η L)		Heat sink to ambient thermal resistance Rhs-amb ($^{\circ}$ C/W)	Heat sink to ambient temperature rise Ths-amb ($^{\circ}$ C)
			SimpoleD-OSR-8180	SimpoleD-OSR-8180
7.0			2.14	15.0
14.0			1.82	25.5
21.0			1.66	35.0
28.0			1.53	43.0
30.0			1.72	50.7

