



for

LED

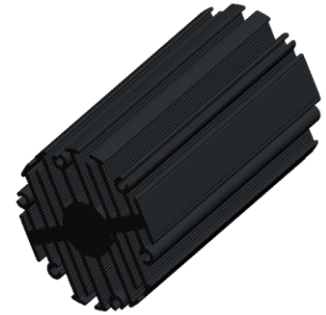


eLED

### eLED-4680 Modular Passive LED Star Heat Sink $\Phi$ 46mm

#### Features VS Benefits

- \* Mechanical compatibility with direct mounting of the LED modules to the LED cooler and thermal performance matching the lumen packages.
  - \* Thermal resistance range Rth 3.8°C/W.
  - \* Modular design with mounting holes foreseen for direct mounting of a wide range of LED modules and COB's:
  - \* Diameter 46.5mm - Standard height 80mm , Other heights on request.
  - \* Extruded from highly conductive aluminum.
- Zhaga Book 3 Spot Light Modules Edison , Osram , Xicato ,Bridgelux ,Citizen ,Cree , Lumileds , Tridonic , Vossloh , Seoul ,LG , Lustrous ,Prolight ,Vossloh ,Samung ,Sharp ,Philips



- 1) Xicato XSM, XIM,XTM;
- 2) Bridgelux ESS, ESR, Vero 10, Vero 13, V-series;
- 3) Citizen CLL022-CLU024, CLL032-CLU034;
- 4) Cree XLamp CXA13xx, CXA15xx;
- 5) Lumileds Luxeon COB's 1203, 1204, 1205,Luxeon K arrays K12, K16;
- 6) Osram Soleriq S13, S19, E30
- 7) Seoul Semiconductor ZC6, ZC12;
- 8) Tridonic TALEXXmodule SLE modules.
- 9) LG Innotek LEMWM18 10W, 13W;
- 10) Edison EdiLex SLM and EdiLex II COB LED engines.
- 11) Lustrous Lustrous Series,Lustrous M Series,Lustrous V5 Series
- 12) Prolight Opto PABS, PABA, PACB, PANA
- 13) Luminus CLM-9,CXM-9,CHM-9 COB engines.
- 14) Vossloh-Schwabe LUGA Shop and LUGA C LED engines.
- 15) Samung LC013 COB LED engines.
- 16) SHARP Mini Zenigata LED engines.
- 17) Philips Fortimo SLM LED engines.

#### Order Information

Example:eLED-4680-B-#

Example:eLED-46 **1** - **2**

- 1** Hight (mm)
- 2** Anodising Color
  - B-Black
  - C-Clear
  - Z-Custom


MingFa recommends the use of a high Thermal conductive interface between the LED Module and the LED cooler. Either thermal grease, A thermal pad or a phase change thermal pad Thickness 0.1-0.15mm is recommended.



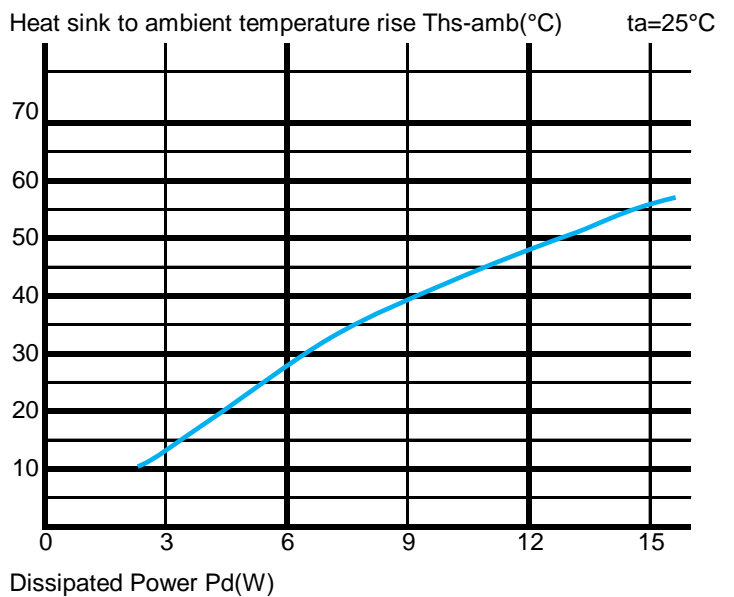
*eLED*

**eLED-4680 Modular Passive LED Star Heat Sink  $\Phi$ 46mm**

**The thermal data table**

	 <i>eLED-4680</i>
<b>Model No.</b>	<b>eLED-4680</b>
<b>Size</b>	<b><math>\Phi</math>46.5xH80mm</b>
<b>Material</b>	<b>AL6063-T5</b>
<b>Finish</b>	<b>Black Anodized</b>
<b>Weight(g)</b>	<b>161.5</b>
<b>Thermal Wattage</b>	<b>13.0W</b>
<b>HeatsinkGs-a<sup>2</sup></b>	<b>69980</b>
<b>Heat Sink T<sub>Rise Above Ambient</sub> (°C/W)</b>	<b>3.8</b>

Dissipated Power Pd(W)	Pd = Pe x (1-ηL)	Heat sink to ambient thermal resistance Rhs-amb (°C/W)	Heat sink toambienttemperature riseThs-amb (°C)
		eLED-4680	
3		4.67	14
6		4.67	28
9		4.33	39
12		4.00	48
15		3.73	56



**Notes:**

- Mentioned models are an extraction of full product range.
- For specific mechanical adaptations please contact MingfaTech.
- MingfaTech reserves the right to change products or specifications without prior notice.