

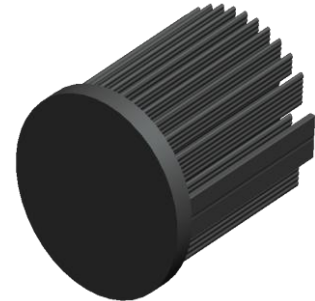


**xLED**

**xLED-4550 Pin Fin LED Heat Sink  $\Phi$ 45mm**

### Features VS Benefits

- \* Mechanical compatibility with direct mounting of the LED modules to the LED cooler and thermal performance matching the lumen packages.
  - \* Thermal resistance range Rth 5.0°C/W.
  - \* Modular design with mounting holes foreseen for direct mounting of a wide range of LED modules and COB's:
  - \* Diameter 45mm - Standard height 50mm , Other heights on request.
  - \* Forged from highly conductive aluminum.
- 2 standard colors - clear anodized - black anodized
- Zhaga Book 3 Spot Light Modules Edison , Osram , Xicato, Bridelux , Citizen , Cree , Seoul , Philips , Tridonic , Vossloh-Schwabe , LG , Lustrous , Prolight , Luminus , SHARP ,Samsung .....



- 1) Xicato XSM, XIM,XTM;
- 2) Bridelux ES Star,Array V6,V8,V10 and Vero 10 Array LED engines;
- 3) Citizen CLL022-CLU024, CLL026-CLU028, CLL032-CLU034, CLL036-CLU038;
- 4) Cree XLamp CXA13xx, CXA15xx;
- 5) LG Innotek LEMWM18 10W, 13W;
- 6) Seoul Semiconductor ZC4, ZC6;
- 7) Tridonic TALEXXmodule SLE modules;
- 8) Osram SOsram SOLERIQ P6,SOLERIQ S13 and PrevaLED Core LED engines;
- 9) Edison EdiLex SLM and EdiLex II COB LED engines;
- 10) Lustrous LUSTRON 6 series LL604F, LL608D, LL613F, LL620F;
- 11) Prolight Opto PABS, PABA, PACB, PANA;
- 12) Luminus CLM-9;CXM-9;CHM-9 COB LED engines;
- 13) SHARP Mini Zenigata LED engines;
- 14) Vossloh-Schwabe LUGA Shop and LUGA C LED engines;
- 15) Samsung LC013 LED engines;
- 16) Philips Fortimo SLM Modules.



### Order Information

Example:xLED-4550-B-#

Example:xLED-4550 -

- Anodising Color
- B-Black
- C-Clear
- Z-Custom

MingFa recommends the use of a high Thermal conductive interface between the LED Module and the LED cooler. Either thermal grease, A thermal pad or a phase change thermal pad Thickness 0.1-0.15mm is recommended.

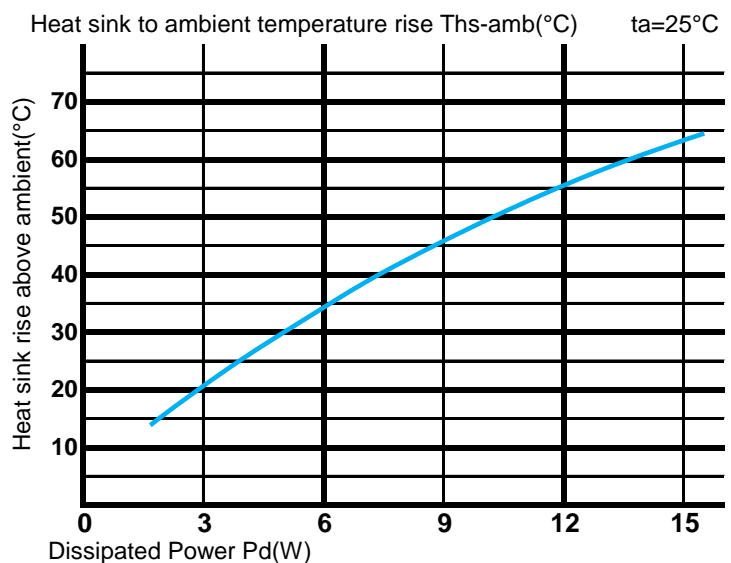
*xLED*

**xLED-4550 Pin Fin LED Heat Sink  $\Phi$ 45mm**

The thermal data table

	<i>xLED-4550</i>
<b>Model No.</b>	<b>xLED-4550</b>
<b>Size</b>	<b><math>\Phi</math>45xH50mm</b>
<b>Material</b>	<b>AL1070</b>
<b>Finish</b>	<b>Black Anodized</b>
<b>Weight(g)</b>	<b>63.5</b>
<b>Thermal Wattage</b>	<b>10.0W</b>
<b>Heatsink<math>\Theta</math>s-a<sup>2</sup></b>	<b>37985</b>
<b>Heat Sink Rise T<sub>Rise Above Ambient</sub> (°C/W)</b>	<b>5</b>

Dissipated Power Pd(W)	Pd = Pe x (1- $\eta$ L)	Heat sink to ambient thermal resistance Rhs-amb (°C/W)	Heat sink to ambient temperature rise Ths-amb (°C)
		xLED-4550	
3.0		7.0	21.0
6.0		5.7	34.0
9.0		5.1	46.0
12.0		4.7	56.0
15.0		4.2	63.0



Notes:

- Mentioned models are an extraction of full product range.
- For specific mechanical adaptations please contact MingfaTech.
- MingfaTech reserves the right to change products or specifications without prior notice.