



for

LED

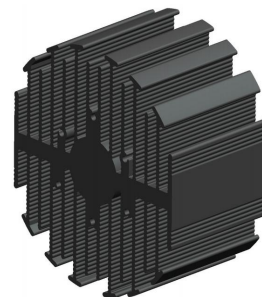


eLED

eLED-SAM-9550 Samsung Modular Passive Star LED Heat Sink Φ 95mm

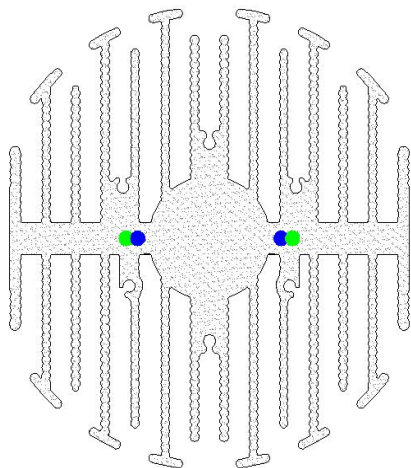
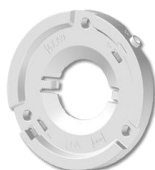
Features VS Benefits

- * The eLED-SAM-9550 Samsung Modular Passive LED Star Heat Sinks are specifically designed for luminaires using the Samsung LED engines.
- * Mechanical compatibility with direct mounting of the LED engines to the LED cooler and thermal performance matching the lumen packages.
- * For spotlight and downlight designs from 1800 to 4500 lumen.
- * Thermal resistance range R_{th} 1.35°C/W.
- * Modular design with mounting holes foreseen for direct mounting of Samsung COB LED engines.
- * Diameter 95mm - standard height 50mm Other heights on request.
- * Extruded from highly conductive aluminum.



Zhaga LED engine and radiator assembly is a unified future international standardization

- * Below you find an overview of Samsung COB's and LED modules which standard fit on the Star LED Heat Sinks.
- * In this way mechanical after work and related costs can be avoided, and lighting designers can standardize their designs on a limited number of Star LED Heat Sinks.



Samsung LED Modules Mounting indicator marks overview

For the LC026 B LED engines.

- SPHWW1HDNC27YHW32F;
- SPHWW1HDNC27YHV32F;
- SPHWW1HDNC27YHU32F;
- SPHWW1HDNC27YHT32F;
- SPHWW1HDNC25YHW32F;
- SPHWW1HDNC25YHV32F;
- SPHWW1HDNC25YHU32F;
- SPHWW1HDNC25YHT32F;
- SPHCW1HDNC25YHRT3F;

For the LC033 B LED engines.

- SPHWW1HDND25YHW33P;
- SPHWW1HDND25YHV33P;
- SPHWW1HDND25YHU33P;
- SPHWW1HDND25YHT33P;
- SPHCW1HDND25YHRT3P;

For the LC040 B LED engines.

- SPHWW1HDNE25YHW34J;
- SPHWW1HDNE25YHV34J;
- SPHWW1HDNE25YHU34J;
- SPHWW1HDNE25YHT34J;
- SPHCW1HDNE25YHRT4J;

NO 1: With Zhaga Book3 Holders:

TE Connectivity: Z50 2213258-2;

Green indicator marks

Mounting with machine screws M3x8mm;

NO 2: Without holder:

Direct mounting with machine screws M3x8mm;

Blue indicator marks.

Tel: +86-769-39023131

E-fax: +86-(020)28819702 ext:22122

Email: sales@mingfatech.com

Http://www.heatsinkled.com

Http://www.mingfatech.com





eLED

eLED-SAM-9550 Samsung Modular Passive Star LED Heat Sink $\Phi 95\text{mm}$

Mounting Options and Drawings & Dimensions

Example: eLED-SAM-9550-B-3

Example: eLED-SAM-95



1 Height (mm)

2 Anodising Color

B-Black

C-Clear

Z-Custom

3 Mounting options;

On request;

Mounting holes, cable holes;

Screw thread, thermal interface pad.

Notes:

- Mentioned models are an extraction of full product range.

- For specific mechanical adaptations please contact MingfaTech.

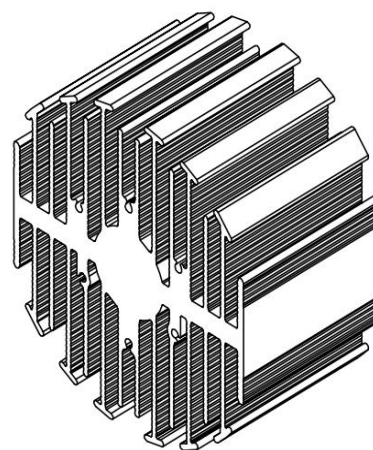
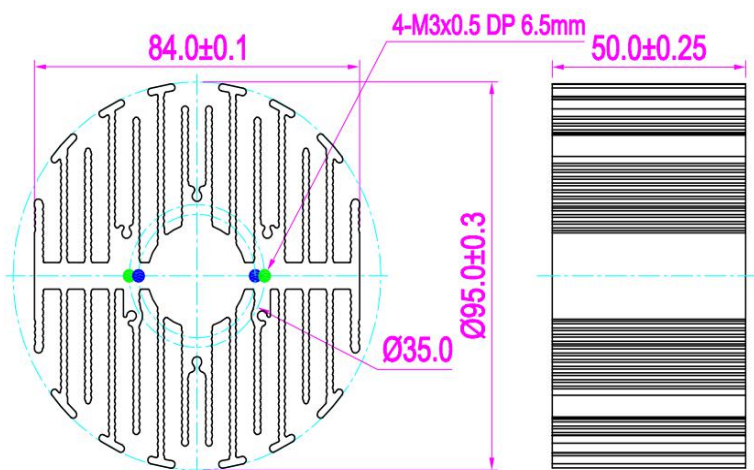
-

MingfaTech reserves the right to change products or specifications with out prior notice.

Note : option 1 and option 2 can not be combined



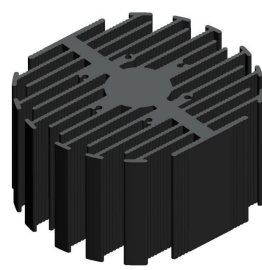
MOUNTING OPTION	Module type	Holder NO.	THREAD	THREAD DEPTH	THREAD HOLE DISTANCE
1	LC026B LC033B	/	M3	6.5mm	30.2mm/ @2-180°
2	LC040B	Type 2-2154857-3	M3	6.5mm	35.0mm/ @2-180°



Tel: +86-769-39023131
 E-fax: +86-(020)28819702 ext:22122
 Email:sales@mingfatech.com
 Http://www.heatsinkled.com
 Http://www.mingfatech.com



The thermal data table

	 <i>eLED-9550</i>
Model No.	eLED-SAM-9550
Size	Φ95xH50mm
Material	AL6063-T5
Finish	Black Anodized
Weight(gr)	353.0
Thermal Wattage	40.5W
HeatsinkOs-a²	108320
Heat Sink T Rise Above Ambient	1.25

Dissipated Power Pd(W)	Heat sink to ambient thermal resistance Rhs-amb (°C/W)		Heat sink to ambient temperature rise T _{hs-amb} (°C)	
	eLED-SAM-9550			
10	1.80		18	
20	1.40		28	
30	0.97		29	
40	1.25		50	
50	1.18		59	

