



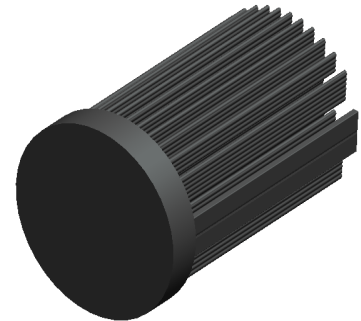
# Mingfa TECH for LED

**xLED**

**xLED-4568 Pin Fin LED Heat Sink  $\Phi$ 45mm**

## Features VS Benefits

- \* Mechanical compatibility with direct mounting of the LED modules to the LED cooler and thermal performance matching the lumen packages.
  - \* Thermal resistance range Rth 4.2° C/W.
  - \* Modular design with mounting holes foreseen for direct mounting of a wide range of LED modules and COB's:
  - \* Diameter 45mm - Standard height 68mm , Other heights on request.
  - \* Forged from highly conductive aluminum.
- 2 standard colors - clear anodized - black anodized  
Zhaga Book 3 Spot Light Modules Xicato ; Cree ,  
Bridelux , Citizen , LUMILEDS , Luminus ,Sharp ,LG ,Philips ,Samsung



- 1) Xicato XSM, XIM,XTM;
- 2) Bridelux ES Star,Array V6,V8,V10 and Vero 10 Array LED engines;
- 3) Citizen CLL022-CLU024, CLL026-CLU028, CLL032-CLU034, CLL036-CLU038;
- 4) Cree XLamp CXA13xx, CXA15xx;
- 5) LG Innotek LEMWM18 10W, 13W;
- 6) Seoul Semiconductor ZC4, ZC6;
- 7) Tridonic TALEXXmodule SLE modules;
- 8) Philips Fortimo SLM Modules.
- 9) Edison EdiLex SLM and EdiLex II COB LED engines;
- 10) Lustrous LUSTRON 6 series LL604F, LL608D, LL613F, LL620F;
- 11) Prolight Opto PABS, PABA, PACB, PANA;
- 12) Luminus CLM-9;CXM-9;CHM-9 COB LED engines;
- 13) SHARP Mini Zenigata LED engines;
- 14) Vossloh-Schwabe LUGA Shop and LUGA C LED engines;
- 15) Samsung LC013 LED engines;
- 16) Osram SOsram SOLERIQ P6,SOLERIQ S13 and PrevaLED Core LED engines;



## Order Information

Example:xLED-4568-B-#

Example:xLED-4568 - **1**

- 1** Anodising Color
- B-Black
- C-Clear
- Z-Custom

MingFa recommends the use of a high Thermal conductive interface between the LED Module and the LED cooler. Either thermal grease, A thermal pad or a phase change thermal pad Thickness 0.1-0.15mm is recommended.

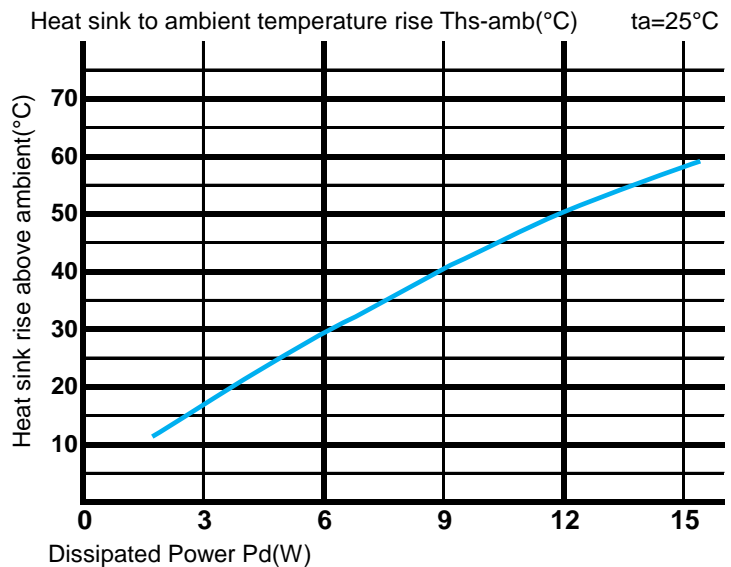
*xLED*

**xLED-4568 Pin Fin LED Heat Sink  $\Phi$ 45mm**

**The thermal data table**

|   |                                  |
|---|----------------------------------|
|   | <br><i>xLED-4568</i>             |
| <b>Model No.</b>  | <b>xLED-4568</b>                 |
| <b>Size</b>   | <b><math>\Phi</math>45xH68mm</b> |
| <b>Material</b>   | <b>AL1070</b>                    |
| <b>Finish</b>   | <b>Black Anodized</b>            |
| <b>Weight(g)</b>  | <b>90</b>                        |
| <b>Thermal Wattage</b>                                      | <b>12.0W</b>                     |
| <b>Heatsink<math>\Theta</math>s-a<sup>2</sup></b>           | <b>49775</b>                     |
| <b>Heat Sink Rise T<sub>Rise Above Ambient</sub> (°C/W)</b> | <b>4.2</b>                       |

| Dissipated Power Pd(W) | Pd = Pe x (1-ηL) | Heat sink to ambient thermal resistance Rhs-amb (°C/W) | Heat sink to ambient temperature rise Ths-amb (°C) |
|------------------------|------------------|--|--|
|                        |                  | xLED-4568  |  |
| 3.0                    |                  | 5.7  | 17.0   |
| 6.0                    |                  | 4.8  | 29.0   |
| 9.0                    |                  | 4.6  | 41.0   |
| 12.0                   |                  | 4.2  | 50.0   |
| 15.0                   |                  | 3.9  | 58.0   |



**Notes:**

- Mentioned models are an extraction of full product range.
- For specific mechanical adaptations please contact MingfaTech.
- MingfaTech reserves the right to change products or specifications without prior notice.