



Shiyan Haisigao Industry&Trade Co.,Ltd

HSG-China

ADD: No.3-2 Pulin South Road, Pulin Industry Area, Shiyan, Hubei Province,China

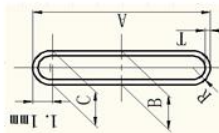
E-mail: hsgchina@188.com Skype:hsgchina188

Product list

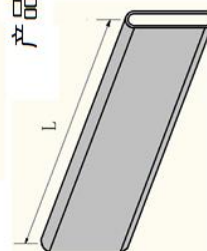
Radiator Tube

www.schoeler-tube.com

NO.	Specification	Major Axis A(±0.05)	Minor Axis B (±0.1)	End C(±0.05)	Thickness	Material
1	R12*1.5	12.00	1.65	1.5	0.26/0.28/0.30	3003 4343/3003/7072 4343/3005/7072
2	R12*1.7	12.00	1.95	1.70	0.26/0.28/0.30	
3	R14*1.6	14.00	1.75	1.60	0.26/0.28/0.30	
4	R14.55*1.5	14.55	1.65	1.50	0.26/0.28/0.30	
5	R14.55*2	14.55	2.20	2.00	0.26/0.28/0.30	
6	R16*1.5	16.00	1.65	1.50	0.26/0.28/0.30	
7	R16*1.6	16.00	1.75	1.60	0.26/0.28/0.30	
8	R16*1.7	16.00	1.85	1.70	0.26/0.28/0.30	
9	R16*1.8	16.00	1.95	1.80	0.26/0.28/0.30	
10	R16*1.9	16.00	2.05	1.90	0.26/0.28/0.30	
11	R16*2.5	16.00	2.7	2.5	0.26/0.28/0.30	
12	R16*2	16.00	2.20	2.00	0.26/0.28/0.30	
13	16.5*1.75	16.50	1.95	1.75	0.26/0.28/0.30	
14	16.48*1.67	16.48	1.85	1.67	0.26/0.28/0.30	
15	R18*1.6	18.00	1.80	1.60	0.26/0.28/0.30	
16	R18*2	18.00	2.20	2.00	0.26/0.28/0.30	
17	R20*2	20.00	2.20	2.00	0.26/0.28/0.30	
18	R21*1.4	21.00	1.6	1.4	0.26/0.28/0.30	
19	R21.58*2.5	21.58	2.7	2.5	0.3/0.32/0.35	
20	R22*1.8	22.00	1.95	1.80	0.3/0.32/0.35	
21	R22*2	22.00	2.20	2.00	0.3/0.32/0.35	
22	R22*2.5	22.00	2.70	2.50	0.3/0.32/0.35	
23	R22.93*1.92	22.93	2.1	1.92	0.3/0.32/0.35	
24	R23.5*2	23.50	2.20	2.00	0.3/0.32/0.35	
25	R25*1.8	25.00	2.00	1.80	0.3/0.32/0.35	
26	R25.5*1.75	25.50	1.95	1.75	0.3/0.32/0.35	
27	R26*1.2	26.00	1.35	1.20	0.3/0.32/0.35	
28	R26*1.4	26.00	1.50	1.40	0.3/0.32/0.35	
29	R26*1.5	26.00	1.65	1.50	0.3/0.32/0.35	
30	R26*1.8	26.00	1.90	1.80	0.3/0.32/0.35	
31	R26*2	26.00	2.25	2.00	0.3/0.32/0.35	
32	R27*1.5	27.00	1.65	1.50	0.3/0.32/0.35	
33	R27*1.8	27.00	1.95	1.80	0.3/0.32/0.35	
34	R28.1*1.77	28.10	1.90	1.77	0.3/0.32/0.35	
35	R32*1.5	32.00	1.70	1.50	0.3/0.32/0.35	



产品图示



36	R32*2	32.00	2.30	2.00	0.3/0.32/0.35
37	R40*2	40.00	2.35	2.00	0.32/0.35/0.40
38	R42*2	42.00	2.35	2.00	0.32/0.35/0.40

CAC Tube

www.schoeler-tube.com

NO.	Specification	Major Axis A(±0.05)	Minor Axis B (±0.15)	End C(±0.05)	Thickness	Material
1	C43*4.3	43.00	4.70	4.30	0.4	4045/3005/4045
2	CY50*8.08(round)	50.00	8.50	8.08	0.45	4343/3003/4343
3	CY64*8.08(round)	64.00	8.50	8.08	0.45	4343/3003/4343
4	C30*7.6	30.00	8.00	7.60	0.26-0.35	4045/3005/4045
5	C32*7.6 (rectangular)	32.00	8.00	7.60	0.26	4045/3005/4045
6	C30*8 (rectangular)	30.00	8.50	8.00	0.26	4045/3005/4045
7	C50*7.6 (rectangular)	50.00	8.00	7.60	0.4-0.45	4045/3003/4045
8	C50*8.08 (rectangular)	50.00	8.50	8.08	0.45	4045/3003/4045
9	C64*7.6 (rectangular)	64.00	8.10	7.60	0.4-0.45	4045/3003/4045
10	C64*7.72 (rectangular)	64.00	8.22	7.72	0.32-0.45	4045/3003/4045
11	C64*8.08 (rectangular)	64.00	8.50	8.08	0.45-0.5	4045/3003/4045
12	C76*8.08 (rectangular)	76.00	8.50	8.08	0.5	4343/3005/4343
13	C80*7.88 (rectangular)	80.00	8.38	7.88	0.4-0.5	4045/3003/4045
14	C36.6*10.1	36.60	10.60	10.10	0.45	4045/3005/4045
15	C50*10.1	50.00	10.60	10.10	0.45	4045/3005/4045
16	C50.62x10.2	50.62	10.70	10.20	0.4	4045/3005/4045
17	C57.1x10.2 (rectangular)	57.10	10.70	10.20	0.4-0.5	4045/3003/4045

18	C62*10.1	62.00	10.60	10.10	0.45	4045/3005/4045
19	C68x10.2 (rectangular)	68.00	10.70	10.20	0.4-0.5	4045/3003/4045

B-Type Tube

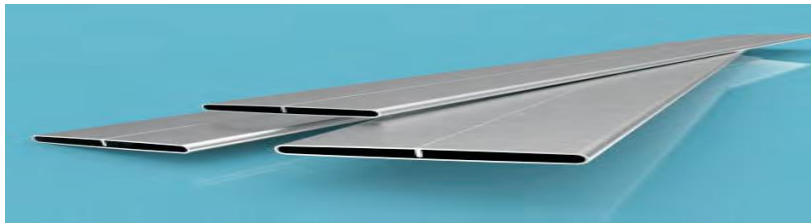
www.schoeler-tube.com

NO.	Specification	Major Axis A(±0.05)	Minor Axis B (±0.1)	End C(±0.05)	Thickness	Material
1	R16*2	16.00	2.00	2.00	0.25	4045/3003/4045
2	R20*2	20.00	2.00	2.00	0.25	
3	R21*1.3	21.00	1.3	2.00	0.25	
4	R22*1.5	22.00	1.50	1.50	0.25	
5	R22*2	22.00	2.00	2.00	0.25	
6	R25.4*1.93	25.4	1.93	1.93	0.32	
7	R26*1.5	26.00	1.50	1.50	0.25	
8	R26*2	26.00	2.00	2.00	0.3	
9	R27*1.24	27.00	1.24	1.24	0.26	
10	R27*1.5	27.00	1.5	1.5	0.28	
11	R27*1.6	27.00	1.6	1.6	0.28	
12	R29*1.4	29.00	1.40	1.40	0.28	4045/3003/7072
13	R32*2	32.00	2.00	2.00	0.3	
14	R34*1.75	34.00	1.75	1.80	0.3	
15	R36*1.8	36.00	1.80	1.80	0.35	
16	R42*1.8	42.00	1.80	1.80	0.32	

B-Type Dimple Tube

1	R25.4*1.93	25.4	1.93	1.93	0.32	4045/3003/7072
2	R27*1.24	27.00	1.24	1.24	0.26	

HF B-Type Tube



NO.	Specification	Major Axis A(±0.05)	Minor Axis B (±0.1)	End C(±0.05)	Thickness	Material
1	HF B22*2	22.00	2.20	2.00	0.26	4343/3005/4343
2	HF B26*1.5	26.00	1.7	1.5	0.26	

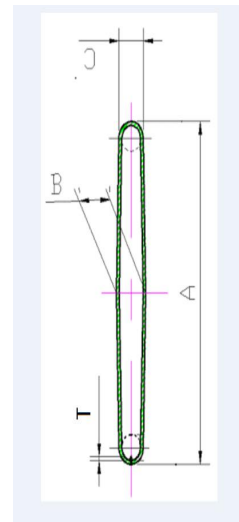
3	HF B26*2	26.00	2.20	2.00	0.26
4	HF B52*1.8	52.00	2.00	1.80	0.35
5	HF B52*2	52.00	2.20	2.00	0.35

Oil Cooler Tube

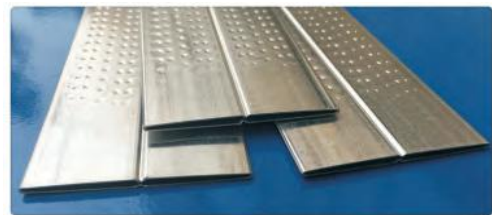
www.schoeler-tube.com

NO.	Specification	Major Axis A(±0.05)	Minor Axis B (±0.15)	End C(±0.05)	Thickness
1	15.75*4.4	15.75		4.4	0.50
2	15.77*3.9	15.77		3.9	0.50
3	O16*4	16	4.30	4.00	0.45
4	18.4*3.9	18.4		3.9	0.40
5	18.77*3.18	18.77		3.18	0.40
6	24.8*4.4	24.8		4.4	0.40/0.50
7	25.4*3.1	25.4		3.1	0.35
8	27.2*3.9	27.2		3.9	0.40
9	O27.66*3.19	27.66	3.5	3.19	0.40-0.45
10	27.68*3.77	27.68	4.1	3.77	0.40-0.45
11	28*4.9	28		4.9	0.40
12	28.99	28.99		3.68	0.32/0.35
13	29*2.8	29		2.8	0.40
14	29*3.8	29		3.8	0.40
15	29.59*2.63	29.59		2.63	0.30
16	29.65*4.25	29.65		4.25	0.50
17	30*3.55	30		3.55	0.40-0.45
18	O30*4	30.00	4.30	4.00	0.45/0.6
19	31.15*3.1	31.15		3.1	0.32
20	O34.7*3.0	34.7	3.3	3	0.45
21	O43*4.3	43	4.6	4.30	0.45
22	O30*3.6	30		3.6	0.40-0.45
23	O32*2.05	32		2.05	0.40-0.45
24	O32*1.8	32		1.8	0.40-0.45
25	O45*4.5	45		4.5	0.45

4343/3003/4343

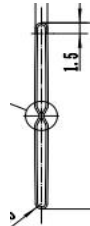
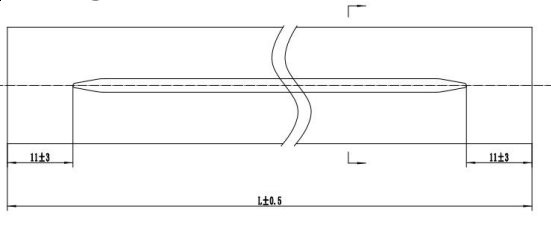


Sandglass Tube



NO.	Specification	Major Axis A(±0.05)	Minor Axis B (±0.1)	End C(±0.05)	Thickness	Material
1	S26*1.5	26.00		1.5	0.3/0.35	4343/3003/4343
2	S26*1.6	26.00		1.6	0.35	4343/3003/4343
3	S26*1.8	26.00		1.8	0.3/0.35/0.4	4343/3003/4343
4	S31.95*1.72	31.95		1.72	0.26-0.35	4343/3003/4343
5	S32*2	32.00		1.6	0.3-0.35	4343/3003/4343
6	S34*1.8	34.00		1.8	0.26-0.35	4343/3003/4343
7	S34*2.05	34.00		2.05	0.26-0.35	4343/3003/4343
8	S36*1.6	36.00		1.6	0.3-0.35	4343/3003/4343
9	Dimple S36*1.6	36.00		1.6	0.3-0.35	4343/3003/4343
11	S40*1.8	40.00		1.8	0.32/0.35/0.4	4343/3003/4343
11	S40*2	40.00		2	0.32/0.35/0.4	4343/3003/4343
10	Dimple S40*2	40.00		2	0.32/0.35/0.4	4343/3003/4343
12	S42*1.7	42.00		1.7	0.35	4343/3003/4343
12	S42*2.05	42.00		2.05	0.35	4343/3003/4343
13	S42*2.05	42.00		2.05	0.35	4343/3003/4343
14	S48*2.05	36.00		1.6	0.35	4343/3003/4343
15	S52*1.8	52.00		1.8	0.4	4343/3003/4343
16	Dimple S52*1.8	52.00		1.8	0.4	4343/3003/4343

Hourglass Tube with Rib



NO.	Specification	Major Axis A(±0.05)	Minor Axis B (±0.1)	End C(±0.05)	Thickness	Material
1	HT26*1.5	26.00		1.5	0.3 (0.26)	4343/3003/4343
5	HT32*2.05	32.00		2.05	0.35	4343/3003/4343
6	HT40*2.05	40.00		2.05	0.40	4343/3003/4343

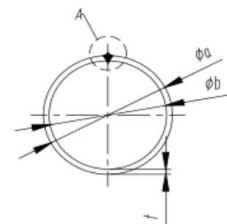
Round tube

www.schoeler-tube.com

NO.	Specification	Major Axis A(±0.05)	Minor Axis B (±0.15)	Thickness	Material
1	Φ15.88x1	15.88±0.2		1	
2	Φ20x1.15	20±0.1		1.15	
3	Φ20x1.2	20±0.1		1.2	

4	Φ20x1.5	20±0.1		17±0.1	1.5
5	Φ20x1.12	20±0.1		17.76±0.1	1..12
6	Φ22x1.3	22±0.1		20.4±0.1	1.3
7	Φ25x1.3	25±0.1		22.4±0.1	1.3
8	Φ28x1.6	28±0.12		24.8±0.12	1.6
9	Φ33.4x1.5	33.4 0-0.2		30.40-0.2	1.5
10	Φ30x1.2	30+0.20		27.6 +0.20	1.2
11	Φ30x1.5	30+0.20		27.+0.20	1.5
12	Φ19x1.3	19±0.05		16.4±0.05	1.3
13	Φ30x1.6	30+0.20		26.8+0.20	1.6
14	Φ31.6x1.5	31.6±0.2		28.60-0.1	1.5
15	Φ32x2	32±0.1		27.4±0.1	2.3
16	Φ38x2	38±0.15		34±0.1	2
17	Φ16x1.0	16±0.05		14±0.05	1
18	Φ16x1.05	16±0.05		13.9±0.05	1.1
19	Φ16x1.1	16±0.05		13.8±0.05	1.2
20	Φ18x1.3	16±0.05		13.4±0.05	1.3
21	Φ19x1.3	19±0.05		16.4±0.05	1.3
22	Φ21x2.0	21±0.05		17±0.05	2
23	Φ29x1.7	29±0.05		26.6±0.05	1.7
24	Φ38x2.5	38±0.05		33±0.05	2.5
25	Φ20x0.6	20±0.08		18.8±0.08	0.6
26	Φ20x1.0	20±0.08		18.8±0.08	1
27	Φ20x1.15	20±0.08		17.7±0.08	1.15
28	Φ20x1.2	20±0.08		17.6±0.08	1.2
29	Φ20x1.3	20±0.08		17.4±0.08	1.3
30	Φ20x1.5	20±0.08		17±0.08	1.5
31	Φ20x2.05	20±0.08		15.9±0.08	2.05
32	Φ20.15x1.15	20.15±0.08		17.85±0.08	1.15

4045/3003
4343/3003



33	Φ22x1.3	22±0.08		19.4±0.08	1.3
34	Φ22x1.5	22±0.08		19.4±0.08	1.3
35	Φ22x1.6	22±0.08		19±0.08	1.5
36	Φ25x0.6	25±0.08		23.8±0.08	0.6
37	Φ25x1.25	25±0.08		22.5±0.08	1.25
38	Φ25x1.3	25±0.08		22.4±0.08	1.3
39	Φ25x1.5	25±0.08		22±0.08	1.5
40	Φ25x1.8	25±0.08		21.4±0.08	1.8
41	Φ25x2.2	25±0.08		20.06±0.08	2.2
42	Φ25.05x1.5	25.05±0.08		22.05±0.08	1.5
43	Φ30x1.5	30±0.08		27±0.08	1.5
44	Φ30.2x1.5	30.2±0.08		27.2±0.08	1.5
45	Φ32x1.5	32±0.08		29±0.08	1.5
46	Φ32x1.8	32±0.08		28.6±0.08	1.8
47	Φ32x2.5	32±0.08		27±0.08	2.5
48	Φ40x1.3	40±0.08		33±0.05	1.8
49	Φ40x1.5	40±0.08		37±0.08	1.5
50	Φ40x1.8	40±0.08		36.4±0.08	1.8
51	Φ40x2.3	40±0.08		37±0.08	2.3
52	Φ43.5x1.3	43.5±0.08		40.9±0.08	1.3
53	Φ50x1.3	50±0.08		47.4±0.08	1.3
54	Φ50x2.2	50±0.08		45.6±0.08	2.2
55	Φ50x2.6	50±0.08		44.8±0.08	2.6

D-Type tube

www.schoeler-tube.com

NO.	Specification	Major Axis A(±0.05)		Minor Axis B (±0.15)	Thickness	Material
1	D20x20x1.0	20±0.1		20±0.1	1	
2	D18x19	18±0.05		19±0.05	1	
3	D19x19	19±0.05		19±0.05	1	
4	D20.4x18	20.4±0.05		18±0.05	1	
5	D18x22	18±0.05		22±0.05	1	

6	D15.5x14	15.5±0.05		14±0.05	1
7	D21x17	21±0.05		17±0.05	1
8	D21x19.5	21±0.05		19.5±0.05	1
9	D15x17	15±0.05		17±0.05	1
10	D26x22.4	26±0.05		22.4±0.05	1
11	D32x18	32±0.05		18±0.05	1
12	D32x23	32±0.05		23±0.05	1
13	D38x27	38±0.05		27±0.05	1
14	D20x17	20±0.05		17±0.05	1

