

APPLICATION SCENES

应用场景



Personalized Labels
个性化标签

Advertised Posters
广告海报

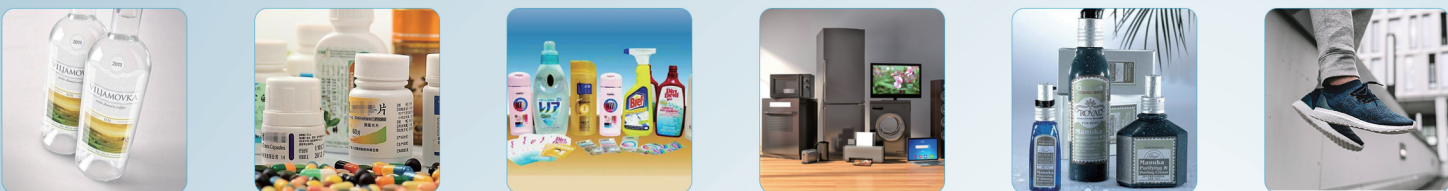
Variable Data
Payment Code
可变数据支付代码

Retroactive And Anti-fake
Code Applications
追溯和防伪代码应用

- And more Personalized, variable and short-run requirement fields
以及更多个性化、可变和短期需求领域

APPLICABLE INDUSTRY

适用行业



Food & Beverage
Industry
餐饮业

Medicine Industry
医药工业

Daily Chemistry
Industry
日用化学工业

Electronic & Electrics
Industry
电子电气工业

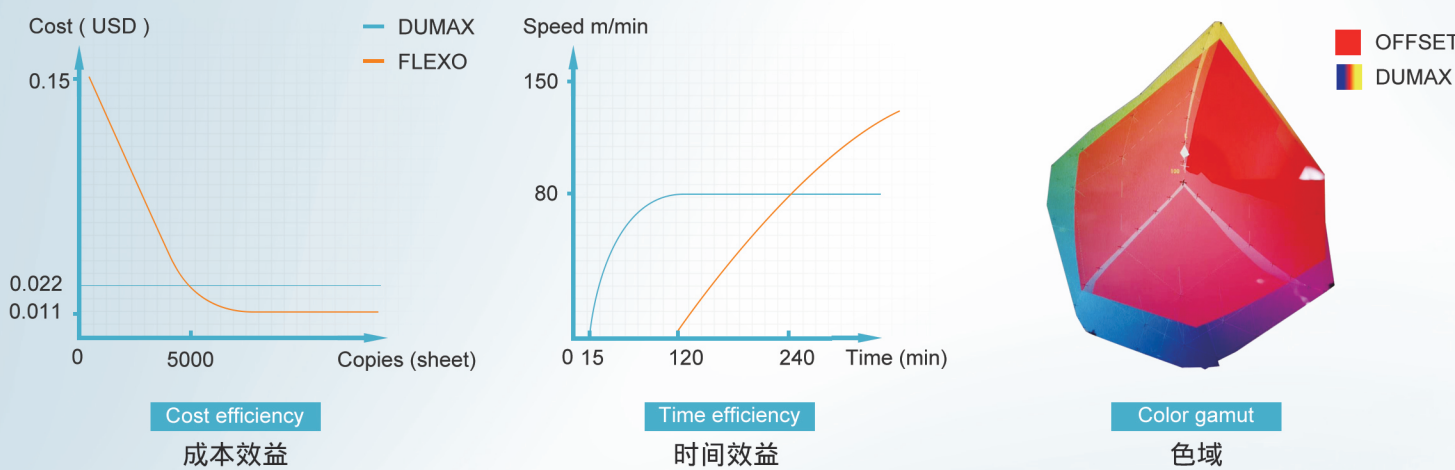
Cosmetic Industry
化妆品工业

Shoes & Garment
Industry
制鞋服装业

- More industries, more applications
更多的行业, 更多的应用

ANALYSIS & COMPARISON

分析比较



TECHNICAL INTRODUCTION

技术介绍

- DUMAX-330 roll-to-roll high-speed digital label printer is a full-color intelligent inkjet system for the global print market, which is developed by Shanghai UPG and Shanghai Dragon powered by Memjet DuraLink technology.
- By combining latest aqueous printing technology and user friendly mechanical control system enables easy operations and adjustment by the operator. Automatic inkjet cleaning and maintenance module eliminates cumbersome manual operations, and effectively extends the life of the printhead. Environmentally friendly aqueous pigment ink offers great light and water resistance and can be supplied in independent large-capacity ink drum with different size according to customers requirements.
- The combination of greater than 100m/min printing speed, ultra-high resolution and excellent color reproduction creates a new generation of digital printer with high quality and high production efficiency.
- DUMAX-330 卷对卷高速全彩数码印刷机是联强集团上海众鹤国际贸易有限公司和上海德拉根印刷机械有限公司引进美国Memjet二代DuraLink喷墨技术, 研发生产的一套适用于全球印刷市场的全彩智能数码喷墨系统。
- 采用最新的水性喷印技术和友好的机械控制系统极大地方便操作调整。全自动智能喷墨清洗维护系统, 无须繁琐的人工操作, 并有效延长喷头使用寿命。使用的环保水性颜料墨水, 成品耐光耐水, 并可根据客户需求配置不同尺寸的大容量墨桶配合批量化生产。
- 100米每分钟以上的印刷速度、配合超高的分辨率和出色的色彩还原组合出兼具高品质和高生产效能的新一代数码印刷机。

SPECIFICATION

技术参数

Model 型号	DUMAX-330
Max.resolution 最高分辨率	1600*1585 DPI
Print speed 最快打印速度	100m/min
Printing color 打印颜色	CMYK
Max. print width 最大幅幅	222.8mm
Max.paper width 最宽走纸	300mm
Min.paper width 最窄走纸	30mm
Max.web diameter 最大卷径	600mm
Media weight 适用纸张	60-250(g/m2)
Ink type 墨水类型	Environmentally friendly aqueous pigment ink 水性环保颜料墨水
Dimensions (Length×Width×Height) 尺寸	3216×1759×1805mm
Total power 功率	45kW
Weight 重量	3000Kg

CONTACT US/联系方式

Room 2403, Jincheng Mansion 511 Tianmuxi Road, Shanghai, P.R.China
sales@shanghai-upg.com
021-6317 3900
021-6353 8343

No.1220 Zhufeng Road Zhujiajiao Industrial Zone Qingpu Shanghai
sales1@shanghaidlg.com
021-5983 3989 / 5983 2368
021-5983 2367



联强集团
UP GROUP

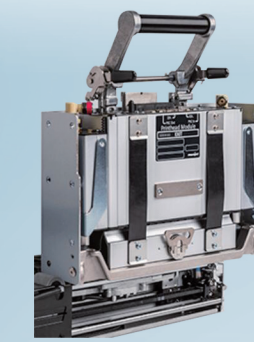
Powered by
memjet

DLG 德拉根

DUMAX-330

卷对卷高速全彩数码印刷机

Roll-to-roll High-speed Digital Printing Machine



- The core printing engine uses Memjet DuraLink high-speed thermal inkjet technology. It is available to Print up to 1600 dpi with 70,400 nozzles high-precision inkjet, supports high quality images on printing width of 222 mm.

- 核心打印引擎使用Memjet DuraLink高速热发泡喷墨技术。拥有70,400个喷嘴的高精度喷墨使最高打印分辨率达到1600 dpi, 从而支持宽度222 mm的高质量图像打印。



- DUMAX software system provides a convenient workflow with quickly importing images for printing. The B/S architecture system can perform offline single operation or multi-point online operation, and flexibly adapt to different business modes of customers.

- DUMAX软件系统提供简洁便利的工作流程, 可快速导入图像进行打印。B/S架构系统可以执行离线单操作或多点在线操作, 并灵活适应客户多样的业务模式。



- New generation eco-friendly aqueous pigment ink with great water-fastness, light-fastness, rub resistance and provides a wide range of gamuts, which is optimized for high speed production, adapt to higher capacity and lower cost.

- 采用新一代环保水性颜料墨水, 拥有杰出的防水、耐光、耐摩擦性能和广色域, 突出优化高速生产, 适应更高的产能和更低的成本。



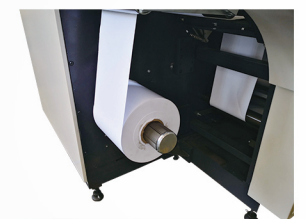
- Production speed up to 100 m/min to meet more business needs. The 5x redundancy nozzle design effectively reduces nozzle plugging and greatly extend the life of replaceable printhead.

- 生产速度可达100米/分钟, 以满足更多的业务需求。5倍冗余度的喷嘴设计有效地减少了喷嘴堵塞, 并大大延长了可更换喷头的使用寿命。



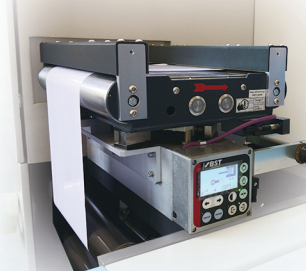
- Multi-purpose intelligent drying system can adapt to more variable types of printing media.

- 配置多功能智能烘干系统, 适应更多种类的打印材料。



- Full servo driven paper path, even under high speed production still maintains great stability.

- 走纸由全伺服驱动, 即使在高速生产下仍能保持很高的稳定性。配置多功能智能烘干系统, 适应更多种类的打印材料。



- Fully automatic correction system and paper path constant tension control provide easy operation and adjustment.

- 配置全自动纠偏系统和走纸恒张力控制, 操作简易, 调整方便。

Pre-press processing / 印前处理

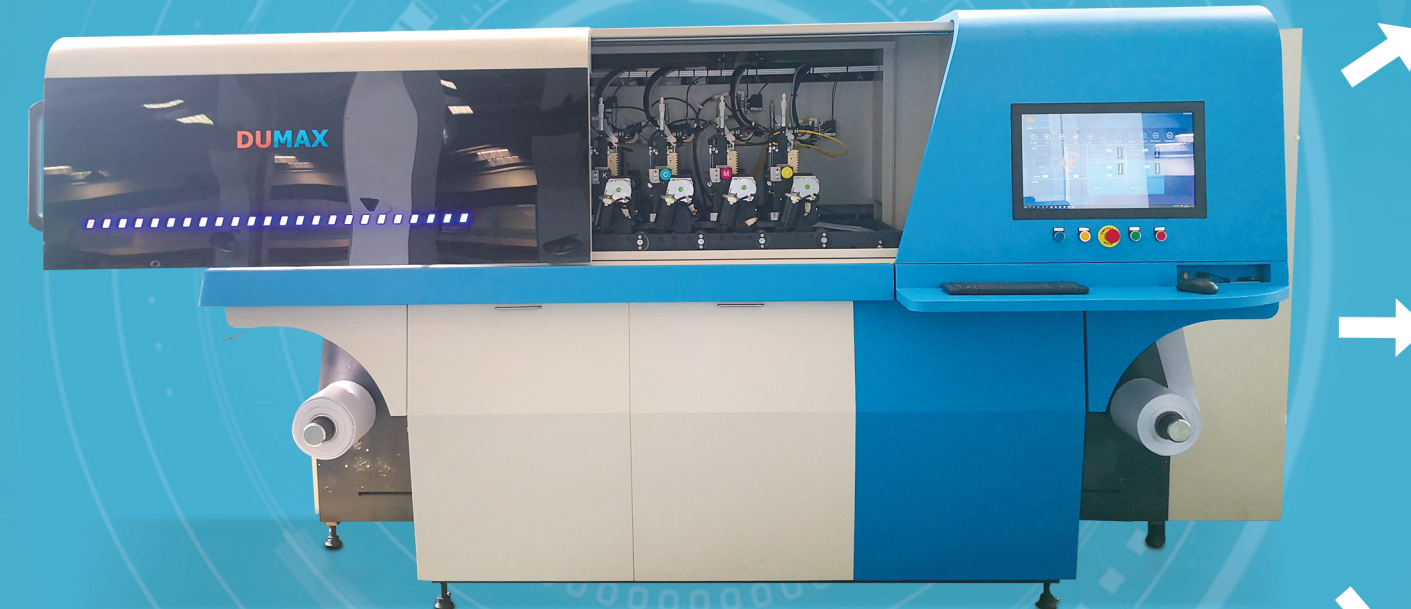
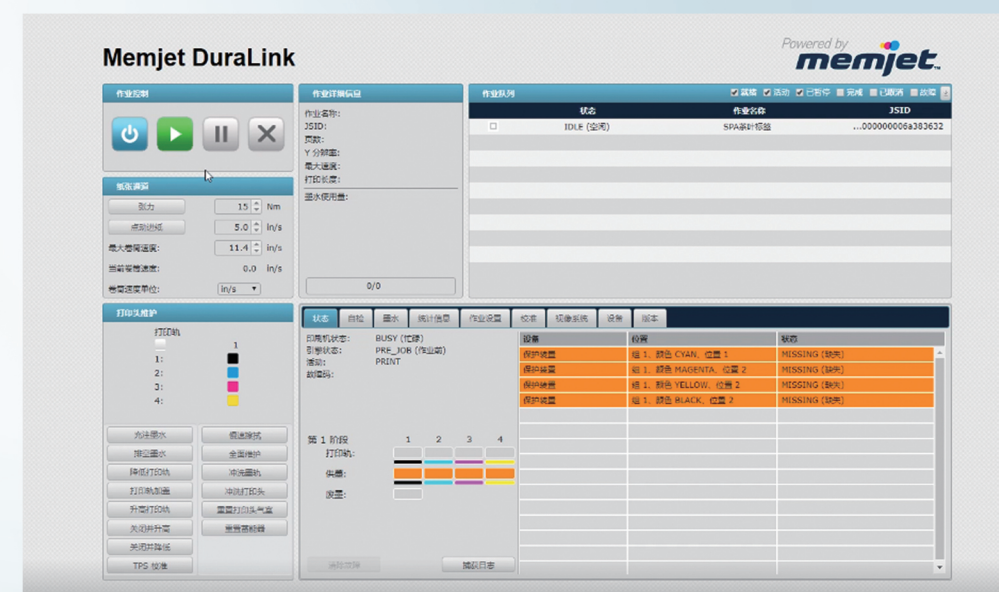
Coating media / 纸张处理

主要技术参数 Main Technical Parameter:

运行速度	Working speed	10-80m/min
最大宽度	Max. width	330mm
最小宽度	Min. width	30mm
最大卷径	Max web diameter	600mm
卷芯直径	Roll core diameter	76mm
纸重范围	Paper weight	60-250g/m ²
电源	Power supply	380V/50HZ
总功率	Total power	34kw
总重量	Total weight	2500kg
外型尺寸	Overall dimension	3275×1837×1500mm



Image processing / 图像处理



Eco-friendly water-based pigment ink
水性环保染料墨



1600DPI High precision native resolution
最高1600DPI分辨率



Production speed up to 100m/min
最高100m/min生产速度



Fully automatic intelligent printhead wiping and maintenance system
全自动维护装置



No needs for making plates, plug and print
无需制版、装版

创新智能 Innovative & Intelligent
经济耐用 Affordable & Durable
环保高效 Eco-friendly & Efficient

Post-press processing / 印后处理

Laser cutter / 激光模切

Fastest
最快



主要技术参数 Main Technical Parameter:

产品型号	Model	UPG-330RE
最大幅宽	Max. sheet width	330mm
适应材料	Materials	不干胶材料 Self-adhesive media
激光特性	Laser source	10.6um CO2
激光能量	Laser energy	180w
定位方式	Position method	Color code sensor+Auto deviation correction 色标传感+纠偏
最大扫描范围	Max. scan range	320mm
文件格式	Input file	PLT, JPG, BMP, DXF
外形尺寸	Dimension	2750x2250x1780mm
整机重量	Weight	1200kgs

Blade cutter / 刀模切

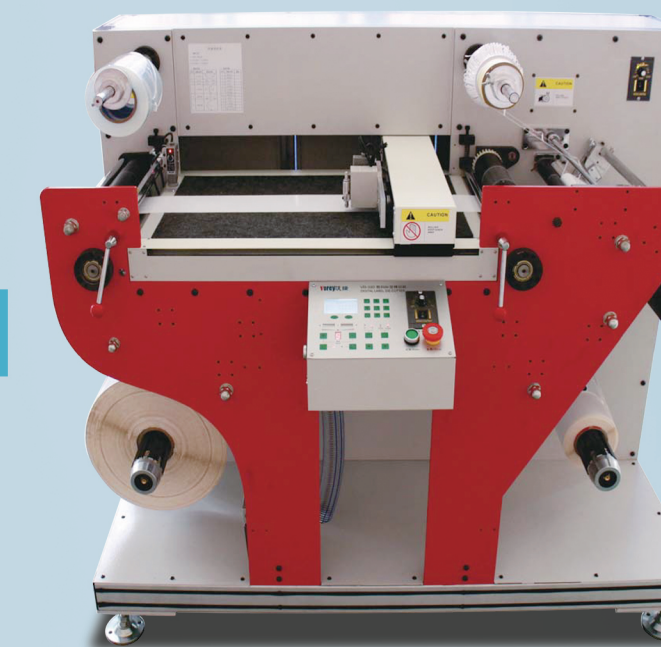
Medium
一般需求

主要技术参数 Main Technical Parameter:

产品型号	Model	UPG-350
最大幅宽	Max. width	350mm
文件格式	Input file	AI
最大单组切割长度	Max. length of single set	980mm
切割头	Blade	2x2set
最快速度	Max. speed	145m/min
最小/最大间距	Min/Max gap of dual blade in single set	76mm/165mm
最大卷径	Max roll diameter	650mm
外形尺寸	Dimension	4500x1850x1950mm
整机重量	Weight	2000kgs



Customize
小批量



主要技术参数 Main Technical Parameter:

产品型号	Model	UPG-320
最大卷径	Max. roll diameter	40-320mm
最大切割幅面	Max. cut width	300mm
切割长度	Cut length	10-400mm
最快速度	Max. speed	5m/min
切割头	Blade	2-4
分切头	Slitting blade	4-15
分切速度	Max. slitting speed	60m/min
分切宽度	Slitting width	10-310mm
外形尺寸	Dimension	1580x900x1360mm
整机重量	Weight	520kgs

Life application / 生活应用

